

The most compact lifter in the world!!

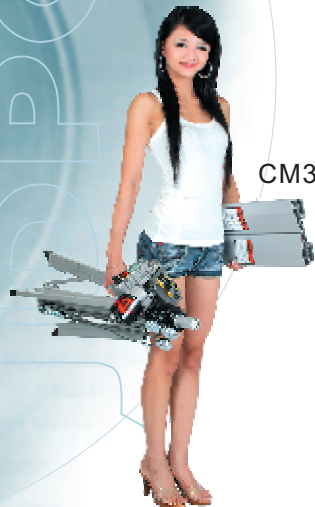


CM340 - Standard Unit



CM520 - Standard Unit

Mounted on heavy duty castors for easy maneuverability.



CM340 - Stowed



CM520 - Stowed

©Single person setup and transportation.

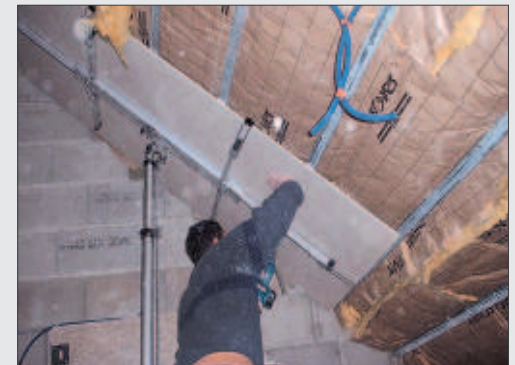
KSF Model	Basic Height	Lifting Height	Load Capacity	Weight		Dimensions	
				Lifter	Platform	Stowed	Operating
CM-340	970 mm	3.3 m	130kg-3.0m 120kg-3.3m	21kg	5.3kg	300x300mm	1x1.1m
CM-520	1190 mm	4.9 m	140kg-3.0m 130kg-4.0m 90kg-4.9m	38kg	5.3kg	380x380mm	1.5x1.4m

(Specifications subject to change without notice)

CM340 with standard platform.



CM340 With Optional Glass Cradle.



CM340 With Optional Plasterboard Cradle.



Hand-Held Controller
 Variable speed with belt clip.

Emergency Stop Button
 Switches to manual operation.

Manual Operation
 For locations with no mains power.

Level embedded in mast
 Ensure mast is vertical before operation.



Retractable leg (All CM Models)
 Position next to a wall



Individual Telescoping Legs (All CM Models)
 Ideal for uneven surfaces!



CM340 With Optional Wheel Kit



CM340 With Optional Wheel Kit



CM520 With Standard Platform



CM340 With Standard Platform



CM340 With Standard Platform

OPTIONAL ACCESSORIES:

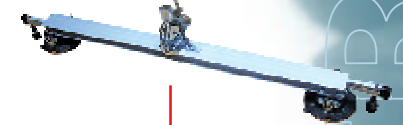
1. Plasterboard cradle - highly manoeuvrable.



2. Extension arms - for awning and garage door installations.



3. Vacuum Cradle - For glass, solar panels etc.



4. CM340 - Optional Castor accessory kit.
 NOTE: CM520 comes with Castors



CM Lifter Features/Benefits

1. **Telescoping Legs** - For uneven surfaces, stairways, slopes etc.
2. **Level in Mast** - Ensure mast is vertical before operation.
3. **Telescoping Mast** - Compact, Strong and Light - made with robust, specially heat-treated aluminium.
4. **Electric Motor** - Variable speed controller with long cable and belt clip.
5. **Manual Controls** - If no mains power available, use electric drill or handle to wind lifter.
6. **Emergency Stop Button** - Also used to switch to manual control.
7. **Setup in 30 seconds** - No tools required.
8. **Overload Cut-Out** - Fitted with overload clutch for safety.
9. **Wheels for Mobility** - Included with CM520 - optional accessory with CM340.
10. **Retractable Leg** - Lift loads adjacent to wall.
11. **Fine Positioning** - Align load precisely with variable speed controller