

PIT MASTER HYDRAULIC LED LIGHTING TOWER HB4



SCIG

Hydraulic LED Lighting Tower

Powered by Kubota Engine with reliable power output, high illumination and a compact design. Pit Master lighting towers are fitted with forklift pockets and lift points for transportation and are suitable for all weather conditions. Suited for use in Mining, Construction, Events and Military



- 4 x 300W Heavy Duty LED Lights
- 48 V DC Extra Low Voltage
- Quiet 55db Noise Level
- Simple User Friendly Operation
- From 0.7 L/h Fuel Consumption Efficiency
- Light Life 30,000 hours
- Immediate Light Start Up
- Low Carbon Emissions
- Mine Site Ready
- 200 Hours Operational Per Tank
- 140L Fuel Tank Capacity

World's Leading Manufacturer of Customer Solutions

The world's leading manufacturer of the most powerful Extra Low Voltage LED Lighting Towers available and the only manufacturer that provides a full range of LED Lighting Towers for all applications within the Mining, Industrial and Construction sectors.

TRUSTED BY MAJOR MINE SITES AND ALL CONSTRUCTION COMPANIES



International Services



Innovative Low Cost Solutions



High Quality, Reliable Products



Continuous Improvement

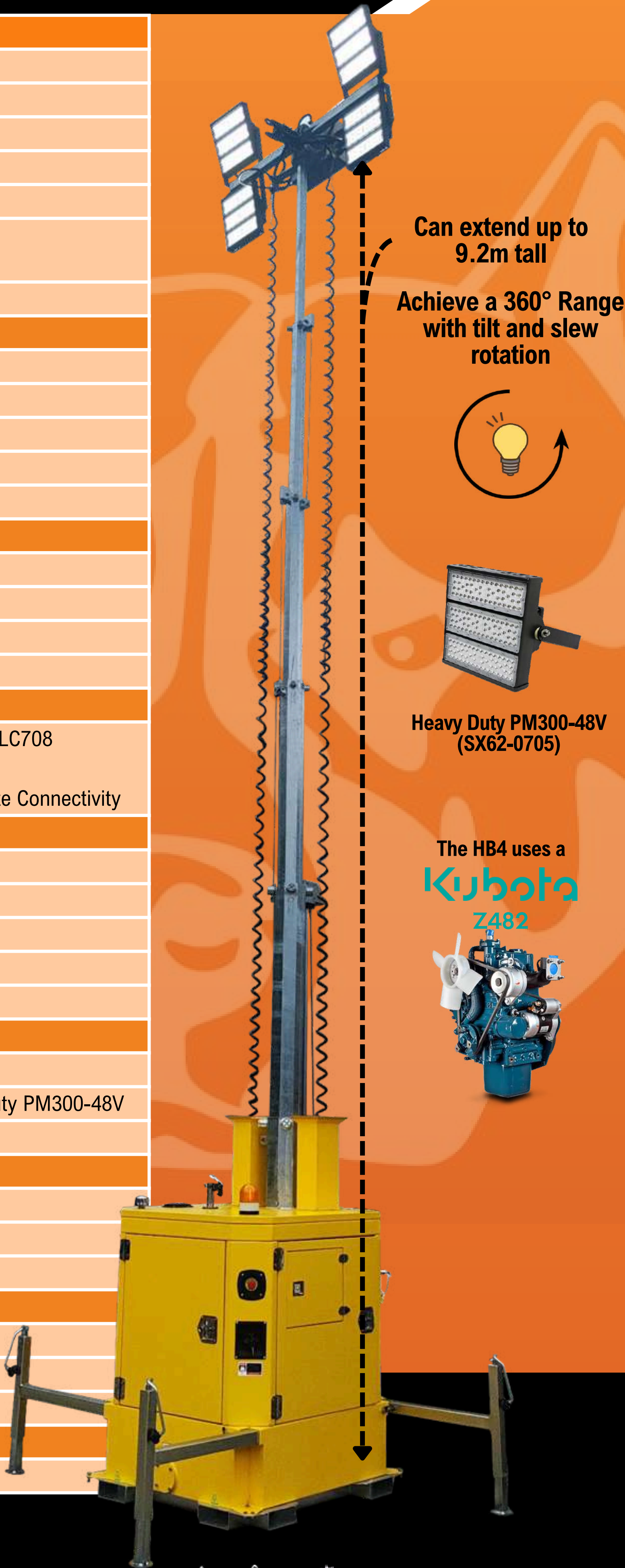
Phone 1300 14 SCIG

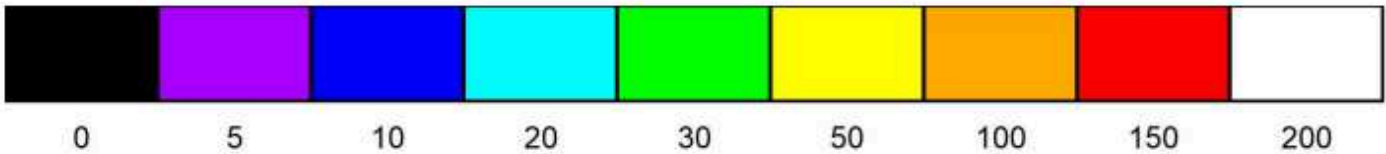
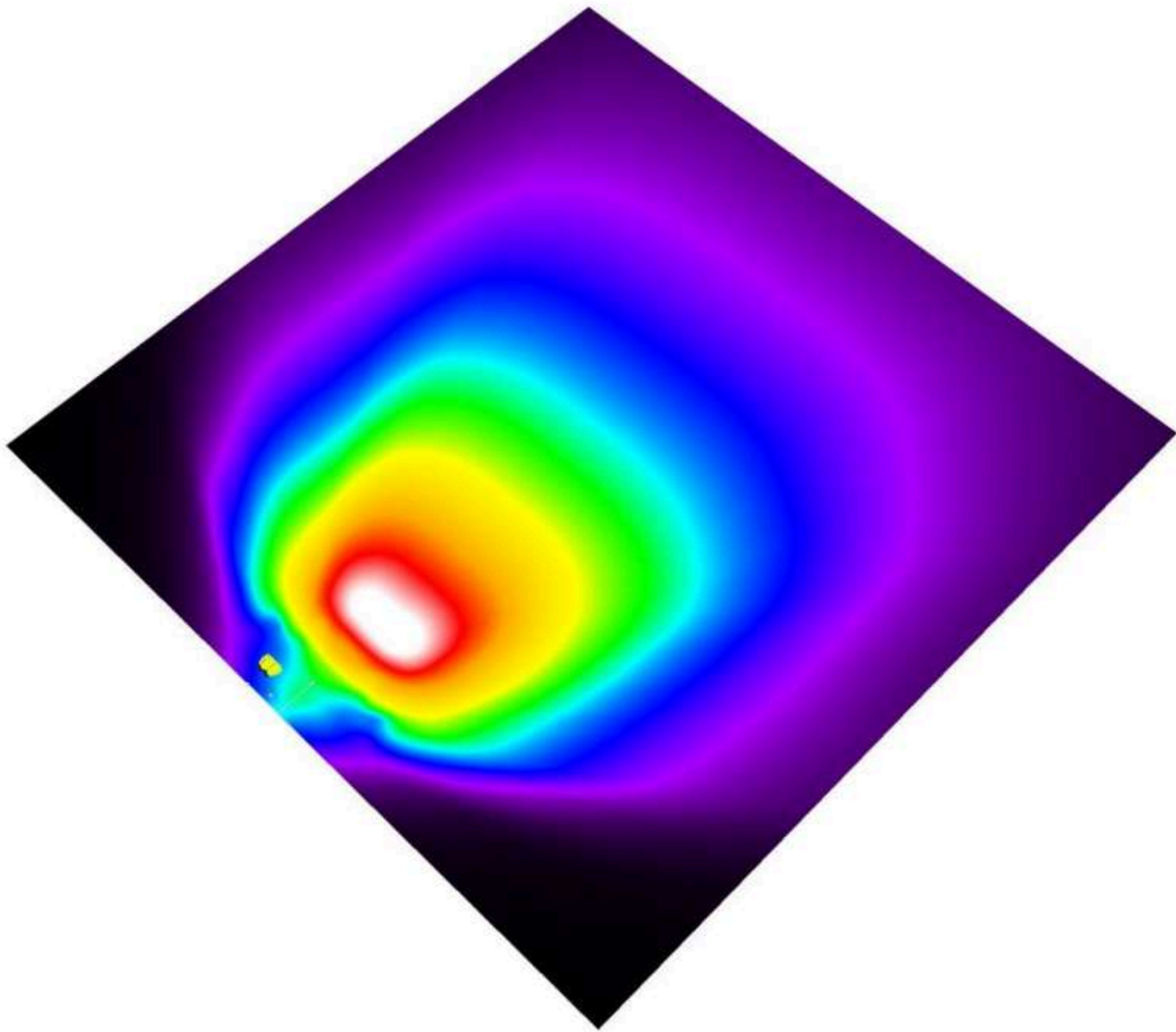
FIND OUR FULL RANGE OF LIGHTING TOWERS AT

WWW.PITMASTER.COM.AU

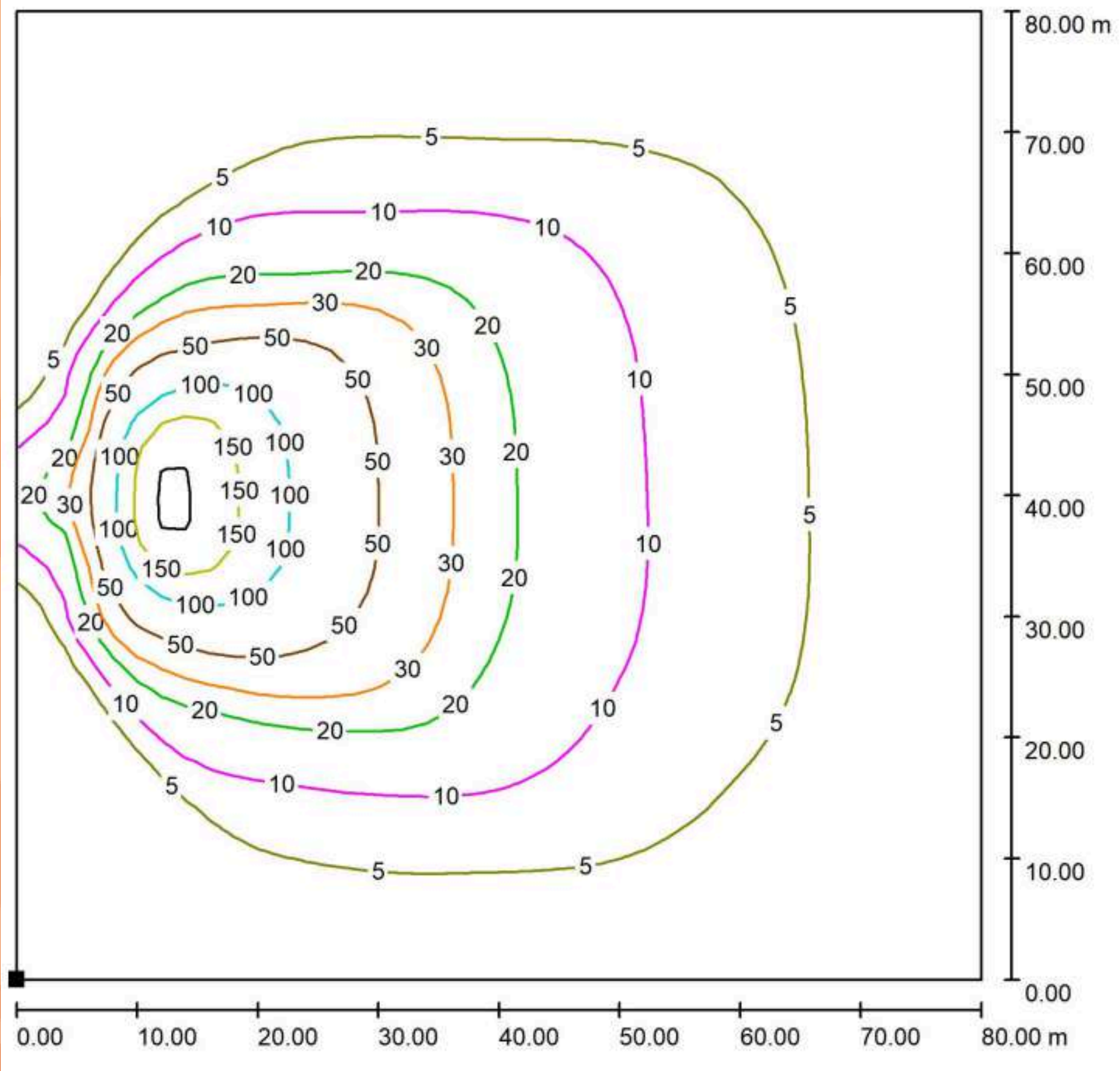
HB4 Specifications

Performance Data	
Model	HB4
Rated Voltage	48V DC
Rated Power	5kW
Min. Working Temperature	-10°C
Max. Working Temperature	50°C
Sound Pressure Level (dBA/7m)	55dBA
Fuel Tank Capacity	140L
Engine	
Model	Kubota Z482
Speed	3000 rpm
Rated Net Output (PRP)	8.2 kW
Cylinder and Bore Stroke	67x68mm
Number of Cylinders	2
Alternator	
Model	Meccalte PM5G
Rated Output (kW)	5.0
Protection	IP23
Insulation Class	H
Controller	
Brand	Smart Gen ALC708 OR Optional - Full Remote Connectivity
Mast	
Type	Hydraulic
Rotation (Electric)	180°
Tilt (Electric)	180°
Max Height	9.2m
Wind Proof	80 km/h
Lights	
Lamps	LED
Wattage	4 x Pit Master Heavy Duty PM300-48V
Total Lumens	204,000 Lumens
Minimum Dimensions (Retracted)	
Height	2450 mm
Length	1250 mm
Width	1150 mm
Maximum Dimensions (Extended)	
Height	9200 mm
Length	2600 mm
Width	2500 mm
Weight	
880kg	





Light Plot Specifications	
Components	4 x PM300-48V
Height	9m
Angle	75°
Average Luminous Flux	16
Max. Luminous Flux	216



Values in Lux (lx) , Scale 1:626