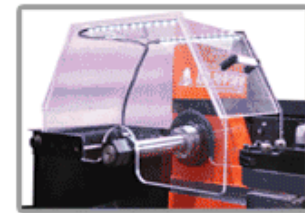


# DBL-STAR(B)



● Tool box



● LED Safety cover



● Limit Switch & V bed

**Available for All type of Disk&Drum!**



Disk



Tuning disk



Hub type disk

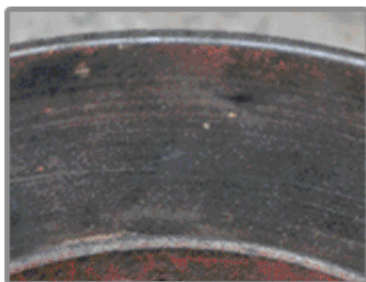


Truck drum



Hub type drum

## ● Comparison picture of disk

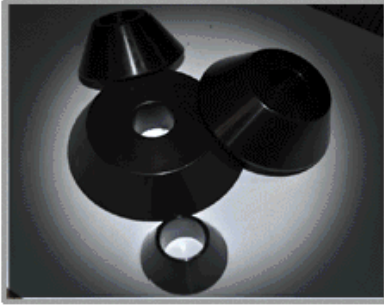


Before



After

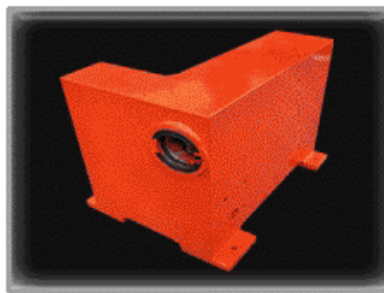
## ● Feature of STAR(B)



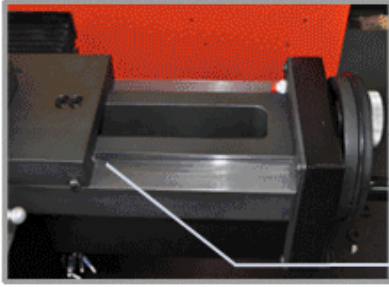
– Centering cone and every part that may cause any friction, are applied heat treatment so that sustain high quality for long time.



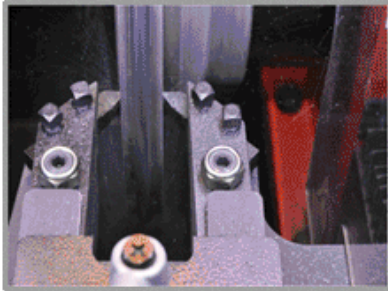
– Heat treatment and high quality polishing of main shaft (Arbor) have tolerance from



– Whole cast body frame provides reliable, precision working environment.



- Installed adjustment shim allows permanent precise grinding work



- Accumulated technical skill on Lathe allows Fast, Precise work.



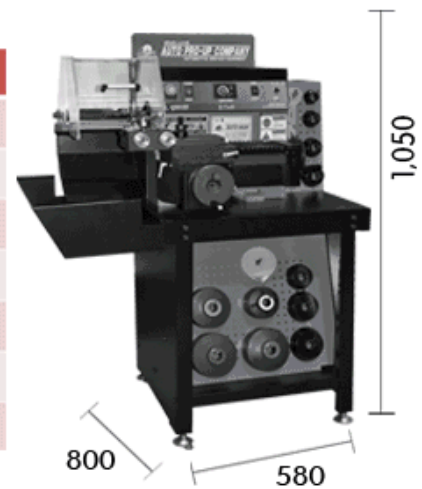
- Bite tip is manufactured by Mitsubishi and Kyocera



- High precision machine

## ● Specification

DBL-STAR(B)	
Motor	1HP, 110/220V, 50/60Hz
Motor RPM	110RPM
Disk(rotor) size	Maximum diameter : 420mm
	Maximum thickness : 50mm
Drum size	Maximum diameter : 590mm
	Maximum depth : 140mm
Net weight	250Kg





**Standard Accessories**



**00501** (35~52mm)  
Center Cone



**00502** (43~63mm)  
Center Cone



**00503** (53~73mm)  
Center Cone



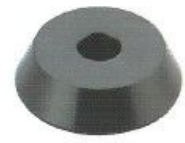
**00504** (63~84mm)  
Center Cone



**00505** (71~91mm)  
Center Cone



**00506** (88~108mm)  
Center Cone



**00507** (93~118mm)  
Center Cone



**00508**  
Spacer 10mm



**00509**  
Spacer 20mm



**00510**  
Spacer 30mm



**00511**  
Spacer 50mm



**00515**  
Spring



**00516~00518**  
Rubber Ring 250, 280, 300mm



**00519**  
Spanner



**00551**  
Hole Cup 100mm



**00552**  
Hole Cup 120mm



**00553**  
Hole Cup 145mm 2EA



**00583**  
Brush



**00584**  
Drum Band



**10545**  
Power Cable



**08002**  
Lathe Kit



**08004**  
Drum Holder



**08007**  
Safety Cover



**08010**  
Protect Glasses



**08020**  
Silencer Large



**01578**  
Accessories Hook

**Optional Accessories**

**#00541** Small Drum Arbor Kit for European car's small rear drum



**00541** **00544** **00542** **00543**

**#08102** Flywheel Adaptor Arbor



**08102** **08101**

**#00559** Double Taper Centering Cones



**00559** (41mm) **00560** (43mm) **00561** (52mm) **00562** (62mm) **00563** (71mm)

**Multi Flange**



**00564**  
for some Korean cars  
(Hyundai, KIA, etc.)



**00565**  
for some Japanese cars  
(Toyota, etc.)

**Middle Truck Kit**



**00555**  
Center Cone 150mm



**00554**  
Hole Cup 175mm

**#00601** Hubless adaptor set



**00601** Rotor Locator **00602** Centering Cone **00603** Spacer **00604** Wrench **00605** Locking Nut

**Special adaptors for composite rotors set**



**#00592** **#00591**

**Composite rotor adaptor kit**  
Rotor adaptor for Ford, Taurus, Mercury Sable, GM "W" body cars & Lincoln Adaptor for Eagle premiere, Laredo & Cherokee.  
Must be used with an #00601



**optional chuck adaptor set**