

200 ton CAPACITY ZCC2000-1



ZOOMLION

Zoomlion Heavy Industry Science & Technology Co.,Ltd.

Add: No.677, Lugu Road, Zoomlion Industrial Park, Changsha, Hunan, China, 410205

Copyright©2021 Zoomlion. All rights reserved. Reproduction and copying of any part of contents is not allowed for any purposes without Zoomlion's approval.



Product specifications are subject to change without notice and obligation. The photographs and/or drawing in this document are for illustrative purposes only. Please consult your local ZOOMLION dealer for more information.
website:en.zoomlion.com 2021.10.13

ZOOMLION

VISION CREATES FUTURE

ZOOMLION

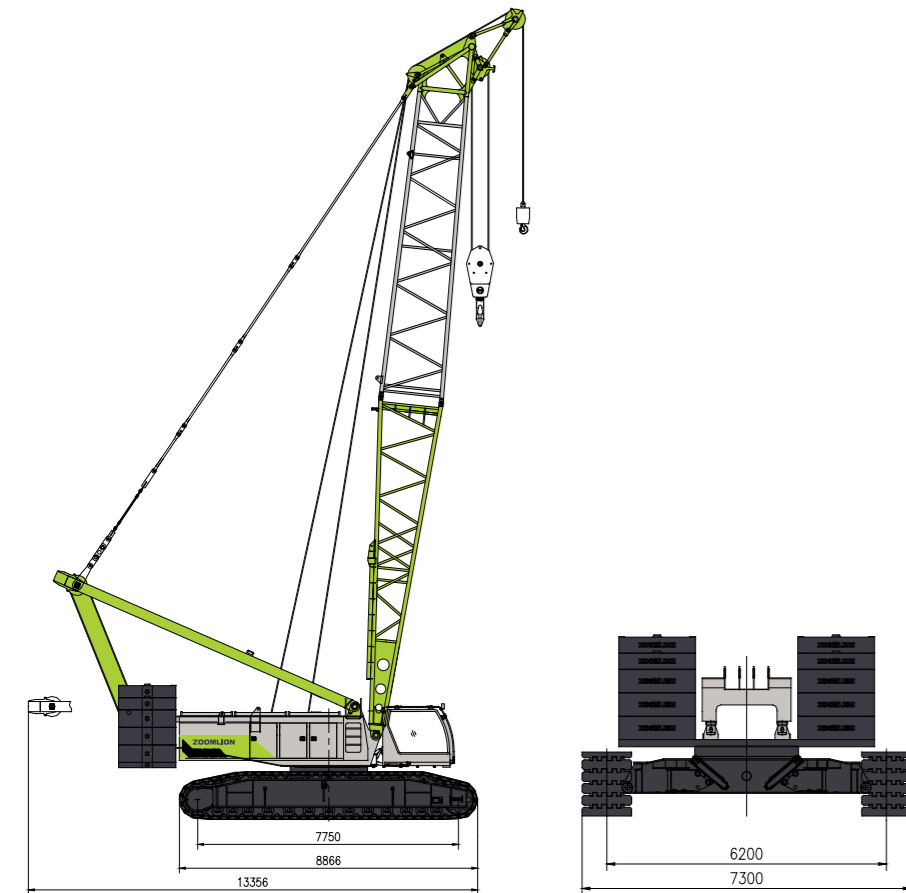
CONTENTS 目录

ZCC2000-1	DEMENSIONS	01
ZCC2000-1	TECHNICAL FEATURE	01
ZCC2000-1	BOOM COMBINATION	02
ZCC2000-1	TRANSPORTATION AND WEIGHTS	03/07
ZCC2000-1	TECHNICAL DESCRIPTION	08/09
ZCC2000-1	LIFTING PERFORMANCE	09/18
ZCC2000-1	MAJOR TECHNICAL PARAMETERS	19



DEMENSIONS

Unit: mm



TECHNICAL FEATURE

High cost-effective

- Typical working conditions of subway construction: main boom 50m, lifting capacity 75.6t@12m.
- The maximum single rope speed of hoisting winch is 132m/min, leading the industry.
- Ultra high working efficiency, the maximum single rope speed of hoisting winch is 132m/min, leading the industry.

More comfortable driving experience

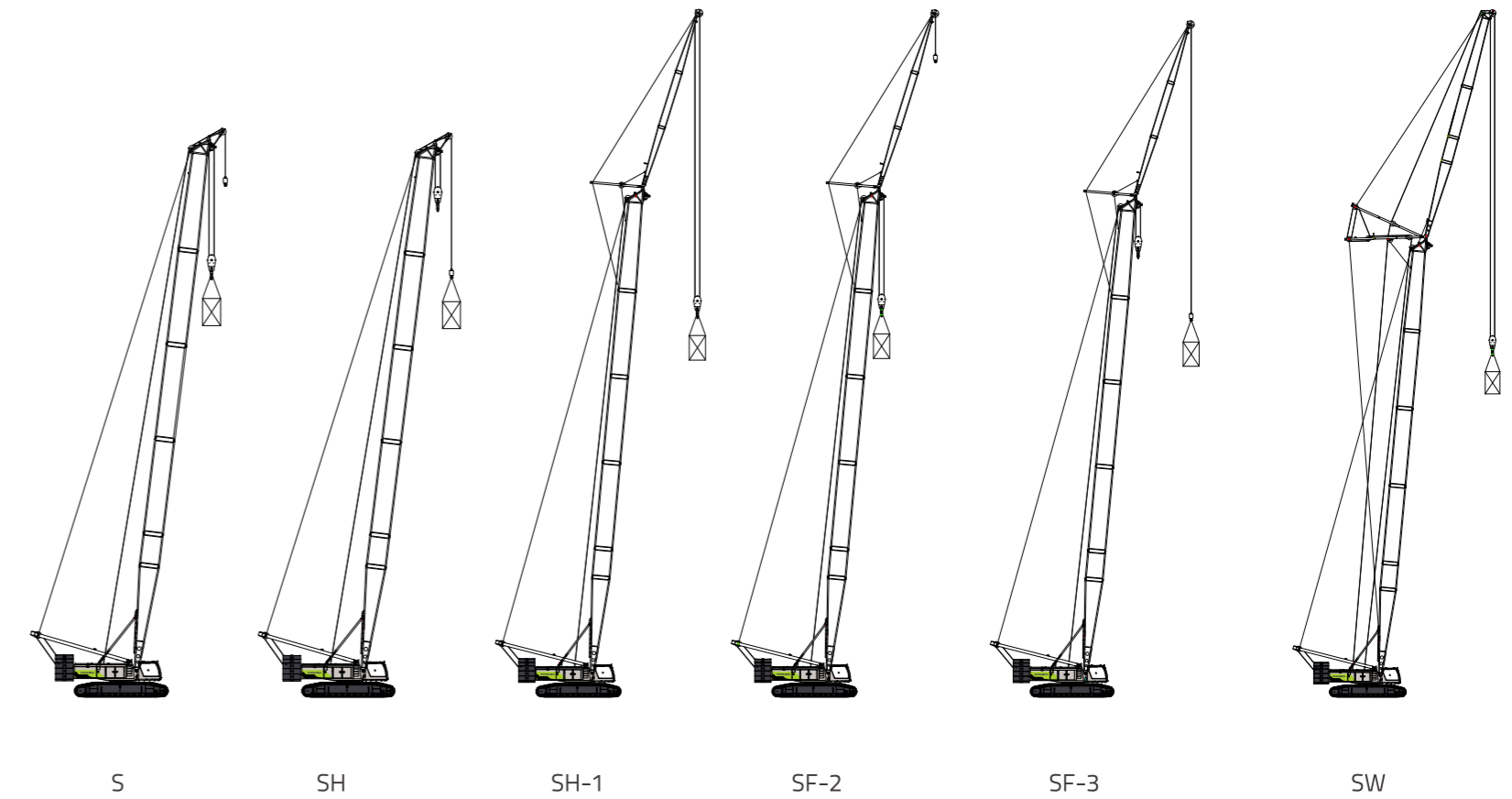
- 1.25m wide panoramic control room, 10.4-inch color display LCD, standard boom HD camera.
- Adjustable shock-absorbing seat and right integrated control panel.

Maintenance, disassembly and transportation are more convenient

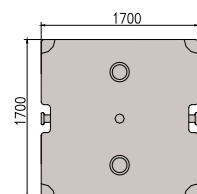
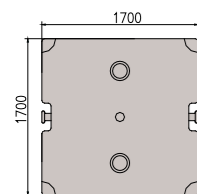
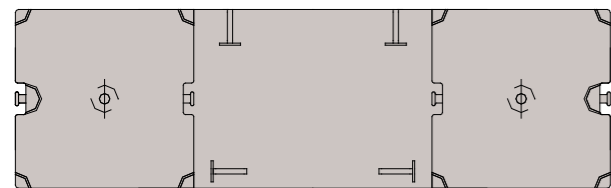
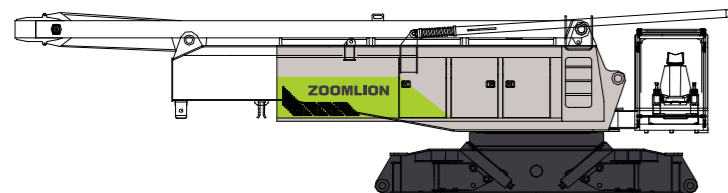
- Load feedback proportional hydraulic control system, more efficient maintenance.
- The maximum transportation weight of a single piece is 39t and the maximum transportation width is 3m.

BOOM COMBINATION

Code	Operating mode	Boom combination
S	Main boom	20m ~ 83m
SH	Goose head frame	20m ~ 83m
SF-1	Main boom + fixed jib(auxiliary hook, without main hook)	(47m ~ 71m) + (13m ~ 31m)
SF-2	Main boom + fixed jib (main hook)	(47m ~ 71m) + (13m ~ 31m)
SF-3	Main boom + fixed jib(auxiliary hook, with main hook)	(47m ~ 71m) + (13m ~ 31m)
SW	Main boom + luffing jib	(23m ~ 56m) + (21m ~ 51m)



TRANSPORTATION AND WEIGHTS



Basic machine	1 piece
Length(L)	12475mm
Width (W)	3000 mm
Height (H)	3190 mm
Weight	39000 kg

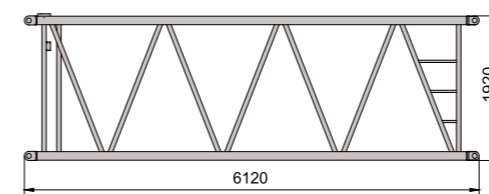
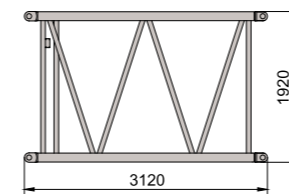
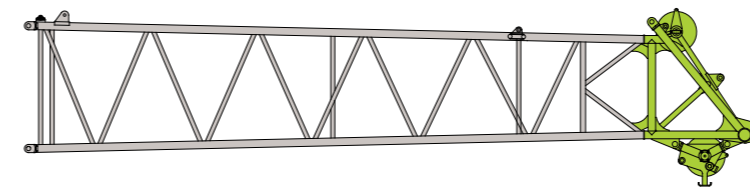
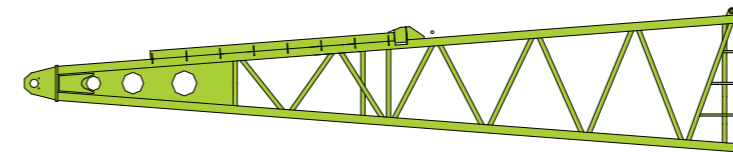
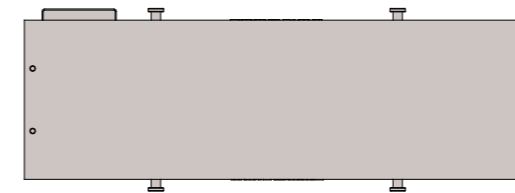
Crawler carrier assy	2 pieces
Length(L)	8866 mm
Width (W)	1645 mm
Height (H)	1420 mm
Weight	20510 kg

Counterweight base	1 piece
Length(L)	5670 mm
Width (W)	1700 mm
Height (H)	490 mm
Weight	12150 kg

Counterweight plate	6 pieces*
Length(L)	1700 mm
Width (W)	1700 mm
Height (H)	510 mm
Weight	7100 kg

Counterweight plate	4 pieces*
Length(L)	1700 mm
Width (W)	1700 mm
Height (H)	310 mm
Weight	4000 kg

TRANSPORTATION AND WEIGHTS



Central ballast	2 pieces
Length(L)	4280 mm
Width (W)	1550 mm
Height (H)	630 mm
Weight	12000 kg

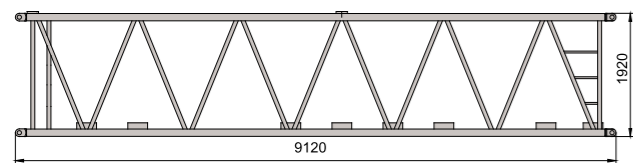
Main boom pivot section	1 piece
Length(L)	10250 mm
Width (W)	2115 mm
Height (H)	1920 mm
Weight	2210 kg

Main boom head	1 piece
Length(L)	11055 mm
Width (W)	2115 mm
Height (H)	2610 mm
Weight	2890 kg

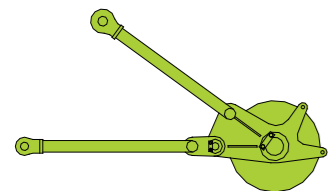
Main boom intermediate section of 3m	1 piece*
Length(L)	3120 mm
Width (W)	2115 mm
Height (H)	1920 mm
Weight	540 kg

Main boom intermediate section of 6m	1 piece*
Length(L)	6120 mm
Width (W)	2115 mm
Height (H)	1920 mm
Weight	890 kg

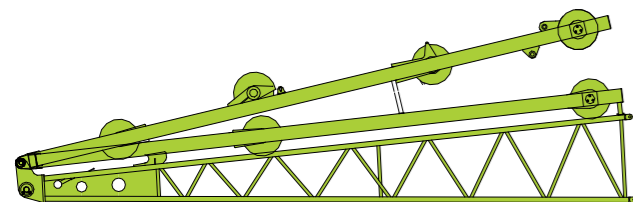
TRANSPORTATION AND WEIGHTS



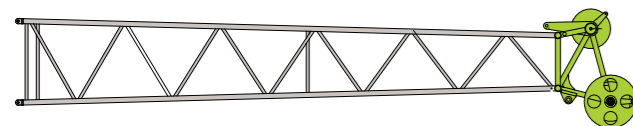
Main boom intermediate section of 9m	6 pieces*
Length (L)	9120 mm
Width (W)	2115 mm
Height (H)	1920 mm
Weight	1320 kg



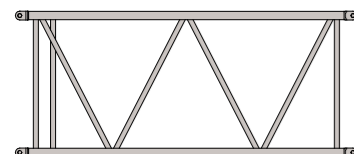
Tip boom	1 piece
Length (L)	2050 mm
Width (W)	1465 mm
Height (H)	1200 mm
Weight	210 kg



Luffing jib pivot section (with WA-frames)	1 piece*
Length (L)	9225 mm
Width (W)	1630 mm
Height (H)	2870 mm
Weight	3100 kg

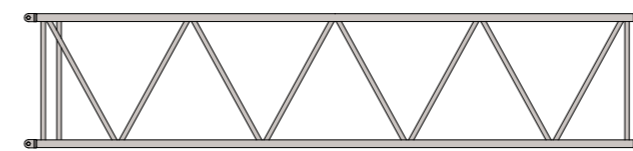


Luffing jib head	1 piece*
Length (L)	9440 mm
Width (W)	1305 mm
Height (H)	1800 mm
Weight	890 kg

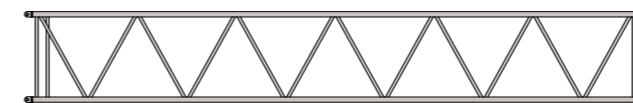


Luffing jib intermediate section of 3m	2 pieces*
Length (L)	3080 mm
Width (W)	1430 mm
Height (H)	1310 mm
Weight	210 kg

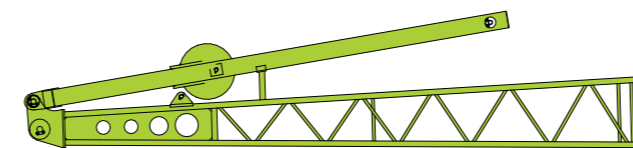
TRANSPORTATION AND WEIGHTS



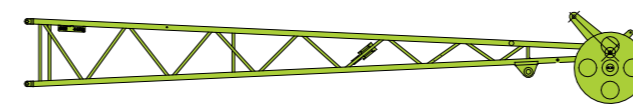
Luffing jib intermediate section of 6m	1 piece*
Length(L)	6080 mm
Width (W)	1430 mm
Height (H)	1310 mm
Weight	380 kg



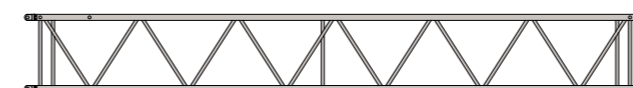
Luffing jib intermediate section of 9m	4 pieces*
Length(L)	9080 mm
Width (W)	1430 mm
Height (H)	1310 mm
Weight	550 kg



Fixed jib pivot section (with FA-frame)	1 piece*
Length(L)	6700 mm
Width (W)	1460 mm
Height (H)	1470 mm
Weight	910 kg



Fixed jib head	1 piece*
Length(L)	6930 mm
Width (W)	960 mm
Height (H)	760 mm
Weight	400 kg

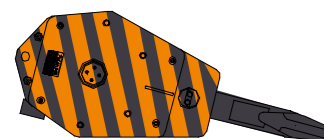


Fixed jib intermediate section of 6m	3 pieces*
Length(L)	6060 mm
Width (W)	960 mm
Height (H)	790mm
Weight	235 kg

TRANSPORTATION AND WEIGHTS



Load hook of 200t	1 piece*
Length (L)	2400 mm
Width (W)	1120 mm
Height (H)	810 mm
Weight	3232 kg



Load hook of 160t	1 piece*
Length (L)	2180 mm
Width (W)	900mm
Height (H)	810 mm
Weight	2377 kg



Load hook of 100t	1 piece*
Length (L)	1975 mm
Width (W)	920 mm
Height (H)	810 mm
Weight	1935 kg



Load hook of 50t	1 piece*
Length (L)	1965 mm
Width (W)	675 mm
Height (H)	810 mm
Weight	1356 kg



Load hook of 12t	1 piece*
Length (L)	965 mm
Width (W)	430 mm
Height (H)	430 mm
Weight	470 kg

Notes:

- Figures in the above table are schematic diagrams that are not drawn in fixed proportions. Dimensions shown are general boundary dimensions.
- Packaging weight is not included. Weights might be different from what are listed in the above table due to manufacturing error.
- Dimensions of actual products shall prevail if dimensions and weights differ from what are listed above due to parts improvement.
- Number of parts marked with * are determined by actual needs.

TECHNICAL DESCRIPTION



Engine

Model: Weichai WP10G336E344.
 Rated power: 247kW/1900r/min.
 Maximum torque: 1550Nm/1100~1400r/min.
 Emission standard: CHINA III for non-road mobile machinery.
 Volume of fuel oil tank: 700L.



Slewing mechanism

The slewing mechanism is composed of two hydraulic motors, two slewing reducers, control valves and a slewing bearing.
 Small gear of the output shaft rotates around the slewing bearing ring fixed on the chassis so that the slewing table makes slewing movement of 360°.



Hydraulic system

The hydraulic system is a pilot proportional controlled hydraulic system that comprises main pump, control valve, hydraulic motor, hydraulic oil tank, cooler, etc., featuring high efficiency, energy conservation, smooth and stable synchronized movement, safeness and stability.
 Heat dissipation power of oil cooler: 40kW.
 Volume of hydraulic oil tank: 1000L.



Hoisting mechanism

The hoisting mechanism comprises an axial variable-displacement piston motor, a built-in planetary reducer, a balance valve, a normally-closed brake and wire rope, which can be controlled independently. The primary hoisting mechanism has four gears of speed while the secondary hoisting mechanism has three.

	H1	H2
Rated single rope tension	13.5t	12t
Wire rope diameter	26mm	26mm
Wire rope length	380m	250m
Single rope speed	132m/min	110m/min



Derricking mechanism

The derricking mechanism comprises an axial piston motor, a built-in planetary reducer, a balance valve, a normally-closed brake and wire rope.

	Derricking mechanism
Rated single rope tension	10.5t
Wire rope diameter	26mm
Wire rope length	140m x2
Single rope speed	30m/min x2

TECHNICAL DESCRIPTION



Electrical system

DC 24V, negative ground, two storage batteries of 195AH.

Electrical devices mainly include: centralized display panel, engine preheating device, load moment limiter, power supply, indicating light, alarming device, illuminating light, electric fan, wiper, horn, hoisting limiter, etc. All these devices guarantee a safe and sound working environment for the crane.



Operator's cab

The operator's cab is a steel structure with tempered glasses around. The roof and the front windows are fitted with laminated glasses.

Sun shields, an adjustable seat, wipers, a cold/warm air conditioner, etc. are also equipped in the cab. The entire cab is decorated with soft interiors.



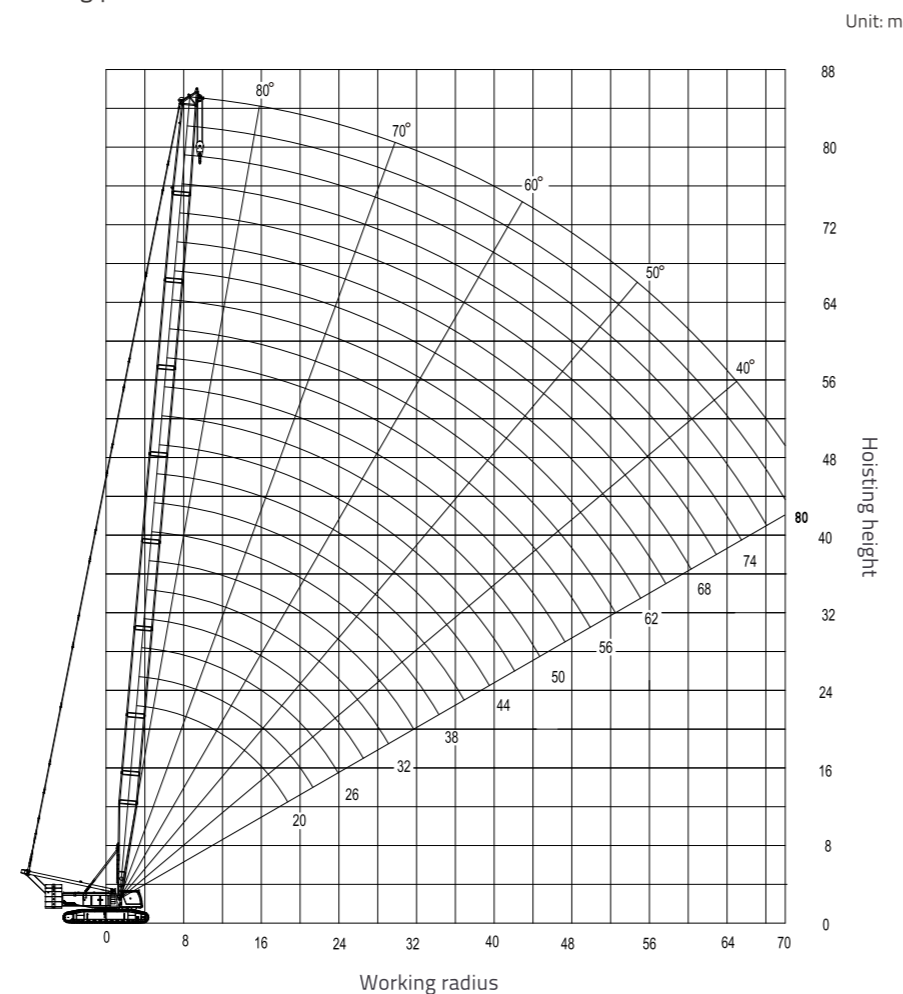
Load hook

Five types of load hooks are available:

Specification	Weight (kg)	Number of pulley
200t	3250	8
160t	2377	7
100t	1935	5
50 t	1356	2
12 t	470	0

LIFTING PERFORMANCE

Lifting performance of main boom



Attention:

1. For main boom operating mode, the range of main boom length is 20m~83m.
2. Influence caused by boom deflection is not considered in the figure of curves.

LIFTING PERFORMANCE

Lifting capacity charts of main boom operating mode

Unit: t

Radius (m)	Main boom length (m)										
	20	23	26	29	32	35	38	41	44	47	50
4.5	200										
6	171	169	165								
7	149	144	142	141	129						
8	132.8	130.8	129.8	125.8	123	117	104.4	102			
9	114.8	114.8	118.8	108.8	106	104.8	104	100	91.7	91.7	79.8
10	98.7	98.7	98.1	97	96	95.4	94.1	93.5	89.2	89	79.3
11	89.2	88.5	88.5	87.5	87.5	87	86.1	85.6	85	83	79
12	80.6	80.4	80.1	80	80	79.8	79.5	79	79	78.2	75.6
13	73.0	72.9	72.8	72.7	72.7	72.4	71.9	71.7	71.7	71.4	70.3
14	67.9	67.9	67.9	67.9	67.9	67.5	66.9	66.9	66.9	66.9	66.7
15	62.6	62.6	62.1	62.1	62.1	62.0	61.7	61.4	61.2	60.9	60.5
16	59	59	58.3	58.3	58.3	58.3	58.3	57.7	57.4	56.9	56.4
17	54.0	54.0	53.7	53.6	53.5	53.4	53.4	53.0	52.7	52.2	51.8
18	50.7	50.7	50.6	50.5	50.3	50.2	50.1	49.9	49.6	49.1	48.7
19	48.3	46.7	46.6	46.6	46.4	46.3	46.1	45.9	45.8	45.5	45.1
20		44.1	44	44	43.8	43.7	43.5	43.3	43.2	43.1	42.7
22			38.8	38.8	38.6	38.5	38.4	38.1	38	37.9	37.7
24			34.6	34.6	34.4	34.3	34.2	34	33.8	33.7	33.5
26				31.1	31	30.9	30.7	30.5	30.4	30.2	30.1
28					28.1	28	27.8	27.6	27.5	27.4	27.2
30							25.5	25.4	25.2	25	24.9
32							23.4	23.2	23	22.9	22.8
34								21.4	21.2	21	20.9
36									19.5	19.4	19.3
38										17.9	17.8
40										16.6	16.5
42											15.4
44											14.1

Note: Lifting capacities of tip boom operating mode are lifting capacities of the main boom of the same radius, which shall not exceed 12t.

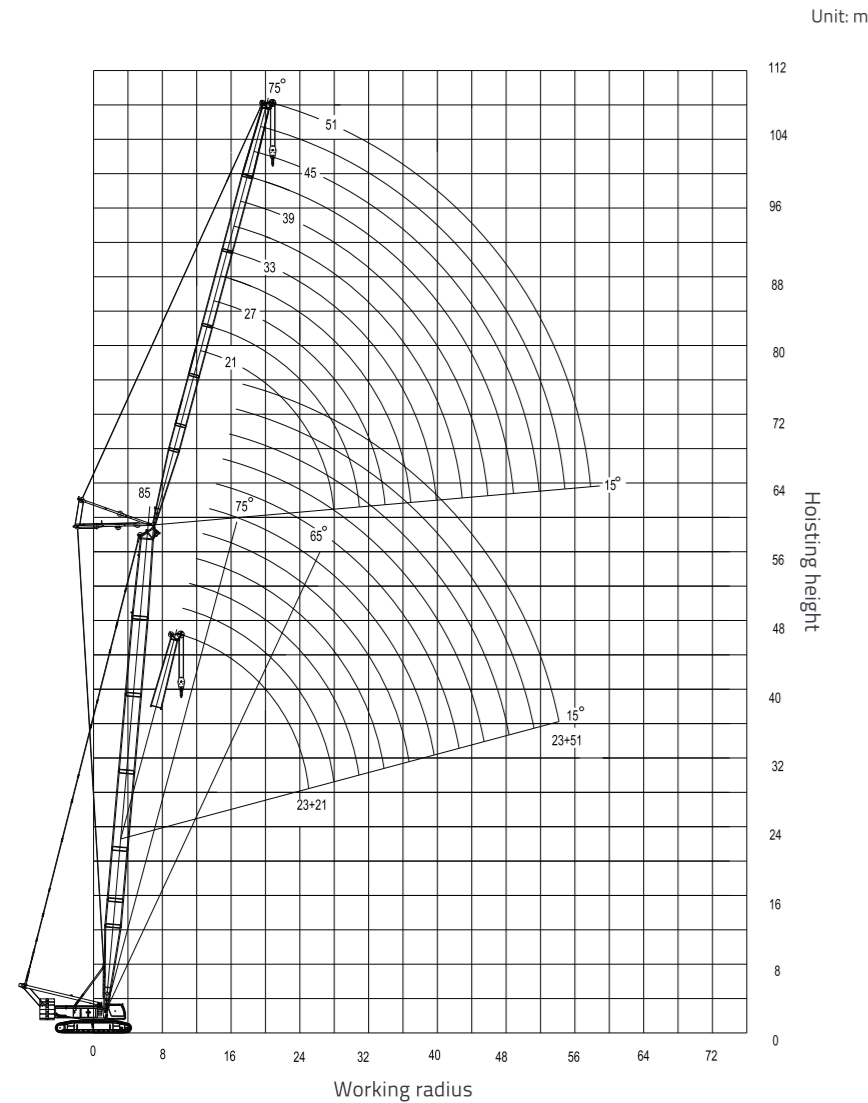
Unit: t

Radius (m)	Main boom length (m)										
	53	56	59	62	65	68	71	74	77	80	83*
9	77.5										
10	76.1	66.2									
11	74.8	66	61.2								
12	73.4	64.8	59.8	55.8	51.4	46.8					
13	69.0	63.4	57.6	54.1	50.1	46.3	43.7				
14	66	62.5	56.2	52.9	49.2	45.9	42	37.4	34	31.8	
15	59.9	58.2	55.0	50.6	46.4	44.0	40.9	36.6	33.3	31.1	
16	55.8	55.3	54.2	49	44.6	42.7	40.1	36	32.8	30.7	27.5
17	51.2	50.8	50.1	47.7	42.9	39.8	37.9	34.9	32.0	29.7	25.6
18	48.2	47.8	47.3	46.8	41.8	37.8	36.5	34.2	31.4	29	24.3
19	44.6	44.3	43.8	43.3	40.9	37.0	34.4	32.3	30.3	28.0	23.8
20	42.2	41.9	41.4	41	40.3	36.4	33	31	29.5	27.4	23.4
22	37.5	37.1	36.7	36.3	36	35.2	31.9	28.5	27.5	25.6	22.9
24	33.3	33.2	32.9	32.5	32.2	31.8	30.7	27.5	24.8	23.5	21.8
26	29.9	29.8	29.5	29.3	29	28.6	28.3	26.5	23.5	21.5	21.6
28	27	26.9	26.6	26.5	26.3	26	25.6	25	22.7	20.5	19.8
30	24.5	24.4	24.2	24	23.8	23.6	23.3	22.7	21.9	19.7	18.2
32	22.4	22.3	22	21.8	21.7	21.5	21.3	20.7	20.7	19	17.2
34	20.5	20.4	20.2	20	19.8	19.6	19.4	18.9	19	18.4	16.5
36	18.9	18.8	18.5	18.4	18.2	18	17.8	17.2	17.4	17.2	15.9
38	17.5	17.3	17.1	16.9	16.8	16.5	16.3	15.8	15.9	15.7	15.4
40	16.2	16.1	15.8	15.6	15.5	15.2	15	14.5	14.6	14.4	14.3
42	15	14.9	14.7	14.5	14.3	14.1	13.9	13.3	13.5	13.3	13.1
44	14	13.8	13.6	13.4	13.3	13	12.8	12.3	12.4	12.2	12.1
46	13	12.9	12.7	12.5	12.3	12.1	11.9	11.3	11.5	11.3	11.1
48		12	11.8	11.6	11.5	11.2	11	10.4	10.6	10.4	10.2
50		11.2	11	10.8	10.7	10.4	10.2	9.7	9.8	9.6	9.5
52			10.3	10.1	9.9	9.7	9.5	8.9	9.1	8.9	8.7
54				9.4	9.3	9	8.8	8.3	8.4	8.2	8.1
56					8.6	8.4	8.2	7.6	7.8	7.6	7.4
58						8	7.8	7.6	7	7.2	6.9
60							7.3	7.1	6.5	6.7	6.3
62								6.6	6	6.2	5.8
64									5.5	5.7	5.3
66										5.1	4.9
68											4.9
70											4.3

Note: Lifting capacities of tip boom operating mode are lifting capacities of the main boom of the same radius, which shall not exceed 12t.

LIFTING PERFORMANCE

Lifting performance of luffing jib operating mode



- Attention:
1. For luffing jib operating mode, the range of main boom length is 23m-56m and the range of luffing jib is 21m-51m.
 2. For luffing jib operating mode, the longest boom combination is 56m+51m.
 3. Influence caused by boom deflection is not considered in the figure of curves.

Lifting capacity charts of luffing jib operating mode

Unit: m

Main boom	23																	
Jib	21			24			27			30			33					
Radius (m)	Main boom angle (°)																	
	85	75	65	85	75	65	85	75	65	85	75	65	85	75	65			
12	52.9			48.3			43						36.7			31.2		
14	49.3			47.9			42.5						36.1			30.8		
16	40.1			40.8			40.8						36.1			30.8		
18	33.3	49.1		34.2			34.5						34.8			30.4		
20	27.9	42.1		29.1	42.5		29.6						29.9			29.3		
22	23.3	35.2		24.9	35.8		25.6	36					26.1	32.1		26.2		
24	18.9	29.7		21.3	30.6		22.3	31					22.9	31.2		23.1	27	
26		25.1	30.3	18	26.4		19.4	27					20.2	27.3		20.6	27	
28		20.7	27.7		22.8	27.6	16.8	23.6					17.8	24.1		18.3	24.2	
30			25.5		19.5	25.4	14.1	20.8	25.3				15.7	21.4	25.2	16.3	21.6	
32				22			23.6		18.1	23.5	13.5		19	23.4	14.5	19.4	23.2	
34							20.6		15.5	21.6			16.9	21.7	12.8	17.4	21.6	
36													19	14.8	19.8	10.9	15.6	20
38													16.4			17.7	13.9	18.1
40															15.6	12	16.3	
42																	14.6	
44																	12.9	
46																		
48																		
50																		
52																		
54																		
56																		
58																		
60																		

Unit: t

LIFTING PERFORMANCE

Lifting capacity charts of luffing jib operating mode

Main boom	23												
Jib	36			39			42			45			
Radius (m)	Main boom angle (°)												
	85	75	65	85	75	65	85	75	65	85	75	65	
16	26.3						22.7			19.8			
18	26						22.4			19.4		17	
20	25.6						22			19.1		16.6	
22	25						21.6			18.7		16.3	
24	23.3						21.2			18.4		15.9	
26	20.8	22.9					20.7	19.6		18		15.6	
28	18.7	22.8					18.9	19.5		17.5	16.9	15.3	14.7
30	16.8	21.8					17	19.4		17	16.7	14.9	14.5
32	15.1	19.6					15.4	19.3		15.5	16.6	14.5	14.3
34	13.6	17.7	20.1	14	17.9		14.1	16.4		14.2	14.1		
36	12.1	16	20.1	12.7	16.3	17.2	12.9	16.2		13.1	13.9		
38	10.6	14.5	18.3	11.4	14.8	17.3	11.7	14.9	14.8	12	13.7		
40		13.1	16.7	10.2	13.5	16.9	10.6	13.7	14.8	11	13.2	12.7	
42		11.6	15.2	8.8	12.3	15.4	9.6	12.5	14.8	10	12.7	12.6	
44			13.8		11	14.1	8.5	11.4	14.2	9.1	11.7	12.6	
46			12.3		9.7	12.9		10.4	13.1	8.2	10.7	12.5	
48						11.7		9.3	12		9.8	11.9	
50									11		8.9	11.3	
52										9.9		10.4	
54												9.5	
56													
58													

Unit: t

Main boom	23						
Jib	48			51			
Radius (m)	Main boom angle (°)						
	85	75	65	85	75	65	
18	14.9					9.4	
20	14.5					9	
22	14.2					8.7	
24	13.9					8.4	
26	13.6					8.1	
28	13.3					7.8	
30	13	12.6				7.5	
32	12.7	12.4				7.3	10.8
34	12.4	12.2				7.1	10.6
36	12.1	12				6.9	10.4
38	11.7	11.8				6.7	10.3
40	11	11.6				6.5	10.1
42	9.8	11.5	10.9	6.4	9.9	9.4	
44	9.2	11.2	10.8	6.3	9.7	9.3	
46	8.6	10.9	10.7	6.2	9.5	9.2	
48	7.8	9.9	10.6	5.9	9.3	9.1	
50	6.9	9.1	10.5	5.6	8.3	9	
52		8.5	10.4	5.4	7.7	8.8	
54		7.6	9.3		7.3	8.7	
56			8.8		6.7	7.9	
58			8.2			7.4	
60							

Unit: t

LIFTING PERFORMANCE

Lifting capacity charts of luffing jib operating mode

Unit: t

Main boom	38														
Jib	21			24			27			30			33		
Radius (m)	Main boom angle (°)														
	85	75	65	85	75	65	85	75	65	85	75	65	85	75	65
12	48.8														
14	48.3			42.2			37.6								
16	46.1			41.6			37.1			32			27.4		
18	38			38.6			36.6			31.8			27.3		
20	31.8			32.6			32.8			31.6			27.1		
22	26.7	36.8		27.9			28.3			28.7			26.8		
24	22.3	33.1		24	33		24.7			25.1			25.3		
26		30.1		20.6	29.9		21.5	29.8		22.1	28		22.5		
28		27.5		17.3	27.4		18.8	27.3		19.6	27.2		20	24	
30		25.3			25.3		16.2	25.2		17.3	25		17.9	24.2	
32		21	21.9		23			23.3		15.2	23.2		16	23.1	
34			20.3		19.7	20.2		20.8		13.1	21.4		14.3	21.5	
36			19			18.9		18.2	18.7		19.1		12.5	19.5	
38			17.8			17.7		15.6	17.6		16.9	17.5		17.5	17.3
40						16.6			16.5		14.9	16.4		15.8	16.3
42									15.6			15.5		14.1	15.4
44									14.7			14.6		12.3	14.5
46												13.9			13.8
48															13.1
50															12.4
52															
54															

Main boom	38														
Jib	36			39			42			45					
Radius (m)	Main boom angle (°)														
	85	75	65	85	75	65	85	75	65	85	75	65			
16	23.7														
18	23.5					20.5				17.9			15.8		
20	23.3					20.3				17.7			15.6		
22	23.1					20				17.5			15.3		
24	22.9					19.8				17.2			15.1		
26	22.6					19.6				17			14.8		
28	20.3	20.4				19.3				16.8			14.6		
30	18.2	20.6				18.4	17.7			16.5			14.3		
32	16.5	20.7				16.7	17.8			16.2	15.4		14.1	13.4	
34	14.8	20.8				15.2	17.8			15.1	15.4		13.8	13.4	
36	13.4	19.7				13.8	17.8			13.8	15.3		13.6	13.3	
38	11.9	17.8				12.5	17.8			12.6	15.3		12.4	13.2	
40	10.4	16.2	16.2			11.3	16.4			11.5	15.2		11.8	13.1	
42		14.7	15.2	10	15	15.1	10.5	14.9		10.5	14.9		10.8	13	
44		13.2	14.4			13.7	14.3	9.4	13.7	13.3	9.9	12.9			
46		11.8	13.6			12.4	13.5	8.3	12.6	13.2	9	12.4	11.5		
48			13			11.2	12.8			11.5	12.7	8	11.7	11.6	
50			12.3			12.2	10.5	12.1		10.5	12.1		10.8	11.6	
52			11.7			11.6		9.4	11.5		9.9	11.4			
54						11.1				11		9	10.8		
56						10.6				10.5			10.4		
58										10			9.9		
60													9.5		

Unit: t

LIFTING PERFORMANCE

Lifting capacity charts of luffing jib operating mode

Unit: t

Main boom	38					
Jib	48			51		
Radius (m)	Main boom angle (°)					
	85	75	65	85	75	65
20	13.7					9
22	13.5					8.7
24	13.2					8.3
26	13					8
28	12.7					7.8
30	12.5					7.5
32	12.2					7.3
34	12	11.6				7.1
36	11.8	11.5				6.9
38	11.6	11.4				6.7
40	11.2	11.3				6.5
42	10.6	11.2				6.4
44	10.1	11.1				6.2
46	9.3	11				6.1
48	8.5	10.8	10			6
50	7.7	10.6	10			5.7
52	6.8	9.7	10			5.4
54		9.2	10			5.2
56		8.6	9.9			7.7
58		7.8	9.8			7.3
60			9.4			7
62			8.9			8.3
64			8.5			7.4
66						7

Main boom	53														
Jib	21			24			27			30			33		
Radius (m)	Main boom angle (°)														
	85	75	65	85	75	65	85	75	65	85	75	65	85	75	65
12															
14	38.1					33.4									
16	37.7					33.2			29.2			25.7		22.6	
18	37					32.9			29			25.6		22.5	
20	35.6					32.3			28.7			25.4		22.4	
22	29.9					30.9			28.3			25.1		22.2	
24	25.2					26.5			26.8			24.8		22	
26	20.9	28.4				22.8			23.4			23.2		21.7	
28		26				19.5	25.8		20.5	25.7		21.1		20.5	
30		23.9				16	23.8		17.9	23.7		18.7	22.6	18.8	
32		22.2					22		15.3	21.9		16.6	21.8	17.2	19.9
34		20.6					20.5		20.4	20.4		14.5	20.3	15.4	20.1
36		19.2					19.2		19.1			18.9	18.9	13.7	18.8
38						15.9			18			17.9		17.8	17.6
40						15			14.8			16.8		16.7	16.6
42						14.1			14			15.4	13.8	15.7	15.6
44						13.3			13.2			13.1		14.7	12.9
46									12.5			12.4		12.2	13.9
48									11.8			11.7		11.6	12.1
50												11.2		11.1	10.9
52														10.5	10.4
54															9.9
56															9.5

Unit: t

LIFTING PERFORMANCE

Lifting capacity charts of luffing jib operating mode

Unit: t

Main boom	53											
Jib	36			39			42			45		
Radius (m)	Main boom angle (°)											
	85	75	65	85	75	65	85	75	65	85	75	65
18	19.9			17.6								
20	19.8			17.5			15.5			13.8		
22	19.6			17.3			15.4			13.7		
24	19.5			17.2			15.2			13.5		
26	19.3			17			15.1			13.4		
28	19			16.9			14.9			13.2		
30	18.2			16.7			14.8			13		
32	16.8	17.2		16.2			14.6			12.8		
34	15.8	17.5		15.4	15.2		14.4			12.7		
36	14.3	17.7		14.4	15.4		13.5	13.4		12.5	11.8	
38	12.8	17.5		13.3	15.4		13	13.4		12.3	11.8	
40	11.4	16.5		12	15.4		12.4	13.3		11.6	11.8	
42		15.5		10.8	15.4		11.3	13.3		11	11.8	
44		14.7		9.6	14.5		10.2	13		10.3	11.8	
46		13.9	11.9		13.8		9.2	13		9.4	11.8	
48		13.1	11.3		13.1	11.2		13		8.5	11.8	
50		11.7	10.8		12.3	10.6		12.3	10.5	7.6	11.7	
52			10.3		11.1	10.1		11.6	10		11.2	9.8
54			9.8			9.7		10.5	9.5		10.6	9.4
56			9.3			9.2		9.5	9.1		9.7	8.9
58			8.9			8.8			8.7		8.8	8.5
60						8.4			8.3			8.2
62						8.1			7.9			7.8
64									7.6			7.5

Unit: t

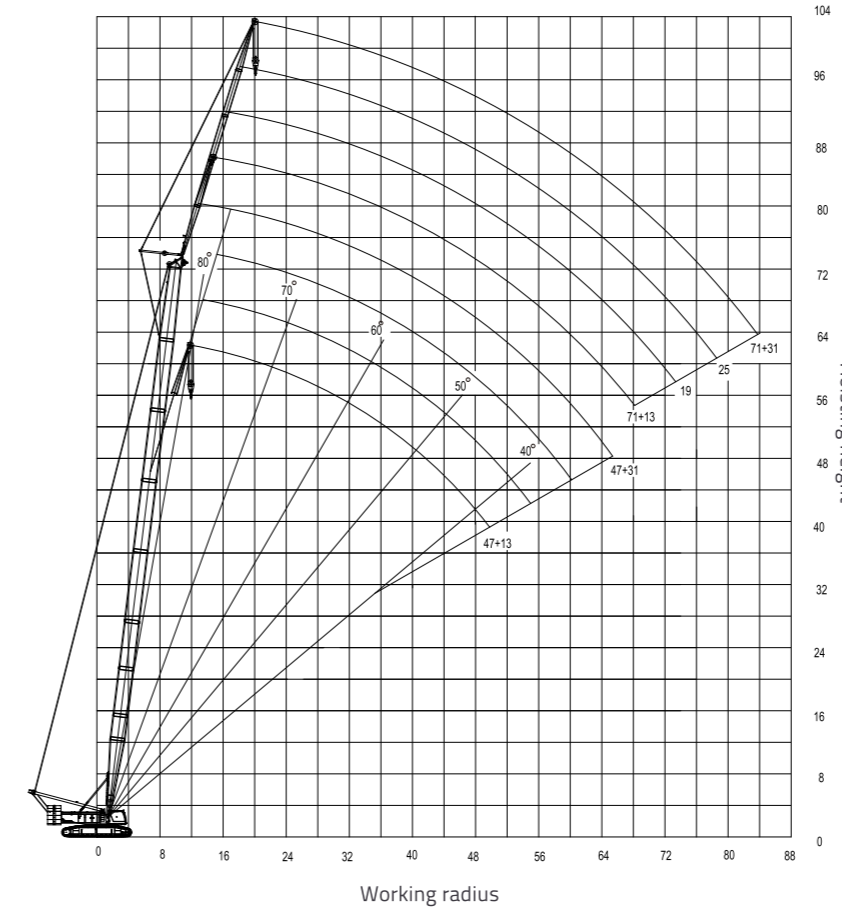
Main boom	53					
Jib	48			51		
Radius (m)	Main boom angle (°)					
	85	75	65	85	75	65
20	12.3					
22	12.2			8.4		
24	12			8.1		
26	11.8			7.8		
28	11.6			7.6		
30	11.5			7.3		
32	11.3			7.1		
34	11.1			6.9		
36	10.9			6.7		
38	10.8	10.4		6.5		
40	10.6	10.4		6.3	9.1	
42	10.4	10.4		6.2	9.1	
44	10	10.3		6.1	9	
46	9.5	10.3		5.9	8.9	
48	8.9	10.2		5.8	8.9	
50	8.1	10.1		5.7	8.8	
52	7.3	10		5.4	8.7	
54		9.9	8.7	5.1	8.6	
56		9.8	8.8	4.9	8.4	7.7
58		8.9	8.4		8.3	7.7
60		8.4	8		7.4	7.7
62		7.6	7.7		7	7.5
64			7.4		6.7	7.2
66			7			6.9

LIFTING PERFORMANCE

Lifting performance of fixed jib

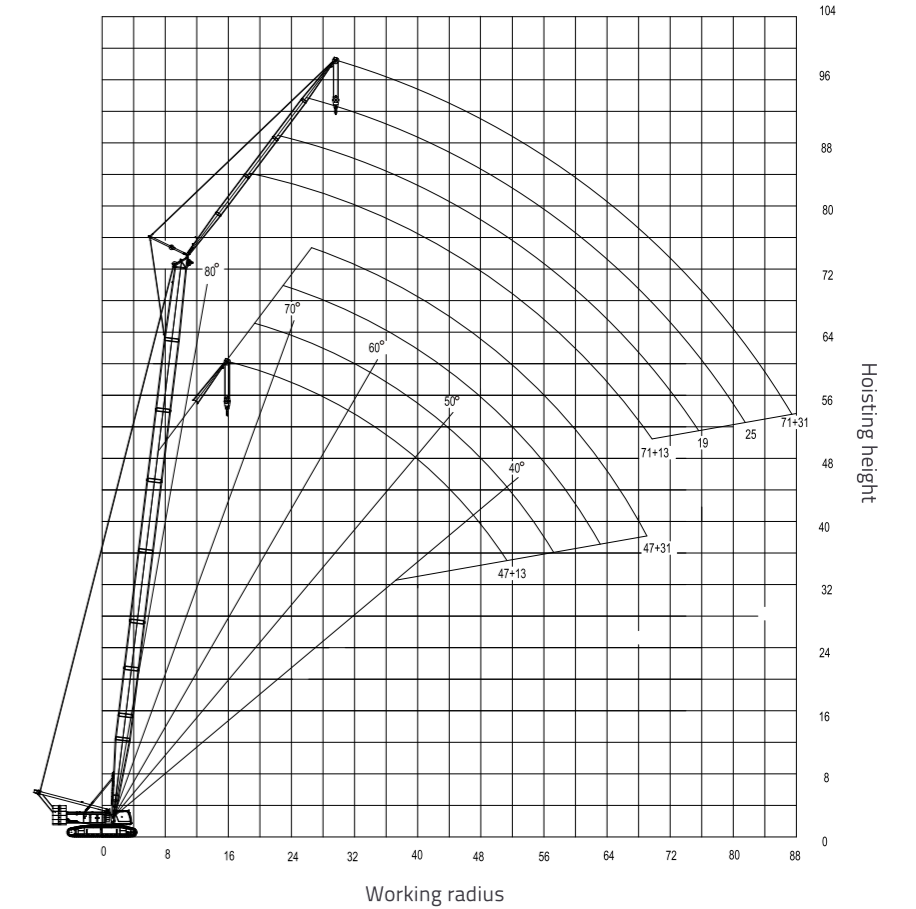
Included angle between fixed jib and main boom is 10°

Unit: m



Included angle between fixed jib and main boom is 30°

Unit: m



Attention:

1. For fixed jib operating mode, main boom and fixed jib cannot be operated simultaneously.
2. For fixed jib operating mode, the range of main boom length is 47m-71m and the range of fixed jib length is 13m-31m.
3. Influence caused by boom deflection is not considered in the figure of curves.

LIFTING PERFORMANCE

Lifting capacity charts of fixed jib operating mode

Unit: t

Main boom	47							
Fixed Jib	13		19		25		31	
Radius (m)	Fixed jib angle (°)							
	10	30	10	30	10	30	10	30
14	25		17.5					
16	24.6	19.9	17.2		11.5			
18	24.2	19.7	16.7		11.5		7.8	
20	24	19.4	16.2	12.5	11.5		7.6	
22	23.5	19.2	15.7	12.9	11.5		7.4	
24	23.2	19	15.5	12.6	11.4	7.9	7.1	
26	22.9	18.8	15.1	12.5	9.8	7.8	7	
28	22.4	18.6	14.7	12.2	9.5	7.7	6.8	5.1
30	21.4	18.4	14.4	12.1	9.4	7.5	6.6	5
32	19.6	17.8	13.9	11.9	9.1	7.4	6.5	4.9
34	18	17.4	13.7	11.8	8.9	7.3	6.3	4.8
36	16.6	16	13.4	11.6	8.7	7.1	6.1	4.6
38	15.4	14.7	13.8	11.5	8.5	7	6	4.6
40	14.2	13.7	13.5	11.4	8.2	6.9	5.8	4.4
42	13.3	12.7	13.2	11.3	8.1	6.8	5.6	4.3
44	12.3	11.8	12.7	11.2	8	6.6	5.4	4.2
46	11.6	11	11.8	11.1	7.8	6.6	5.3	4.1
48	10.8	10.3	11.1	10.7	7.7	6.5	5.1	4
50		9.6	10.4	10	7.5	6.4	4.9	3.9
52			9.8	9.4	7.3	6.3	4.8	3.8
54			9.2	8.8	7.1	6.2	4.7	3.8
56				8.2	7.1	6.2	4.6	3.8
58					6.9	6.2	4.4	3.7
60					6.8	6.2	4.3	3.6
62						6.4	4.2	3.6
64							4.1	3.5

Main boom	59							
Fixed Jib	13		19		25		31	
Radius (m)	Fixed jib angle (°)							
	10	30	10	30	10	30	10	30
16	23		17					
18	22.9	19.4	16.6		11.5			
20	22.8	19.2	16.2		11.5		7.5	
22	22.7	19	15.9	12.2	11.3		7.3	
24	22.6	18.9	15.6	12.1	11.1		7.1	
26	22.6	18.7	15.3	11.9	10.9	7.8	7	
28	22.6	18.6	15	11.8	10.7	7.7	6.8	
30	20.7	18.5	14.7	11.7	9.5	7.6	6.6	5
32	19	18.3	14.4	12.1	9.4	7.4	6.5	5
34	17.3	16.8	14.1	11.9	9.2	7.4	6.4	4.8
36	15.9	15.4	14.5	11.8	8.9	7.3	6.2	4.7
38	14.7	14.2	14.2	11.7	8.8	7.2	6.1	4.6
40	13.6	13.1	13.9	11.6	8.7	7	6	4.6
42	12.6	12.2	12.8	11.5	8.5	7	5.9	4.5
44	11.6	11.3	12	11.4	8.3	6.9	5.8	4.4
46	10.9	10.5	11.1	11	8.2	6.8	5.6	4.3
48	10.1	9.8	10.4	10.2	8	6.7	5.5	4.2
50	9.4	9.1	9.7	9.5	7.8	6.6	5.4	4.2
52	8.8	8.5	9.1	8.9	7.7	6.6	5.2	4.1
54	8.2	7.9	8.5	8.3	7.6	6.5	5	4
56	7.7	7.4	8	7.8	8.2	6.4	4.9	3.9
58	7.1	6.9	7.5	7.3	7.7	6.3	4.8	3.8
60		6.4	7	6.8	7.2	6.6	4.7	3.8
62			6.5	6.3	6.8	6.5	4.6	3.8
64			6.1	5.9	6.4	6.2	4.5	3.7
66				5.5	6	5.8	4.3	3.7
68					5.6	5.5	4.6	3.6
70						5.1	4.5	3.6
72							4.8	4.5
74								4.4

Unit: t

LIFTING PERFORMANCE

Lifting capacity charts of fixed jib operating mode

Unit: t

Main boom	71							
Fixed Jib	13		19		25		31	
Radius (m)	Fixed jib angle (°)							
	10	30	10	30	10	30	10	30
16	22.6							
18	22.5		16.1					
20	22.2	15	15.9		10.7		7.1	
22	22	15	15.6		10.5		7	
24	21.9	15.2	15.4	11	10.4		6.8	
26	21.8	15.3	15.2	11.1	10.2	7.8	6.7	
28	21.6	15.4	15	11.3	10	7.7	6.5	
30	19.7	16.4	14.7	11.4	9.9	7.5	6.5	4.6
32	18	16.5	14.5	11.4	9.8	7.4	6.3	4.6
34	16.6	16.2	14.3	11.4	9.3	7.4	6.2	4.6
36	15.2	14.9	14	11.4	9.2	7.4	6.1	4.6
38	14	13.7	14.3	11.3	9	7.2	6	4.5
40	12.9	12.6	13.2	11.1	8.8	7.1	5.9	4.5
42	11.9	11.6	12.2	11	8.7	7	5.8	4.4
44	11	10.7	11.3	11.3	8.6	7	5.7	4.4
46	10.2	9.9	10.5	10.5	8.4	7	5.6	4.3
48	9.4	9.2	9.7	9.7	8.3	6.9	5.5	4.3
50	8.8	8.6	9	9	8.5	6.8	5.4	4.2
52	8.1	7.9	8.4	8.4	8.3	6.7	5.4	4.2
54	7.5	7.4	7.8	7.8	8.1	6.6	5.3	4.2
56	7	6.8	7.2	7.2	7.5	6.5	5.1	4.1
58	6.5	6.3	6.8	6.7	7	6.4	5	4
60	6	5.8	6.3	6.2	6.5	6.6	4.9	3.9
62	5.6	5.4	5.9	5.8	6.1	6.2	4.8	3.8
64	5.2	5	5.4	5.4	5.7	5.8	4.8	3.8
66	4.8	4.6	5.1	5	5.3	5.4	4.7	3.8
68		4.3	4.7	4.6	4.9	5	4.6	3.7
70			4.3	4.3	4.6	4.6	4.5	3.6
72			4	4	4.3	4.3	4.4	3.5
74				3.7	3.9	4	4.2	3.4

MAJOR TECHNICAL PARAMETERS

Item	Unit	ZCC2000-1	
Max. lifting capacity	t	200	
Max. lifting moment	t·m	1043	
Main boom operating mode	Main boom length	20~83	
	Luffing jib length	21~51	
Luffing jib operating mode	Max. lifting capacity	52.9	
	Main boom angle	85, 75, 65	
	Connection length of main boom	23~56	
	Max. length of main boom + luffing jib	56+51	
Fixed jib operating mode	Fixed jib length	13~31	
	Max. lifting capacity	25	
	Main boom angle	10,30	
	Connection length of main boom	47~71	
Primary hoisting winch	Max. length of main boom + fixed jib	71~31	
	Single rope speed	m/min	132 (the outermost layer)
Secondary hoisting winch	Rope diameter	mm	Φ26
	Single rope speed	m/min	110 (the outermost layer)
Derricking winch	Rope diameter	mm	Φ26
	Single rope speed	m/min	30×2 (the outermost layer)
Slewing speed	rpm	0~1.0	
Traveling speed	km/h	0~1.1	
Ground pressure	MPa	0.103	
Dead weight with basic boom	t	183	
Rear counterweight	t	70.75	
Central ballast	t	24	
Engine	Rated power / rotational speed	kW/rpm	247/1900
	Max. output torque / rotational speed	Nm/rpm	1550/1100~1400
	Model	—	WP10G336E344
Distance between two tracks × contact length of track × width of track pad	mm	6200×7750/1100	
Transport weight of basic machine	t	39	

Note:

1. Single rope speed of winch, slewing speed and traveling speed vary with the weight of load.

2. The value of ground pressure is the mean value of the operating mode with the basic boom. The actual maximum ground pressure is determined according to the actual operating mode.