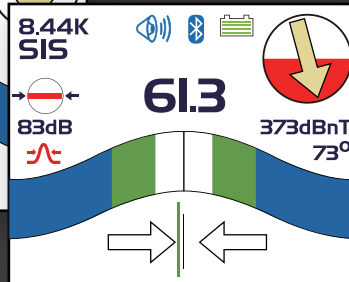
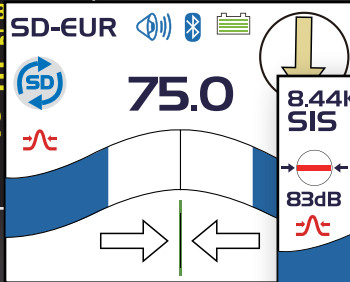
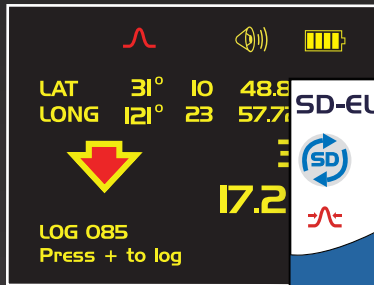




VIVAX
METROTECH

vLoc-5000



Utility Locating System

Signal Select

Signal Direction

Distortion Alert

Data Utilization

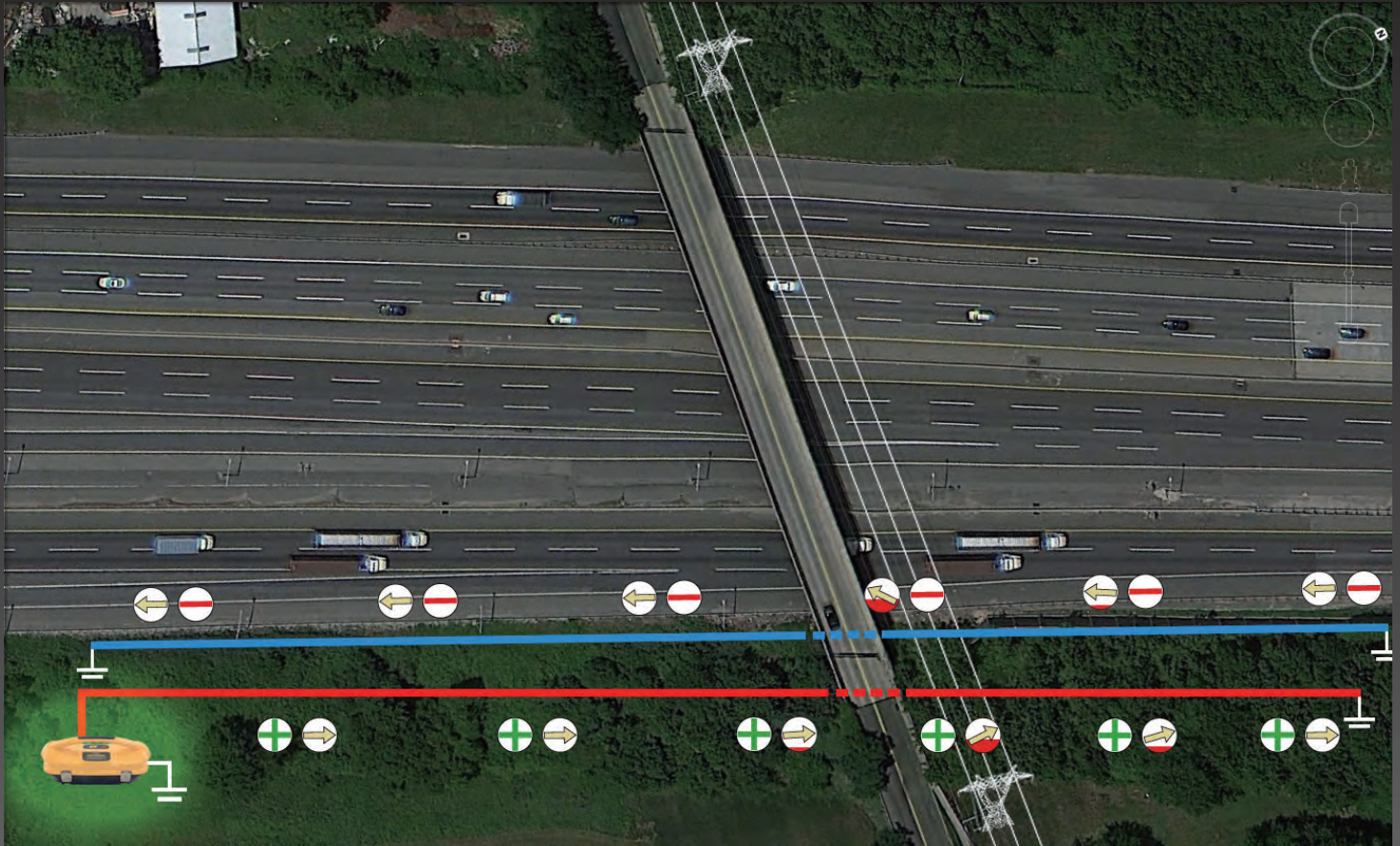
Data Management

Internal Data Logging

Internal GPS



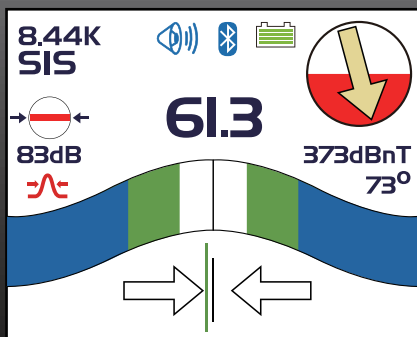
The vLoc-5000 - Boost your confidence while locating and pin-pointing buried pipes and cables. Vivax-Metrotech introduces the vLoc-5000 with its state of the art algorithm to provide sophisticated and intuitive user interface. The information is fast and easy to understand, it makes the locate process easier and faster. The vLoc-5000 can store the locate information and GPS in its internal data logger. The receiver comes standard with a Lithium-Ion rechargeable battery pack which eliminates the need to constantly purchase batteries.



Accuracy

vLoc-5000 Receiver is Intuitive and Easy-To-Use

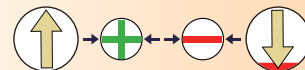
The vLoc-5000 combines Signal Select, Signal Direction and Distortion Alert in one locator. All information including GPS coordinates can be stored internally and retrieved later using My Locator2.



The vLoc-5000 offers the Guidance Compass™ that combines features below to aid Positive Line ID.

Signal Select™

Improves positive utility identification and assists in the notification of "ghost" signal's as return currents.



Distortion Alert™

Immediately warns operator of magnetic field distortion from hidden utilities.



The Loc-10TxSIS

Powerfully Efficient Performance


Loc-10TxSIS combines Signal Select (SiS) and Signal Direction (SD) features to give you the best combination for positive identification. The transmitter measures line parameters in absolute physical units (volts, ohms, amps), to give critical Insights into the quality of a complete line circuit. Essential information is easily visible on the transmitter's display screen. Other enhancements include high capacity Ni-MH rechargeable battery technology that lowers operating costs.

- Broad range of active frequencies between 16Hz and 200 kHz are supported for direct mode locating
- Up to 2 frequencies may be activated simultaneously to select the best signal frequency for the locate situation
- Constant current, selectable in steps up to a maximum 1A
- Multiple inductive frequencies from 8 kHz up to 200 kHz
- Auto impedance matching optimizes the output efficiency

- Optional A-frame mode for sheath fault locating.
- Auto protection to 250V AC against live power connection to the transmitter.

Features

Receiver and Transmitter

- Signal Select™ and Signal Direction offer Positive Line ID 
- Distortion Alert™ assists in recognizing signal bleed-over
- Peak Response, Null Response, L/R needle
- Bluetooth® wireless communication enabled in receiver
- Bright color graphical display
- Broad frequency selection between 16Hz and 200 kHz



Data Utilization

Improved Wireless Data Communication

With Bluetooth® wireless communication technology built-in, the receiver can pair with other Bluetooth-enabled devices for short-range communication.

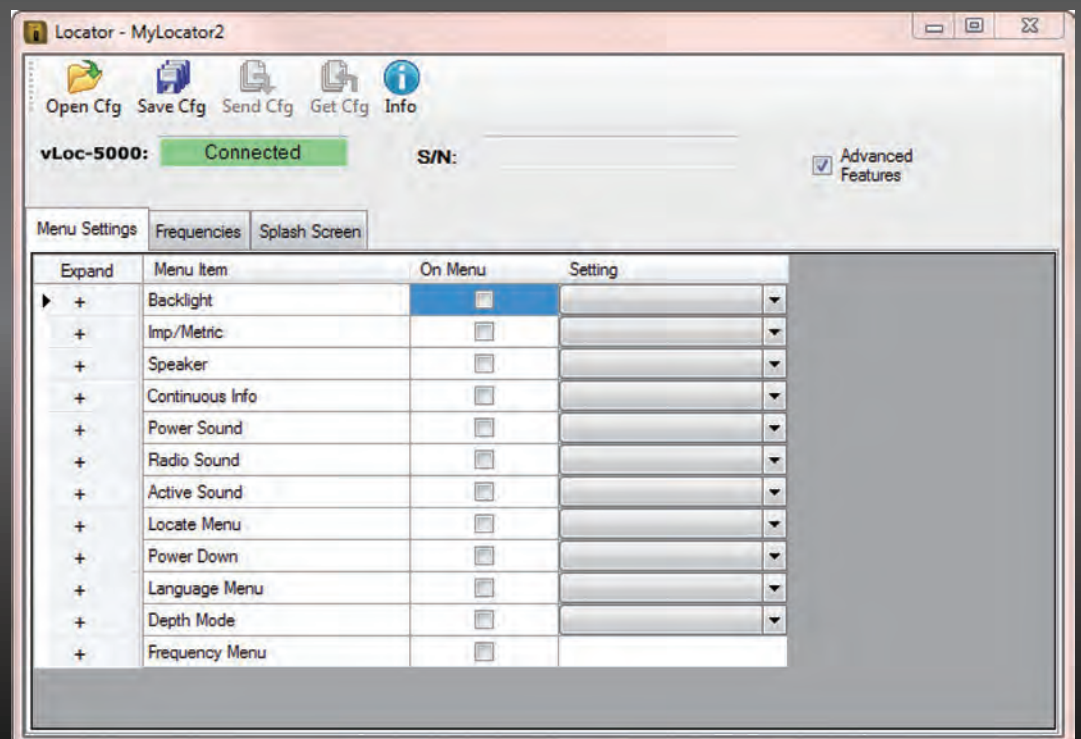
Global Positioning System (GPS)

The internal GPS and data logging records a site location reference and combines it with all the other information available:

- Date & Time
- GPS Co-ordinates
- Frequency used
- Depth & Current
- Signal Select
- Signal Direction
- Distortion
- Mode of operation

MyLocator2

MyLocator2 configuration tool is a software package that enables the operator to configure and update the vLoc-5000 locators. MyLocator2 is also used to transfer data logs from the locator to a host computer.

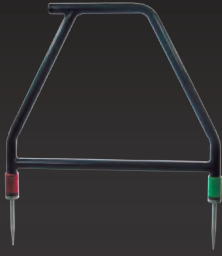




Receiver Accessories (specify model of receiver when ordering accessories)

A-frame

For detecting the position of ground/sheath fault.



Bluetooth

Enables Bluetooth connectivity to other Bluetooth devices such as GPS antennas. The Bluetooth module can be retrofitted to vLoc series 2 receivers by the user.



Charging Lead (12V DC)

12ft (4m) long lead to charge the receiver battery in a vehicle.



Signal Stethoscope

Used for cable identification.

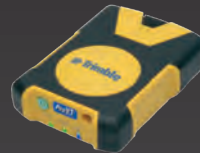


GPS

Vivax-Metrotech Bluetooth is compatible with many other GPS units including high accuracy GPS.



10ft (3m) accuracy



3ft (1m) accuracy

Rechargeable Battery and Charger

Lithium-Ion rechargeable battery pack and charger



Transmitter Accessories (specify model of transmitter when ordering accessories)

VM-Clamps

To apply the transmitter signal to a target cable when no access to the conductor is possible. Dia. 2" (50mm), dia. 4" (100mm), dia. 5" (125mm), 18" flexible (450mm), signal select clamp dia. 4" (100mm)



LPC Separation Filter

To apply the transmitter signal to cables carrying up to 240V AC.



Loc-10Tx - Power Lead (12V DC)

30ft (10m) lead to power the transmitter from a vehicle.



Rechargeable Battery Packs and Chargers

Loc-10Tx (10 watt transmitter)
Ni-MH rechargeable battery packs and chargers



Vivax-Metrotech Corp. (Headquarters)

3251 Olcott Street, Santa Clara, CA 95054, USA
T/Free: 800-446-3392
Tel: +1-408-734-1400
Fax: +1-408-734-1415
Email: sales@vxmt.com

Ventas para América Latina

3251 Olcott Street, Santa Clara, CA 95054, USA
T/Free: 800-624-6210
Tel: +1-408-454-7159
Fax: +1-408-743-5597
Email: VentasparaAmericaLatina@vxmt.com

Vivax-Metrotech AUS

Unit 1, 176 South Creek Rd Cromer
NSW 2099
Tel: +61 (0)2 9972 9244
Fax: +61 (0)2 9972 9433
Email: sales@vxmtaus.com

Vivax-Metrotech Ltd.

Unit 18-19, Woodside Road,
South Marston Ind. Est., Swindon, SN3 4WA, UK
Free Phone: 0800 0281811
Tel: +44(0)1793 822679
Email: salesUK@vxmt.com

Vivax Canada Inc.

41 Courtland Ave Unit 6, Vaughan,
ON L4K 3T3, Canada
Tel: +1-289-846-3010
Fax: +1-905-752-0214
Email: CanadianSales@vxmt.com



Disclaimer: Product and accessory specification and availability information is subject to change without prior notice. V1.2 (Nov 2014)