

CHEROKEE®  
— AUTHENTIC —  
WORKWEAR  
REVOLUTION

CHEROKEE®  
— AUTHENTIC —  
WORKWEAR  
CORE STRETCH

CHEROKEE®  
— AUTHENTIC —  
WORKWEAR  
ORIGINALS

CHEROKEE®  
— AUTHENTIC —  
WORKWEAR  
PROFESSIONALS

Infinity  
by CHEROKEE®  
UNIFORMS

iflex®  
by CHEROKEE®  
UNIFORMS

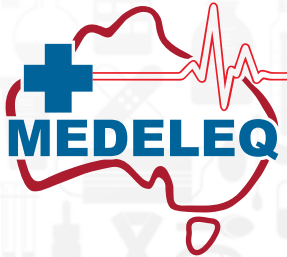
CHEROKEE®  
— BRAND —  
LAB COATS

CHEROKEE®  
— MEDICAL —  
PRINTS

Tooniforms®



CHEROKEE®  
— MEDICAL —  
UNIFORMS





ULTRA  
SOFT



TWO-WAY  
STRETCH



EASY  
CARE



## SOFT AND SMOOTH

Made with super-comfy fabric that feels  
great against the skin

WOMEN'S TOPS



**WW620** NEW COLOR  
**V-Neck Top**

XXS-5XL (27")

**Fabric**  
78 Poly/20 Rayon/  
2 Spandex Twill

**Product Details**

- Modern Classic fit
- Three pockets: patch pocket with instrument loop on left, double patch pocket on right
- Logo label with bungee loop
- Back princess seams
- Side vents

**Available Colors**



**New Color**

PKML\*  
\* XS-3XL



**WW610**  
**Mock Wrap Top**

XXS-5XL (26")

**Fabric**  
78 Poly/20 Rayon/  
2 Spandex Twill

**Product Details**

- Modern Classic fit
- Two patch pockets
- Hidden instrument loops
- Logo label with bungee loop
- Front and back princess seams
- Front shoulder yokes
- Side vents

**Available Colors**



**WW2875**  
**V-Neck Knit Panel Top**

XXS-5XL (24½")

**Fabric**  
78 Poly/20 Rayon/  
2 Spandex Twill

**Product Details**

- Modern Classic fit
- Kangaroo pocket
- Front and back yoke seams
- Black knit side panels (Navy knit side panels on Navy)

**Available Colors**



\* Navy side panels



**WW612P**  
**Petite V-Neck Top**

XXS-3XL (24")

**Fabric**  
78 Poly/20 Rayon/  
2 Spandex Twill

**Product Details**

- Modern Classic fit
- Two inset pockets
- Elastic instrument loops above right pocket
- Front and back princess seams
- Shirrtail hem

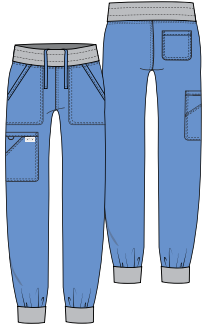
**Available Colors**



■ Fashion (available while supplies last)

**WOMEN'S PANTS**

**NEW**



**WW115/P/T**  
**Mid Rise Jogger**

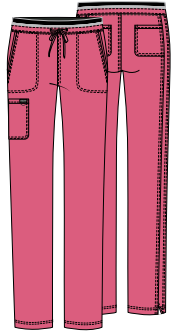
**XXS-5XL (28½")**  
**[P] XXS-2XL (26")**  
**[T] XS-2XL (31½")**

**Fabric**  
78 Poly/20 Rayon/  
2 Spandex Twill

**Product Details**

- Modern Classic fit
- Elastic-reinforced knit waistband with interior drawstring
- Five pockets: two front patch pockets, double cargo pocket, back patch pocket
- Knit cuffs
- Tapered leg, 9 ½" opening

**Available Colors**



**WW105/P/T** **NEW COLOR**  
**Mid Rise Drawstring Cargo Pant**

**XXS-5XL (31")**  
**[P] XXS-2XL (28½")**  
**[T] XS-2XL (34")**

**Fabric**  
78 Poly/20 Rayon/  
2 Spandex Twill

**Product Details**

- Modern Classic fit
- Five pockets: two front pockets, cargo pocket, two back pockets
- Logo label with bungee loop
- Elastic knit waistband
- Tapered leg, 15" opening

**Available Colors**

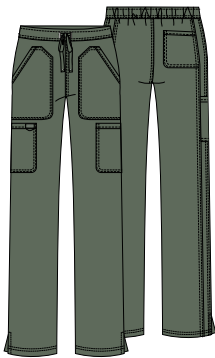


\* Pewter colorway has a Pewter waistband.  
\* Olive Branch colorway has a Black waistband.  
XS-3XL [P] XS-2XL No Tall.

**New Color**



\* XS-3XL [P] XS-2XL No Tall.



**WW120/P/T**  
**Mid Rise Drawstring Cargo Pant**

**XXS-5XL (31")**  
**[P] XXS-2XL (28½")**  
**[T] XS-2XL (34")**

**Fabric**  
78 Poly/20 Rayon/  
2 Spandex Twill

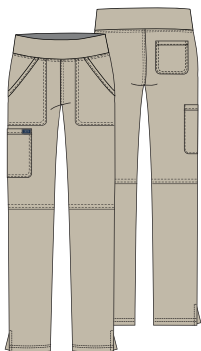
**Product Details**

- Modern Classic fit
- Front patch and cargo pockets
- Back pocket
- Back elastic waistband
- Logo label with bungee loop
- Side vents
- Moderate flare leg, 18½" opening

**Available Colors**



\* [P] XXS-3XL



**WW110/P/T**  
**Mid Rise Pull-on Cargo Pant**

**XXS-3XL (31")**  
**[P] XXS-2XL (28½")**  
**[T] XS-2XL (34")**

**Fabric**  
78 Poly/20 Rayon/  
2 Spandex Twill

**Product Details**

- Modern Classic fit
- Elastic-reinforced knit waistband
- Four pockets: front patch pockets, cargo pocket and back pocket
- Logo label with bungee loop
- Side vents
- Straight leg, 18" opening

**Available Colors**



\* [P] XXS-3XL



**WW670**  
**Men's V-Neck Top**  
XS-5XL (29")

**Fabric**  
78 Poly/20 Rayon/  
2 Spandex Twill

**Product Details**

- Men's Modern fit
- Chest pocket with pen slot
- Two patch pockets
- Logo label with bungee loop
- Back yoke
- Side vents

**Available Colors**



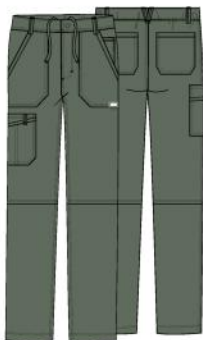
**WW690**  
**Men's V-Neck Top**  
XS-5XL (29")

**Fabric**  
78 Poly/20 Rayon/  
2 Spandex Twill

**Product Details**

- Men's Modern fit
- Chest pocket with pen slot
- Logo label with bungee loop
- Locker loop
- Back yoke
- Side vents

**Available Colors**



**WW140/S/T**  
**Men's Fly Front Cargo Pant**  
XS-5XL (32")

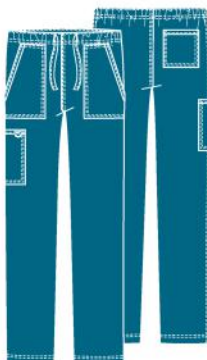
[S] XS-3XL (29½")  
[T] S-2XL (35")

**Fabric**  
78 Poly/20 Rayon/  
2 Spandex Twill

**Product Details**

- Men's Modern fit
- Seven pockets: double cargo pocket, patch pockets, back pockets, accessory pocket
- Back elastic waistband with inside drawstring
- Zip fly with button closure
- Five belt loops
- Logo label with bungee loop
- Tapered leg, 19" opening

**Available Colors**



**WW020/S/T**  
**Unisex Drawstring Cargo Pant**  
XXS-5XL (31")

[S] XXS-3XL (28½")  
[T] XS-2XL (34")

**Fabric**  
78 Poly/20 Rayon/  
2 Spandex Twill

**Product Details**

- Unisex fit
- Four pockets: patch pockets, cargo pocket, back pocket
- Elastic waistband with drawstring
- Bungee instrument loop
- Tapered leg, 16½" opening

**Available Colors**



Fashion (available while supplies last)



**ACTIVE STYLING**

# Ready for Action

Professional polish meets high-performance features for comfort, breathability, and ease of movement, no matter where your day takes you.



Model is wearing **WW61** V-Neck Top in Red (RED).



ULTRA SOFT



TWO-WAY STRETCH



EASY CARE

**WOMEN'S & MEN'S ACTIVE STYLES**



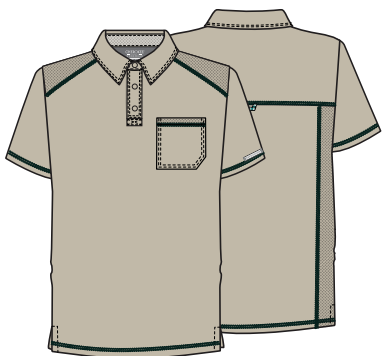
**WW601**  
**V-Neck Top**  
XXS-5XL (26")

**Fabric**  
78 Poly/20 Rayon/  
2 Spandex Twill

**Product Details**

- Modern Classic fit
- Two patch pockets
- Instrument loops in right pocket
- Mesh neckband and panels
- Front and back shoulder yokes
- Front vents
- Shirttail hem
- Reflective label and tape

**Available Colors**



**WW615**  
**Men's Polo Shirt**  
XS-5XL (28½")

**Fabric**  
78 Poly/20 Rayon/  
2 Spandex Twill

**Product Details**

- Men's Modern fit
- Chest pocket
- Mesh yoke and panels
- Locker loop
- Reflective label

**Available Colors**





# Comfort for Days

A super-soft cotton blend with a touch of spandex makes this fabric a favorite.

-  DURABLE
-  EXTRA SOFT
-  TWO-WAY STRETCH



Model is wearing **WW630** V-Neck Top in Caribbean Blue (CARW).

**WOMEN'S TOPS**



**4727**  
**V-Neck Top**  
XXS-5XL (27")

**Fabric**  
55 Cotton/42 Poly/  
3 Spandex Twill

**Product Details**

- Modern Classic fit
- Crossover front yoke
- Three pockets: two patch pockets, sectional pocket with ID badge loop on right
- Back yoke and princess seams
- Side vents

**Available Colors**



**4728**  
**Mock Wrap Top**  
XXS-5XL (27")

**Fabric**  
55 Cotton/42 Poly/  
3 Spandex Twill

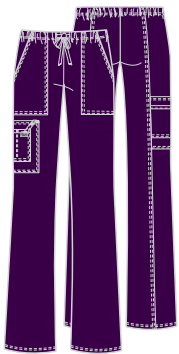
**Product Details**

- Modern Classic fit
- Three pockets: two patch pockets, sectional pocket with ID badge loop on right, instrument loops on left pocket
- Front and back princess seams
- Double-needle topstitching
- Side vents

**Available Colors**



**WOMEN'S PANTS**



**4044/P/T**  
**Mid Rise Drawstring Cargo Pant**

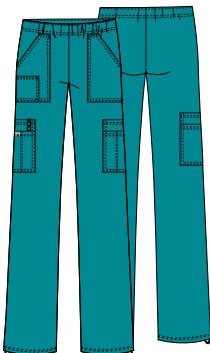
XXS-5XL (31")  
[P] XXS-2XL (28½")  
[T] XS-2XL (34")

**Fabric**  
55 Cotton/42 Poly/  
3 Spandex Twill

**Product Details**

- Modern Classic fit
- Elastic waistband with drawstring
- Four pockets: two front patch pockets, cargo pocket, sectional pocket on cargo pocket with ID badge loop
- Back leg seam
- Flare leg, 20½" leg opening

**Available Colors**



**4005/P/T**  
**Mid Rise Pull-on Cargo Pant**

XXS-5XL (31")  
[P] XXS-2XL (28½")  
[T] XS-2XL (34")

**Fabric**  
55 Cotton/42 Poly/  
3 Spandex Twill

**Product Details**

- Modern Classic fit
- Elastic waistband
- Seven pockets: two front patch pockets, small front right patch pocket, double cargo pockets
- ID badge loop and pen slot on right cargo pockets
- Adjustable bungee at leg opening
- Straight leg, 19½" opening

**Available Colors**



\* No Tall



UNISEX STYLES



4725  
Unisex V-Neck Top

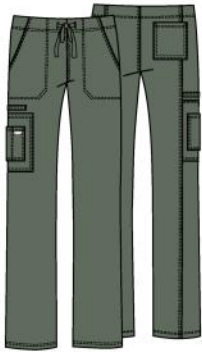
XS-5XL (28")

**Fabric**  
55 Cotton/42 Poly/  
3 Spandex Twill

**Product Details**

- Unisex Traditional fit
- Four pockets: chest pocket with instrument loops, two patch pockets with sectional pocket on right
- Back yoke
- Side vents

**Available Colors**



4043  
Unisex Drawstring Cargo Pant

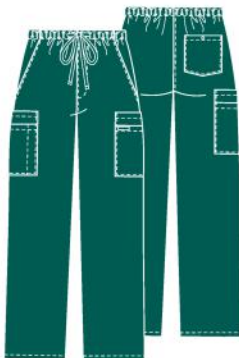
XS-5XL (31")

**Fabric**  
55 Cotton/42 Poly/  
3 Spandex Twill

**Product Details**

- Unisex Traditional fit
- Five pockets: two front pockets, cargo pocket with sectional pocket on right, back patch pocket
- Instrument loops above cargo pocket
- Straight leg, 20½" opening

**Available Colors**



4243  
Men's Fly Front Cargo Pant

XS-5XL (31")

**Fabric**  
55 Cotton/42 Poly/  
3 Spandex Twill

**Product Details**

- Men's Traditional fit
- Elastic waistband with drawstring
- Zip fly front closure
- Seven pockets: two front pockets, double cargo pockets, back pocket with button closure
- Tapered leg, 18" opening

**Available Colors**



MEN'S STYLES

Fashion (available while supplies last)



# Radiate Confidence

Show up and shine in polished styles designed with your comfort in mind.



DURABLE

Featuring **WW605** Unisex Pocketless V-Neck Top in Olive (OLV) and Black (BLK).

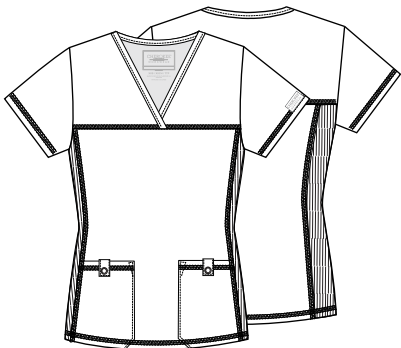


TWO-WAY STRETCH



EASY CARE

## WOMEN'S STYLES



### WW2968 V-Neck Knit Panel Top

XXS-5XL (26")

**Fabric**  
63 Poly/34 Cotton/  
3 Spandex Poplin

#### Product Details

- Modern Classic fit
- Two patch pockets with snap tabs
- Front and back yoke seams
- Tonal knit side panels

#### Available Colors



### WW665 V-Neck Top

XXS-5XL (26")

**Fabric**  
63 Poly/34 Cotton/  
3 Spandex Poplin

#### Product Details

- Modern Classic fit
- Three pockets: right patch pocket with interior cellphone pocket, left pocket with pen slot and instrument loop
- Back yoke
- Shirttail hem
- Side vents

#### Available Colors





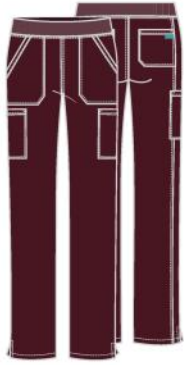
**WW655**  
**Mock Wrap Top**  
 XXS-5XL (27")

**Fabric**  
 63 Poly/34 Cotton/  
 3 Spandex Poplin

**Product Details**

- Modern Classic fit
- Three pockets: right patch pocket with interior cellphone pocket, left pocket with pen slot and instrument loop
- Back yoke
- Side vents

**Available Colors**



**WW170/P/T**  
**Mid Rise Pull-on Cargo Pant**  
 XXS-5XL (31")

[P] XXS-2XL (28½")  
 [T] XS-2XL (34")

**Fabric**  
 63 Poly/34 Cotton/  
 3 Spandex Poplin

**Product Details**

- Modern Classic fit
- Elastic-reinforced rib-knit waistband
- Six pockets: front patch pockets, cargo pockets, back pockets
- Side vents
- Straight leg, 17½" opening

**Available Colors**



**UNISEX TOPS**

**Available Colors**



**WW605**  
**Unisex Pocketless V-Neck Top**  
 XXS-5XL (27½")

**Fabric**  
 63 Poly/34 Cotton/  
 3 Spandex Poplin

**Product Details**

- Unisex Modern fit
- Instrument loops on left sleeve
- Back yoke
- Side vents

**MEN'S STYLES**

**Available Colors**



\* No Tall



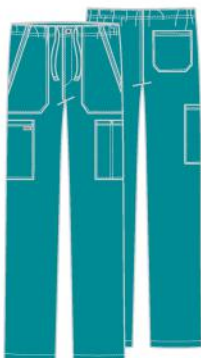
**WW695/T**  
**Men's V-Neck Top**  
 XS-5XL (29")

[T] XS-5XL (32")

**Fabric**  
 63 Poly/34 Cotton/  
 3 Spandex Poplin

**Product Details**

- Men's fit
- Four pockets: chest pocket, patch pockets, right cellphone pocket
- Hidden left instrument loops
- Back yoke
- Side vents



**WW190/S/T**  
**Men's Fly Front Cargo Pant**  
 XS-5XL (32")

[S] XS-3XL (29½")  
 [T] S-2XL (35")

**Fabric**  
 63 Poly/34 Cotton/  
 3 Spandex Poplin

**Product Details**

- Men's fit
- Elastic waistband with drawstring
- Zip fly with button closure
- Five pockets: front patch pockets, cargo pockets, back pocket
- Pen stitch on left cargo pocket
- Tapered leg, 18½" opening

**Available Colors**



Fashion (available while supplies last)



Model is wearing **WW645** V-Neck Top in Navy (NAV).

# True Classics

The collection that made Cherokee famous, with comfort, strength, and style for miles.



DURABLE



EASY CARE

Model is wearing **WW645** V-Neck Top in Navy (NAVW).

## WOMEN'S STYLES



### WW645 V-Neck Top

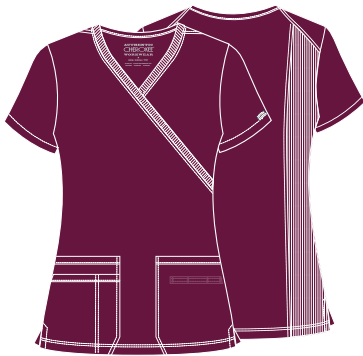
XXS-5XL (27")

**Fabric**  
65 Poly/35 Cotton Poplin w/Soil Release  
White: 55 Cotton/45 Poly Poplin

#### Product Details

- Contemporary fit
- Right pocket with exterior pocket and pen slot
- Left pocket with hidden instrument loops
- Rib-knit back panels
- Side vents

#### Available Colors



### WW650 Mock Wrap Top

XXS-5XL (26")

**Fabric**  
65 Poly/35 Cotton Poplin w/Soil Release  
White: 55 Cotton/45 Poly Poplin

#### Product Details

- Contemporary fit
- Right pocket with exterior pocket and pen slot
- Left pocket with hidden instrument loops
- Rib-knit back side panels
- Side vents

#### Available Colors





**4770**  
**Snap Front V-Neck Top**

**XXS-5XL (26½")**

**Fabric**  
65 Poly/35 Cotton  
Poplin w/Soil Release  
White: 55 Cotton/  
45 Poly Poplin

**Product Details**

- Traditional Classic fit
- Snap front closure
- Two patch pockets
- Cellphone pocket
- Side vents

**Available Colors**



**4700**  
**V-Neck Top**

**XXS-5XL (26½")**

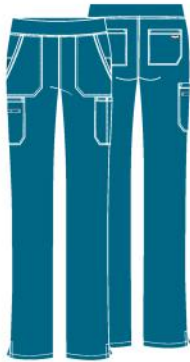
*Black comes in 6XL*

**Fabric**  
65 Poly/35 Cotton  
Poplin w/Soil Release  
White: 55 Cotton/  
45 Poly Poplin

**Product Details**

- Traditional Classic fit
- Two patch pockets
- Cellphone pocket
- Short dolman sleeves
- Side vents

**Available Colors**



**WW210/P/T**  
**Mid Rise Pull-on Cargo Pant**

**XXS-5XL (31")**  
**[P] XXS-2XL (28½")**  
**[T] XS-2XL (34")**

**Fabric**  
65 Poly/35 Cotton  
Poplin w/Soil Release  
White: 55 Cotton/  
45 Poly Poplin

**Product Details**

- Contemporary fit
- Elastic-reinforced rib-knit waistband
- Front sag-proof expandable patch pockets
- Cargo and back pockets
- Hidden instrument loops
- Side vents
- Straight leg, 17½" opening

**WOMEN'S PANTS**

**Available Colors**



**4020/P/T**  
**Drawstring Cargo Pant**

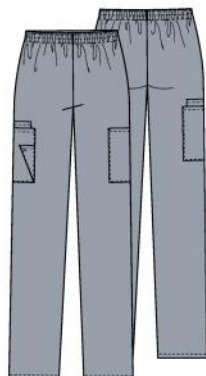
**XXS-3XL (31")**  
**[P] XXS-XL (28½")**  
**[T] XS-XL (34")**

**Fabric**  
65 Poly/35 Cotton  
Poplin w/Soil Release  
White: 55 Cotton/  
45 Poly Poplin

**Product Details**

- Modern Classic fit
- Lower rise
- Elastic waistband with webbed drawstring
- Five belt loops
- Front pockets with left D-ring
- Right cargo pocket with scissors pocket
- Double-needle topstitching
- Straight leg, 19½" opening

**Available Colors**



**4200/P/T**  
**Natural Rise Pull-on Cargo Pant**

**XS-5XL (30")**  
**[P] XS-3XL (27½")**  
**[T] XS-2XL (33")**

**Fabric**  
65 Poly/35 Cotton  
Poplin w/Soil Release  
White: 55 Cotton/  
45 Poly Poplin

**Product Details**

- Traditional Classic fit
- Elastic waistband
- Two cargo pockets
- Cellphone pocket
- Scissors pocket
- Tapered leg, 15" opening

**Available Colors**



\*No Tall \*No Short or Tall

Fashion (available while supplies last)

**UNISEX STYLES**



**4876**  
**Unisex V-Neck Top**

**XXS-5XL (29")**

**Fabric**  
65 Poly/35 Cotton  
Poplin w/Soil Release  
White: 55 Cotton/  
45 Poly Poplin

**Product Details**

- Unisex fit
- Chest pocket
- Two patch pockets
- Side vents

**Available Colors**



**4777**  
**Unisex V-Neck Tunic**

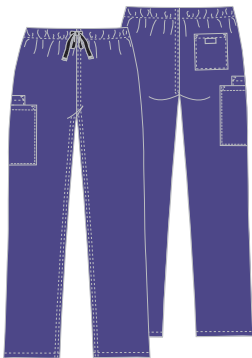
**XXS-5XL (27½")**

**Fabric**  
65 Poly/35 Cotton  
Poplin w/Soil Release  
White: 55 Cotton/  
45 Poly Poplin

**Product Details**

- Unisex fit
- Chest pocket with pen slot
- Dolman sleeves

**Available Colors**



**4100/S/T**  
**Unisex Drawstring Cargo Pant**

**XXS-5XL (31")**  
**[S] XXS-3XL (28½")**  
**[T] S-2XL (34")**

**Fabric**  
65 Poly/35 Cotton  
Poplin w/Soil Release  
White: 55 Cotton/  
45 Poly Poplin

**Product Details**

- Unisex fit
- Webbed drawstring
- Cargo pocket with inside cellphone pocket
- Back pocket
- Straight leg, 18½" opening

**Available Colors**



\* No Short or Tall

**MEN'S PANTS**



**4000/S/T**  
**Men's Fly Front Cargo Pant**

**S-5XL (31")**  
**[S] S-3XL (28½")**  
**[T] S-2XL (36" unhemmed)**

**Fabric**  
65 Poly/35 Cotton  
Poplin w/Soil Release  
White: 55 Cotton/  
45 Poly Poplin

**Product Details**

- Men's fit
- Elastic waistband with webbed drawstring
- Zip fly front closure
- Seven pockets: front pockets, double cargo pockets, back pocket
- Tapered leg, 18" opening

**Available Colors**



\*No Short \*No Short or Tall

# JOGGER PANTS & POLOS

Practical solutions to compliment your everyday wardrobe.



## WW698 Snap Front Polo Shirt

XXS-5XL (24")

**Fabric**  
78 Poly/20 Rayon/  
2 Spandex Twill

### Available Colors



### Product Details

- Modern Classic fit
- Snap front closure
- Welt chest pocket
- Mesh side panels
- Reflective label
- Side vents



## WW622 Snap Front V-Neck Top

XXS-5XL (26")

**Fabric**  
78 Poly/20 Rayon/  
2 Spandex Twill

### Available Colors



### Product Details

- Modern Classic fit
- Knit inset at neckline
- Four pockets: two front top-entry patch pockets, two side angle-entry pockets
- Logo label with bungee loop
- Front yoke seams
- Bust darts
- Back princess seams
- Side vents



## WW615 Men's Polo Shirt

XS-5XL (28½")

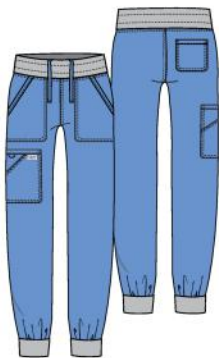
**Fabric**  
78 Poly/20 Rayon/  
2 Spandex Twill

### Available Colors



### Product Details

- Men's Modern fit
- Chest pocket
- Mesh yoke and panels
- Locker loop
- Reflective label



### Available Colors



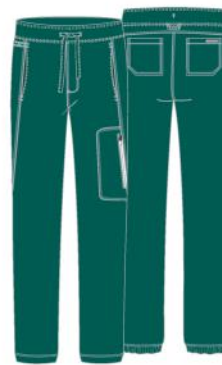
## WW115/P/T Mid Rise Jogger

XXS-5XL (28½")  
[P] XXS-2XL (26")  
[T] XS-2XL (31½")

**Fabric**  
78 Poly/20 Rayon/  
2 Spandex Twill

### Product Details

- Modern Classic fit
- Elastic-reinforced knit waistband with interior drawstring
- Five pockets: two front patch pockets, double cargo pocket, back patch pocket
- Knit cuffs
- Tapered leg, 9 ½" opening



### Available Colors



## WW012/S/T Men's Jogger

XS-5XL (31")  
[S] XS-3XL (28½")  
[T] S-2XL (34")

**Fabric**  
78 Poly/20 Rayon/  
2 Spandex Twill

### Product Details

- Men's fit
- Elastic waistband with drawstring
- Five pockets: two front pockets, side seam zip pocket, two back pockets
- Instrument and locker loops
- Stylized hem
- Reflective label and tape
- Straight leg, 12" opening

## For Healthcare Pros in Motion

The uniform of choice for one of the world's most athletic professions.



**FOUR-WAY  
STRETCH**



**CERTAINTY®  
TECHNOLOGIES**



**MOISTURE  
WICKING**

Featuring 2624A Round Neck Top in Rooftop Red (FIHY) and 2391A Zip Front Jacket in White (WHT).



### WOMEN'S TOPS



#### 2624A **NEW COLOR**

### Round Neck Top

XXS-5XL (26")

**Fabric**  
95 Poly/  
5 Spandex Poplin

#### FHRS and SHTH

95 Poly/  
5 Spandex  
Heathered Poplin

#### Product Details

- Contemporary fit
- Three pockets: two patch pockets, interior pocket
- Rib-knit inset at front neckband and back panel
- Shoulder yokes
- Bungee ID badge loop
- Side vents

#### Available Colors



\*XS-3XL

#### New Colors



#### 2625A

### Mock Wrap Top

XXS-5XL (26")

**Fabric**  
95 Poly/  
5 Spandex Poplin

#### Product Details

- Contemporary fit
- Four pockets: two set-in pockets, interior pocket, utility pocket
- Logo O-ring
- Front and back princess seams
- Rib-knit back panel
- Side vents

#### Available Colors





WOMEN'S PANTS



1123A/P/T  
**Drawstring Pant**

XXS-5XL (31")  
[P] XXS-2XL (28½")  
[T] XS-2XL (34")

**Fabric**  
95 Poly/  
5 Spandex Poplin

**Product Details**

- Contemporary fit
- Lower rise
- Four pockets: two angled front pockets, zip cargo pocket, back pocket
- Elastic-reinforced rib-knit waistband with drawstring
- Adjustable toggle hems
- Rib-knit front and back yokes
- Straight leg, 18" opening (18½" for tall)

**Available Colors**



CK065A/P/T  
**Mid Rise Pull-on Pant**

XXS-5XL (30½")  
[P] XXS-2XL (28")  
[T] XS-2XL (33½")

**Fabric**  
95 Poly/  
5 Spandex Poplin

**Product Details**

- Contemporary fit
- Elastic-reinforced rib-knit waistband
- Six pockets: two front welt pockets, two cargo pockets, two back pockets
- Front leg seams
- Side vents
- Tapered leg, 14" opening

**Available Colors**



MEN'S TOPS



CK900A  
**Men's V-Neck Top**

XS-5XL (29½")

**Fabric**  
95 Poly/  
5 Spandex Poplin Knit

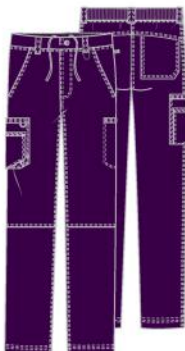
**Product Details**

- Men's Modern fit
- Three pockets: chest pocket with grommet detail, two welt pockets
- Rib-knit back side panels
- Front and back yokes

**Available Colors**



MEN'S PANTS



CK200A/S/T  
**Men's Fly Front Cargo Pant**

XS-5XL (32")  
[S] XS-3XL (29½")  
[T] S-2XL (35")

**Fabric**  
95 Poly/  
5 Spandex Poplin

**Product Details**

- Men's Modern fit
- Back rib-knit elastic waistband
- Zip fly with button closure and inside drawstring
- Six pockets: front pockets, welt cargo pocket on left, layered cargo pocket with bungee and grommet on right, back patch pocket
- Knee seams
- Five belt loops
- Tapered leg, 18" opening

**Available Colors**



Fashion (available while supplies last)

## Maximum Flexibility

Knit panels and superstretchy fabric make iFlex a perennial favorite.



FOUR-WAY  
STRETCH



MOISTURE  
WICKING



KNIT  
PANELS



Featuring **CK605** V-Neck  
Top in Spring Iris (SPIS).



**CK605** NEW COLOR  
**V-Neck Knit Panel Top**

XXS-5XL (26")

**Fabric**  
 94 Poly/6 Spandex  
 Crosshatch Dobby

**Product Details**

- Contemporary fit
- Four pockets: two front patch pockets, accessory pocket, back pocket
- Instrument loops
- Locker loop on back yoke
- Front shoulder yokes with ID badge loop
- Knit side panels and knit trim at V-neck
- Front and back princess seams

**Available Colors**



**New Color**

F SPIS\* with Pewter knit  
 \* XS-3XL



**CK680**  
**Mock Wrap Knit Panel Top**

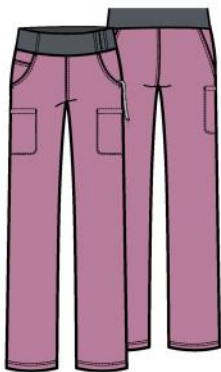
XXS-5XL (26")

**Fabric**  
 94 Poly/6 Spandex  
 Crosshatch Dobby

**Product Details**

- Contemporary fit
- Three pockets: two patch pockets, accessory pocket
- Front shoulder yokes
- Knit side panels and knit trim at neckline
- Bungee ID badge loop on neckline
- Side vents

**Available Colors**



**CK002/P/T** NEW COLOR  
**Mid Rise Pull-on Pant**

XXS-5XL (31")  
 [P] XXS-2XL (28½")  
 [T] XS-2XL (34")

**Fabric**  
 94 Poly/6 Spandex  
 Crosshatch Dobby

**Product Details**

- Contemporary fit
- Six pockets: two round pockets, two interior, two welt cargo pockets
- Knit waistband with inside elastic, hidden pocket
- Logo tape with plastic key clasp inside left pocket
- Bungee cord at leg hem
- Straight leg, 17" opening

**Available Colors**



**New Color**

F SPIS\* with Pewter knit  
 \* XS-3XL, [P] XS-2XL, No Tall  
 † No Petite or Tall

MEN'S STYLES



**CK661**  
**Men's V-Neck Top**

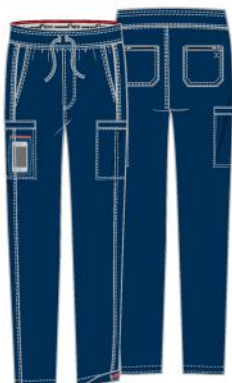
XXS-5XL (29½")

**Fabric**  
 94 Poly/6 Spandex  
 Crosshatch Dobby

**Product Details**

- Men's fit
- Tonal knit neckband
- Four pockets: welt chest pocket with reflective piping, two front patch pockets, hidden cellphone pocket
- Front and back shoulder yokes
- Tonal knit back side panels

**Available Colors**



**CK006/S/T**  
**Men's Drawstring Cargo Pant**

XXS-5XL (31½")  
 [S] XS-3XL (29")  
 [T] S-2XL (34½")

**Fabric**  
 94 Poly/6 Spandex  
 Crosshatch Dobby

**Product Details**

- Men's fit
- Knit waistband with interior logo elastic
- Seven pockets: two front pockets, two cargo pockets, hidden cellphone pocket, two zip back patch pockets
- Reflective piping along side seam
- Flat elastic inside hem for adjustability

**Available Colors**



F Fashion (available while supplies last)

Model is wearing **WW688** Maternity Mock Wrap Top and **WW155** Maternity Pull-on Pant in Royal (ROY).



Side zip gussets with mesh insets allow room to grow.

# MATERNITY



**WW685**  
**Maternity Mock Wrap Top**

**XXS-3XL (27½")**

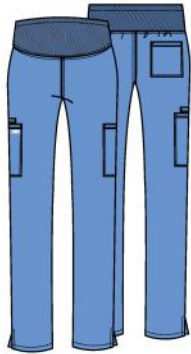
**Fabric**  
63 Poly/34 Cotton/  
3 Spandex Poplin

*Please order your  
pre-pregnancy size.*

**Product Details**

- Maternity fit
- Two patch pockets
- Right cellphone pocket
- Empire waist with side-tie drawstring
- Stretch rib-knit side panels

**Available Colors**



**WW220/P/T**  
**Maternity Pull-on Pant**

**XXS-3XL (31")**  
**[P] XS-2XL (28½")**  
**[T] XS-XL (34")**

**Fabric**  
63 Poly/34 Cotton/  
3 Spandex Poplin

*Please order your  
pre-pregnancy size.*

**Product Details**

- Maternity fit
- Stretch rib-knit panel waistband
- Two cargo pockets
- Cellphone pocket
- Back pocket
- Side vents
- Straight leg, 17" opening

**Available Colors**



**WW688**  
**Maternity Mock Wrap Top**

**XXS-3XL (27")**

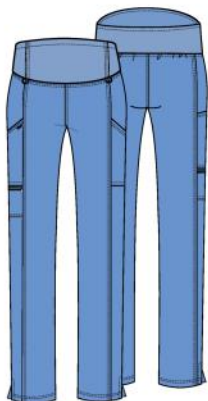
**Fabric**  
78 Poly/20 Rayon/  
2 Spandex Twill

*Please order your  
pre-pregnancy size.*

**Product Details**

- Maternity fit
- Two patch pockets
- Front shoulder yokes
- Front and back princess seams
- Soft knit front panels
- Side zip gussets with mesh insets allow room to grow

**Available Colors**



**WW155/P/T**  
**Maternity Pull-on Pant**

**XXS-3XL (30")**  
**[P] XS-2XL (27½")**  
**[T] S-XL (33")**

**Fabric**  
78 Poly/20 Rayon/  
2 Spandex Twill

*Please order your  
pre-pregnancy size.*

**Product Details**

- Maternity fit
- Soft knit waistband
- Three pockets: two cargo pockets, zip pocket on right
- Bungee loops at waist
- Side vents
- Slim straight leg, 15" opening

**Available Colors**



Fashion (available while supplies last)

## MEN'S JACKETS



### 4300 Men's Zip Front Jacket

S-5XL (30½")

**Fabric**  
65 Poly/35 Cotton  
Poplin w/Soil Release  
White: 55 Cotton/  
45 Poly Poplin

#### Product Details

- Men's fit
- Chest pocket
- Two patch pockets
- Notched lapel collar

#### Available Colors



### WW360 Men's Snap Front Jacket

XS-5XL (30")

**Fabric**  
63 Poly/34 Cotton/  
3 Spandex Poplin

#### Product Details

- Men's fit
- Snap front closure
- Two patch pockets
- Right cellphone pocket
- Back yoke
- Rib-knit collar and cuffs

#### Available Colors



## WOMEN'S JACKETS



### 4315 Zip Front Jacket

XXS-5XL (27")

**Fabric**  
55 Cotton/42 Poly/  
3 Spandex Twill

#### Product Details

- Modern Classic fit
- Three pockets: two patch pockets, sectional pocket with ID badge loop on right
- Front shoulder yokes
- Back yoke and princess seams
- Knit cuffs

#### Available Colors



### WW310 Snap Front Jacket

XXS-5XL (27½")

**Fabric**  
78 Poly/20 Rayon/  
2 Spandex Twill

#### Product Details

- Modern Classic fit
- Two patch pockets and interior cellphone pocket
- Logo label with bungee loop
- Hidden instrument loop
- Front and back princess seams
- Back yoke
- Rib-knit cuffs

#### Available Colors



Fashion (available while supplies last)

## LAB COATS



346 (WHT)

Modern Classic

4-20

32"

55 Cotton / 45 Poly Poplin

Four outside, one inside

None



1462 (WHT)

Traditional Classic

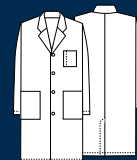
XS-5XL

32"

65 Poly / 35 Cotton Twill

Three outside

Half back, button



1346 (WHT)

Unisex

XS-5XL

40"

55 Cotton / 45 Poly Poplin

Three outside

None

STYLE CODE

FIT

SIZING

LENGTH

FABRICATION

POCKETS

BELT DETAIL

### Applause (ADPP)

95 Poly/5 Spandex



### Mickey (MKMK) R

100 Cotton



### Work Of Heart (WOHT)

91 Poly/9 Spandex Poplin



### Retro Buds (RTBD)

97 Cotton/3 Spandex Poplin

NEW



### Heartbeat (HRTB) R

Brushed 65 Poly/35 Cotton Poplin



### Coffee And My Dog (OGCD)

52 Recycled Poly/40 Poly/8 Spandex Poplin

NEW



R Reorderable print



### 2506 Solid Scrubs Hat

OS

**Fabric**  
65 Poly/35 Cotton  
Poplin w/Soil Release

#### Product Details

- Unisex fit
- Contoured seaming
- Interior terry cloth sweatband
- Back elastic and adjustable tie

#### Available Colors



### SUPPORT SOCKS

Cherokee offers gradient compression in a sock for men and women, with 3D Lycra for a more luxurious feel.

- Knee- 8-12 mmHg compression
- Gradient compression for extra comfort
- 90% textured nylon, 10% 3D Lycra
- One size fits shoe size 6-11
- Available in 26 colours



### 4881 Long Sleeve Underscrub Knit Tee

XS-2XL (26")

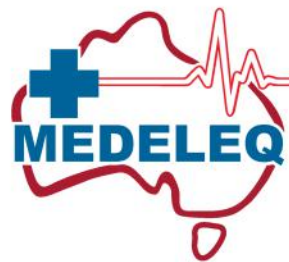
**Fabric**  
95 Rayon/  
5 Spandex Knit

#### Product Details

- Modern Classic fit
- Crew neck
- Wear layered or on its own

#### Available Colors





## **MEDELEQ AUSTRALIA**

**Office and Showroom:**  
23, 9-15 Sinclair Street  
Arundel Qld 4214

**P:** 07 5529 0753

**E:** [sales@medeleq.com.au](mailto:sales@medeleq.com.au)

**[www.medeleq.com.au](http://www.medeleq.com.au)**