

CHISON

Value Beyond Imaging



ECO1 VET

Premium Design, Surprising Price



WWW.CHISON.COM



Ultra - Light



12 inch rotatable LED monitor (0~30°)
adapt to different view angles



Vehicle Power Charger

ECO1 VET

Abdomen, Reproduction, Tendon etc.



One- key quick save

DICOM 3.0 (optional), USB



Anti-water keyboard cover (optional)



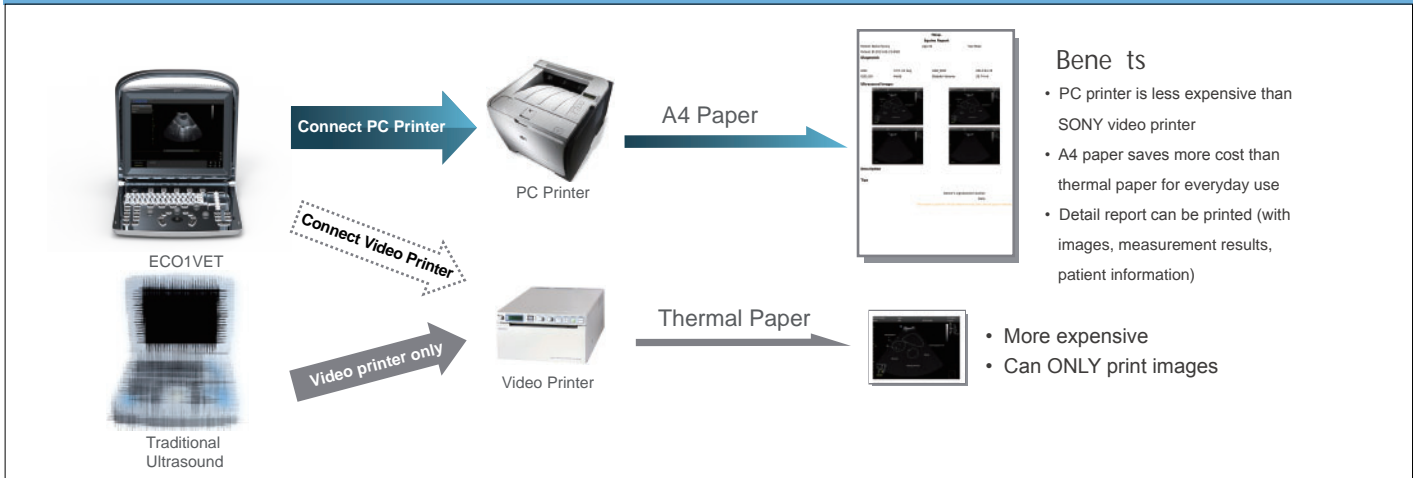
One key to **Full Screen**



Carry bag (BG-100) (optional)

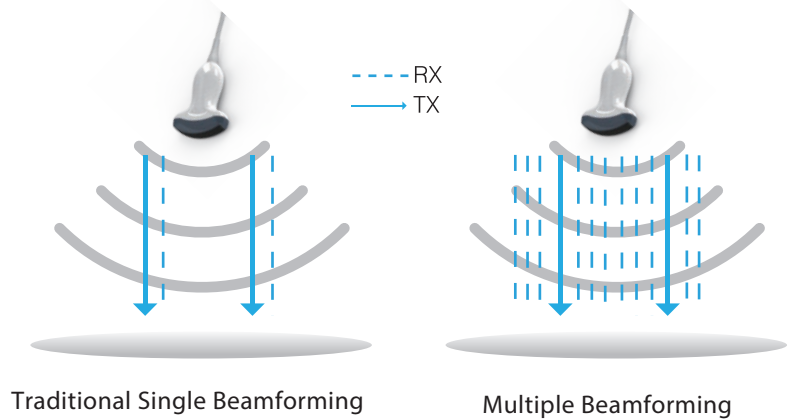


Support PC Printer

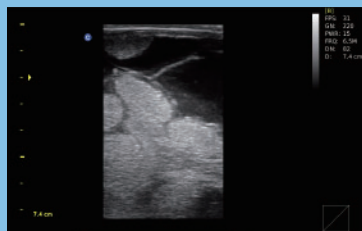


Multiple Beamforming Technology

- Enhance Frame Rate
- Improve Image Resolution



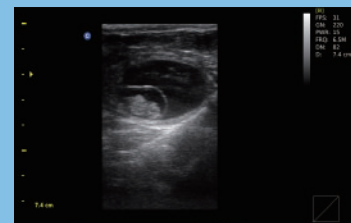
Excellent Image



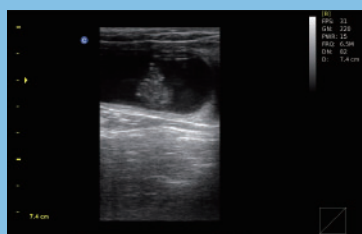
Late Pregnancy of Bovine



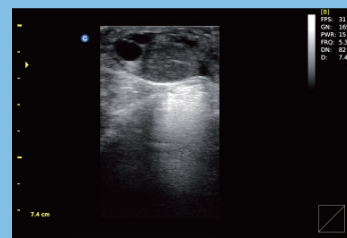
Canine Kidney



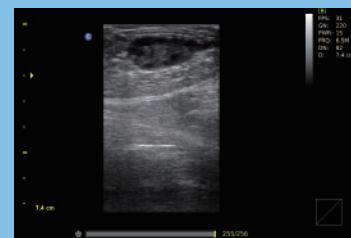
Bovine Pregnancy



Early Pregnancy of Bovine



Bovine Follicle



Bovine Ovary

Specifications

Applications	Large animal: Reproduction, Tendon.
	Small animal: Abdomen, Small parts, Basic cardiology.
Display Modes	B, B/B, 4B, M, B/M
Gray Scale	256 Levels
Probe Frequency	2.5MHz - 11MHz (Depend on the probe types)
No.of Probe Connectors	One connector (Standard)
Cine Loop	256 frames
Zoom	PIP zoom & pan zoom
Software Packages	Canine: GS, CRL, HD, BD
	Feline: HD, BD
	Equine: GS
	Bovine: BPD, CRL, Trunk Diameter
	Ovine: BPD, CRL, Trunk Diameter
General Measurements	B mode: distance, circumference, area, volume, ratio, angle, % stenosis, histogram, profile etc.
	M mode: distance, time, velocity, heart rate etc.
Archives Management	Patient information management, Patient images record, Patient exam report.
Power Supply	AC 240V-100V, 50Hz- 60Hz
Optional	2nd probe connector, Built-in Battery , DICOM 3.0, Anti-water keyboard cover, Carry Case (BG-100), Support PC Printer, TR 9000



5.0MHz - 10.0MHz Linear Rectal
L7-A



4.5-8.0 MHz Micro-Convex
MC6-A



5.3MHz-10.0MHz Linear
L7M-A



5.3MHz-11.0MHz Linear
L7S-A



5.0MHz-10.0MHz Trans-Rectal
R7-A



2.5MHz-5.0MHz Micro-Convex
MC3-A



4.0-7.0 MHz Micro-Convex
MC5V-A



2.5-5.0 MHz Convex
C3-A

CHISON Medical Technologies Co., Ltd.

Sales & Service Contact Address:

No.9, Xinhuihuan Road, Xinwu District, Wuxi, Jiangsu, China 214028

TEL : 0086-510-85310593 / 85310937

FAX : 0086-510-85310726

EMAIL : export@chison.com.cn

We reserve the right to make changes to this catalogue without prior notice. Please contact us or your local dealer for the latest information.

*Please refer to the user manual for details.

ECO1VET-030217