

ALL THE FUNCTIONALITIES YOU NEED IN ONE DEVICE

U-SCAN IS A COMPLETE AND RELIABLE SOLUTION FOR DENTAL IMAGING ENCLOSED IN A CLEAN AND ELEGANT DESIGN



Automatic phosphor plate recognition for streamlined operations and time saving for the practitioners



17 lp/mm resolution for an accurate and reliable diagnosis



4 different plate sizes for a wide range of use



Multi-user solution for an improved work efficiency and an enhanced productivity



Light and compact design for an easy integration in the dental office



Fast display time (11s for size 0) and automatic plate clearing at the end of the process

ACTEON SERVICE & YOU

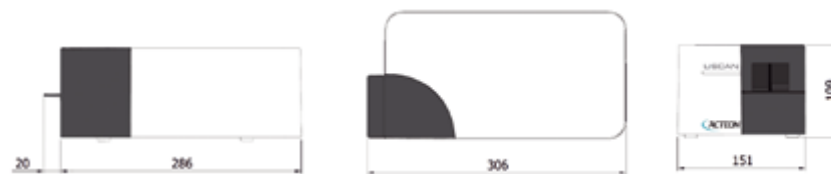
"Clinical trainers" are available to show you the clinical aspects and patient benefits of ACTEON® products and train you on how to use them.

Free, ongoing and unlimited service can be reached Monday to Friday, from 09:00 to 18:00.

ACTEON® can also analyse and troubleshoot remotely, and specialist technicians can provide on-site service as quickly as possible.

U-Scan is manufactured by de Götzen s.r.l and distributed by Acteon Group. The medical device U-Scan is a class IIa device according to the applicable European Directive. The device is CE marked by the Notified body: IMQ - CE 0051. This medical device for dental care is reserved for healthcare personnel; it is not covered by health insurance providers.

TECHNICAL SPECIFICATIONS



U-SCAN

GENERAL FEATURES

- Theoretical resolution..... 17 lp/mm
- Grey levels 16 bit
- Pixel size 30 µm
- Reading time 4.5 s (size 0), 9 s (size 2)
- Image display time..... 11 s (size 0), 14 s (size 2)
- PSP plate return time..... 18 s (size 0), 21 s (size 2)
- Plate processing Automatic process of plate size identification, reading and clearing
- Sensitivity adjustemnt Automatic setup of sensitivity on the required dose level
- Plate sizes Size 0 (22x31 mm - 726x1024 pixel)
..... Size 1 (24x40 mm - 792x1321 pixel)
..... Size 2 (31x41 mm - 1024x1352 pixel)
..... Size 3 (27x54 mm - 891x1783 pixel)
- Connection USB 2.0 or Ethernet, to be selected during the order

WORKSTATION CONFIGURATION

WINDOWS® MINIMUM CONFIGURATION REQUIRED

- Operating system Windows® 7
- Processor Quadcore 2.6 Ghz
- RAM 4 GB
- Hard disk 300 GB
- USB ports 2 USB 2.0 Hi-Speed ports
- Graphic card OpenGL 2.1 or better alternatively DirectX 9 or 11 Graphics Device
- USB Chipset Intel® or NEC® / RENESAS®
- Screen resolution 1600 x 1024
- Ethernet board 100 Mbps - 1Gbps

WINDOWS® RECOMMENDED CONFIGURATION REQUIRED

- Operating system Windows® 10
- Processor Quadcore 2.6 Ghz+
- RAM 8 GB
- Hard disk 1 TB
- USB ports 4 USB2 Hi-Speed ports
- Graphic card Delicated graphics card with at least 1 GiB memory
- USB Chipset Intel® or NEC® / RENESAS®
- Screen resolution 1920 x 1080 for optimal planning or better
- Ethernet board 1Gbps

MAC® MINIMUM CONFIGURATION REQUIRED

- Computer MacBook Pro 13.3" or iMac 21.5"
- Operating system 10.12 Sierra
- Processor Quadcore 2.6 Ghz
- RAM 4 GB
- Ethernet board 1 Gbps

MAC® RECOMMENDED CONFIGURATION REQUIRED

- Computer iMac 27"
- Operating system 10.14 Mojave
- Processor Quadcore 2.6 Ghz+
- RAM 8 GB
- Ethernet board 1 Gbps

For Yosemite and El Capitan operating systems, a Mac® computer from 2013 or later is request.

DE GOTZEN A company of ACTEON Group
Via Roma 45 | 21057 | Olgiate Olona (VA) | ITALY
Phone + 39 0331 376760 | Fax + 39 0331 376763
info@acteongroup.com | www.acteongroup.com

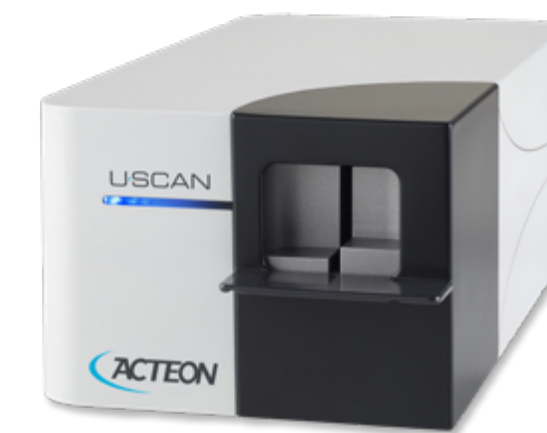
RCS Perie B 337 394 483 - 020540b

Non commercial document - Ref. 707241 A - 02/2020 - Copyright © 2020 ACTEON. All rights reserved. No information or any part of this document may be reproduced or transmitted in any form without the prior permission of ACTEON.

EN

IT'S TIME FOR EASY SCAN

U-SCAN



WIDE RANGE OF DENTAL APPLICATIONS

4 plate sizes are available to best suit all your clinical needs.



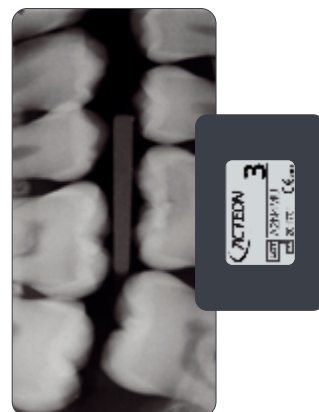
22x31 mm
Size 0
Child



24x40 mm
Size 1
Child / Adult, Periapical



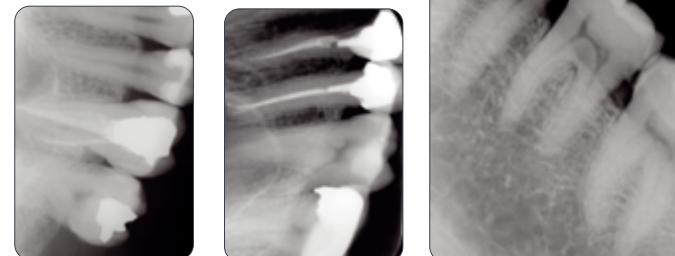
31x41 mm
Size 2
Adult, Bitewing / Periapical



27x54 mm
Size 3
Bitewing

ACCURATE IMAGES FOR PRECISE EXAMINATIONS

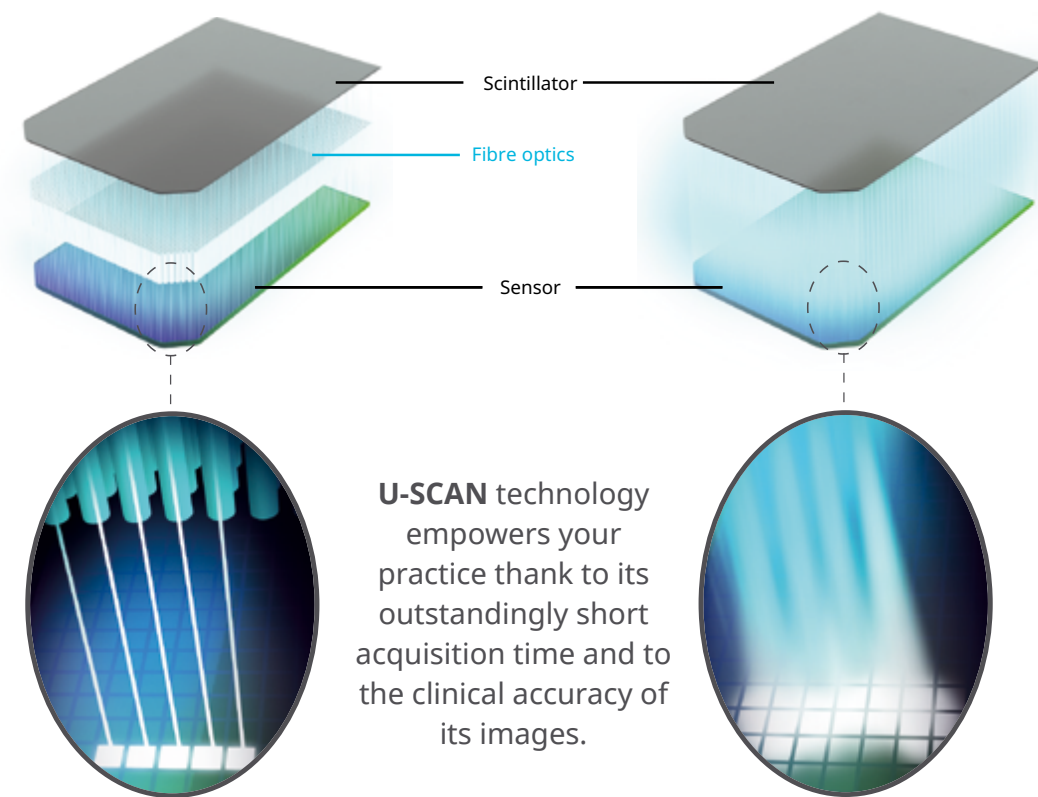
Detect also smallest details thanks to high image definition with 17 lp/mm resolution. U-SCAN provides **accurate images** and **striking contrast** to ensure a **reliable diagnosis**.



STRIKING CONTRAST FOR RELIABLE DIAGNOSIS

**2 FIBER
PIXEL**

U-SCAN uses optical microfiber technology which allows a guided transmission of the emitted photons, providing, thus, sharper and highly contrasted images.



U-SCAN technology empowers your practice thank to its outstandingly short acquisition time and to the clinical accuracy of its images.

FULLY AUTOMATED WORKFLOW FOR QUICK DIAGNOSIS



BLUE: unit connected



Yellow: unit initialising or scanning mode



Green: unit ready for acquisition

▶ U-SCAN automatically recognizes the size of the plate. After the quick scanning process your image is displayed on your screen and the plate is erased.

▶ A multi-color LED interface guides you through each step of the workflow.

MULTI-USER SOLUTION

U-SCAN is a multi-user solution, able to be shared among different rooms.



EXCEL IN YOUR ANALYSIS IN RECORD TIME

U-SCAN comes with Acteon imaging suite, a complete toolset for images acquisition and visualization, which offers all the patient management functionalities needed for a seamless integration of the device in your practice.



WINDOWS®
COMPATIBLE

*acquisition not possible with MAC - REMOVED

