

# C61

Handheld Computer

## Accessories Guide



### Standard

#### Adapter



PWR-C61-5V2A-CN



PWR-C61-5V2A-EU



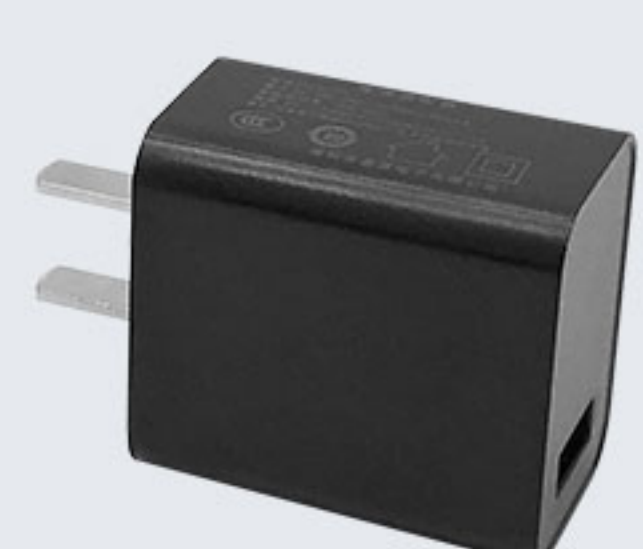
PWR-C61-5V2A-UK



PWR-C61-5V2A-US

Adapter(CN/EU/UK/US), I/P: 100-240V, O/P: 5V2A, use with DC-BK-TypeC cable

#### QC Adapter



PWR-18W-CN



PWR-18W-EU



PWR-18W-UK



PWR-18W-US

Quick Charge adapter(CN/EU/UK/US), I/P: 100-240V, O/P: 5V3A/12V1.5A/9V2A, use with DC-BK-TypeC cable

Comment: standard adaptor and QC adaptor are alternative.

#### USB Cable



**DC-BK-TypeC**

1.0 meter Type-C cable

#### Battery



**BTRY-C61-67MA**

6700mAh Li-Ion battery, 3.8V output

### Optional

#### Charging Cradles & Adapters



**CRD-C61-MBC**

Charging Cradle for main battery, up to 2 slots, use with DCP-WR-12V2A-XX adapter.



**CRD-C61-PBC**

Charging Cradle for pistol battery, up to 2 slots, use with DCP-WR-12V2A-XX adapter.



**CRD-C61-INS**



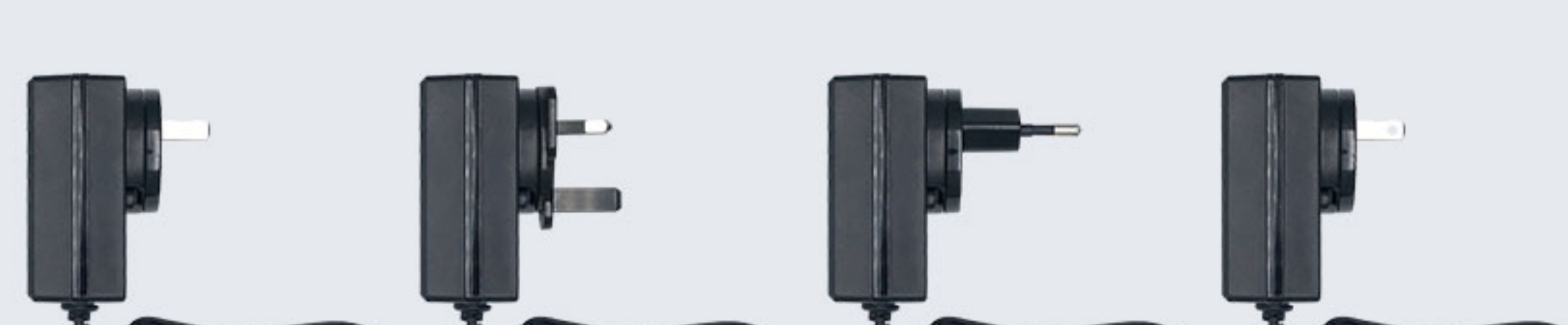
**CRD-C61-RBC**



**CRD-C61-RBCE**

**CRD-C61-RBC/CRD-C61-RBCE**

Charging Cradle for device, use with DCPWR-12V2A-XX adapter. CRD-C61-RBCE is an advanced CRD-C61-RBC, w/sync, w/ethernet, w/DC. The cradle cup has an insert that must be removed prior to inserting the C61 with Rugged Boot.



**CN**

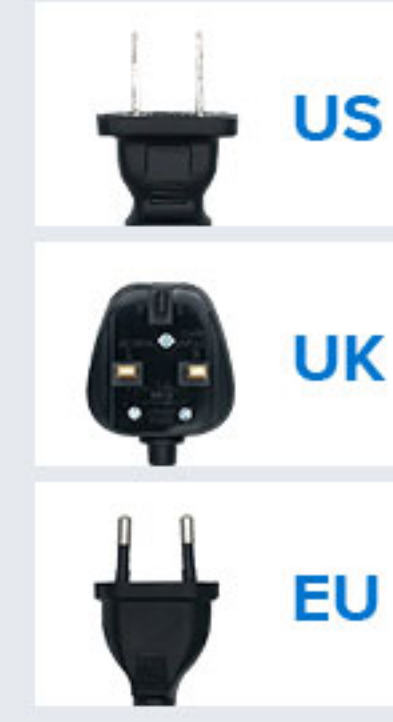
**UK**

**EU**

**US**

**DCPW-12V2A-XX**

Adapter(CN/EU/UK/US), I/P: 100-240V, O/P: 12V2A, DC



**CRD-MCB**

The base of 4-slots charging cradle set for 4 pieces of cradle, use with DCPWR-12V5A-XX adapter.

For load balance, recommendation:

1. 4 x cradle for device
2. 3 x cradle for device + 1 x cradle for main battery
3. 2 x cradle for device + 1 x cradle for main battery + 1 x cradle for pistol battery

#### Pistol Grip



**RB-C61-PS**

Snap-On Trigger Handle, use with optional pistol battery



**BTY-C61-PB**

Pistol battery, 5200mAh

#### Rugged Rubber Boot



**RB-C61-RR**

Rugged Rubber Boot, omni-directional hand protected. It can coexist with CRD-C61-RBC/CRD-C61-RBCE charging cradle.

#### Hand Strap



**RB-C61-HS**

hand strap

