



Contact us  
to arrange a demo

**ASTRIS  
PME**

[astris-pme.com.au](http://astris-pme.com.au)  
1300 131 884



**MAMALU™**  
special needs stroller



Modern and practical with unique design – **MAMALU™** is a special needs stroller created for the youngest users, which will work perfectly in all conditions. Its construction is based on a light and durable umbrella frame which means that it folds easily and quickly, and its small dimensions make it easy to transport after folding. **MAMALU™** grows together with your child due to the wide range of adjustments the stroller is equipped with. The headrest and the 5-point safety belts can be mounted at different heights, the seat has an adjustable depth and there are three levels of height adjustment of the footrest. Using the stroller is great pleasure. Independent shock absorbers and swivel PU wheels make the **MAMALU™** stroller extremely maneuverable. Comfort and convenience are provided by a reversible pad **COMFORT**, which is covered with soft, skin-friendly **MINKY** fabric on one side, and **FLEX** waterproof fabric on the other. Check the **MAMALU™** stroller during a walk and see that it is created for you and your child.

**MD** Wyrób Medyczny Klasy I  
Class I Medical Device



## IT IS RECOMMENDED FOR CHILDREN IN THE FOLLOWING CASES:

- Infantile cerebral palsy – different forms.
- Meningomyelocele.
- Brain and spinal cord injuries.
- Muscle diseases connected with paresis and paralysis.
- Genetic disorders connected with paresis.
- Other diseases connected with paresis, paralysis and injuries regarding locomotor system.
- After traumatic brain injury, spine with spinal cord and lower limbs injury.

## STANDARD EQUIPMENT:

Foldable umbrella frame with seat depth adjustment | Push handles | Front swivel PU wheels with direction blockade | Rear PU wheels with independent brakes | 5 point safety belts | Adjustable footrest | Carrying handle for a folded stroller



## ADVANTAGES:



### Stable structure

The device ensures adequate stability and safety of user.



### Reflective elements

The product has reflective elements to ensure your safety.



### Light weight

The product is made of light metal alloys which positively affects the low weight of the device.



### Easy-to-use

Intuitive way of adjustment and easy assembly.



### 24 months warranty

We offer 24 months warranty on the product. We also provide after sales service.



The umbrella frame of the stroller makes it fold easily and quickly, and its small dimensions make it easy to transport after folding.



Adjustable headrest, 5-point safety belts, footrest and seat depth make the stroller grow with your child.



MAMALU™ is extremely maneuverable due to independent shock absorbers and swivel PU wheels.



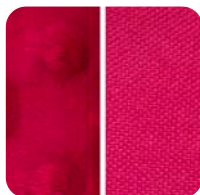
Reversible pad COMFORT – a combination of soft, skin-friendly MINKY fabric with waterproof upholstery.

## COLORS

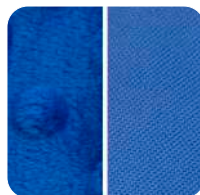
### REVERSIBLE COTTON-WASHABLE PAD COMFORT



Rose



Ruby\*



Ocean

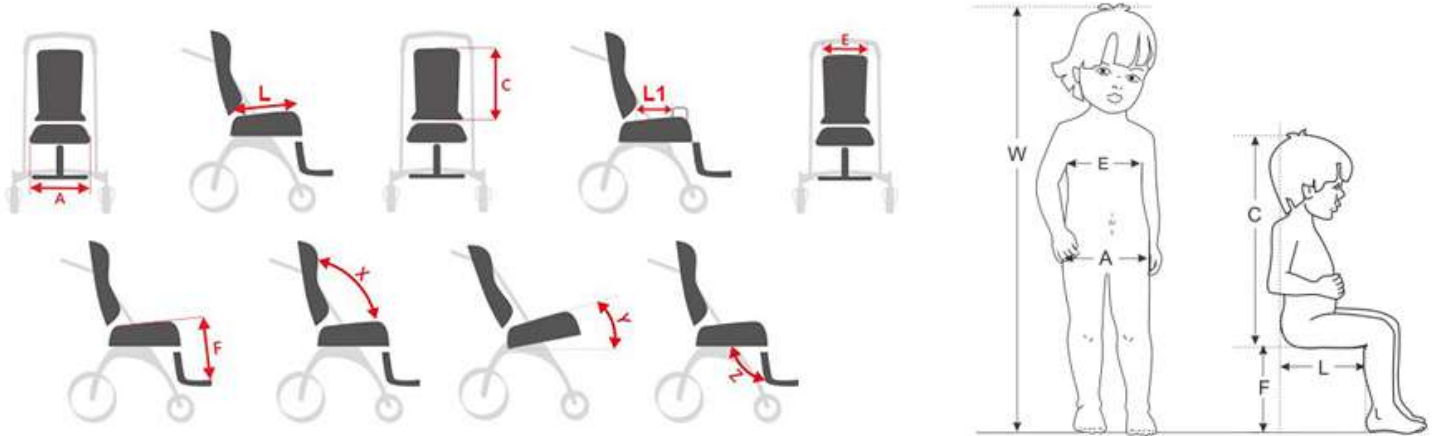


Space



Lava

\*Available until the stocks last.



Symbol	Measurement	Unit	Size 1
W	Indicative user height*	[cm]	90 - 130
A	seat width**	[cm]	32 - 38
L	seat depth	[cm]	22, 28
C <sub>1</sub>	backrest height	[cm]	60
C	headrest height	[cm]	40 - 55
E	backrest width**	[cm]	30 - 38
F	Footrest length	[cm]	18, 24, 35
	push handle height	[cm]	111
X	backrest tilt angle (relative to the seat)	[°]	95
Y	seat tilt angle	[°]	25
	maximum user weight	[kg]	35

**Note:** Measurement tolerance range is +/- 1 cm / ½ in.  
\*Height cannot be the main parameter while choosing the product size.

	Unit	Size 1
width	[cm]	55
width after folding	[cm]	28
length	[cm]	102
length after folding	[cm]	130
height	[cm]	111
height after folding	[cm]	33
weight	[kg]	10,8

**Note:** Measurement tolerance range is +/- 1 cm / ½ in.



**Safety**



**MML\_001 LED lights**  
Front and rear LED lights for increased safety.



**MML\_013 Safety rail**  
Makes the user safe in the stroller. Protects against falling out.



**Positioning**



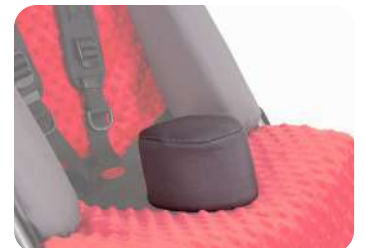
**MML\_101 Leg abduction belts**  
They can be easily attached to the chair by use of Velcro straps. Their use allows to keep legs in abduction and also prevents the patient from slipping off of the device.



**MML\_104 Adjustable headrest**  
Adjustable height and proper shape of the headrest guarantee a perfect adjustment to the user's needs.



**MML\_114 H Harness**  
It acts as a trunk stabilizer. HOLD&PULL™ system makes it easier to adjust the vest to the patient body. You can quickly detach the vest if necessary.



**MML\_128 Abduction block**  
They provide additional side support of the trunk. Also, they protect the user against the contact with the stroller frame.



**MML\_130 4 points safety vest**  
Acts as a trunk stabilizer. Wide range of adjustment helps to fit it to the user's needs. Equipped with HOLD&PULL™ system.



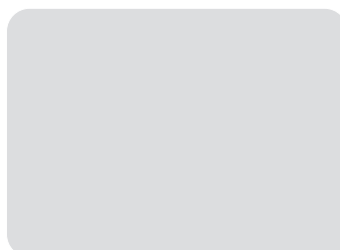
**MML\_148 High lateral supports**  
They provide additional side support of the trunk. Also, they protect the user against the contact with the stroller frame.



**MML\_161 Foot and ankle stabilizing sandals**  
They protect and stabilize the ankle joint. They are made of elastic material, recommended for users with increased muscle tone. They can be used with or without shoes.



**MML\_162 Dynamic ankle supports straps (FP-22)**  
Dynamic FlexPoint® ankle stabilizers provide great support when stabilizing the user's feet. Incorrect positioning of the feet, despite appropriate stabilization of the pelvis and chest, makes it impossible to keep the correct sitting position.



**MML\_163 Anatomic Leg abduction belts (FP-23)**  
The anatomical shape of the belts guarantees a better fit to the user's body, at the same time improving the user's comfort and safety. The belts make it easier to keep the lower limbs abducted and prevent the user from sliding out of the seat.



Comfort



**MML\_402 Umbrella**  
Attachable to the stroller's frame, perfectly protects from the sunlight or rain.



**MML\_403 Tray**  
ABS thermoformable tray, perfect for recreation and during rehabilitation. It is also ideal for work and having meals.



**MML\_405 Folding canopy**  
Protects against both sun and rain.



**MML\_408 Rain cover**  
An excellent protection from the rain, snow, and wind either for the user and stroller.



**MML\_409 Mosquito net**  
Excellent protection against insects.



**MML\_411 Cup holder**  
An universal holder mounted to the frame. It enables easy and quick access to a bottle of drink.



**MML\_417 Winter footmuff with muffs**  
Warmly lined footmuff protects the child from cold during winter walks and gives the user the freedom of movement. The zipper allows you to quickly unfasten the footmuff, making it easier to place the user in it. The footmuff has a hole for 5-point belts.



**MML\_445 Footmuff**  
Protects legs and trunk. It is a convenient body cover, adjusted to the user's height, which also covers the footrest of the stroller.



**MML\_447 Winter muffs**  
Comfortable and warm muffs protect your hands against a chill during walks.



**MML\_448 Self-leveling tray**  
A Self-leveling tray is a multifunctional and portable tray. A special bag filled with granules makes it possible to stably place it on your knees or on other uneven surfaces.



**MML\_449 Reversible cotton-washable pad COMFORT**



**MML\_451 Cover for high lateral supports**  
Colors available: ROSE, SPACE, LAVA, RUBY and OCEAN.



Storage



**MML\_501 Bag**  
Large, durable and stylish bag useful for carrying necessary things. Made from high-quality materials.



**MML\_505 Under seat storage basket**  
Enables you to carry small objects while you stroll. It is attached to the base of the stroller.



**MML\_506 Carrier bag for the stroller**  
An excellent solution to protect the folded stroller from damages (e.g. during the transportation). It perfectly fits the stroller shape and dimensions.



**MML\_509 Organizer**  
A handy bag attached to the push handle. Specially designed compartments and pockets make it easy to keep order and have all the necessary items at hand. The organizer bag has two useful holes for a cup or a bottle of water.