

Model 2810-2815

# Ceiling motor

Ideal for independent use



- Independent transfer possible with Handi-Move® Body Support
- Accommodates conventional slings
- Motor and rail systems make it possible to access all areas
- Automatic stop at any desired spot
- Sideways movement with adjustable speed
- Wireless control optional
- Back-up control on motor
- Mechanical emergency down feature that can be enabled by the user

Lift & Care systems for people with reduced mobility

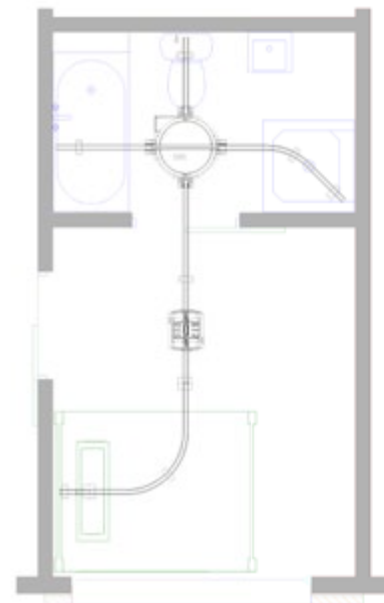
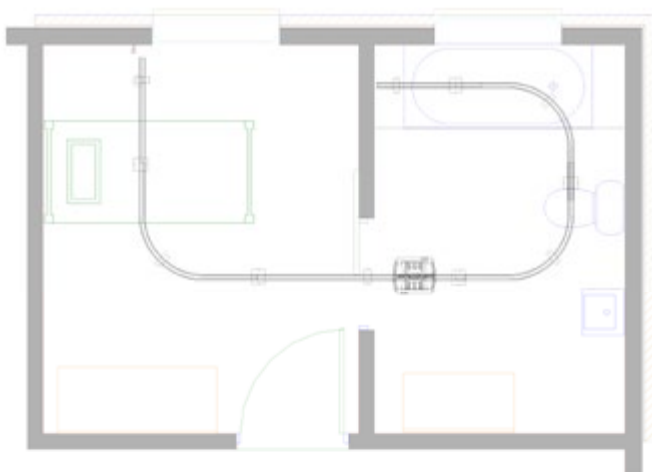
[www.handimove.com](http://www.handimove.com)

# Ceiling motor

## ● Technical specifications

Safe working load .....	200 kg (3000 mm motorband: 160 kg)
Batteries .....	2 x 12 V 9.5 Ah/ rechargeable
Standard motor band length .....	2000 mm (option:3000 mm)
Rail System .....	aluminium, lacquered in white
Smooth stop and go .....	electronic
Cover .....	ABS
Emergency down .....	mechanical
Handcontrol 2810 .....	watertight IP67 electric
Handcontrol 2815 .....	infra-red
Number of lifts with fully charged batteries .....	160
Load and battery indications .....	visual and auditive
Charger .....	input 0.9 A 100-240 Vac,50-60 Hz Class II
.....	output 24 Vdc Max 1.3 A (9940) Max 1.2 A (2541)

## ● Examples of routes



## ● Versions

### 2810 L

Lifting motor (up / down) and lateral motor (left/right)  
With electric handcontrol

### 2815 L IR

Lifting motor (up / down) and lateral motor (left/right)  
With infra-red remote control

For free demonstration or further information

