



**SPECIALIST
MACHINERY
SALES**

AUSTRALIA, NEW ZEALAND & SE ASIA

THOUGHT-LEADER IN STEEL PROCESSING AUTOMATION

REFERENCES FOR BLASTING AND PAINTING PROJECTS



1300 262 123 / +61 8 6500 6880



**tellmemore@smsales.com.au
www.SMSales.com.au**





**SPECIALIST
MACHINERY
SALES** AUSTRALIA, NEW ZEALAND & SE ASIA

SLF COMBINED BLASTING AND PAINTING SYSTEMS

SLF's combined blasting and painting systems integrate advanced technology to deliver exceptional performance in surface preparation and finishing. These systems are designed to handle both large-scale industrial projects and intricate components, providing unmatched efficiency and quality.

By combining blasting and painting in a single, streamlined process, SLF systems significantly reduce downtime and increase productivity. The precision of our blasting technology ensures optimal surface preparation, while our state-of-the-art painting systems deliver a flawless finish. This integrated approach guarantees consistent, high-quality results, enhancing operational efficiency and ensuring that projects are completed to the highest standards.

For more information and to see our systems in action, check below for reference projects.





**SPECIALIST
MACHINERY
SALES** AUSTRALIA, NEW ZEALAND & SE ASIA





OPEN-SPACE PAINT SPRAYING SYSTEM WITH TELESCOPIC DRYER AND BLASTROOM

Industry Sector

Steel construction

Work piece

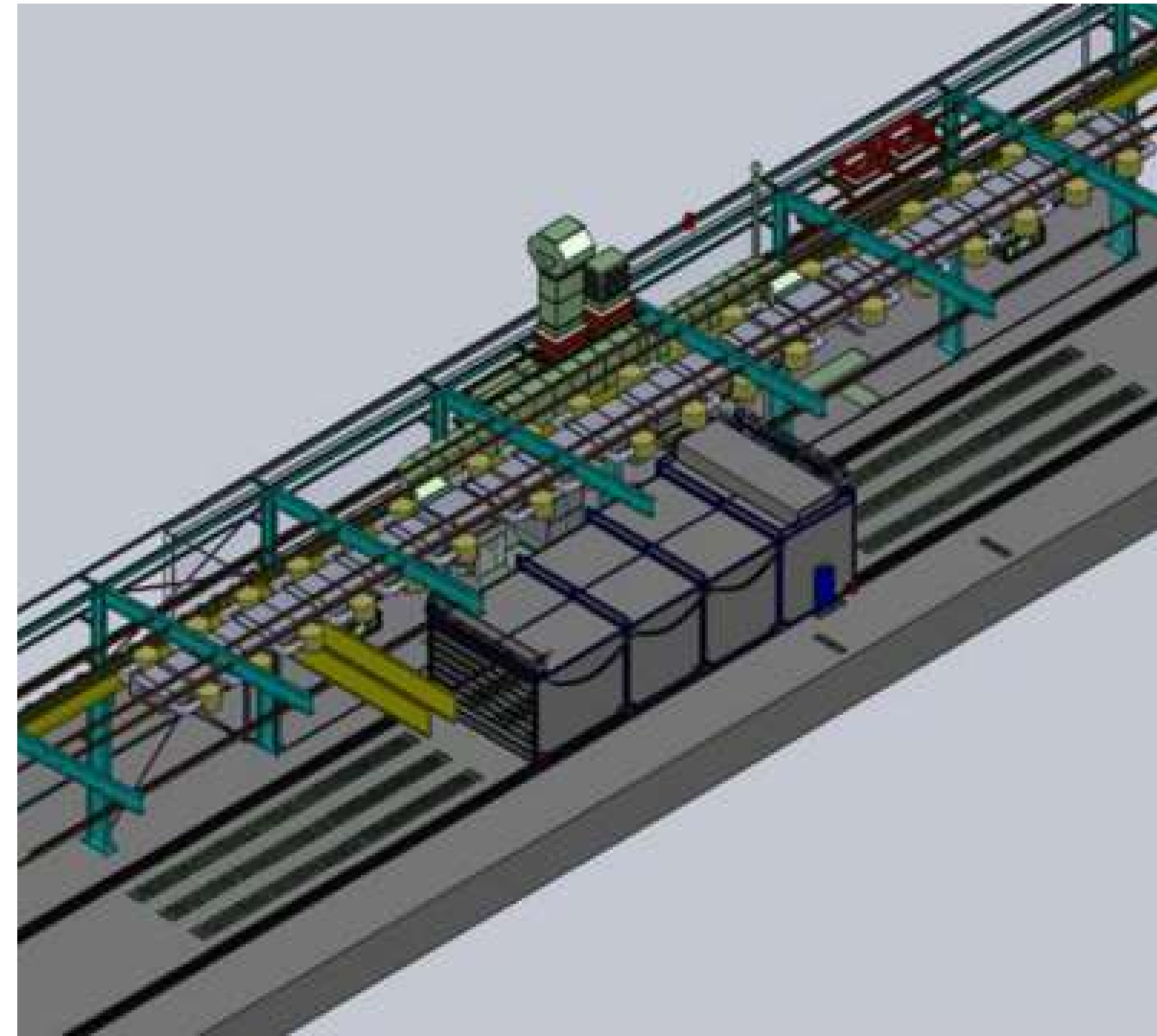
Steel structures

Technical Data

- Blast room 20 x 6 x 4 m
- Open-space paint spraying system with long-range nozzles 54 x 6 x 8 m
- Movable telescopic drying tunnel 18 x 6 x 4 m

Special features

- Open-space paint spraying system with heat recovery system by plate heat exchanger





OPEN-SPACE PAINT SPRAYING SYSTEM WITH TELESCOPIC DRYER AND BLASTROOM



Blastroom



Open-space paint spraying system with telescopic dryer



SUPERIOR SURFACE TREATMENT CENTRE

Industry Sector

Steel construction

Work piece

Steel components

Technical Data

- 1 Blast room 24 x 8 x 7 m
- 1 Blast room 12 x 4.5 x 4 m
- 1 Zinc spraying equipment for zinc spraying room 9 x 4.5 x 4 m
- 2 Open-space paint spraying systems 36 x 6 x 8 m each
- 1 Open-space paint spraying system 18 x 6 x 8 m
- 1 Moveable telescopic dryer 12 x 7 x 5 m
- 1 Moveable dryer 6 x 7 x 5 m
- 1 Paint spraying booth for small parts 7 x 4 x 3.5 m
- 2 Chamber dryers for small parts 7 x 4.1 x 3.5 m each

Special features

- Small blast room designed for the use of two different types of abrasive
- Open-space paint spraying systems with person detection system
- Manual overhead conveying system for small parts with two lifting/lowering stations for the loading/unloading area





SUPERIOR SURFACE TREATMENT CENTRE



BLASTROOM WITH LONGITUDINAL AND CROSS LAMELLA-TYPE CONVEYOR

- 2 electrically operated roll-up doors: 7.8 x 6.9 m each
- Suction power: 45,000 m³/h
- Media silo: 1,500 l
- 2 Pressure blast pots: 200 l each
- Floor completely covered with gratings for a wheel load of 1,500 kg/m²

Large blastroom 24 x 8 x 7 m



SUPERIOR SURFACE TREATMENT CENTRE



ZINC SPRAYING ROOM

Zinc spraying room

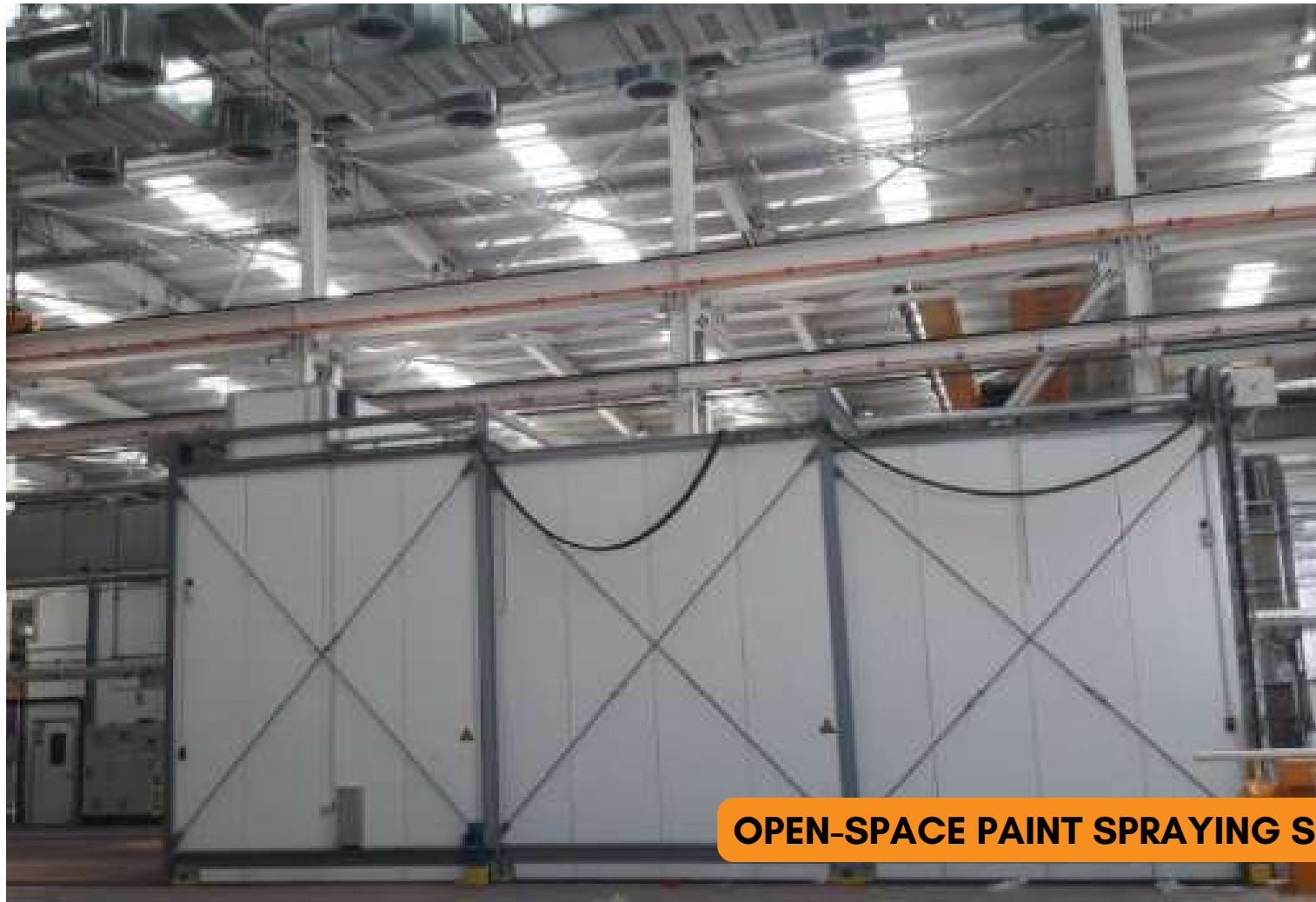
- 1 electrically operated roll-up door
- Suction power: 10,000 m³/h



Filter unit



SUPERIOR SURFACE TREATMENT CENTRE



OPEN-SPACE PAINT SPRAYING SYSTEM WITH LONG-RANGE NOZZLES



Large open-space paint spraying system with moveable telescopic dryer with three housing segments



SUPERIOR SURFACE TREATMENT CENTRE



OPEN-SPACE PAINT SPRAYING SYSTEM WITH LONG-RANGE NOZZLES



Small open-space paint spraying system with moveable dryer



SUPERIOR SURFACE TREATMENT CENTRE



PAINT SPRAYING BOOTH AND CHAMBER DRYER WITH MANUAL OVERHEAD CONVEYING SYSTEM FOR SMALL PARTS

Paint spraying booth



Chamber dryer



Manual overhead conveying system



BLASTROOM AND OPEN-SPACE PAINT SPRAYING SYSTEM WITH MOVABLE TELESCOPIC DRYER

Industry Sector

Steel construction

Work piece

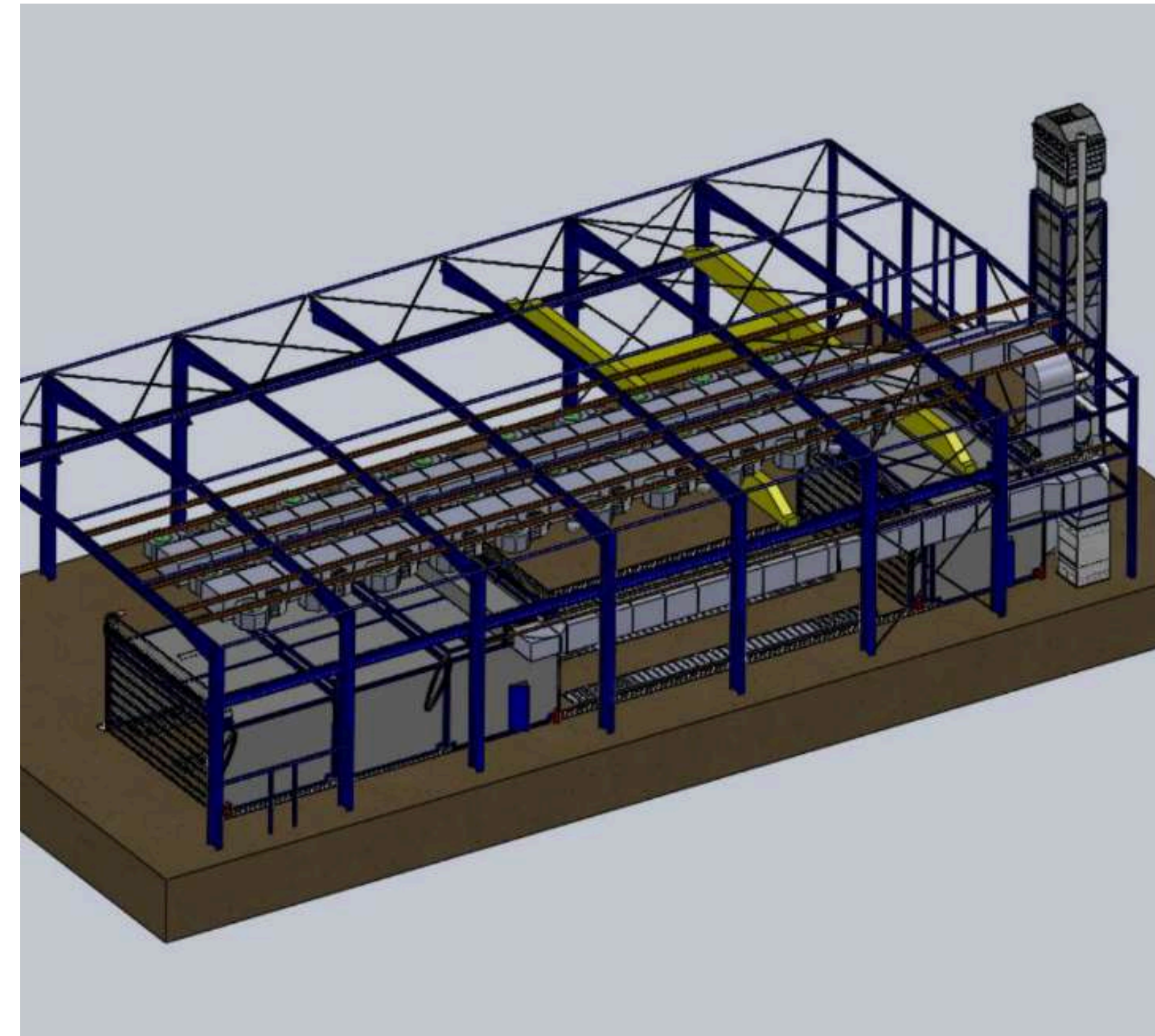
Steel components

Technical Data

- Blast room 17 x 5.5 x 4.2 m
- Open-space paint spraying system with long-range nozzles 30 x 8 m
- Movable telescopic dryer 15 x 8 x 3.5 m

Special features

- Blast room with maintenance platform on the silo
- Open-space paint spraying system with automatic person detection system with sensor technology, saver circuit and heat recovery system





BLASTROOM AND OPEN-SPACE PAINT SPRAYING SYSTEM WITH MOVABLE TELESCOPIC DRYER



BLASTROOM WITH LONGITUDINAL AND CROSS LAMELLA-TYPE CONVEYOR

- Suction power of 24,000 m³/h
- Media silo of 1,500 l
- 2 Pressure blast pots with 200 l each
- Maintenance platform on the silo



BLASTROOM AND OPEN-SPACE PAINT SPRAYING SYSTEM WITH MOVABLE TELESCOPIC DRYER



OPEN-SPACE PAINT SPRAYING SYSTEM WITH MOVABLE TELESCOPIC DRYER



Alternating parallel paint spraying and drying



BLASTROOM AND OPEN-SPACE PAINT SPRAYING SYSTEM WITH MOVABLE TELESCOPIC DRYER



MOVABLE TELESCOPIC DRYER





BLASTROOM AND OPEN-SPACE PAINT SPRAYING SYSTEMS WITH TELESCOPIC DRYING TUNNEL

Industry Sector

Steel construction

Work piece

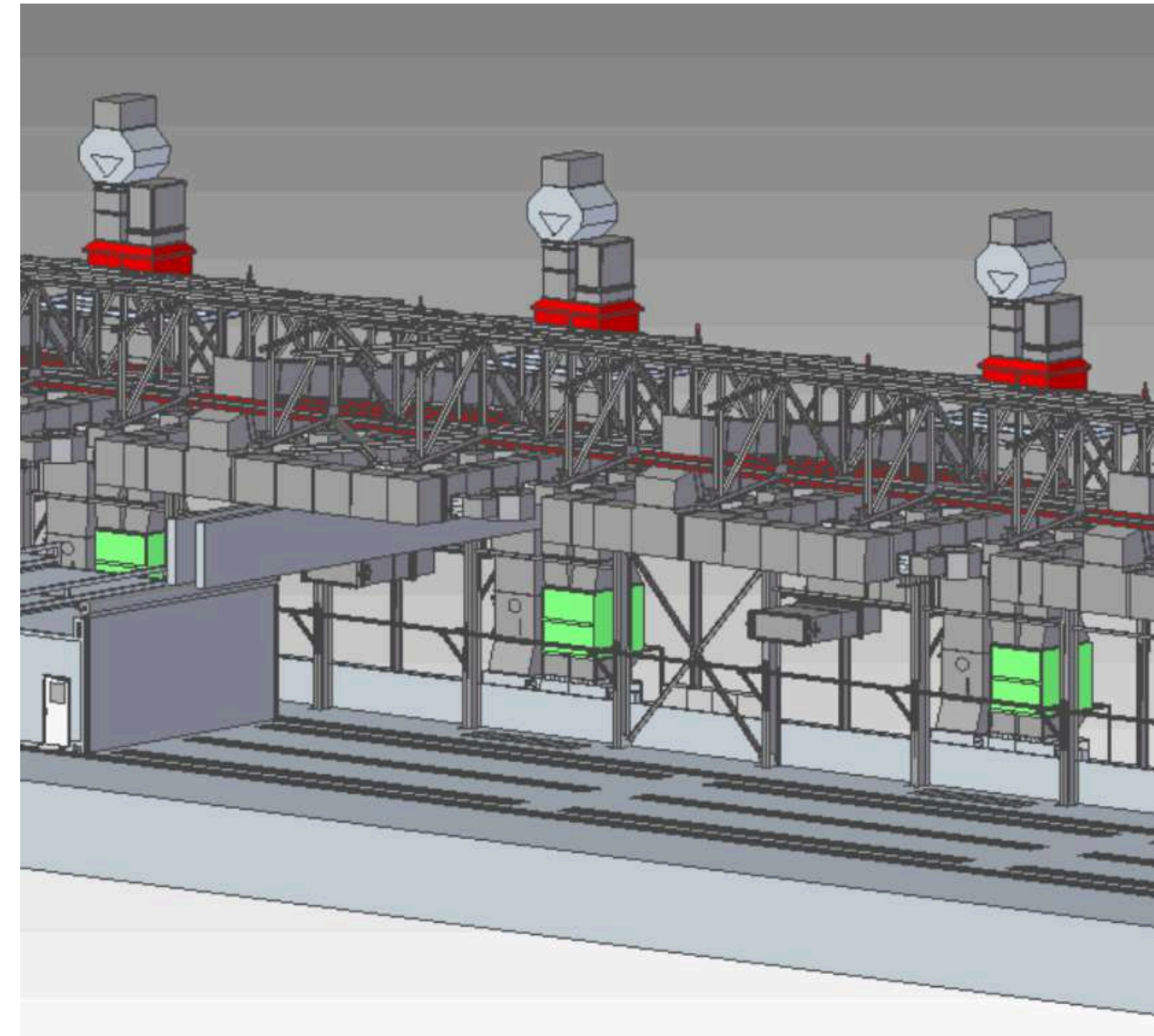
Steel structures

Technical Data

- 1 Blast room 16 x 6 x 5.4 m
- 4 Open-space paint spraying systems with long-range nozzles each 18 x 9 x 6 m
- 1 Telescopic drying tunnel 18 x 9 x 3.5 m

Special features

- Open-space paint spraying systems with heat recovery systems by plate heat exchanger, person detection system with sensor technology and saver circuit for the reduction of the air capacity if no spraying work is performed
- Blast room with exhaust air/circulating air operation and work piece transport device with pneumatic drive





BLASTROOM AND OPEN-SPACE PAINT SPRAYING SYSTEMS WITH TELESCOPIC DRYING TUNNEL



BLASTROOM

Blastroom



Media silos



BLASTROOM AND OPEN-SPACE PAINT SPRAYING SYSTEMS WITH TELESCOPIC DRYING TUNNEL



OPEN-SPACE PAINT SPRAYING SYSTEMS WITH TELESCOPIC DRYING TUNNEL





SUPERIOR SURFACE TREATMENT CENTRE

Industry Sector

Rail vehicle sector

Work piece

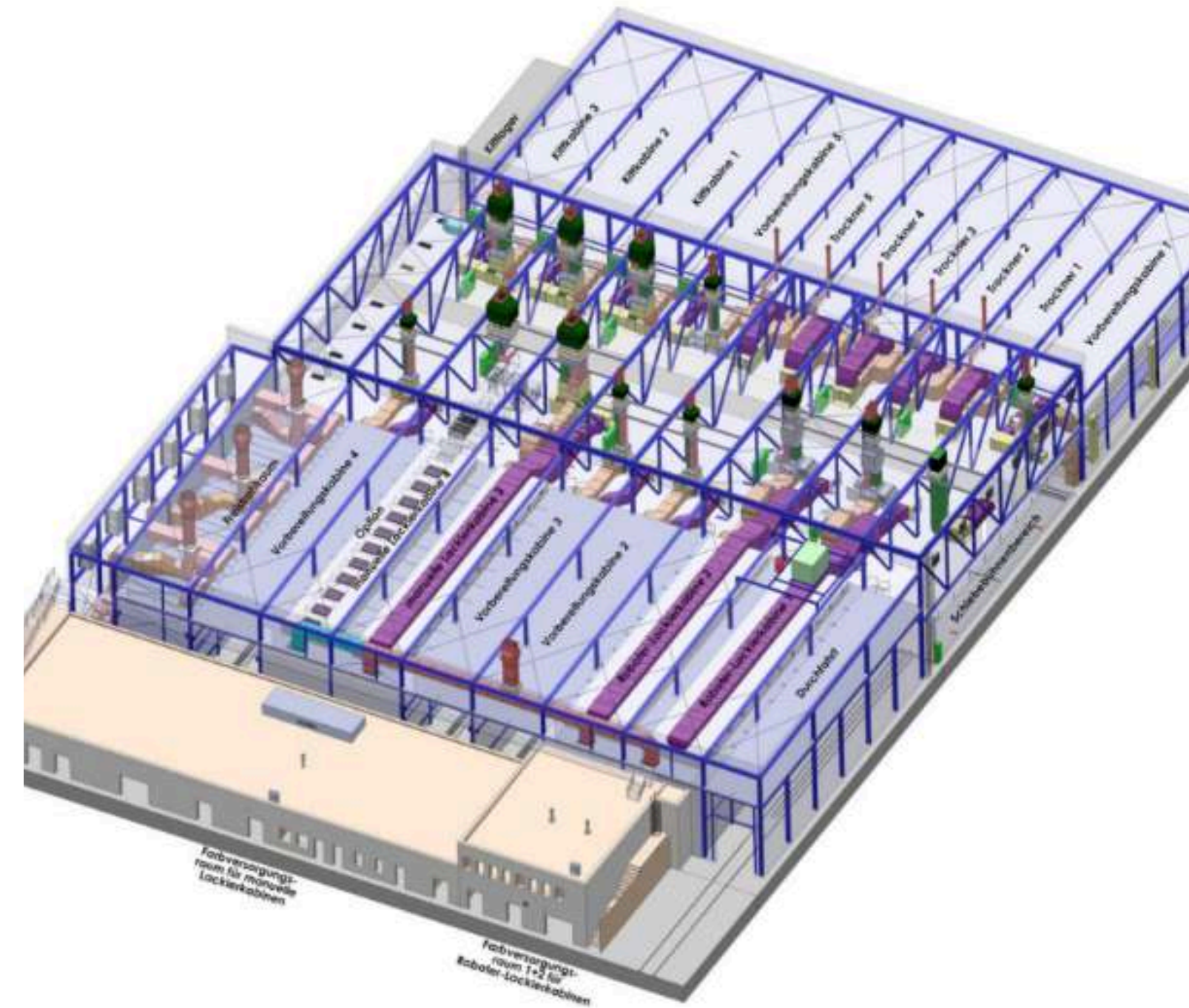
Rail vehicles

Technical Data

- 1 Blast room 32.5 x 7.5 x 8.5 m
- 2 Robotised paint spraying booths 32.5 x 8 x 8.5 m
- 1 Manual paint spraying booth 32.5 x 7 x 8.5 m
- 5 Preparation booths 2x 30.5 x 7 x 7.3 m and 3x 32.5 x 7 x 8.5 m
- 3 Booths for putty work 30.5 x 7 x 7.3 m
- 5 Dryers 30.5 x 5 x 7.3 m
- 3 Paint storage rooms 13.5 x 5.4 x 4.1 m

Special features

- 3 Preparation booths, the manual paint spraying booth and the blast room are equipped with horizontal scissor-type lifting platforms
- Robotised paint spraying of vehicle bodies
- Automatic traverser concept
- 18 booths on an area of approx. 8,000 m²





SUPERIOR SURFACE TREATMENT CENTRE



BLASTROOM WITH LONGITUDINAL LAMELLA-TYPE CONVEYOR AND CROSS SCREW CONVEYOR

- Mobile, compressed air operated media recovery unit
- 2 Horizontal scissor-type lifting platforms
- Suction power of 99,000 m³/h
- Media silo of 2,000 l
- 4 Pressure blast pots with 200 l each



SUPERIOR SURFACE TREATMENT CENTRE



Machine room with filter unit



Magnetic separating roller



Longitudinal lamella-type conveyor
and cross screw conveyor



Filter unit

BLASTROOM WITH LONGITUDINAL LAMELLA-TYPE CONVEYOR AND CROSS SCREW CONVEYOR



SUPERIOR SURFACE TREATMENT CENTRE



PREPARATION BOOTHS



Putty work

Masking

Grinding



SUPERIOR SURFACE TREATMENT CENTRE



MANUAL PAINT SPRAYING BOOTH



Manual paint spraying booth with horizontal scissor-type lifting platforms



SUPERIOR SURFACE TREATMENT CENTRE



ROBOTISED PAINT SPRAYING BOOTH



Robotised coating of vehicle bodies



SUPERIOR SURFACE TREATMENT CENTRE



PAINT STORAGE ROOM





SUPERIOR SURFACE TREATMENT CENTRE



LIFTING PLATFORMS



Horizontal scissor-type lifting platforms for the use in the blastroom



SUPERIOR SURFACE TREATMENT CENTRE



LIFTING PLATFORMS



Horizontal scissor-type lifting platforms for the use in the paint spraying and preparation booths



BLASTROOM AND COMBINED PAINT SPRAYING AND DRYING BOOTH

Industry Sector

Rail vehicle construction

Work piece

Car trains

Technical Data

- Blast room 20 x 6 x 6 m
- Combined paint spraying and drying booth 20 x 6 x 6 m

Special features

- Blast room with LED lighting, maintenance platform for the bucket elevator and the media reclamation system as well as lateral working platforms on the longitudinal sides of the blast room
- Combined paint spraying and drying booth with heat recovery system by plate heat exchanger, LED lighting, 2 pneumatically operated, side wall guided lifting platforms, saver circuit for the reduction of the air capacity if no spraying work is carried out and paint application devices





BLASTROOM AND COMBINED PAINT SPRAYING AND DRYING BOOTH



BLASTROOM

Blastroom with lateral working platforms



Media reclamation system with maintenance platform



BLASTROOM AND COMBINED PAINT SPRAYING AND DRYING BOOTH



COMBINED PAINT SPRAYING AND DRYING BOOTH

Combined paint spraying and drying booth



Pneumatically operated lifting platforms



COMBINED PAINT SPRAYING AND DRYING BOOTHS AND BLASTROOM

Industry Sector

Rail vehicle sector

Work piece

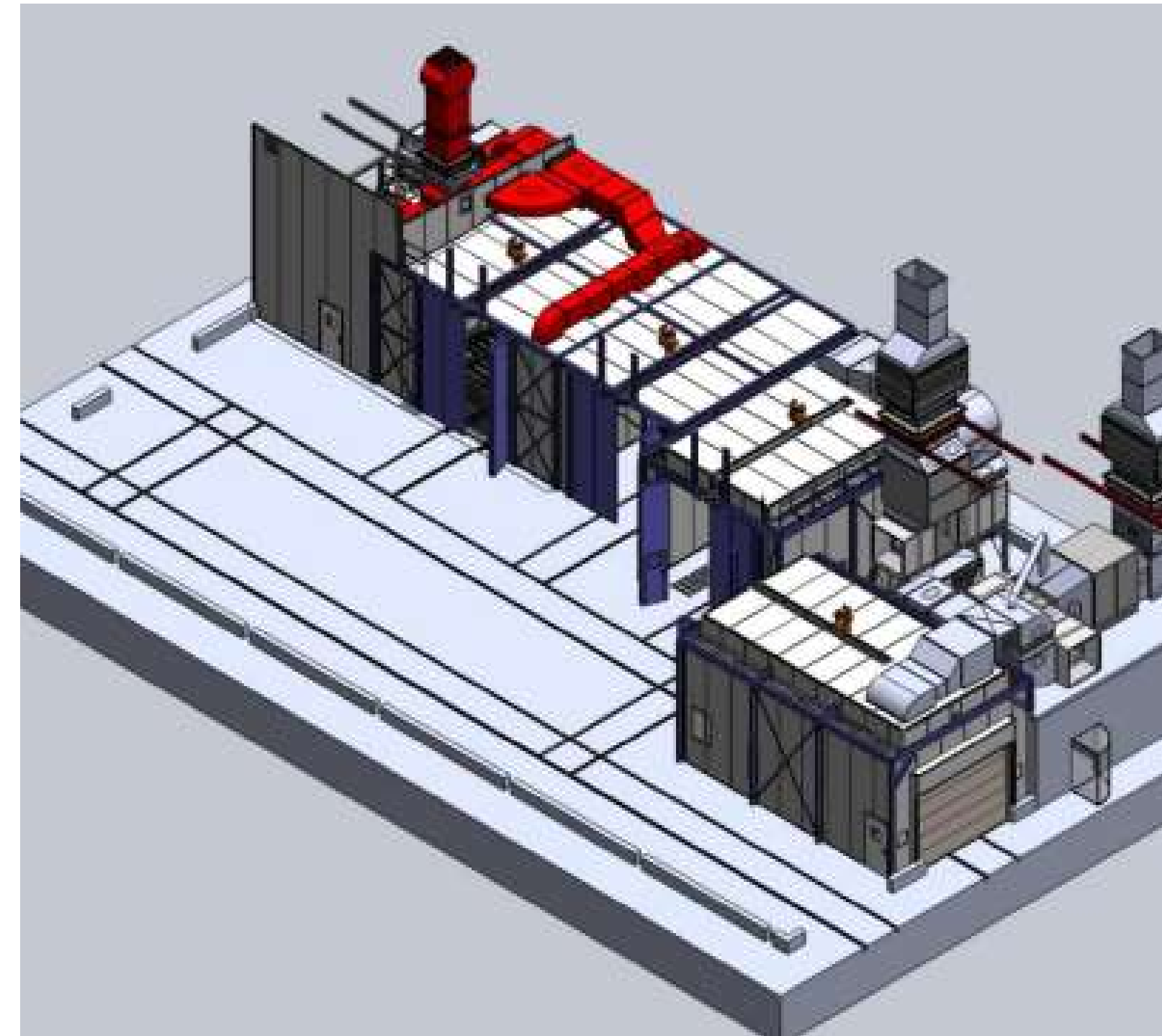
Bogies

Technical Data

- Blast room 7.8 x 8 x 5 m
- 2 Combined paint spraying and drying booths 9.5 x 6 x 4.5 m

Special features

- Blast room designed for summer/winter mode with automatic change-over flaps, ceiling slot and machine room housing
- Combined paint spraying and drying booth with heat recovery system by plate heat exchanger





COMBINED PAINT SPRAYING AND DRYING BOOTHS AND BLASTROOM



BLASTROOM WITH LONGITUDINAL AND CROSS LAMELLA-TYPE CONVEYORS

- 1 Top-hung folding door 4 x 5 m
- Suction power of 24,000 m³/h
- Media silo of 1,500 l
- 1 Pressure blast pot of 200 l
- Floor partially covered with gratings for a wheel load of 2,000 daN



COMBINED PAINT SPRAYING AND DRYING BOOTHS

Paint spraying booth with sectional ventilation and heat recovery system



BLASTROOM AND MANUAL POWDER COATING SYSTEM WITH POWDER ENAMELLING FURNACE

Industry Sector

Galvanising plant

Work piece

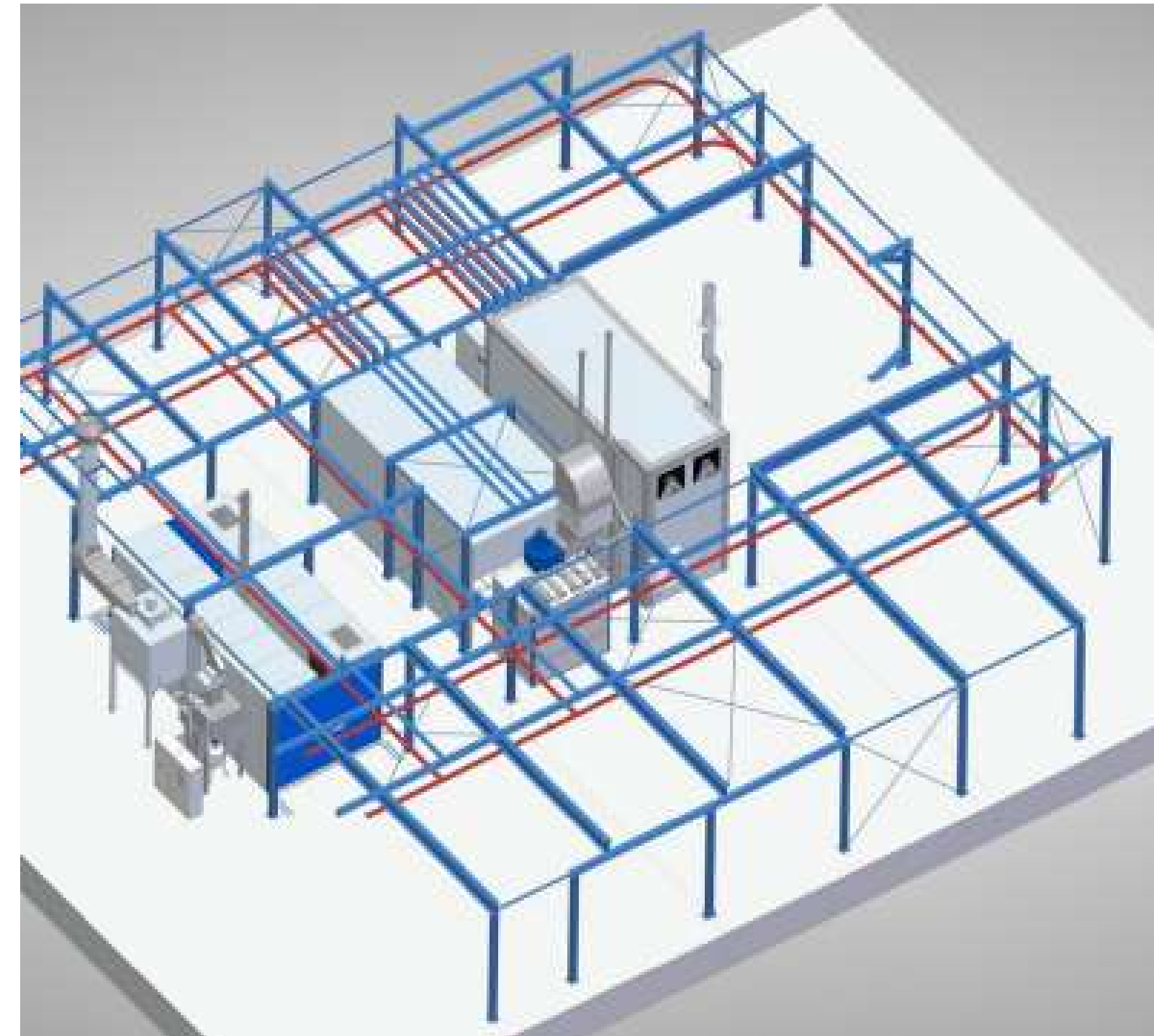
Several steel structures

Technical Data

- Blast room 8.0 x 4.0 x 4.0 m
- Large-capacity powder coating booth 8.0 x 4.0 x 4.0 m
- Powder enamelling furnace 6.2 x 3.0 x 3.7 m
- Manual overhead conveying system with longitudinal and cross transport

Special features

- Powder coating booth with fire detection system and application equipment
- Manual overhead conveying system with 25 cross beams and a loading capacity of 1,000 kg each
- Blast room and powder coating system equipped with LED lamps





BLASTROOM AND MANUAL POWDER COATING SYSTEM WITH POWDER ENAMELLING FURNACE



BLASTROOM





BLASTROOM AND MANUAL POWDER COATING SYSTEM WITH POWDER ENAMELLING FURNACE



MANUAL POWDER COATING SYSTEM





BLASTROOM AND MANUAL POWDER COATING SYSTEM WITH POWDER ENAMELLING FURNACE





PAINTING LINE

Industry Sector

Hot-dip galvanising shop/Service provider

Work piece

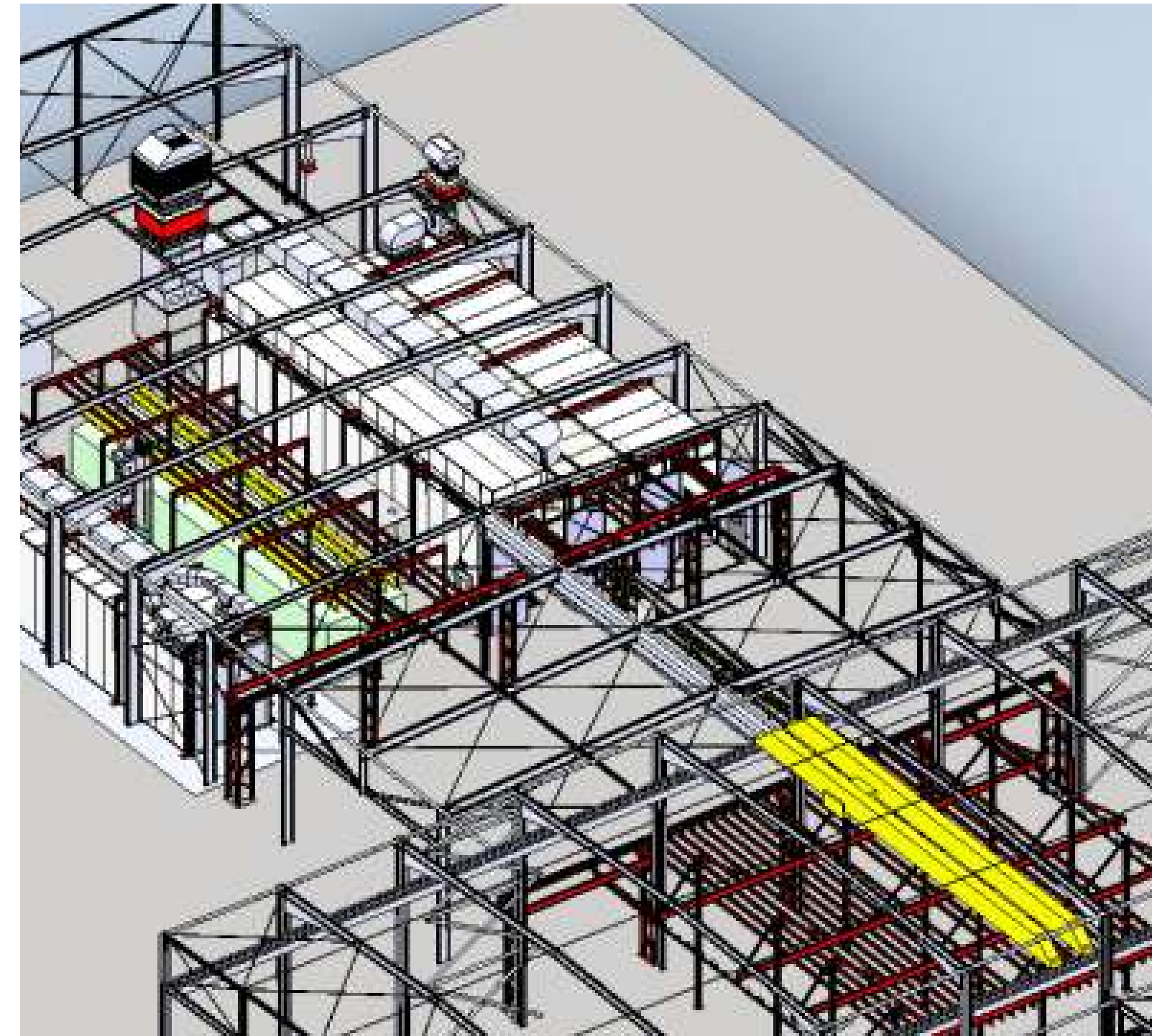
Steel construction components

Technical Data

- Blast room 18 x 3.6 x 4 m
- High-pressure cleaning booth 18 x 3.6 x 4 m
- Combined paint spraying and drying booth 18 x 3.6 x 4 m
- Paint dryer 18 x 3 x 4 m
- Manual overhead rail system with conveyor track

Special features

- Blast room for two different types of abrasive
- High-pressure cleaning booth with water recirculation system with high-pressure application
- Combined paint spraying and drying booth with person detection system and heat recovery system
- Manual overhead rail system for a work piece weight of up to 3 t and 2 lifting/lowering stations





PAINTING LINE





PAINTING LINE



HIGH-PRESSURE CLEANING BOOTH



PROCESS WATER RECIRCULATION SYSTEM



PAINTING LINE



PAINT SPRAYING BOOTH





PAINTING LINE



DRYER





PAINTING LINE



MANUAL OVERHEAD RAIL SYSTEM WITH CONVEYOR TRACK



INTERLINKED BLASTING AND POWDER COATING SYSTEM

Industry Sector

Construction machines

Work piece

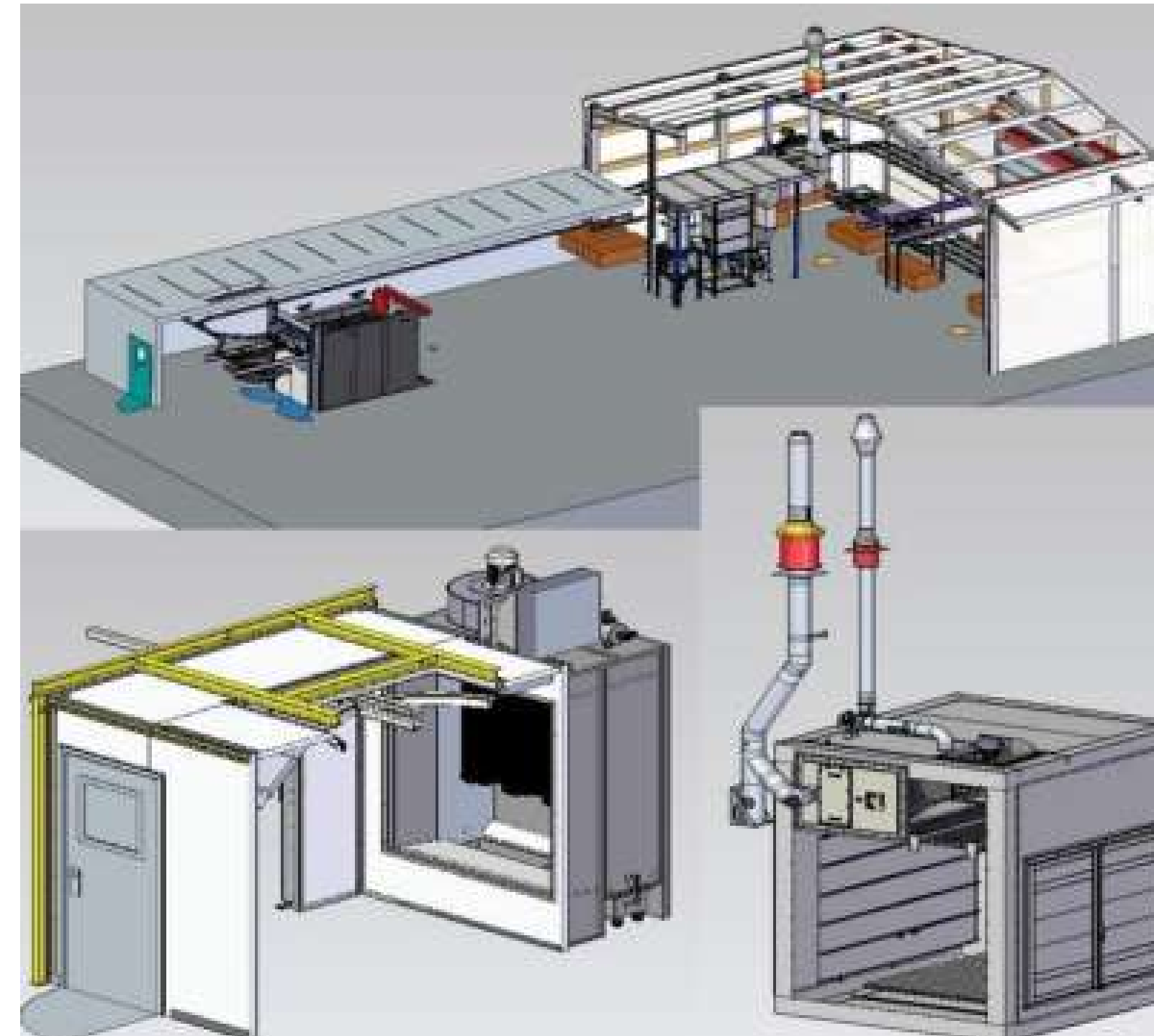
Attachment parts/components for construction machines

Technical Data

- Blast room 4.6 x 2.8 x 2.8 m
- Powder coating booth 4.0 x 2.8 x 2.6 m
- Powder enamelling furnace 2.2 x 3.0 x 2.6 m
- Conveyor system designed as manual overhead conveying system

Special features

- Powder coating booth with LED lighting
- Manual overhead conveying system with 15 traverses and a carrying capacity of 200 kg each, including two motor-driven lifting/lowering stations as well as a turning point in the powder coating booth





INTERLINKED BLASTING AND POWDER COATING SYSTEM



CONVEYOR SYSTEM DESIGNED AS MANUAL OVERHEAD CONVEYING SYSTEM



BLASTROOM

Blast room with wing door and rubber wear protection lining attached in a hanging way



INTERLINKED BLASTING AND POWDER COATING SYSTEM



Powder coating booth with laterally installed cartridge filter unit and 2 sliding doors designed as entry and exit door



Powder enamelling furnace with a circulating air heating of up to 230 °C



SUPERIOR SURFACE TREATMENT CENTRE

Industry Sector

Machine construction

Work piece

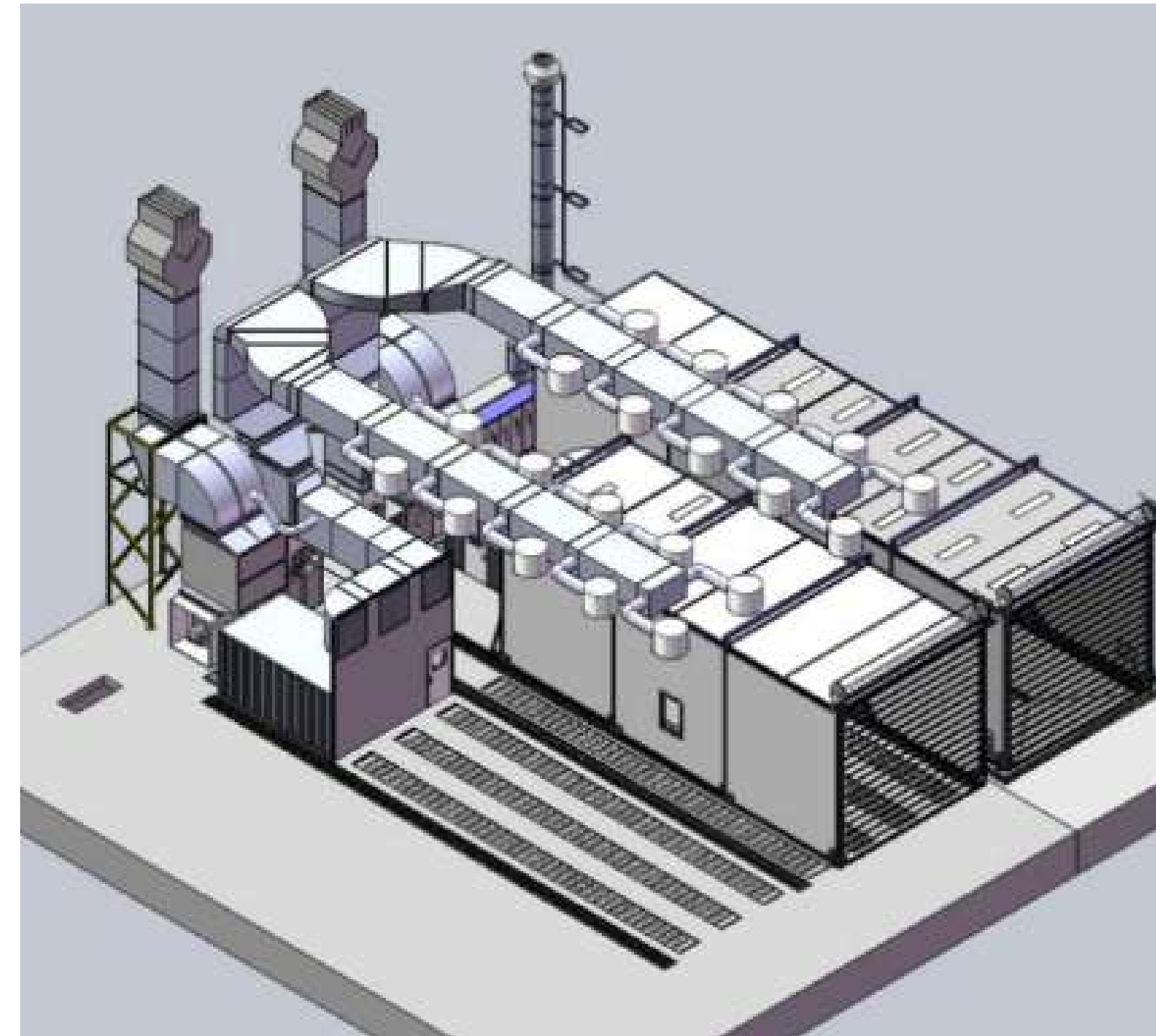
Steel components for the mining industry

Technical Data

- 1 Blast room 10 x 6 x 5 m
- 1 High-pressure cleaning area with telescopic cleaning booth 19.3 x 5.3 x 4.9 m
- 1 Process water treatment system
- 1 Machine room for the water treatment system
- 2 Open-space paint spraying systems with long-range nozzles 15 x 6 m
- 2 Telescopic drying tunnels 14.5 x 8.3 x 5.2 m

Special features

- Blastroom with maintenance platform on the silo
- Open-space paint spraying systems with heat recovery system by plate heat exchanger





SUPERIOR SURFACE TREATMENT CENTRE



BLASTROOM WITH LONGITUDINAL AND CROSS LAMELLA-TYPE CONVEYOR

- Suction power of 15,000 m³/h
- Media silo of 1,000 l
- Pressure blast pot of 200 l
- Floor completely covered with gratings for a wheel load of 8,000 daN on 200 x 500 mm

Maintenance platform on the silo with vertical ladder



SUPERIOR SURFACE TREATMENT CENTRE



HIGH-PRESSURE CLEANING AREA WITH TELESCOPIC CLEANING BOOTH



SUPERIOR SURFACE TREATMENT CENTRE



OPEN-SPACE PAINT SPRAYING SYSTEMS WITH LONG-RANGE NOZZLES



SUPERIOR SURFACE TREATMENT CENTRE



TELESCOPIC DRYER



BLASTROOM AND MACHINE TECHNIQUE FOR TWO COMBINED PAINT SPRAYING AND DRYING BOOTHS AND A HIGH-PRESSURE CLEANING ROOM

Industry Sector

Machine construction

Work piece

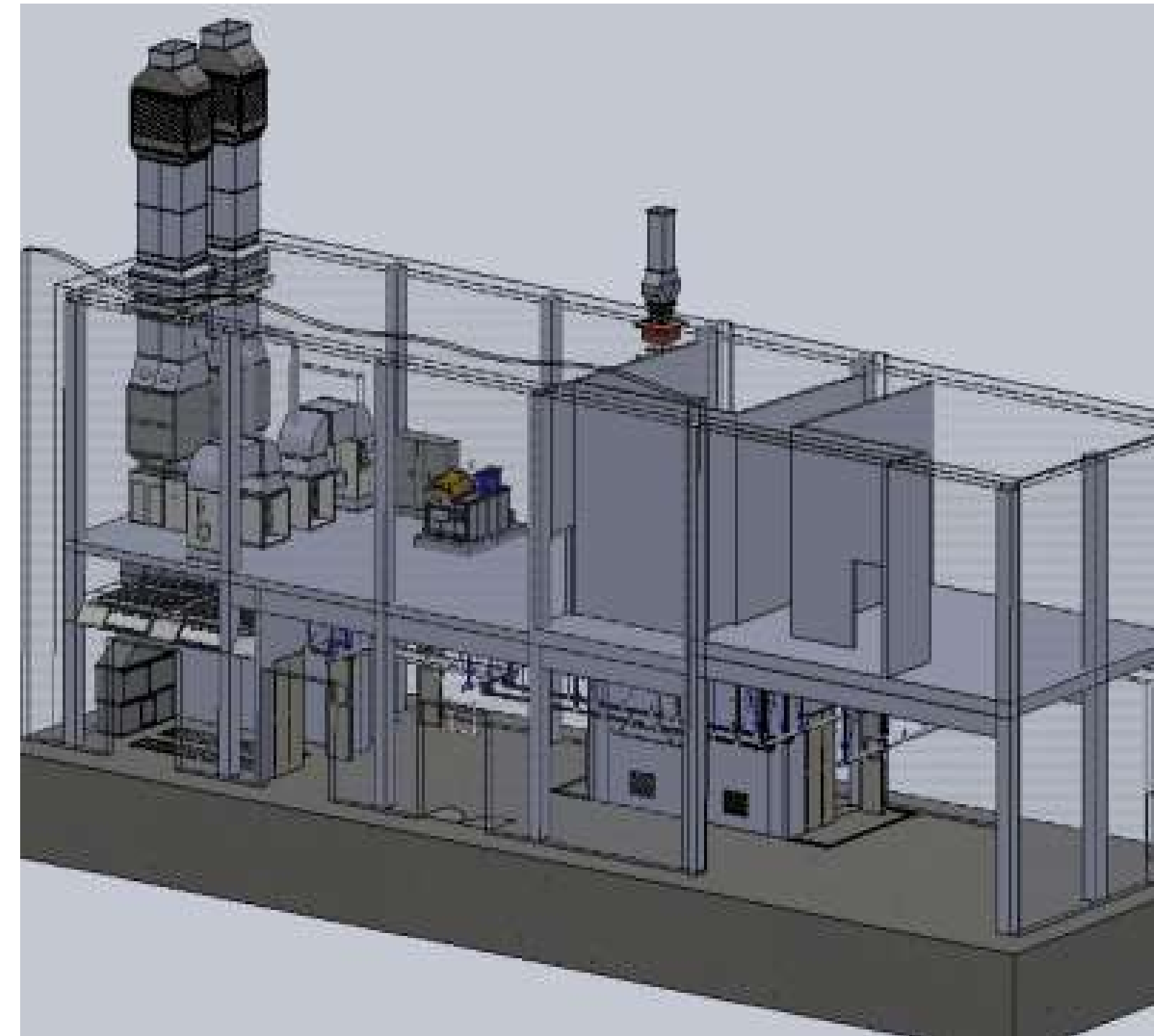
Machine tools

Technical Data

- Blast room 12.5 x 6 x 4 m
- 2 Combined paint spraying and drying booths 7 x 4 x 3.5 m
- High-pressure cleaning room 7 x 4 x 4.5 m
- Process water recirculation system with high-pressure application (180 bars)
- Manual overhead conveying system with 2 conveyor tracks for a work piece weight of up to 1.5 t

Special features

- Combined paint spraying and drying booths with heat recovery systems by plate heat exchanger and saver circuit





BLASTROOM AND MACHINE TECHNIQUE FOR TWO COMBINED PAINT SPRAYING AND DRYING BOOTHS AND A HIGH-PRESSURE CLEANING ROOM



HIGH-PRESSURE CLEANING ROOM WITH PROCESS WATER RECIRCULATION SYSTEM





BLASTROOM AND MACHINE TECHNIQUE FOR TWO COMBINED PAINT SPRAYING AND DRYING BOOTHS AND A HIGH-PRESSURE CLEANING ROOM



COMBINED PAINT SPRAYING AND DRYING BOOTHS





BLASTROOM AND MACHINE TECHNIQUE FOR TWO COMBINED PAINT SPRAYING AND DRYING BOOTHS AND A HIGH-PRESSURE CLEANING ROOM





COATING LINE

Industry Sector

Plant engineering

Work piece

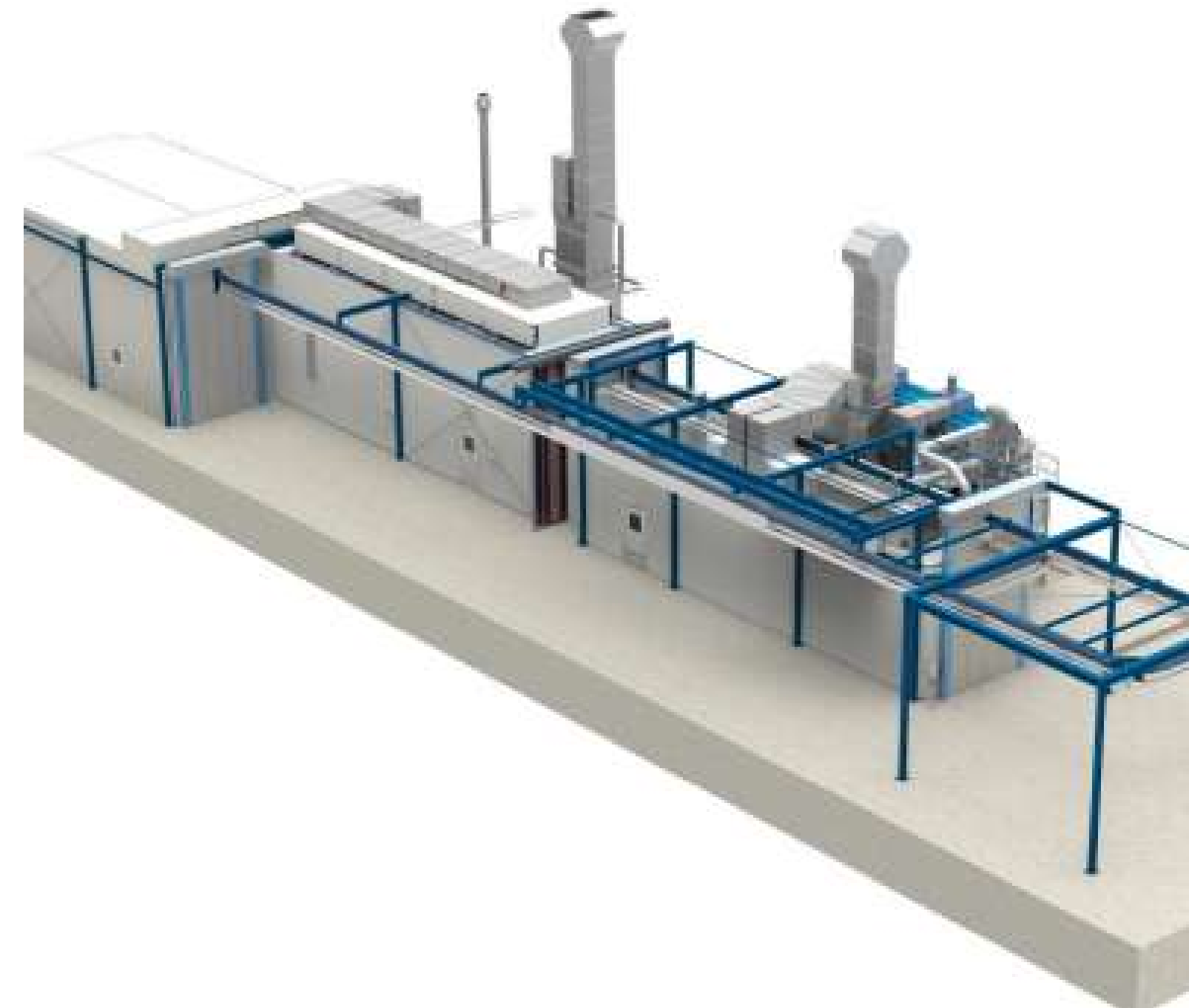
Parts of harvesters

Technical Data

- Passage-type blast room 15.5 x 4.2 x 4.5 m
- Passage-type paint spraying booth 15.5 x 4.2 x 5.4 m
- Passage-type dryer 15.5 x 7.9 x 5.4 m

Special features

- Power & Free conveying system for a work piece weight of up to 2 t, including lifting/lowering station
- Blast and paint spraying booth equipped with LED lamps and saver circuit to reduce the air capacity when no blasting/paint spraying work is carried out
- Blast room with maintenance platform for the filter unit, the bucket elevator and the media reclamation system
- Paint spraying booth with heat recovery system, Quick-Clean-System and person detection system





COATING LINE



Lifting/lowering station

POWER AND FREE CONVEYING SYSTEM



The access area of the booths (entrance into the booth) is provided with brush seal



COATING LINE



PASSAGE-TYPE BLASTROOM



- 2 Top-hung folding doors W x H: 2.7 x 4.5 m
- Suction power: 25,000 m³/h
- Media silo: 1,500 l
- 2 Pressure blast pots: 200 l each for the use of two different types of blast media
- Floor completely covered with gratings for a wheel load of 400 daN

REFERENCE 13



COATING LINE



Travel from the blast room into the paint spraying booth



Two pressure blast pots / Media silo



COATING LINE



PASSAGE-TYPE PAINT SPRAYING BOOTH

Paint spraying booth with foil cover on the walls as well as Quick-Clean-System for easy cleaning



Person detection system by means of cameras (detection of the operator for the automatic ventilation control)



COATING LINE



PASSAGE-TYPE PAINT SPRAYING SYSTEM



The supply air and exhaust air capacity is reduced as soon as the spray gun has been put into the holder



COATING LINE



Entrance into the passage-type dryer



Cooling zone behind the passage-type dryer



BLASTROOM WITH MEDIA BLAST ROBOT, HIGH-PRESSURE CLEANING BOOTH AND COMBINED PAINT SPRAYING AND DRYING BOOTH

Industry Sector

Wind energy sector, machine construction

Work piece

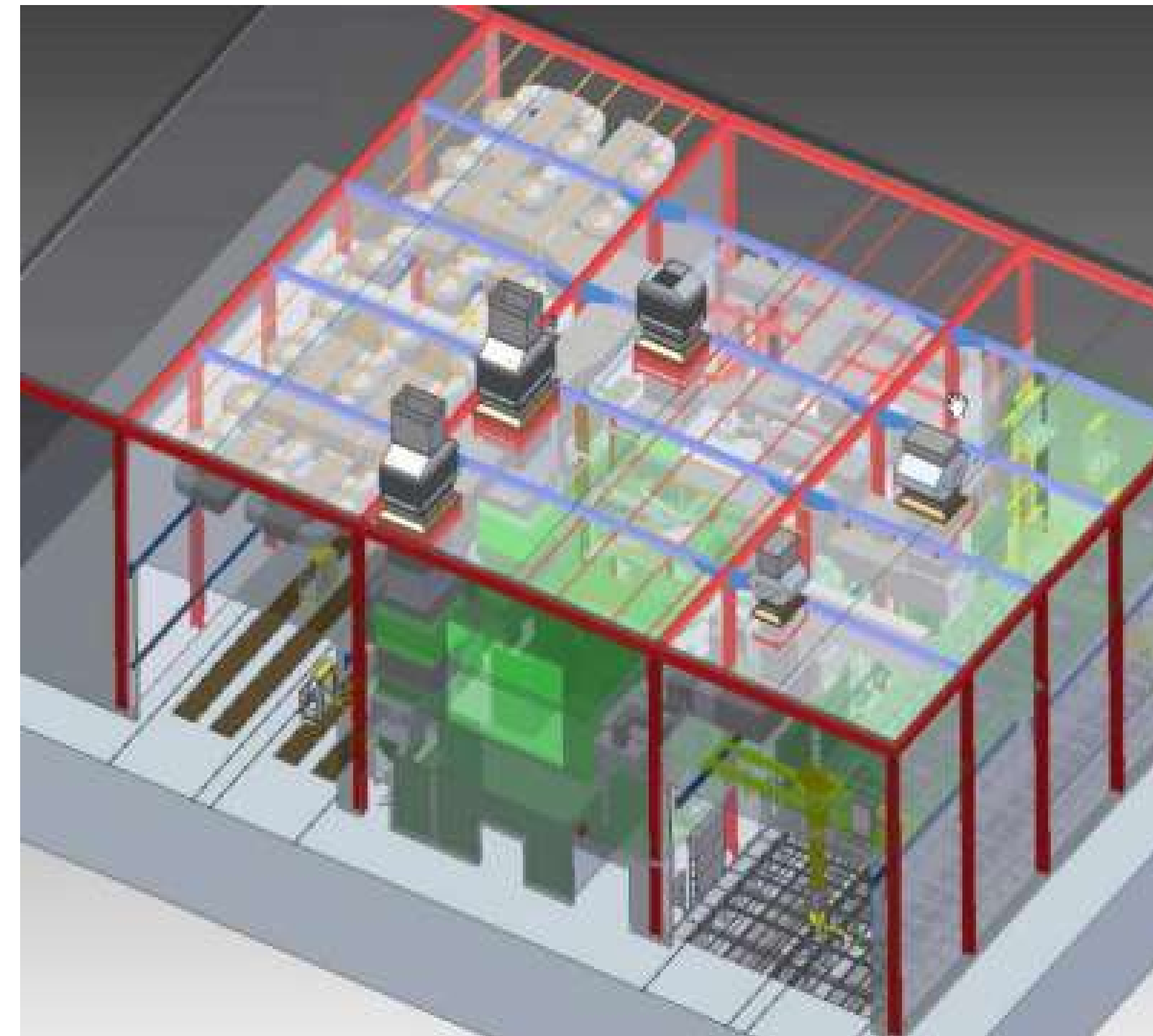
Components for wind power plants

Technical Data

- Blast room 25 x 10 x 10 m with media blast robot ReCo-Blaster®
- Combined paint spraying and drying booth 25 x 10 m
- High-pressure cleaning booth 12 x 10 x 9 m

Special features

- Blast room with media blast robot ReCo-Blaster® for automatic blasting as well as two additional scissor-type lifting platforms for the manual blasting process
- Combined paint spraying and drying booth with long-range nozzles, saver circuits for the reduction of the air capacity if no paint spraying work is carried out as well as two scissor-type lifting platforms
- High-pressure cleaning booth with process water recirculation system





BLASTROOM WITH MEDIA BLAST ROBOT, HIGH-PRESSURE CLEANING BOOTH AND COMBINED PAINT SPRAYING AND DRYING BOOTH



BLASTROOM WITH MEDIA BLAST ROBOT RECO-BLASTER

Blast room with media blast robot for the automatic blasting process that can be moved through 8 axes



Horizontal scissor-type lifting platforms for manual blasting



BLASTROOM WITH MEDIA BLAST ROBOT, HIGH-PRESSURE CLEANING BOOTH AND COMBINED PAINT SPRAYING AND DRYING BOOTH



High-pressure cleaning booth with vapour extraction system



Process water recirculation system



BLASTROOM WITH MEDIA BLAST ROBOT, HIGH-PRESSURE CLEANING BOOTH AND COMBINED PAINT SPRAYING AND DRYING BOOTH



COMBINED PAINT SPRAYING AND DRYING BOOTH

Combined paint spraying and drying booth with horizontal scissor-type lifting platforms



Adjacent paint storage room to store flammable liquids (solvent-based paints)



BLASTROOMS, COMBINED PAINT SPRAYING AND DRYING BOOTHS AND OPEN-SPACE PAINT SPRAYING SYSTEM

Industry Sector

Wind energy sector

Work piece

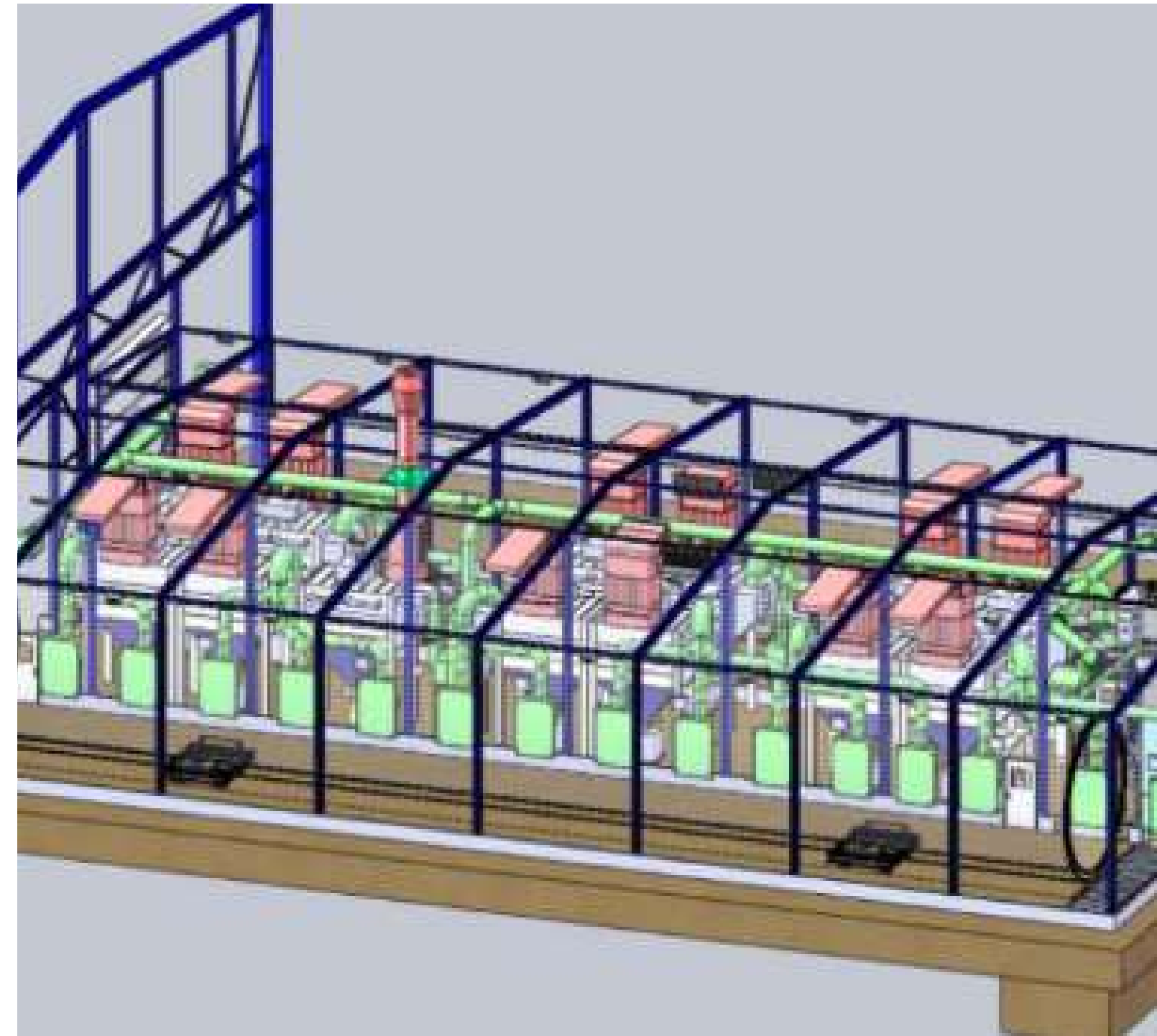
Wind towers

Technical Data

- 2 Blastrooms 38 x 7.5 x 6.5 m
- 2 Telescopic combined paint spraying and drying booths with long-range nozzles 42 x 7 x 7 m
- 1 Open-space paint spraying system with long-range nozzles 14 x 7 x 10 m

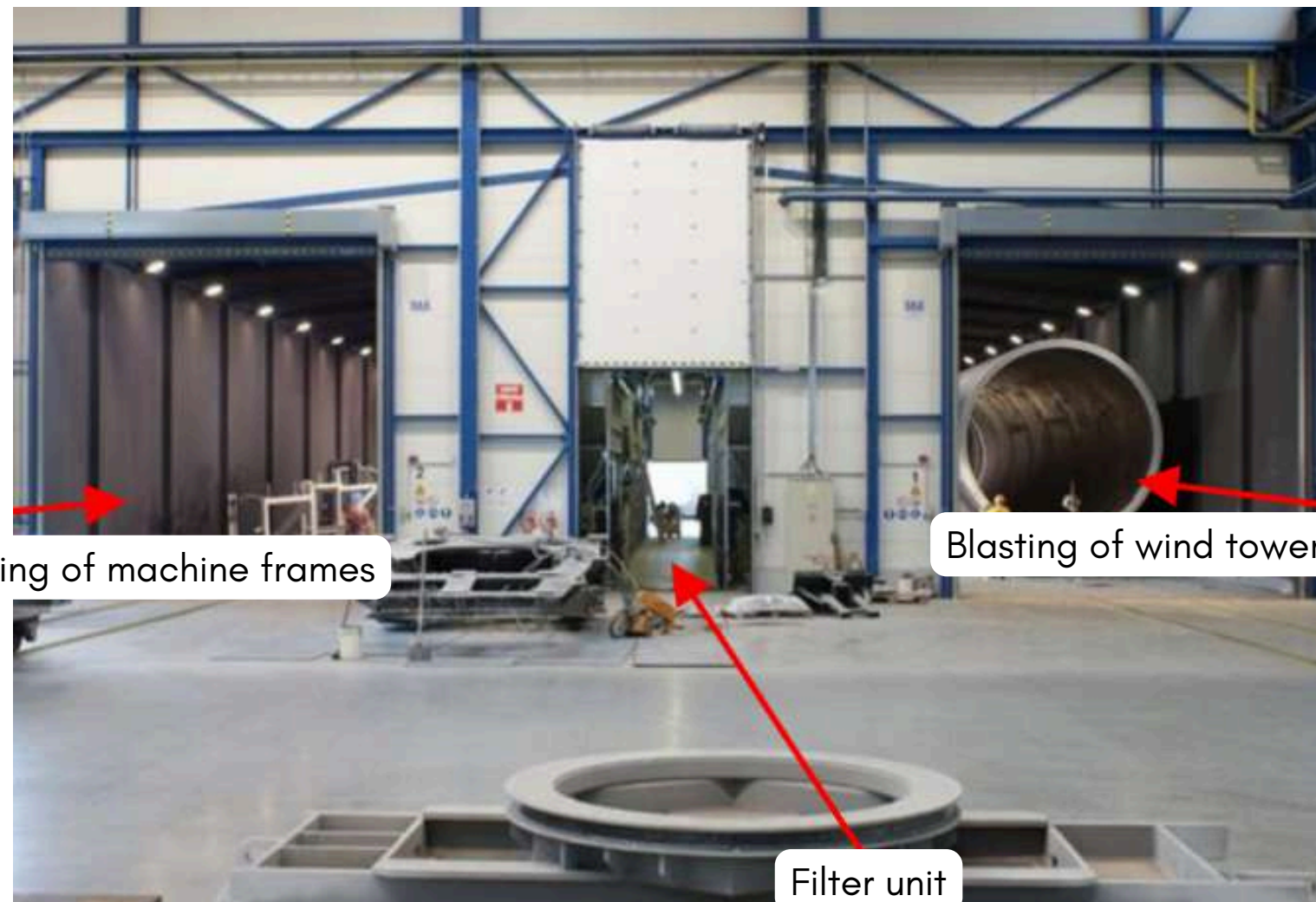
Special features

- Blastrooms with circulating air mode
- Combined paint spraying and drying booths with heat recovery system by plate heat exchanger





BLASTROOMS, COMBINED PAINT SPRAYING AND DRYING BOOTHS AND OPEN-SPACE PAINT SPRAYING SYSTEM



TWO BLASTROOMS WITH CROSS CONVEYOR BELT

- 1 Roll-up door each 6 x 6.2 m
- Suction power of 90,000 m³/h
- Media silo of 12,000 l
- 2 Pressure blast pots with 200 l each (can be extended to 4)
- Floor partially covered with gratings for a wheel load of 3,500 daN



BLASTROOMS, COMBINED PAINT SPRAYING AND DRYING BOOTHS AND OPEN-SPACE PAINT SPRAYING SYSTEM



TWO TELESCOPIC PAINT SPRAYING AND DRYING BOOTHS



BLASTROOMS, COMBINED PAINT SPRAYING AND DRYING BOOTHS AND OPEN-SPACE PAINT SPRAYING SYSTEM



OPEN-SPACE PAINT SPRAYING SYSTEM WITH LONG-RANGE NOZZLES





BLASTROOM AND COMBINED PAINT SPRAYING AND DRYING BOOTHS

Industry Sector

Wind energy sector

Work piece

Wind towers

Technical Data

- 2 Blastrooms 38.2 x 7 x 6.5 m
- 3 Combined paint spraying and drying booths 38 x 7 x 6.5 m

Special features

- Blastrooms with circulating air mode
- Combined paint spraying and drying booths with sectional ventilation





BLASTROOM AND COMBINED PAINT SPRAYING AND DRYING BOOTHS



BLASTROOM WITH CONVEYOR BELT

- 2 Top-hung folding doors each 6 x 6.2 m
- Suction power of 75,000 m³/h
- Media silo of 12,000 l
- 3 Pressure blast pots with 200 l each (can be extended to 4)
- Floor partially covered with gratings for a wheel load of 3,500 daN



BLASTROOM AND OPEN-SPACE PAINT SPRAYING SYSTEM

Industry Sector

Scaffold construction and service provider for surface treatment technology

Work piece

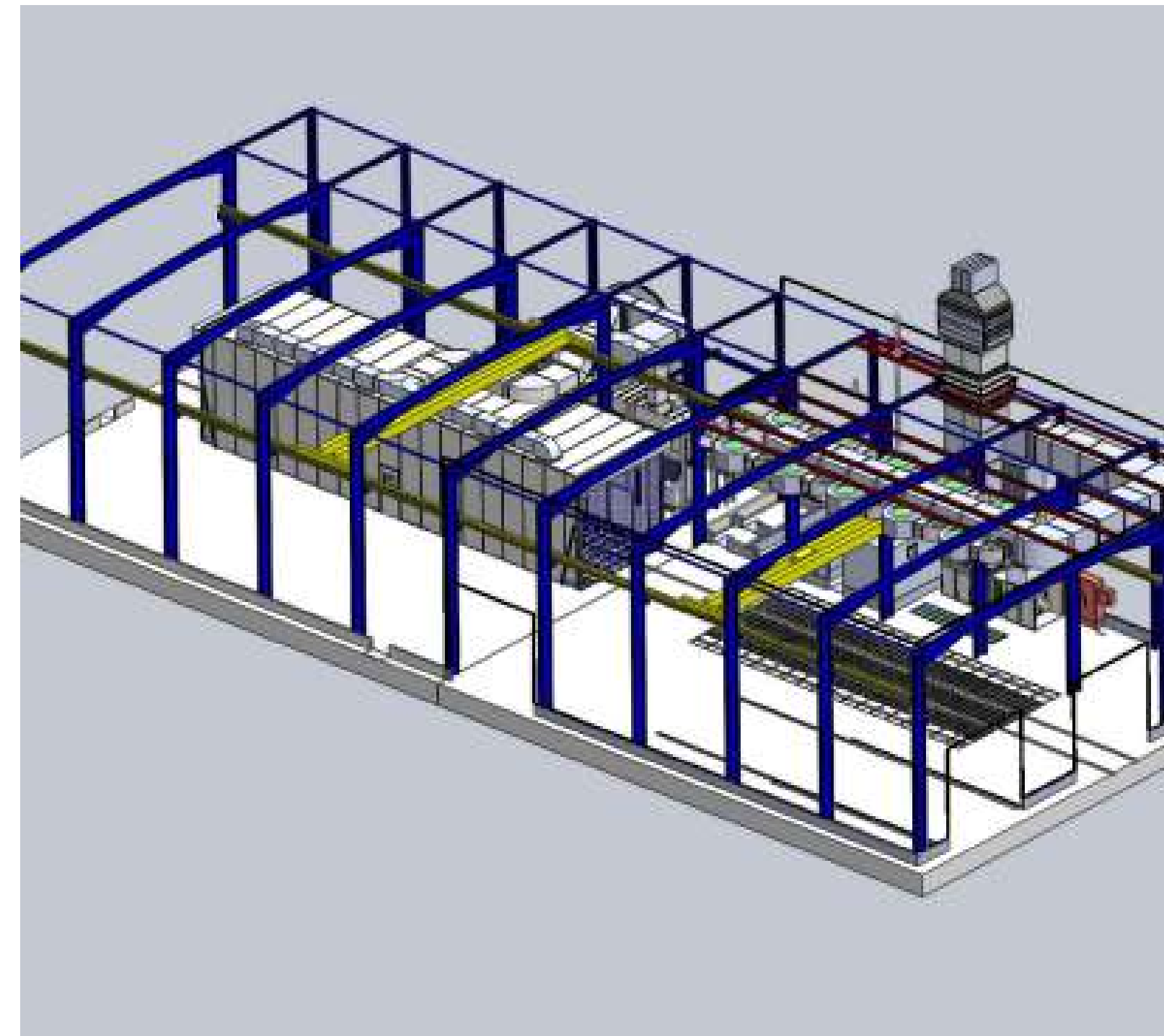
Steel components

Technical Data

- Blast room 20 x 5 x 5 m
- Open-space paint spraying system with long-range nozzles 14.5 x 6 x 8 m

Special features

- Blast room with automatic change-over flaps for summer/winter mode and a maintenance platform on the silo
- Open-space paint spraying system with person detection system, Quick-Clean-System and heat recovery system





BLASTROOM AND OPEN-SPACE PAINT SPRAYING SYSTEM



BLASTROOM WITH LONGITUDINAL AND CROSS LAMELLA-TYPE CONVEYOR

- 2 Roll-up doors 4.5 x 4.5 m
- Suction power of 30,000 m³/h
- Media silo of 1,500 l
- 2 Pressure blast pots with 200 l each
- Floor completely covered with gratings for a wheel load of 3,000 daN



BLASTROOM AND OPEN-SPACE PAINT SPRAYING SYSTEM



OPEN-SPACE PAINT SPRAYING SYSTEM



BLASTROOM AND PAINT SPRAYING SYSTEM WITH 4 EXTRACTION WALLS

Industry Sector

Pipeline Equipment

Work piece

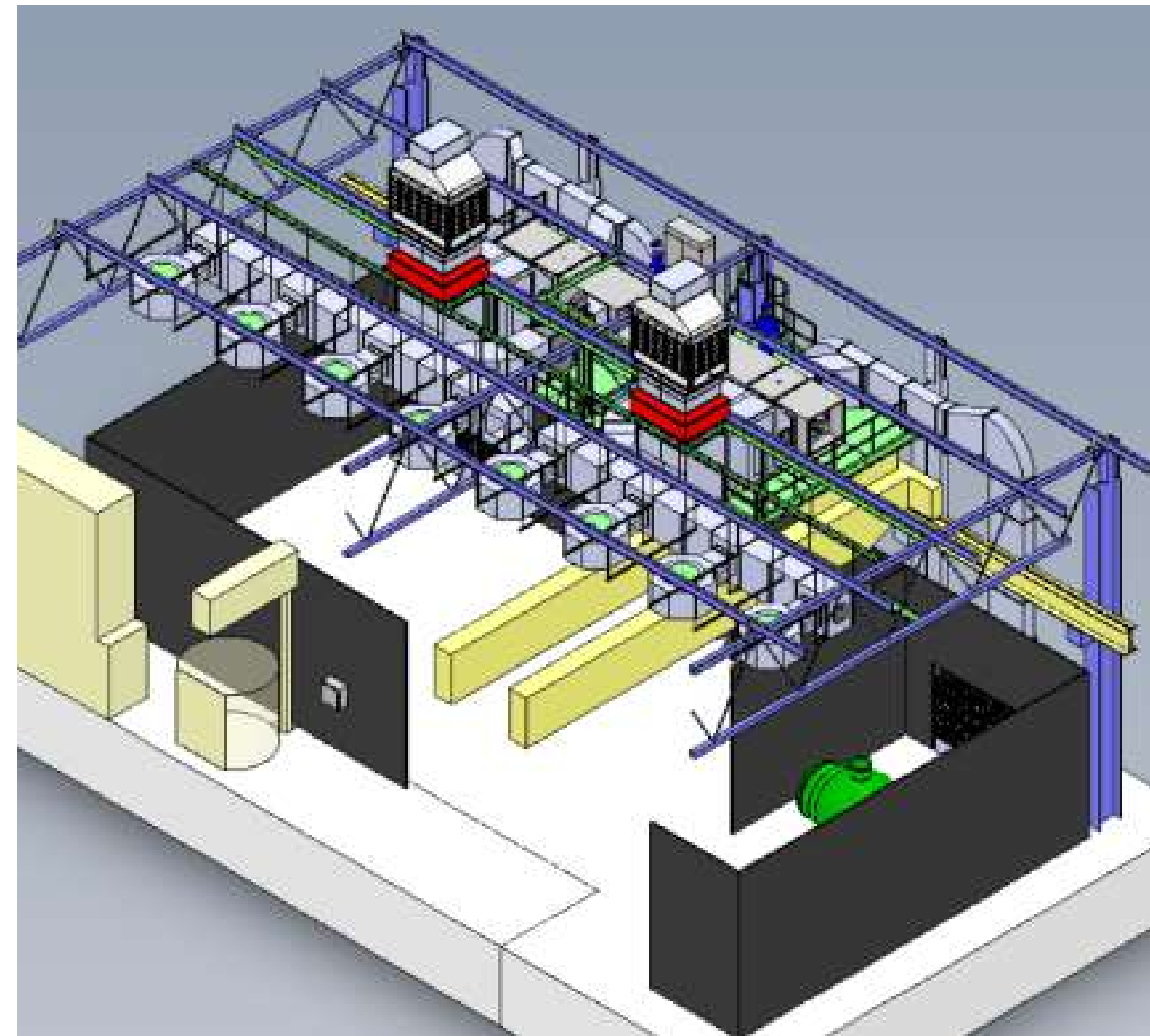
Large ball valves

Technical Data

- 1 Blast room 16 x 5.5 x 5 m
- 4 Extraction walls 4.0 x 2.0 m (W x H)

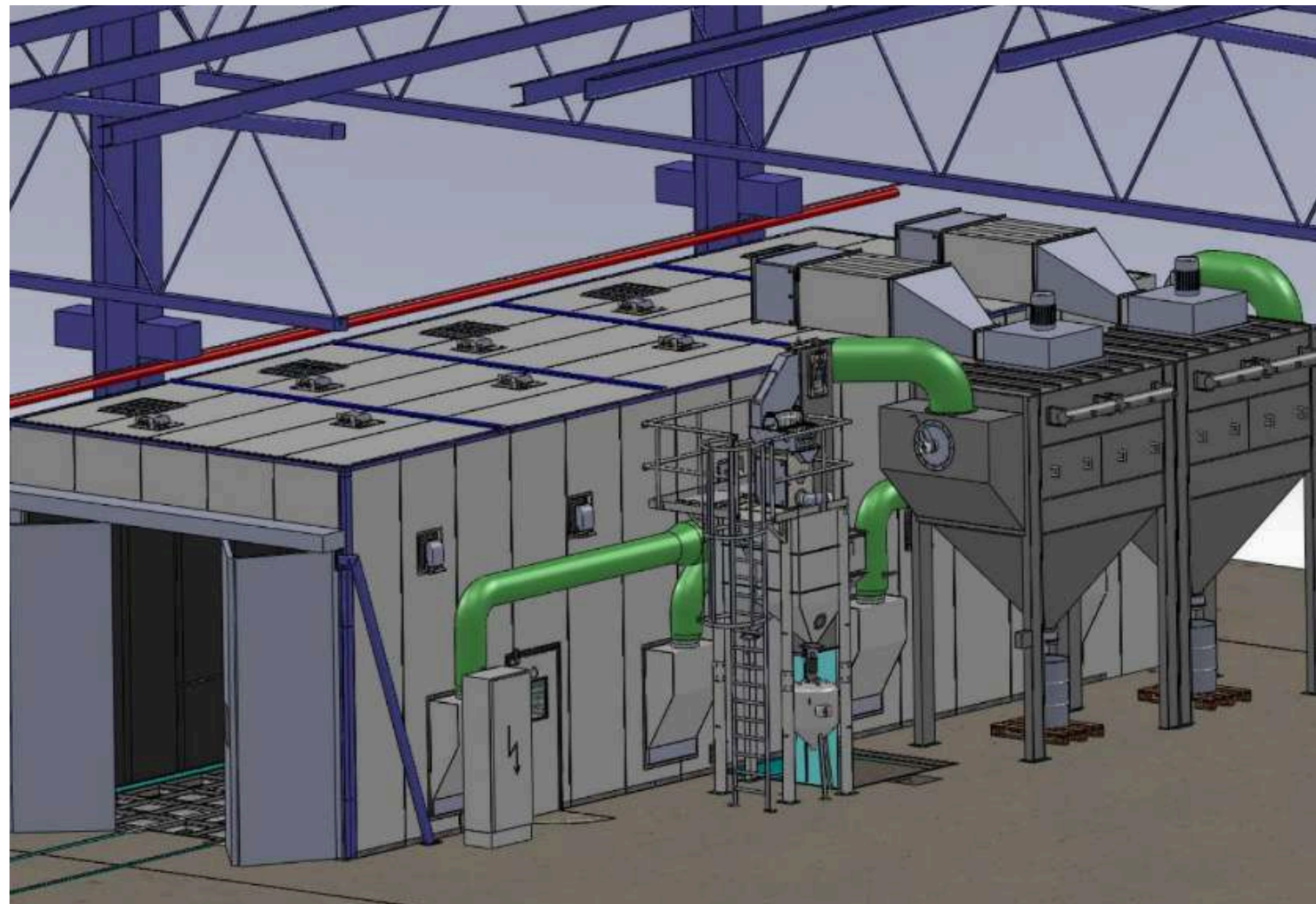
Special features

- Blast room with double magnet separating roller and maintenance platform, blasting with two different types of abrasive
- Extraction walls with two heat recovery systems by plate heat exchanger and frequency-controlled drives





BLASTROOM AND PAINT SPRAYING SYSTEM WITH 4 EXTRACTION WALLS

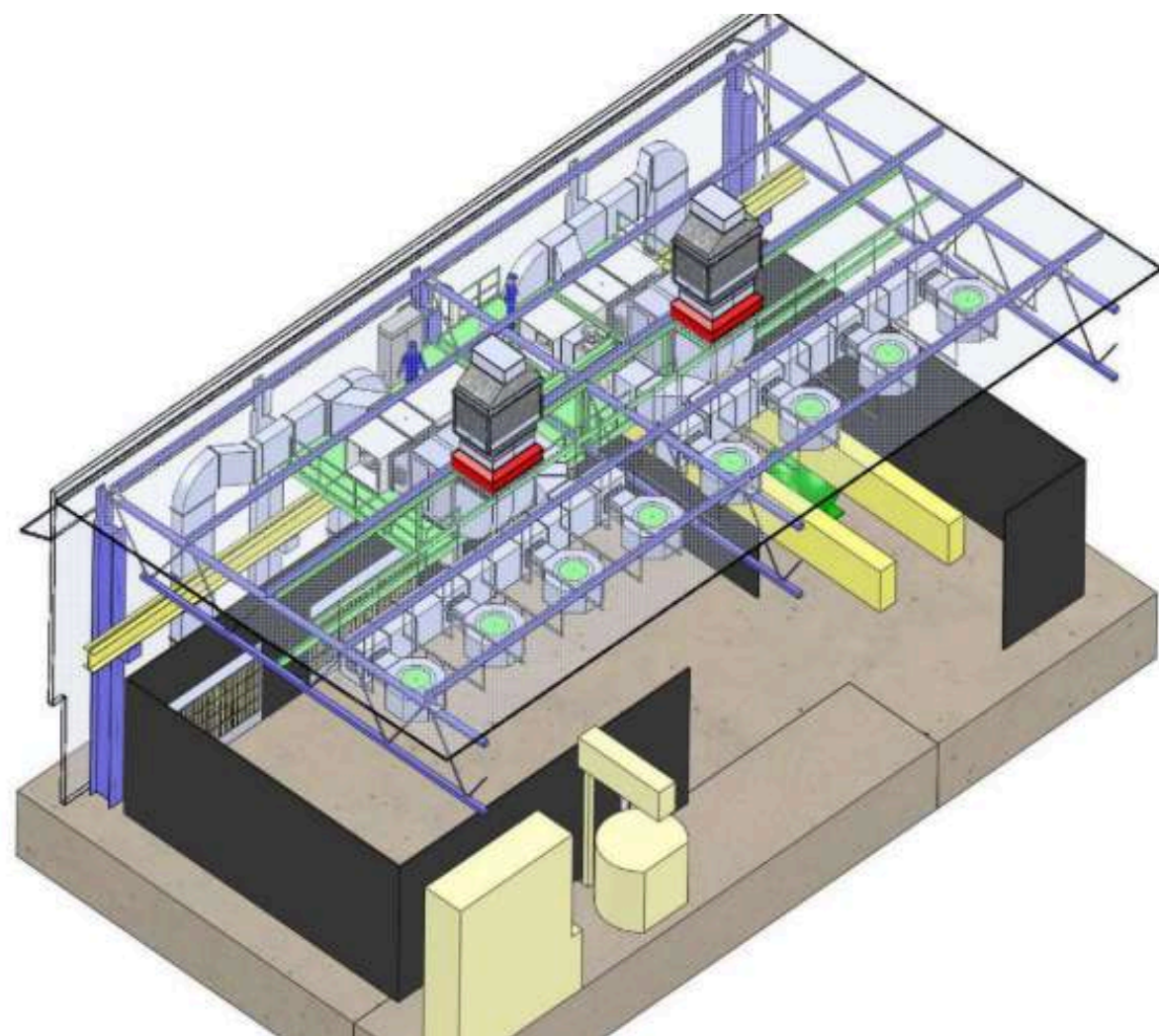


BLASTROOM WITH LONGITUDINAL AND CROSS SCREW CONVEYOR

- Top-hung folding door 5 x 4 m
- Suction power of 27,000 m³/h
- Media silo of 1,500 l
- 2 Pressure blast pots with 200 l each
- Floor partially covered with gratings for 3,000 daN/m²



BLASTROOM AND PAINT SPRAYING SYSTEM WITH 4 EXTRACTION WALLS



PAINT SPRAYING SYSTEM WITH 4 EXTRACTION WALLS

- 2 Ventilation units of 30,000 m³/h each with high-capacity filter elements
- Supply air via 8 long-range nozzles



**SPECIALIST
MACHINERY
SALES** AUSTRALIA, NEW ZEALAND & SE ASIA

SLF BLAST ROOMS

Explore the exceptional capabilities of SLF blasting systems for your projects. Renowned in the industry for their precision and reliability, SLF systems are engineered to deliver unparalleled performance in surface preparation and finishing.

Whether managing large-scale industrial projects or intricate components, SLF's advanced technology guarantees superior results with every application. Our systems are meticulously crafted to ensure consistent, high-quality outcomes, minimising downtime and maximising productivity. With SLF, rest assured that your blasting projects will be executed efficiently and up to the highest standards. Witness the transformative impact of SLF on your operations, ensuring immaculate, refined surfaces.

Check out our reference projects below to see the proven effectiveness of SLF systems across diverse applications and industries.

[LEARN MORE HERE ▶](#)





**SPECIALIST
MACHINERY
SALES** AUSTRALIA, NEW ZEALAND & SE ASIA

SLF MEDIA BLAST ROBOT - RECO-BLASTER

Our "ReCo-Blaster®" represents advanced automated blasting technology, featuring an 8-axis design controlled by electrical servo drives. With precise movement capabilities along the blast room, including rack and pinion drive and vertical telescopic axis, it ensures optimal mobility and accuracy.

Sealed bearings and polyurethane-coated arms protect against wear and blast media impact. Offline programming via CAD data and Robot Expert software enhances efficiency, while a handheld control panel enables real-time adjustments.

Check reference projects below for proven success in various applications.

[LEARN MORE HERE ▶](#)





**SPECIALIST
MACHINERY
SALES** AUSTRALIA, NEW ZEALAND & SE ASIA

SLF PAINTING SYSTEMS

Discover the exceptional capabilities of SLF Painting Systems, designed to revolutionise your coating processes with precision and efficiency. Our systems are engineered with cutting-edge technology to ensure superior results, whether you're painting large industrial components or intricate parts.

SLF Painting Systems offer unmatched flexibility, allowing you to customise your coating process according to your specific requirements. From wet paint spraying to powder coating, our systems cater to a wide range of applications, delivering high-quality finishes consistently. Equipped with innovative features such as customisable conveyor techniques, lifting platforms, and application techniques, SLF Painting Systems are tailored to optimise your workflow. Additionally, we provide ventilation components and equipment for paint mixing or storage rooms, ensuring a seamless and efficient painting process from start to finish.

Check below for examples of successful projects using SLF Painting Systems in various industries and applications, demonstrating our commitment to excellence and customer satisfaction.

[LEARN MORE HERE ▶](#)





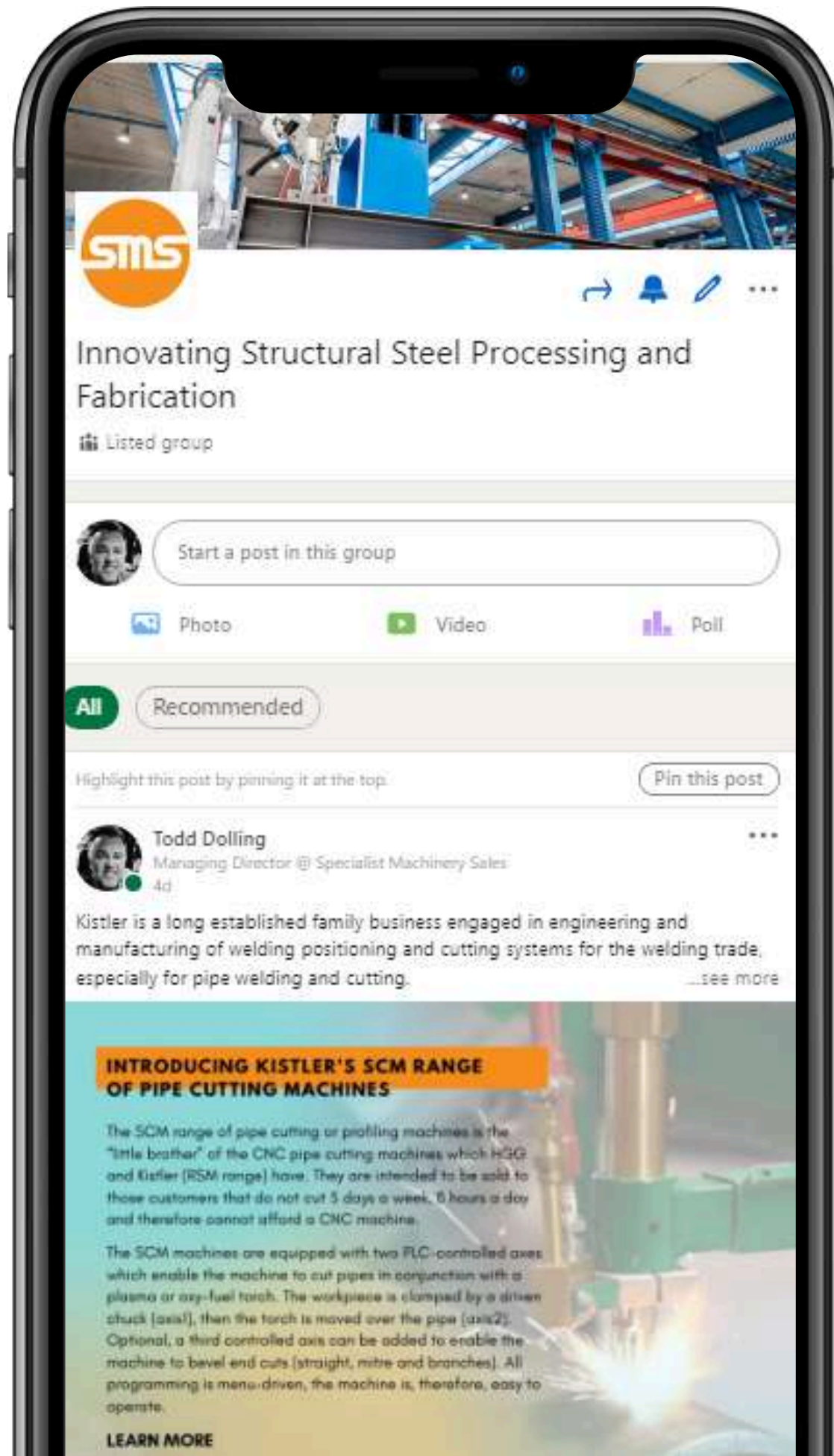
LOOKING TO BUY PRE-LOVED MACHINERY?

Specialist Machinery Sales offer second-hand or used structural steel processing machinery from Kaltenbach, Gietart, Haeusler, SLF and more.

Generally, the machines that SMS has access to are from trading for new machines offered from the machine tool builders to clients of SMS in Australia and New Zealand. Most machines are between 5 and 15 years of age with full-service history available. Some machines can be inspected under power or in their shipping packing ready for immediate delivery to Australasia.



[LEARN MORE HERE ▶](#)

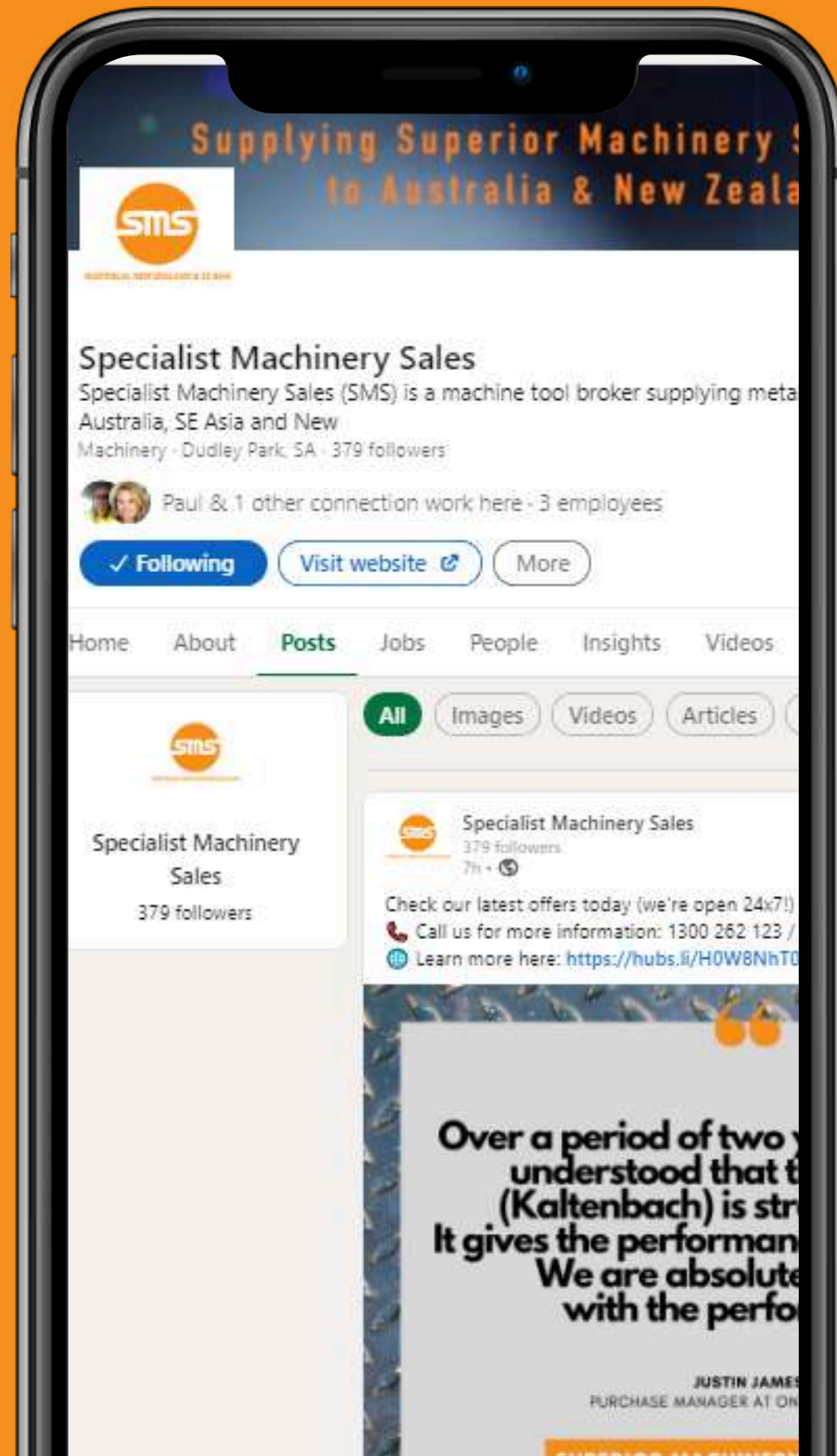


JOIN OUR EXCLUSIVE AND GROWING LINKEDIN GROUP

Join our growing and exclusive LinkedIn Group - [Innovating Structural Steel Processing and Fabrication Group](#).

In this group, we bring in thought leadership content, topics, trends and challenges within the steel industry and steel processing automation. We encourage everyone to share your business challenges and solutions that you have encountered and how steel processing automation had helped achieved your business objectives.

[**JOIN HERE**](#) ▶



HATE MISSING OUT?

Be the first to receive the latest promotions, new releases and discounted offers by following us on social:





**SPECIALIST
MACHINERY
SALES**

AUSTRALIA, NEW ZEALAND & SE ASIA



1300 262 123 / +61 8 6500 6880



**tellmemore@smsales.com.au
www.SMSales.com.au**

