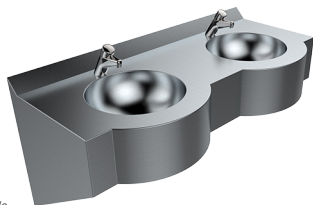


Curveline Multi Vanity Basin



HBCM

Scan QR code to view our installation notes



Product Info:

- Supplied in custom lengths
- Provides multiple basins in one seamless unit
- Robust & highly vandal resistant
- Removable, concealed access panel
- Concealed plumbing & wall fixings
- 40mm wastes and wall brackets supplied
- Optional tapware (see Tapware: Section 11)

To order this item please advise:

- Overall unit length
- Number of bowls required
- Tapware and tap hole details (if required)

Suggested Tapware:

(see Tapware Section: 11 for complete range of options)



TW-9201
Deluxe Timed Flow Pillar Tap



TW-9101
Eco Timed Flow Pillar Tap



TW-9110
Euro Basin Mounted Sensor Tap



TW-MIX-01
Basin Mounted Flick Mixer - Fixed

INSTALLATION NOTES

1) Fixture strength is ultimately determined by the load capacity of the supporting structure (noggins recommended for stud walls) and use of appropriate fixings. 2) Basin is secured to wall with heavy duty L-shaped 32x32mm SHS stainless tube wall brackets. 3) Brackets are secured to basin by fixing to timber substrate with screws (not supplied). 4) An offset bracket is supplied to provide additional support to basin at rear. 5) Remove access panels under basins to fit off plumbing and wall fixings then replace panels. P traps not supplied.

Standard Basin Sizes:

1200mm - 2 bowls	2400mm - 4 bowls	3600mm - 6 bowls
1800mm - 3 bowls	3000mm - 5 bowls	4200mm - 7 bowls

