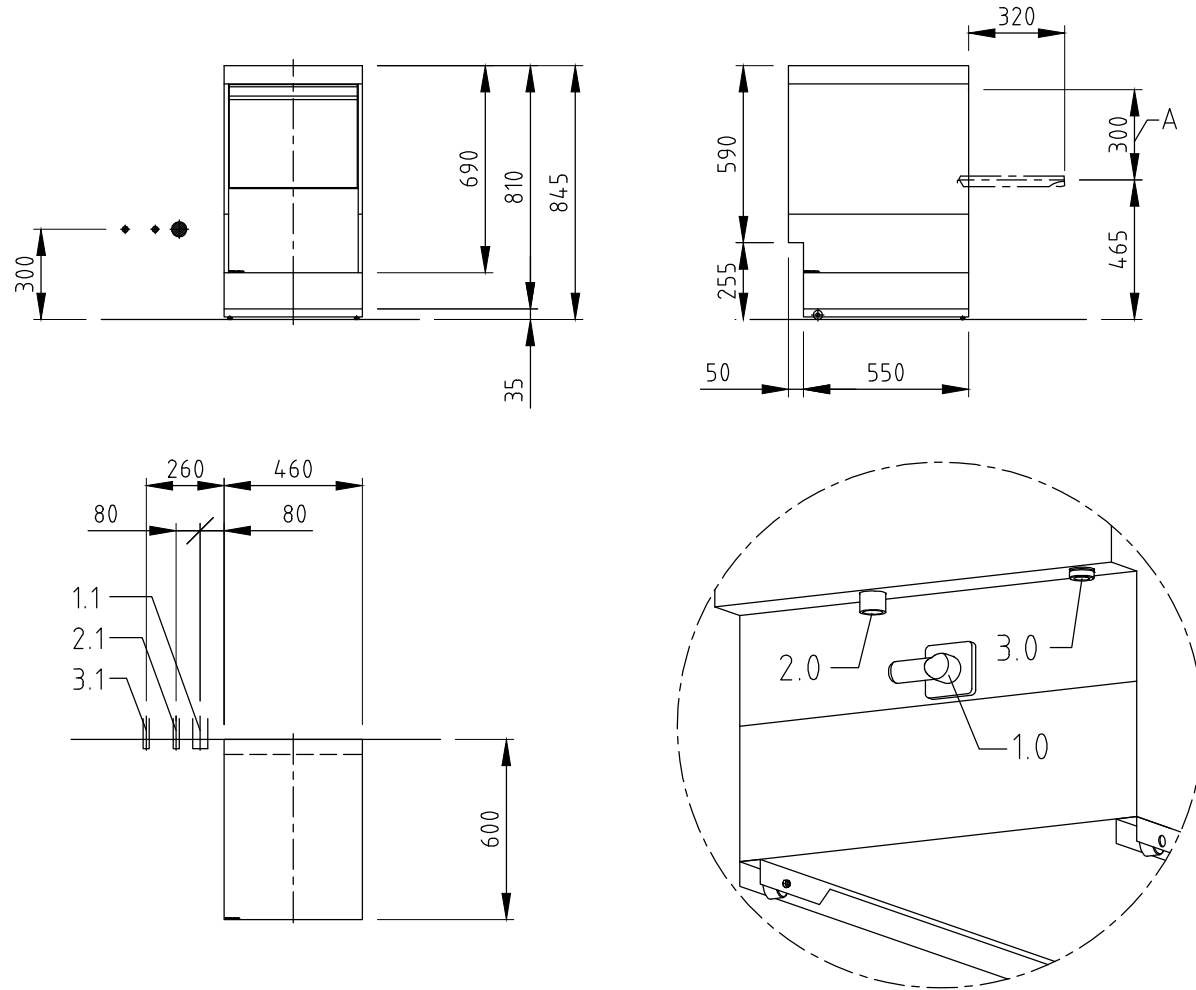



1.0	machine connection: Drain line hose fitted as odour trap in interior of machine	DN 22
1.1	drain (max. 700 mm above of the floor level)	DN 50
2.0	machine connection: fresh water line	G 3/4"
2.1	soft warm water 45 - 60°C	DN 20
	max. 0,54 mmol/l CaCO ₃ / 53,4 ppm/CaCO ₃ (max.3°GH) approx. water flow rate 0,22 l/s min. flow pressure: 250 kPa / 2,5 bar upstream of the solenoid valve, maximum pressure: 500 kPa / 5 bar stopcock and fine screen ≤ 25 µm	G 3/4 a
3.0	machine connection: electricity connecting cable	3G 2,5 mm ²
	electricity supply to the machine	1N PE 230V ~ 50Hz
3.1	nominal current / - capacity	13.4 A 2.8 kW
	⊕ Voltage equalising cable	Fuse protection: 15 A
	Electrical equipment suitable for supply voltage: 3N PE 380-415 V 50 Hz / 1N PE 220-240 V 50 Hz	
heat load of the wash room in case of 15 program cycles /h	total	ca. 1.0 kW
	perceptible	ca. 0.7 kW
	latent	ca. 0.3 kW
connecting cable, included but not installed		2,5 m
the position of the connection piping can also be mirror-inverted		
Options available on machine		
(A) Entry height		
Rinse agent pipe and suction lance (blue connector)		
Detergent pipe and suction lance		
Drain pump		
Plinth 120 mm		
Roller base 35 mm		



	MEIKO Australia-Pacific Pty Ltd Unit 4, 72 - 74 Gibbes Street Chatswood NSW 2067 TEL. +61-1300 367 730, Telefax +61-1300 656 420 E-MAIL: info@meiko.com.au	Revision Reference DISHWASHER STANDARD DRAWING / AUS	Type UPSTER U 400
	It is neither allowed to give this drawing without our permission to a third party for information or reproduction, nor may it be used for competition purposes. We reserve all rights! Please note: This document is only valid in conjunction with the conditions defined in the document "Important remarks"! Can be requested from the manufacturer or downloaded from Partnernet.	Drawing-No. S00008364	Order-No.
	Scale 1:25	drawn: 22.06.2017 m-iplan	