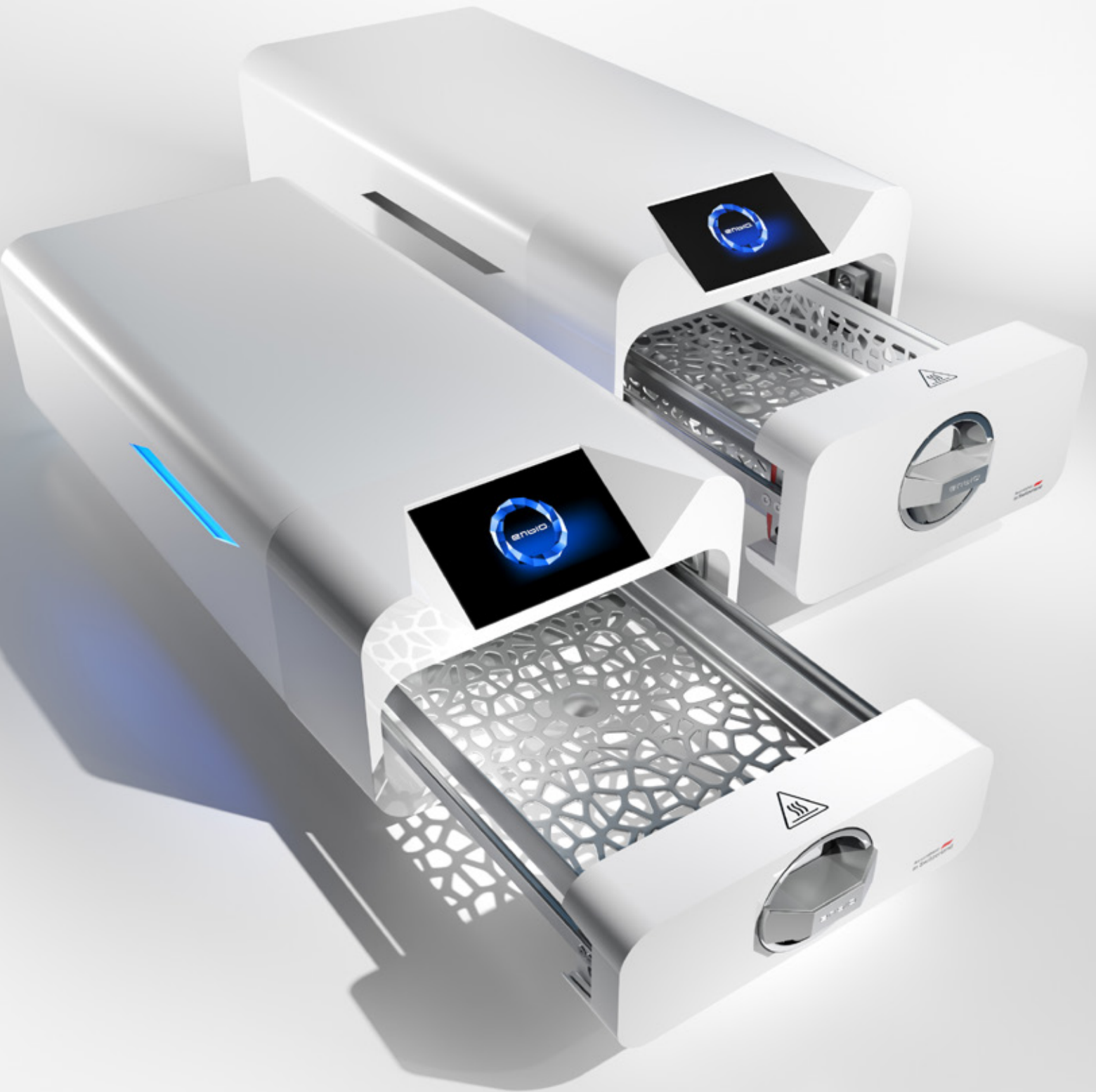


enbio.




Enbio^S + Enbio PRO
World's fastest autoclaves.
Class B.

Designed 
in Switzerland

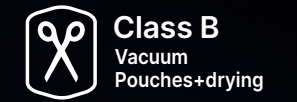
Another dimension. Same performance.

Enbio sterilizers are up to 6 times smaller and 3 times lighter than a typical class-B / vacuum autoclave. But when it comes to work efficiency, they keep up the pace.



	Typical autoclave	Enbio PRO	Enbio ^S
 Tool pouches / h	50	50	32
Vacuum / drying	✓	✓	✓

The new definition of sterilization speed.

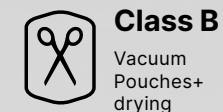


Time is a relative value. It flows differently under different circumstances.
But when you need to have your tools ready, you need them, well, FAST.
While other autoclaves might test your patience,

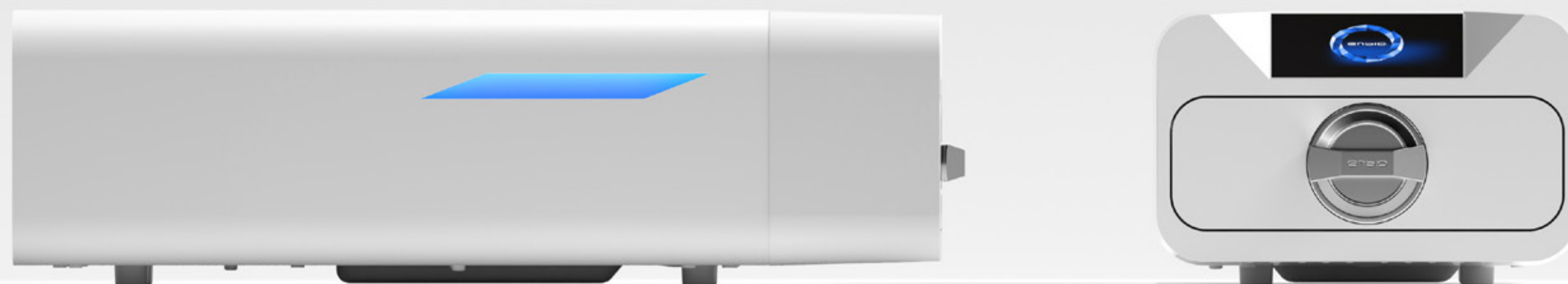
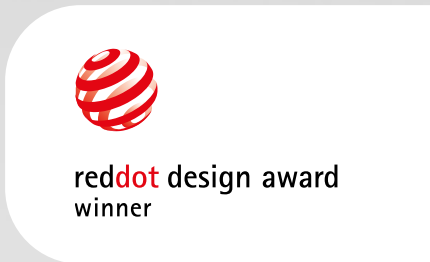


Enbio^S. Speedmaster.

Enbio S is compact to fit even a cramped space. Unbelievably short process times will save your procedure in emergency, or allow sterilization of the instruments as you go, between patients.



Unwrapped FAST / 134°C	Wrapped Class B / 134°C	Wrapped Class B / 121°C
7 min	15 min	30 min



Unit weight
15 kg

Capacity
Max. packages amount (circa) **8**
Max. recommended batch weight **0,5 kg**
Process chamber volume **2,7 l**

Pressure & temperature
Working pressure **2,1 Bar**
Max. pressure **2,3 Bar**
Max. process temperature **137°C**

Dimensions
Width **25 cm**
Height **16 cm**
Depth **56 cm**

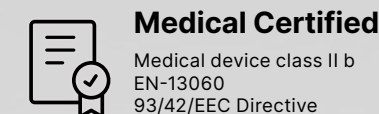
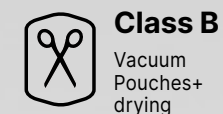
Electrical
Power supply **230V/50Hz**
Installed power **2250 W**
Max. power consumption **15 A**

Misc
Ingress protection level **IP20**
Data archiving **USB stick**
Water conductivity* **< 15 µS/cm**

* - demineralized water only

Enbio PRO. Small foot. Big space.

Enbio PRO is an ideal solution as a basic workhorse in a small practice. Superfast sterilization and room to hold most of the instruments, including popular implant cassettes.



Unwrapped FAST / 134°C	Wrapped Class B / 134°C	Wrapped Class B / 121°C	Wrapped / PRION Class B / 134°C
9 min	18 min	30 min	43 min



Unit weight
20 kg

Capacity
Max. packages amount (circa) **16**
Max. recommended batch weight **1,0 kg**
Process chamber volume **5,3 l**

Pressure & temperature
Working pressure **2,1 Bar**
Max. pressure **2,3 Bar**
Max. process temperature **137°C**

Dimensions
Width **25 cm**
Height **20 cm**
Depth **56 cm**

Electrical
Power supply **230V/50Hz**
Installed power **2250 W**
Max. power consumption **15 A**

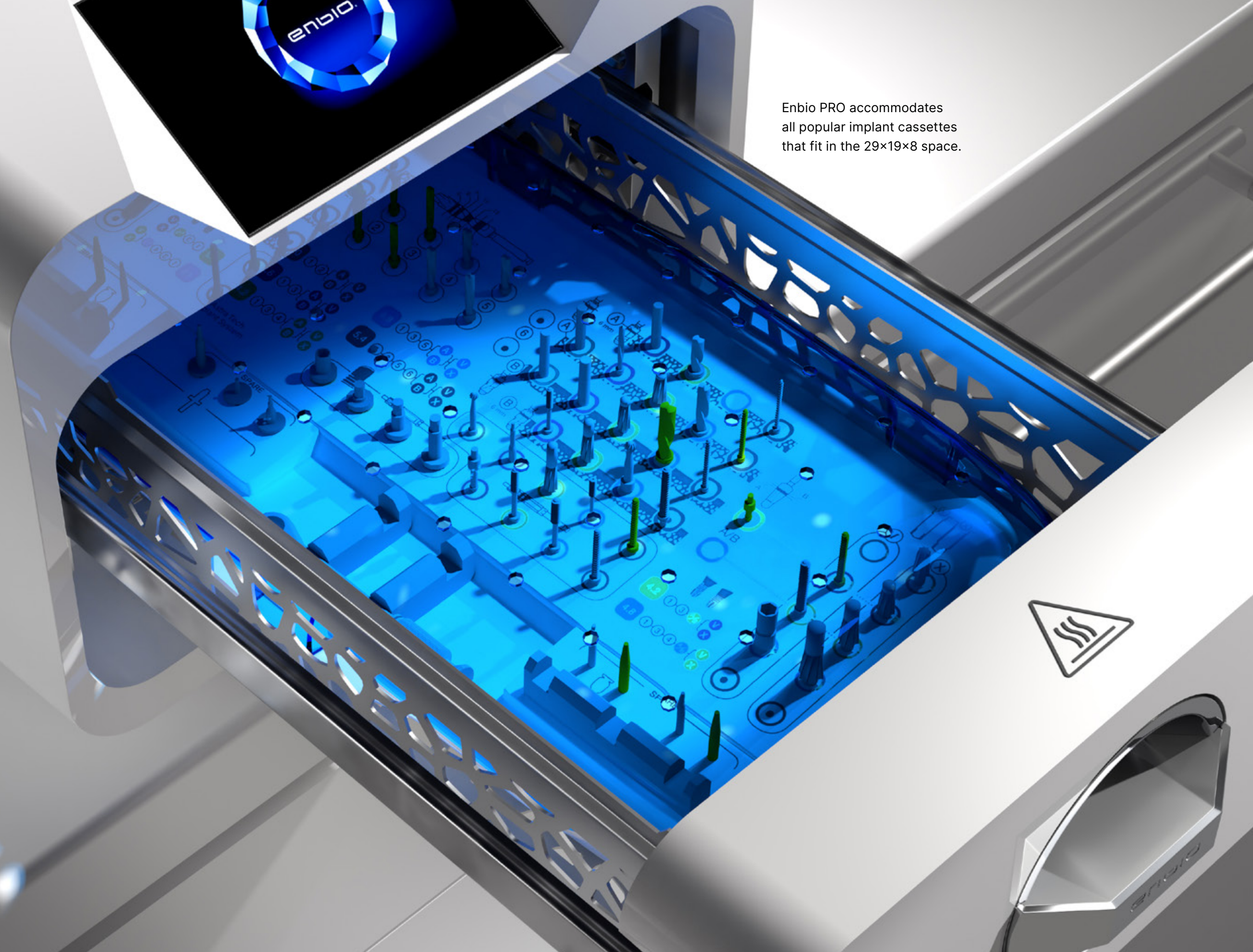
Misc
Ingress protection **IP20**
Data archiving **USB stick**
Water conductivity* **< 15 µS/cm**

* - demineralized water only

Implantology



Enbio PRO accommodates all popular implant cassettes that fit in the 29×19×8 space.



Enbio user manual.



1. Plug in
2. Choose program
3. Start working

Installation and operation of Enbio autoclaves does not require any special training.

Over 20 000 autoclaves sold in 5 years.

In just 5 years, Enbio's worldwide community has grown to over 20,000 users, who sterilize instruments in our autoclaves, for the complete safety of their customers and patients.





Designed
in Switzerland

Worldwide presence.

Enbio autoclaves are manufactured in the EU and distributed globally through logistics centers covering Europe, North America and the Middle East.

Distributed by:



DESIGNED WITH YOU IN MIND

Trade Central Business Park
Unit 12/37 Keilor Park Drive
Keilor Park Vic 3042

Ph: 1300 442 662
sales@icona.net.au
www.icona.net.au

