

AUTO-i 300

Premium Diagnostic Engineered for Professionals



AUTO-i 300

The Next Generation of Intelligent PC-Based Diagnostic Equipment

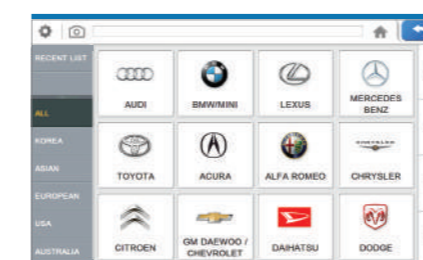
FEATURES

- COMPACT SIZE & SMART FUNCTION
 - Compact and Simple Design
 - Intuitive and Convenient Working Property
- PC BASED WIRELESS SCANNER
 - PC Based Multiple Use Available Sufficient Memory
 - Storage and Efficient Application Available
 - Auto Diagnosis Available Using Bluetooth Module
 - Wired Diagnosis Available Using USB Cable
- AUTO DIAGNOSIS SYSTEM
 - Auto Diagnostic Searching System on Available Vehicles
- ULTIMATE VEHICLE COVERAGE
 - OE Level Coverage of Asian, European, USA and Various Local Makers
- VEHICLE MAINTENANCE INFORMATION PROVIDED
 - A Help Function Support by Parts/Symptoms, Vehicle Wiring Diagram and Trouble Code Help Support

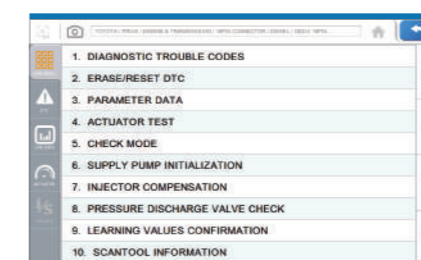
SPECIFICATION

AUTO-i 300			
Operating System	Windows XP, Windows VISTA, Windows 7, Windows 8	Operating Voltage	7.5~36V
Diagnostic Processor	Cortex M3 120MHz	Operating Temperature	0 to 45°C (32 to 113°F)
Connectivity	Bluetooth V.2.0	Storage Temperature	-20 to 70°C (-4 to 158°F)
	USB : 2.0	Protocols	ISO 9142-2, ISO 14230-2, ISO 15765-4, SAE-J1850 PWM
Power and Battery	Li-ion Polymer 2100mAh 1cell Battery		CAN ISO 11898, Highspeed, Middlespeed,
	Charging via 12V AC/DC Power Supply		Lowspeed and Singlewire CAN, K/L-Line High Speed Serial,
Power Consumption	2.4W		Flashing Code, Ethernet Protocol, Byte Protocol,
Dimension (WxHxD)	130mm(5.11") x 195mm(7.68") x 50mm(1.97")		Honda Diag-H Protocol, KWPT1281,
Weight	680g(1.50lb)		TP2.0, TP1.6, J2610(Chrysler SCI)

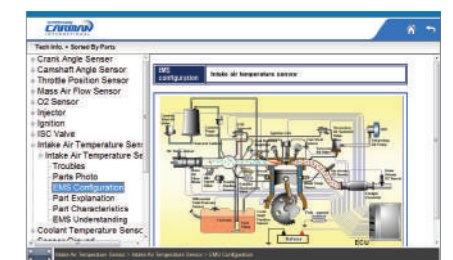
FUNCTIONS



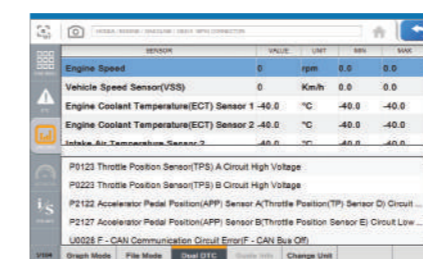
■ Brand Selection



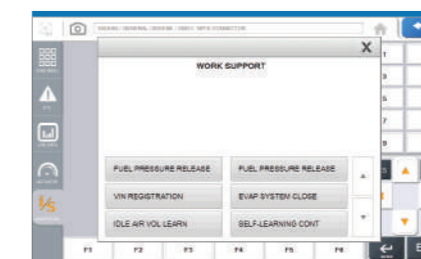
■ Menu Selection



■ Maintenance Info



■ Sensor-DTC Dual



■ Special Function



■ Sensor-Actu. Dual