

Success Case



Area:USA



Area:Peru



Area:Dominica



Area:South Africa



Area:Peru



Area:Finland

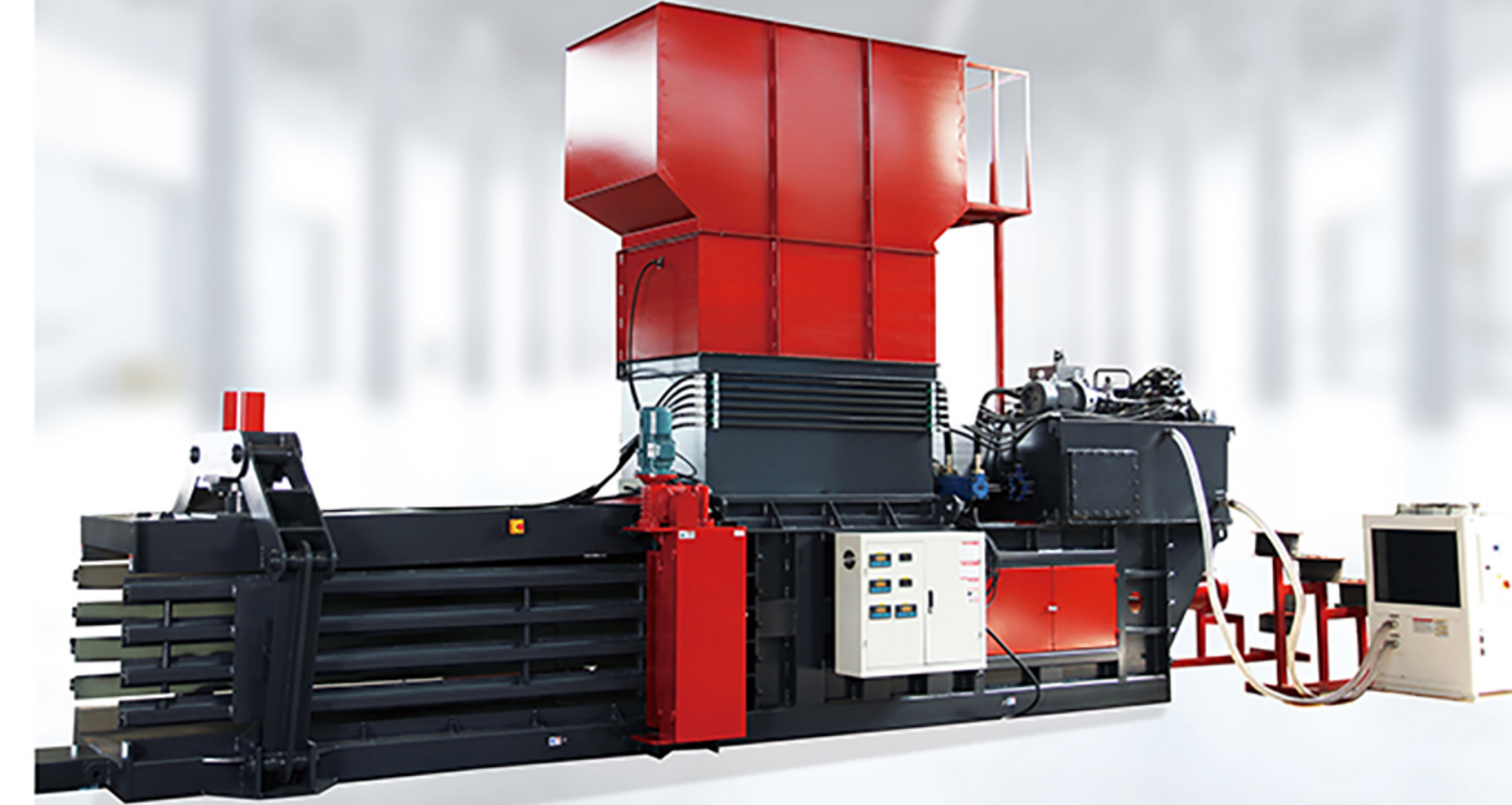
Model	HBA40-7272	HBA60-11075
Press Force (tons)	40	60
Motor Power (kw)	22	22
Bale Size(mm)	720×720×L	1100×750×L
Bale Weight (OCC) (kg)	200-500	400-700
Feed Hopper Size (mm)	1500×640	1500×1020
Capacity (OCC) (tons/h)	1-3	3-5
Tying Wires	4	4

Model	HBA80-11075	HBA100-110110
Press Force (tons)	80	100
Motor Power (kw)	37	45
Bale Size(mm)	1100×750×L	1100×1100×L
Bale Weight (OCC) (kg)	600-900	800-1100
Feed Hopper Size (mm)	1500×1020	1800×1020
Capacity (OCC) (tons/h)	4-8	7-12
Tying Wires	4	5

Model	HBA120-110125	HBA150-110125
Press Force (tons)	120	150
Motor Power (kw)	55	90
Bale Size(mm)	1100×1250×L	1100×1250×L
Bale Weight (OCC) (kg)	900-1200	1000-1300
Feed Hopper Size (mm)	2100×1020	2400×1020
Capacity (OCC) (tons/h)	9-13	14-18
Tying Wires	5	5

ENERPAT®

Global Waste Disposal System Supplier



AUTO HORIZONTAL BALER



Email: info@enerpatgroup.com
 Email: enerpatcompany@gmail.com

Add: No 2, Xintai Road, Changqing Industry Zone, Rugao, Nantong, Jiangsu, China



ENERPAT GROUP UK
 ENERPAT UK. CHINA PRODUCTION BASE

Product Application



Waste paper



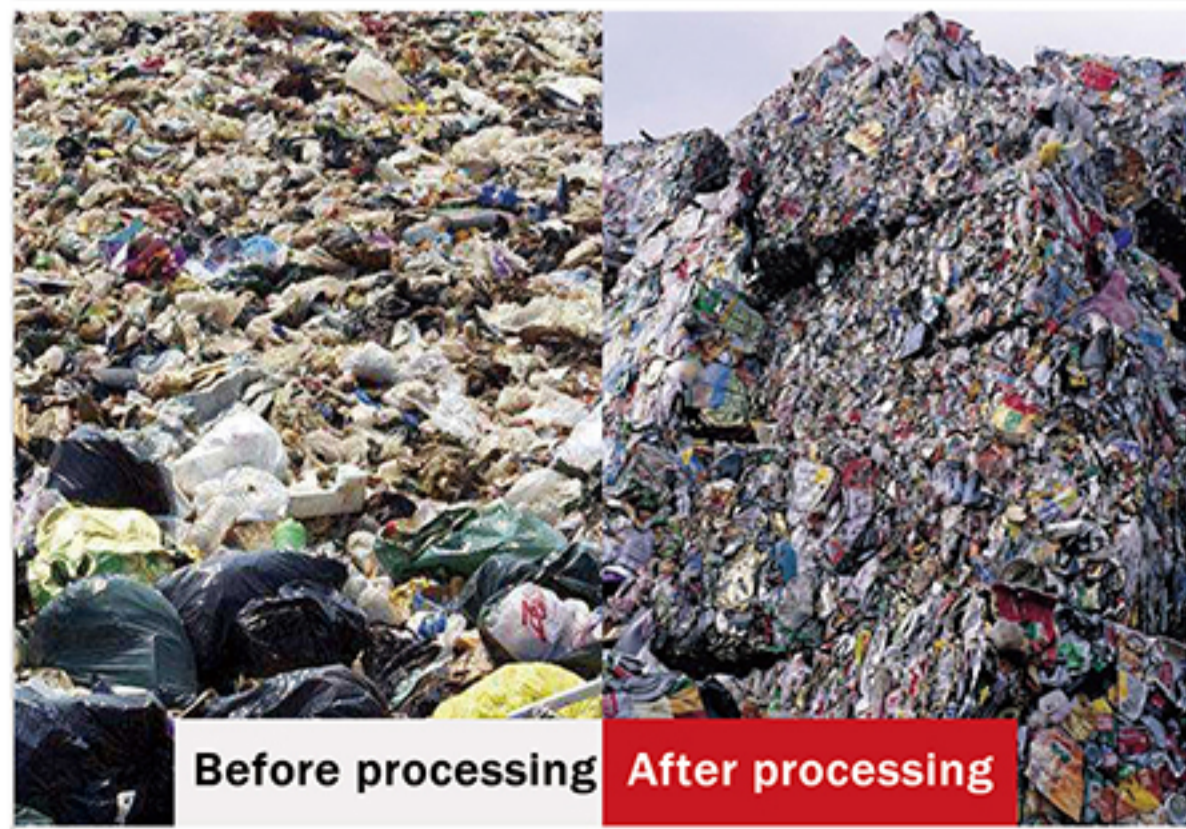
Waste plastic



Crop



Woven bag

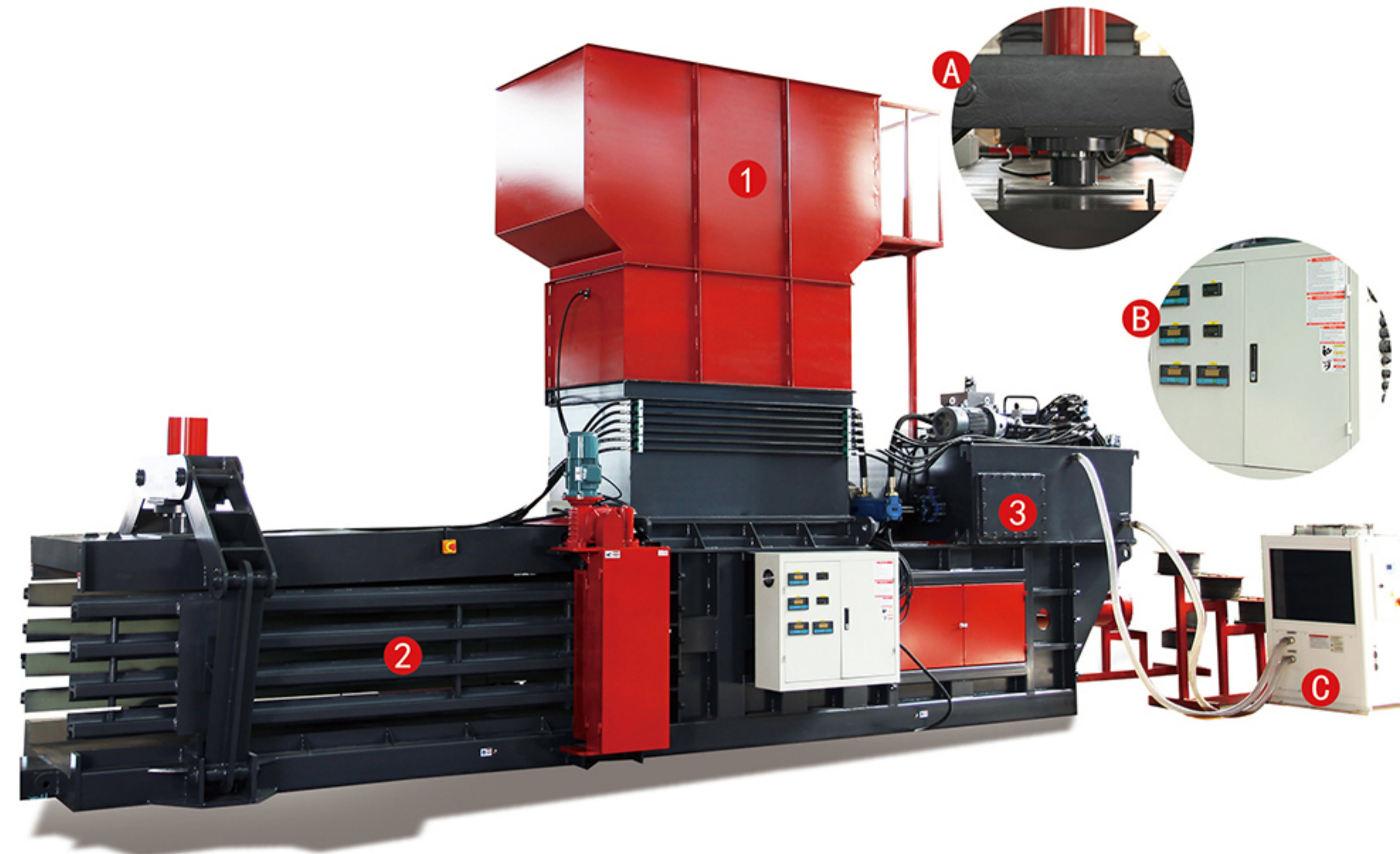


Daily waste



Industrial waste

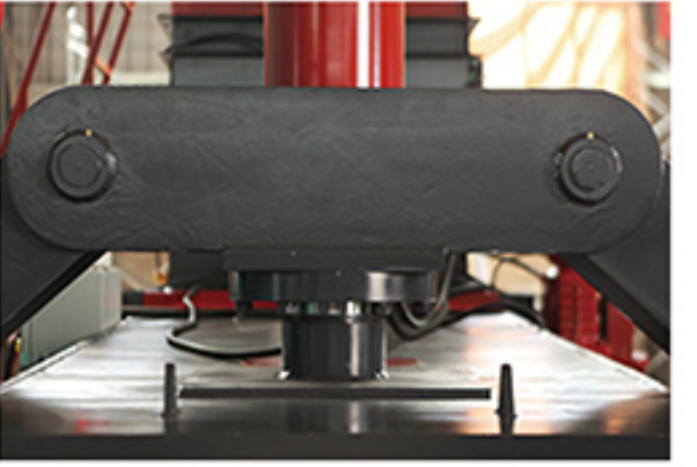
- ① Feeding Hopper
- ② Platen mechanism
- ③ Hydraulic System
- Ⓐ Three-way Compression
- Ⓑ Electric System
- Ⓒ Air Conditioner Cooling System



- Our cardboard fully automatic horizontal balers are an automated version of our horizontal balers, able to process high volumes of recyclable materials such as paper, cardboard and plastics, ideal for companies with a large amount of daily waste to handle.
- Materials are pressed into stable, high-density bales by our fully automatic balers, which are easy and safe to stack, requiring less storage space. The length and weight of bales is selectable, with bales being tied automatically when the selected length is reached.
- Our fully automatic horizontal balers are CE marked and designed with customer requirements in mind, making your waste management a simple and cost efficient process.

Three-way Compression

- The three-way compression mechanism is equipped with three hydraulic cylinders, which are controlled in two directions and change in linkage with the pressure of the main compression cylinder.
- The three-way compression design ensures that the block is well formed and the finished product has a high density



Hydraulic System

- Europe Design hydraulic system, efficiency and stable
- International Top Brands valve and pump
- Air Conditioner Cooling System which accept machine 24/7 working



Electric System

- The main electrical components are selected from the French Schneider brand
- The PLC brand of the equipment is Siemens European CE design standard, in line with EU safety requirements



Automatic Baling System

- German automatic strapping technology, stable and efficient
- The core components are imported, reliable and durable

