

# G400 Undercounter Glasswasher

Technical Specifications



**CLASSEQ**  
Warewashing Made Simple.

# G400

Compact, front loading and with simple two button controls for effortless, consistently clean results, the G400 is the perfect glasswasher for where space is limited.

The G400 is an easy to operate glass washer with a 350mm x 350mm basket that holds 16 pint-sized glasses. With its two minute wash cycles, this machine is capable of cleaning up to 480 pint glasses per hour.

With a digital LED display, intuitive colour coded lighting and universally recognised symbols, this machine is incredibly easy to use, plus features performance enhancing customisations through its advanced settings modes. Additionally, its clever software constantly monitors wash cycles, temperatures, chemical usage and any errors giving valuable data which is used to improve operational efficiencies.

The G400 comes as standard with a drain pump along with chemical pumps.



# Warewashing made simple:

**UK Manufactured**  
Our machines are Made in Britain (Staffordshire).

**2 Minute Cycle Time**  
The G400 2 minute cycle allows for maximum output without compromising wash quality.

**User Friendly**  
We've maximised our user experience through, two simple button controls.

**Advanced Customer Features**  
Adjust rinse aid and detergent settings and priming of chemical pumps.

**Colour Coded Display**  
Amber flashing - Machine heating  
Blue - Machine in cycle  
Green - Machine ready

**Operational Data monitoring**  
Our machine constantly measures all cycles, heating and errors providing useful data for improving efficiencies.

## Machine Features:

1 400mm x 400mm basket	2 Built-in chemical pumps	3 Energy saving standby mode	4 Removable basket guides
5 Dual wash filter system	6 Temperature interlock - guarantees hot rinse	7 Assisted self-clean	8 Noise reducing double skinned door

### Hydraulic specifications

Water supply connection	G3/4" (3/4" BSP)
Minimum allowed supply water pressure	2.0 bar
Required water flow rate	11 L/min
Minimum incoming water temperature	4°C
Maximum incoming water temperature	55°C
Pumped drain height (from machine base)	540 mm

### Electrical specifications

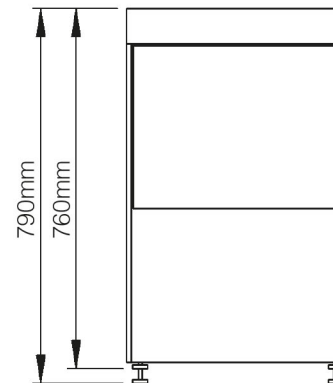
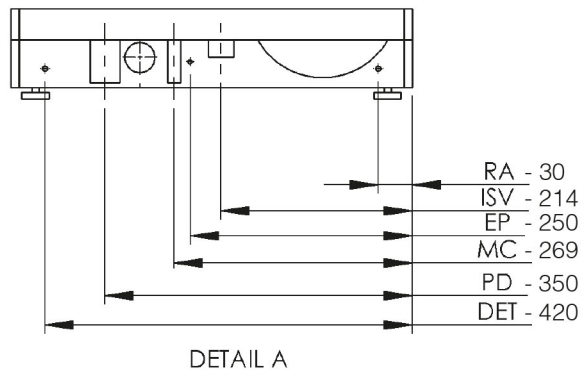
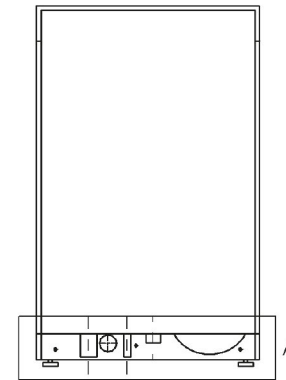
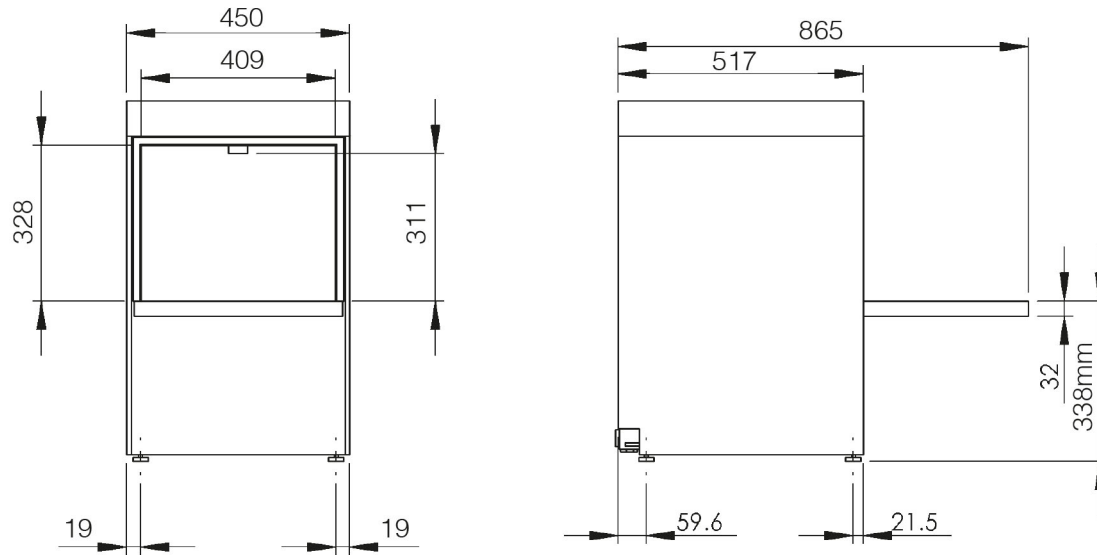
#### Standard Set-up

Amps Required	15A (1 phase)
Standard Operating Voltage	220-230V / 1N~ / 50Hz
Total Connected Load	3.18kW

#### Performance

Wash tank element	2.00kW
Rinse tank element	2.60kW
Wash tank capacity	10 litres
Rinse tank capacity	6.5 litres
Rinse water consumption at 3 bar	3.00 L/cycle
Theoretical maximum racks/hours	30
Wash tank temperature	55°C
Rinse tank temperature	82°C
Wash pump power	0.25 kW
Rinse pump power	N/A

# Mechanical Specifications



## Additional Info:

Wash water temperature	55°C
Glass washer rinse temperature	82°C
Noise level	Under 70dB
Empty weight	33.5kg
Fully Loaded weight	50kg
Packed weight	43.0kg

## Dimensions (mm):

450 (W) x 760 (H) (790 max) x 517 (D)

Description	Symbol	Radius from machine (m)
Rinse aid tube	RA	3
Inlet solenoid valve	ISV	1.8
Mains electrical cable	EC	1.3
Pumped waste water outlet	PD	1.5
Equipotential bonding stud	EP	-
Detergent tube	DET	3

Please Note: All dimensions in mm

## Contact:

Tel: +61 2 9645 3221

Email: sales@winterhalter.com.au

Unit 4, 74 Helen Street,

Sefton, nsw, 2162

www.classeq.com.au

**CLASSEQ**  
Warewashing Made Simple.