



ISTOBAL T'WASH10
On the car-wash cutting edge

INTUITIVE CONTROL



Touchscreen control panel, with the same design, access and iconography as in rollovers. A user-friendly environment that makes work easier to operators and engineers at the wash facility.

WASH QUALITY



The wash module includes standard features such as "soft starters" and "vertical brushes tilt". In addition, its controlled travel on rails facilitates an overlapping front & rear scrub, ensuring effectiveness.

FLEXIBILITY AND EFFECTIVENESS



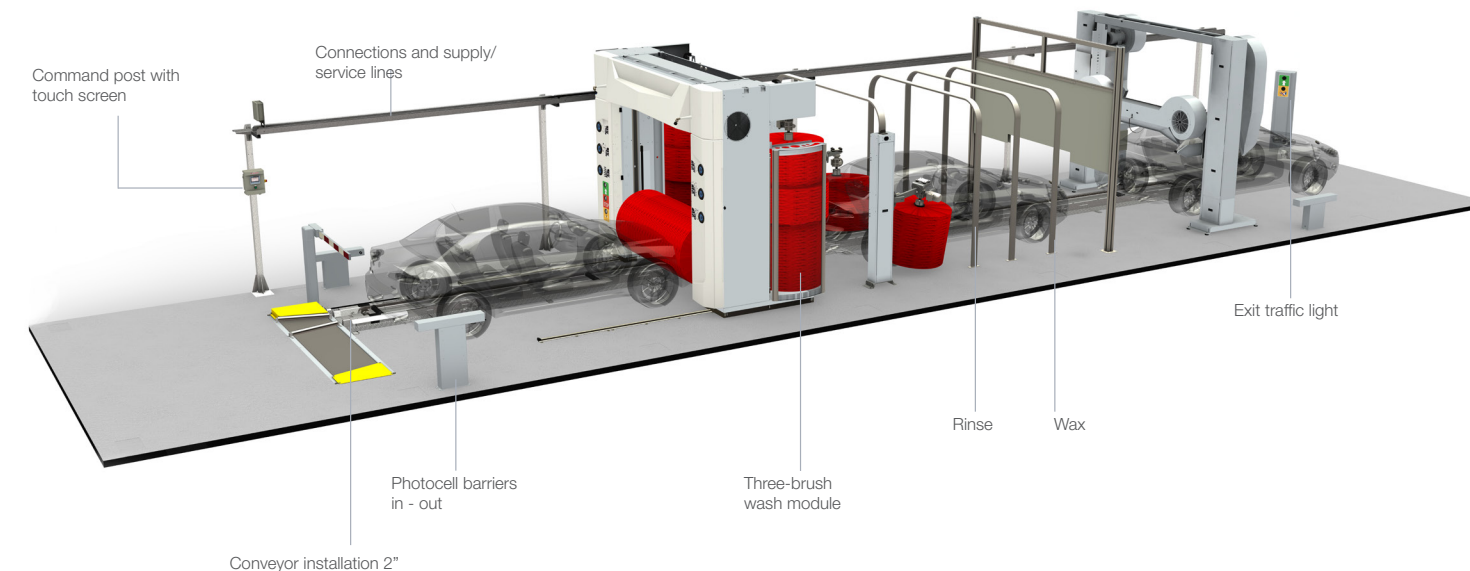
A variety of designs, fairings and lights are available for each facility to be unique. The wash module has the advantage of incorporating different options and programs to improve productivity without additional installation footage.

The new wash and dry tunnel, T'WASH, combines in the same model the versatility of rollovers with the productivity typical of wash tunnels.

This new development ensures a maximum return in facilities where every square metre counts. Starting from facilities as long as 9.3 meters only, extensions and additional wash and wax modules can be incorporated, up to 15.8 meters maximum.

Our R&D&i department has succeeded in developing a powerful software that allows users to coordinate rollover operation with the movement of the conveyor installation on rails, thus obtaining a perfect wash and dry with a large output.

BASIC EQUIPMENT



DIFFERENT SIZES, DIFFERENT SPACES

- **9.3 metres:** Three-brush wash module with wheelwash + final rinse + waxing arch + dry
 - **10.9 metres:** Wax/dry separation curtain can be added
 - **12.5 metres:** Autonomous vertical brushes can be added
 - **14.1 metres:** Supports all possibilities
 - **15.8 metres:** More space for better wax application
- * TWASH capacity: up to 30 vehicles per hour

AUTONOMOUS VERTICAL BRUSHES



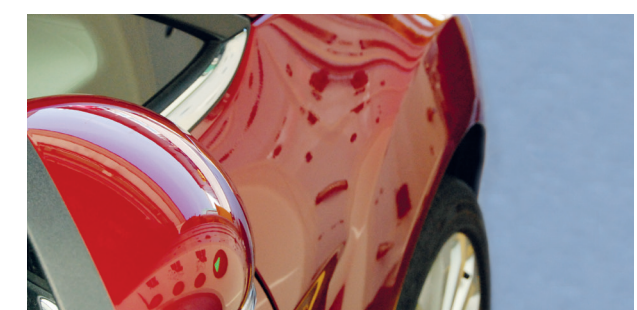
In installations from 12.5 meters, two additional vertical brushes can be installed to offer added value to the facility and higher wash quality. This option can be adapted to two different wash heights, 0.8 m and 1.6 m.

EFFICIENT DRY



The dryer module is composed of 4 turbofans with 4 kW power each, working at low speed (1500 rpm) and with a high airflow rate for performance. The horizontal nozzle with its unique 3D design offers an exceptional dry quality with any type of vehicle.

HIGH SHINE ACTIVE FOAM



This new option allows for a special active foam bath in the first washing steps. It gives an incomparable shine and protects the paintwork of the vehicle from the daily attacks of elements in the air, making your car look as if it had just been washed for a longer time.