

sonologic™

# EBit 50



Caring for life through innovation.™

# Ergonomic Design

I need a portable, light-weight ultrasound which is easy to go, easy to diagnose, easy to operate with sufficient measurement packages.



- Independent angle 15" LED ( 0° - 30° tilted )
- Lightweight ( 7.5Kg / 16.5lbs)
- Dual transducer ports ( Built-in )
- Probe holders
- Removable battery , 120 minutes in active mode

- Theft-proof lock
- Dediceted adapter Space
- Printer socket
- Accessory box
- Trolley height adjustable (Three levels available)

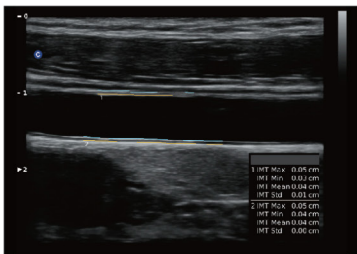


# For Vascular & MSK



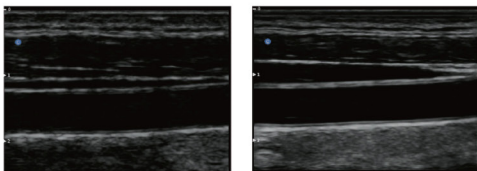
## Auto IMT

Automatically traces the intima, and measures the thickness of the intima. This allows you to measure the intima faster, more easily and more accurately.



## Q-image

These innovative algorithms have strengthened the image enhancement results significantly. Advanced chipset is used to ensure fast frame rate.

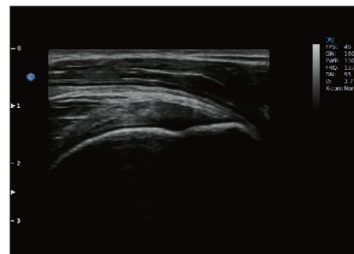


OFF

ON

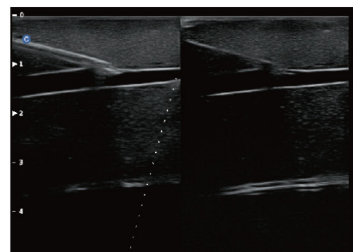
## Up to 18MHz High Frequency Linear Probe

Our high frequency linear probe provides unparalleled detail resolution and superior contrast resolution with up to 18 MHz imaging frequency.

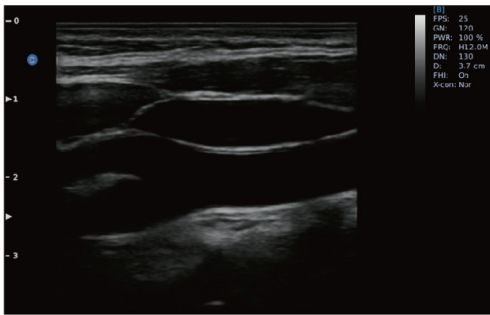


## Super Needle

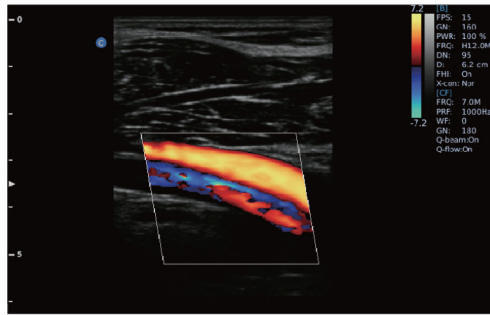
With Super Needle, clinicians can see needle inside tissue more clearly during medical procedures. Needle angle up to  $\pm 30^\circ$



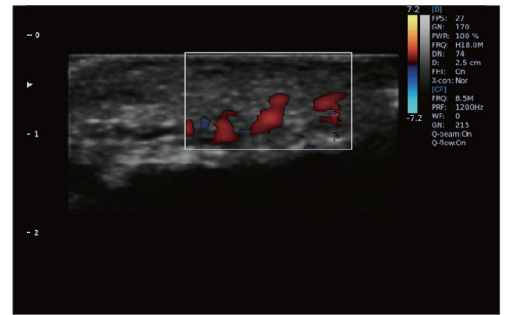




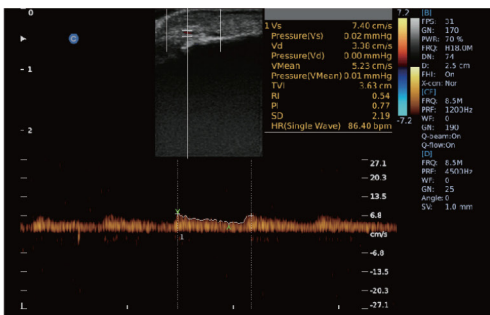
CCA, ICA, ECA, B Mode



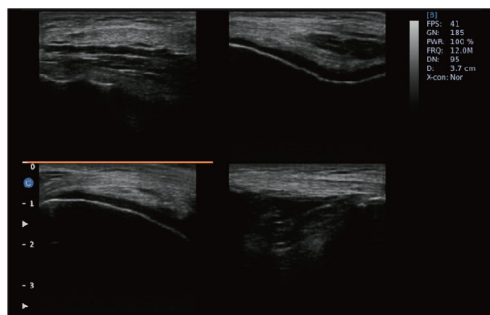
Popliteal Artery and Vein



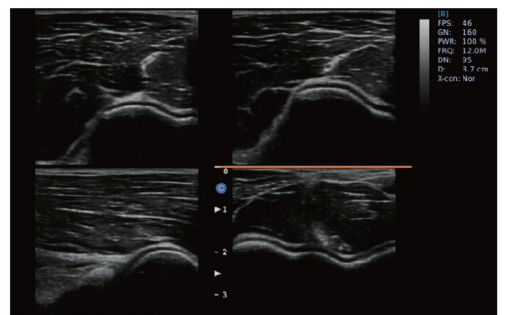
Fingertips Vessel, C Mode



Fingertips Vessel, PW Mode



Knee, 4B Mode

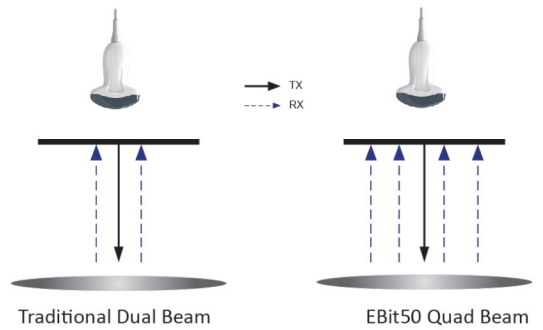


Elbow Joint, 4B Mode

# General Imaging

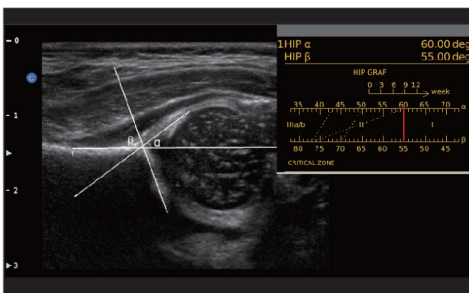
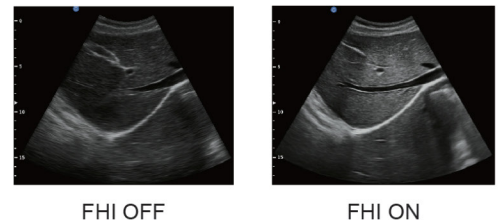
## Q-beam

- Compared to the traditional dual-beam former on most ultrasound machines, the EBit50 uses quad-beam technology for ultrasound signal receiving.
- Doubles the volume of signals received from traditional methods, increasing image resolution and generating more accurate images.
- Produces higher frame rates, ensuring better diagnostic confidence and efficiency, especially for moving organs.

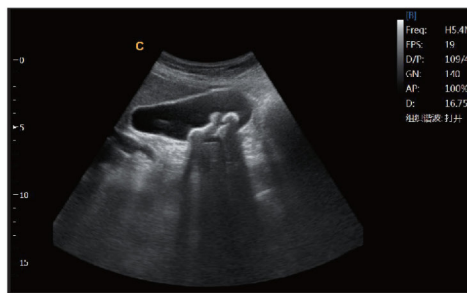


## FHI

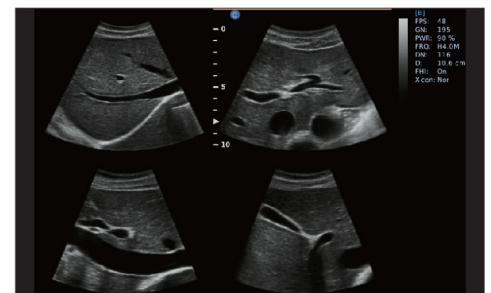
- FHI is an innovative harmonic imaging technology that uses multiple transmission and receiving methods based on the patients' size and weight. This allows the EBit to maintain image resolution when imaging larger patients.
- Traditional Tissue Harmonics and Phased Harmonics compromise image quality and resolution when penetration is increased.
- Chison's FHI technology greatly improves diagnostic abilities and clinical confidence in larger, difficult-to-image patients.



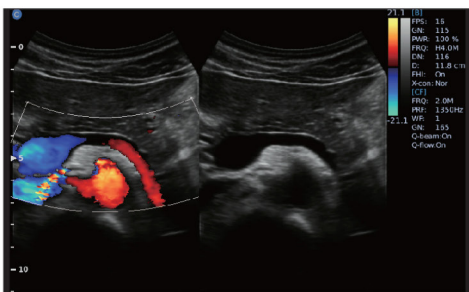
HIP Graf



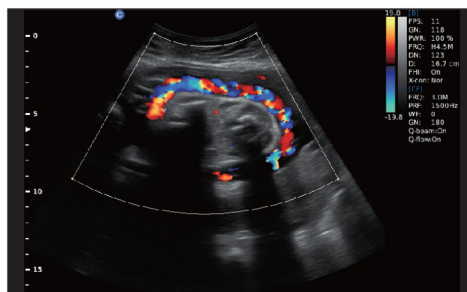
Gallbladder stone, B Mode



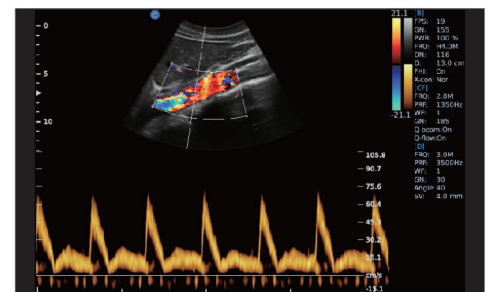
Abdomen, 4B Mode



Pancreas, B/BC Mode



Umbilical cord, C Mode



Aorta Artery, PW Mode



## Specifications

- B, 2B, 4B, B / M
- CFM
- PW
- CPA, DPD(Direction Power Doppler)
- Duplex, Triplex
- Trapezoidal
- Chroma B / M / PW
- Super Needle ( option )
- 2D steer
- Auto IMT
- HIP Graf
- DICOM 3.0 ( option )

## Image Processing Technologies

- FHI
- Q-beam
- Q-flow
- Q-Image
- X-contrast
- SRA
- Compound Image

## Comprehensive Applications

- OB/GYN
- Urology
- Pediatric
- Radiology
- Internal Medicine
- Small Parts
- General Imaging
- Vascular
- Intensive Care
- Emergency
- MSK
- Point of Care

## Accessories

- Footswitch
- Trolley
- Suitcase
- Video Printer
- PC Printer



2.0 - 6.8 MHz  
Convex C3-E



4.0 - 15.0 MHz  
Linear L7-E



7.0 - 18.0 MHz(With FHI)  
Linear L12-E



4.0 - 15.0 MHz  
Linear L7W-E



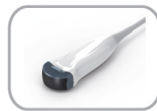
4.0 - 12.0 MHz  
Transvaginal V6-E



4.0 - 15.0 MHz  
Transvaginal V7-E



4.0 - 15.0 MHz  
Trans Rectal L7R-E



2.0 - 6.8 MHz  
Micro-Convex MC3-E



4.0 - 12.0 MHz  
Micro-Convex MC6-E



4.0 - 10.7 MHz  
Micro-Convex MC5-E

**sonologic**<sup>™</sup>

1300 855 921 | [sonologic.com.au](http://sonologic.com.au)



Caring for life through innovation.<sup>™</sup>