

DIECI
AUSTRALIA

POULTRY PRO | 30.7





POULTRY PRO ENGINEERED FOR POULTRY AUSTRALIA

The characteristics of Dieci products can be summarised in three concepts that have always been the hallmark of each vehicle: **technology**, **reliability** and **durability**.

We work every day to evolve our machines, adopting the best solutions based on research, advice and experiences with our customers. Offering a range of telehandlers designed to suit Australia's diverse agricultural environments.

Designed to specifically meet the needs of the industry with a number of features that make the Poultry Pro ideal for use in hot poultry sheds.

Whether you're picking up birds or cleaning out sheds, the Dieci **Poultry Pro** is guaranteed to help you get the job done.

Built tough and reliable with great power, manoeuvrability, excellent handling, and sound proofing for absolute comfort. The Poultry Pro can be fitted with a full range of accessories, making it an incredibly versatile machine.

ABSOLUTE COMFORT: MADE IN ITALY, DESIGNED FOR AUSTRALIA

Dieci telehandlers have always been a combination of **comfort** and **functionality** which makes us stand out all over the world.

Compact Design

Categorised by high fluidity and precision, the Poultry Pro allows operators to navigate more efficiently. Its compact design lets it fit into sheds and under gantries, ideal for feeding and watering birds in specially protected halls.

Specially Designed Air Conditioning

Australian made air conditioning featuring in cabin filtration, auto reversing fan, which activate automatically every 20 minutes, and roof mounted condensing fans.

Temperature Monitoring System

The digital temperature monitoring system includes a high temperature cut-out for precise control and safety, automatically shutting off if temperatures exceed safe levels.

Inching Pedal

An essential control that allows travel speed to momentarily slow down or come to a stop while still offering maximum power to boom functions to increase precision and productivity for delicate operations.

4-in-1 Joystick

The boom can be fully operated by the hydraulic control distributor-single joystick with proportional and simultaneous controls which also incorporates FNR, for easier and more practical direction control.

Maximum Safety

The ROPS-FOPS approved cab is designed with a safety cell to provide maximum safety to the operator at all times. Dieci telehandlers comply with AS1418.19 / 10896.1.

Deadman sensor, combined with operator presence sensor in the seat, prevents accidental operation.

The Load Limiter Device analyses vehicle stability in real time and inhibits any aggravating movements when the pre-set safety limits are reached.



Poultry Pro 30.7

6.35m
Max Reach

3,000kg
Max Capacity

98hp / 73.4kW
Nominal Power

Advanced Telescopic Boom

Made of high resistance steel, while load sensing and flow sharing distributors allow for more simultaneous movements during operation.

Hydrostatic Transmission

Complete with a servo controlled 2 speed gear box and constantly varying hydrostatic drive, which guarantees top-end speed and low-end torque.

Top Level Performance

Superior performance, thanks to the boom which achieves the perfect balance between size and strength. Incredibly responsive and totally free of any uncontrolled movement thanks to the central position of the boom.

146° Bucket Angle Rotation

Specially designed to increase the operating arc, allowing for more efficiency when emptying the bucket.

Total Visibility

The large, curved windows of the cab offer a complete 360° outside view with uninterrupted visibility.

Reversing Fan

Improves airflow to maintain a clean engine bay. Keeps it clear of dust and debris, which also contributes to a lower running temperature.

LED Lights

Cut through the fine air-borne particles so the operator has clear vision to complete the task at hand. Equipped with 4 LED lights on the front and rear of the cab and one work light on the boom head for maximum visibility.

Comfort & Ease of Access

With soundproofing, an adjustable steering wheel (height and depth), storage compartments and various accessories such as the air suspension seat, enable operation in total comfort.



TECHNICAL DATA

PERFORMANCE	
Maximum capacity	3,000 kg
Maximum lifting height	6.35 m
Maximum horizontal extension	3.70 m
Fork swiveling angle	146 °
Pull-out force	5,700 daN
Towing force	5,500 daN
Maximum climb angle	40 %
Unladen weight	6,100 kg
Maximum speed	35 km/h

ENGINE	
Brand	Kubota
Nominal power	98 hp / 73.4 kW (@ 2,600 rpm)
Operation	4-stroke / diesel
Injection	Mechanical
Number and arrangement of cylinders	4, vertical inline
Displacement	3,769 cm ³
Emission standard	Stage IIIA/Tier 3
Cooling	Liquid
Intake	Turbo compressor

TRANSMISSION	
Type	Hydrostatic transmission with variable displacement pump
Hydraulic motor	Hydrostatic with continuous automatic adjustment
Reversal	Electro-hydraulic
Inching control	With hydraulic pedal for controlled forward movement
Gearbox	Servo-controlled 2-speed

HYDRAULIC SYSTEM	
Hydraulic pump type	Gear pump for power steering and movements
Hydraulic pump capacity	115 l/min
Maximum operating pressure	24.5 MPa (3,553 psi)
Boom hydraulic sockets	With quick couplings
Distributor control	4-in-1 joystick with integrated FNR (with deadman capacitive sensor)
Distributor type	Hydraulic distributor-single joystick with proportional and simultaneous controls

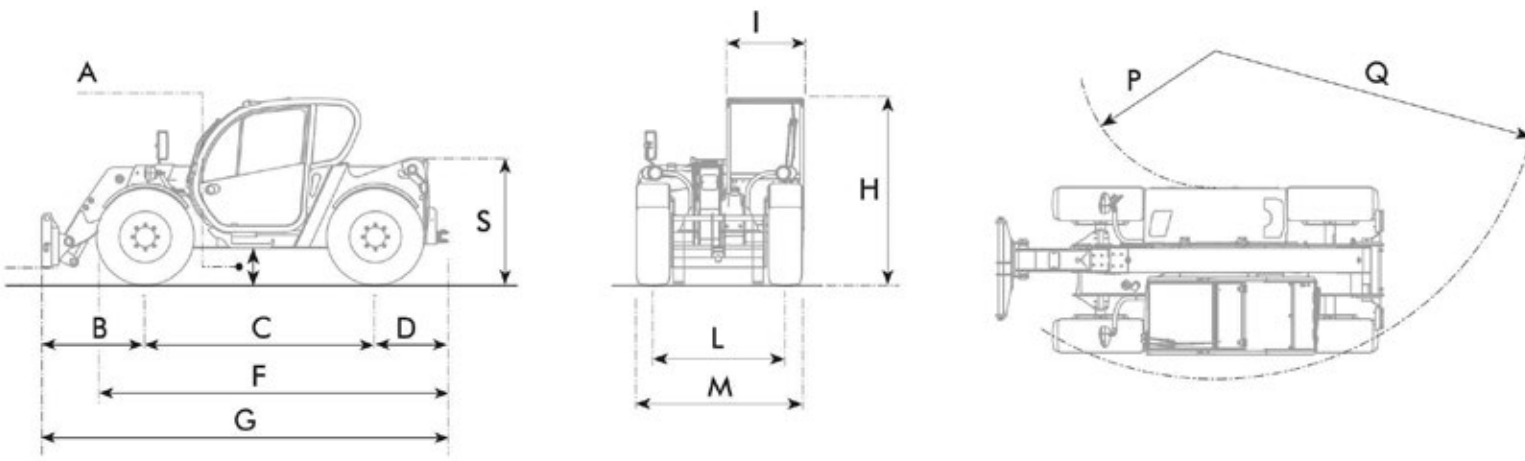
TANK CAPACITIES	
Hydraulic tank	140 l
Diesel tank	100 l

DIFFERENTIAL AXLES	
Steering axles	2 steering, with 4 epicyclodial reduction gears
Type of steering	4 wheels / transversal / 2 wheels
Service brake	Oil bath with servo brake on front axle
Park brake	Negative actuation with electrical control

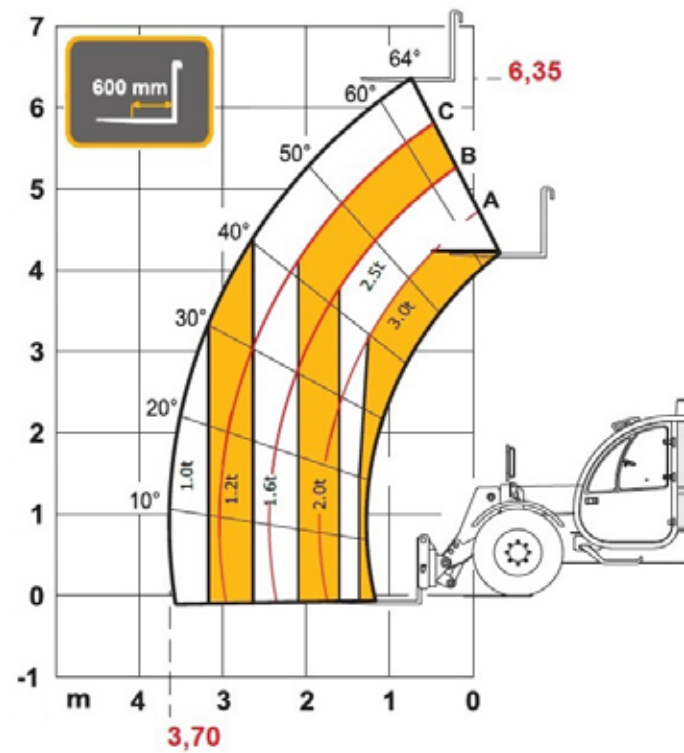
TYRES	
Size	12.5x18"

POULTRY PRO 30.7

DIMENSIONS	
A	400 mm
B	1,315 mm
C	2,800 mm
D	650 mm
F	3,990 mm
G	4,765 mm
H	2,040 mm
I	940 mm
L	1,600 mm
M	2,000 mm
P	1,670 mm
Q	4,000 mm
S	1,544 mm



LOAD CHART



SPECIAL FEATURES	
Australian developed air conditioning system featuring cabin filtration, auto reversing fan, roof mounted condensing fan and easy clean condenser	
Battery isolation switch	
4 x LED work lights on roof	
1 x LED work light on boom head	
Tow hook	
Marine relays and circuit breakers in the engine bay	
High capacity hydraulic tank breather	
Extended and raised axle and drop box breathers	
Vortex pre-cleaner	
Engine temperature monitoring system (Watchdog)	
Reversible cooling fan	
Extra large open core radiator (5.5 fins/in ²)	
Canvas seat cover	
Bluetooth radio and aerial	
Air suspension seat	



NEW SOUTH WALES

Sydney Branch

1/5 Melito Court,
Prestons, NSW 2170

WESTERN AUSTRALIA

Perth Branch

32 Allott Way,
Maddington, WA 6109

VICTORIA

Melbourne Branch

169 Studley Court,
Derrimut, VIC 3026

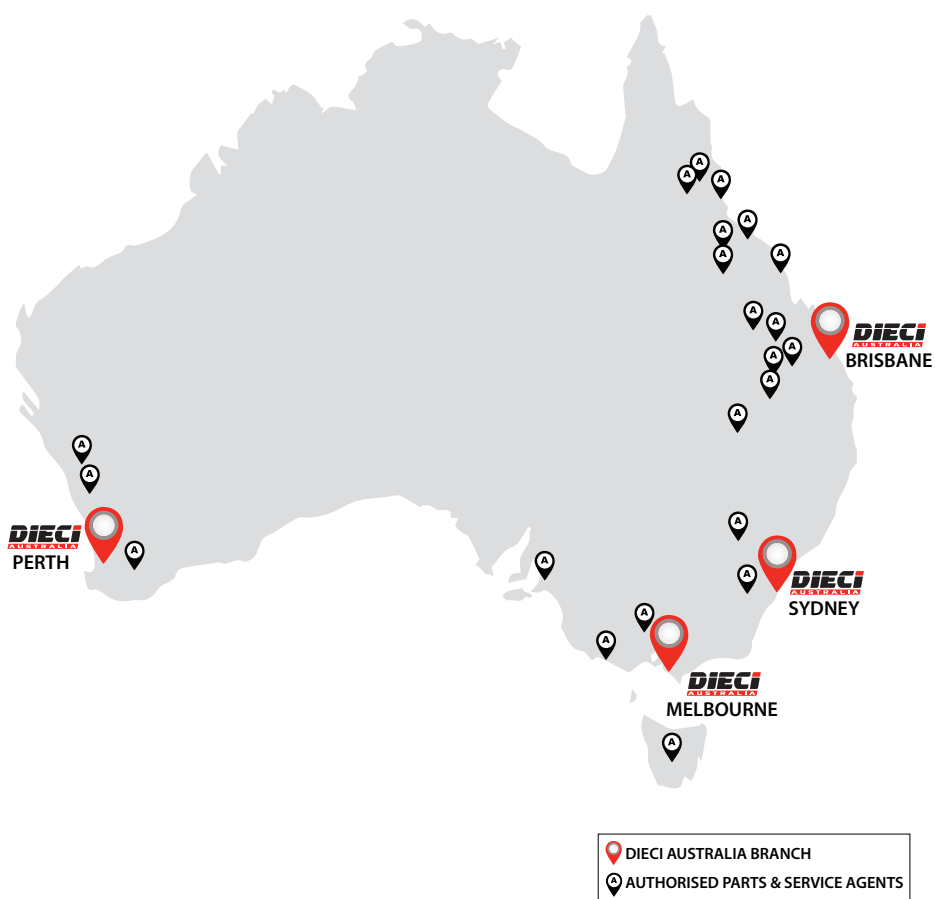
QUEENSLAND

Brisbane Branch

1/7 Australand Drive,
Berrinba, QLD 4117

Brisbane North Branch

69 Griffin Crescent,
Brendale, QLD 4500



www.dieciaustralia.com.au | ph: 1300 888 479 | sales@dieciaustralia.com.au

Distributed by Dieci Australia

Illustrations and photos show the standard international models and may or may not include optional equipment, accessories, customer installed or modified parts, optional parts and all standard equipment with some differences in colour and features. Machine specifications are subject to change without notice and additional load charts and machine or attachment specifications may be available on request. Please refer to the user and maintenance manuals located on Dieci Australia's website for correct machine and attachment operation.

Printed in Australia

V1125