

# BETTER TOGETHER.



# 2025

# BETTER TOGETHER.

## ABOUT

Anthos and MyRay are members of CEFLA MEDICAL GROUP (ITALY) – A global leader in the dental equipment sector. Cefla Medical Equipment merges innovation and excellence in production to provide premium solutions for dentistry.

[WATCH CEFLA VIDEO](#)

## ANTHOS IN AUSTRALIA

We are a long-standing direct-to-customer Australian distributor of ANTHOS & MYRAY. We offer proven experience, expertise, and equipment, focusing on the local Australian dental profession. Anthos Australia together with Anthos/MyRay Italy.

**SIMPLY BETTER TOGETHER.**

\*\*\*Prices exclude installation and freight. Anthos may adjust pricing without notice. Images are indicative and may show optional items. Contact Anthos Australia for product details.

## DENTAL UNITS

Anthos, Italy's leading dental unit producer, offers a wide range designed to suit every dentist's working style. Its portfolio spans three ergonomic categories—Classe L, Classe A, and Classe R—featuring 7 models and 25 versions.

[WATCH VIDEO](#)

## STERILIZATION

The Anthos portfolio is complemented by industry-leading proven STERILIZATION solutions. 3 different models & 9 different versions within the Anthos Sterilization Range.

[WATCH VIDEO](#)

## X-RAY IMAGING

MyRay is a worldwide brand that has earned the trust of dental professionals and radiologists worldwide. The product range, focused on dental, offers a wide product range, each with specific technological innovations aimed at enhancing the in-surgery work experience.

**Intra Oral:** X-ray units, Direct Capture Digital Sensors & Digital Phosphor Plate System.

**Panoramic:** 2D panoramic imaging units (OPG).  
**Cone Beam 3D:** Multiple 3D imaging platforms & high-performance software.

**Multimedia & Integrated Solutions:** Intra Oral Camera and multiple integrated (sensor/x-ray/camera) solutions directly connected to the Anthos dental unit range.

**Intra Oral Scanner – 3Di IOS:** One of the lightest scanners on the market.

[WATCH VIDEO](#)



# L9

## PREMIUM KNEE BREAK UNIT

MORE INFO

WATCH L9 VIDEO



### 3 Versions Available:

1. CONTINENTAL

2. SIDE HANGING HOSE

3. HYBRID LEFT & RIGHT

SIDE DELIVERY VERSION

## SUPERIOR EVOLUTION OF OPPORTUNITIES

### KNEE BREAK MOTORISED COMPACT UNIT

- Floor-Fixed Treatment Unit with Knee Break Chair
- Cross Over Ergonomics – Highly compact and adaptable to most operating styles.
- Side Delivery option.
- Hybrid Left-Right Operator Version
- Latest steps forward in integrated technology including built in X-ray & Multimedia options.
- Cutting Edge Electronics – Suited demands in conservative, endodontics & oral surgery.

~~RRP: \$63,630 + GST = \$69,993~~

**SPECIAL**

**\$45,450 + GST = \$49,995**



HYBRID LEFT-RIGHT VERSION

# A7

## PREMIUM PERFORMANCE & GROWTH

MORE INFO

WATCH A7 VIDEO



CONTINENTAL SIDE FLEX

## UNLIMITED POTENTIAL

### FUTURE PROOF

- Full LCD Colour Interactive Dentist Display inc.
- LED Brushless MicroMotor IMMS. 5.3 nCM
- Anthos UPZ Ultrasonic Scaler.
- Suitable for Endodontics (integrated library)
- Suitable for Implantology via optional peristaltic pump.
- Triple articulating headrest.
- Viscoelastic Memory Foam Upholstery.
- NEW VENUS MCT Premium LED Operating Light

~~RRP \$56,990 + GST = \$62,689~~

**\$40,900 + GST = \$44,990**



ADVANCED ENDO  
MODE



ADVANCED  
COMMUNICATION



IMPLANTOLOGY MODE



MULTI COLOUR TEMP  
LIGHT TECHNOLOGY



TRIPLE ARTICULATING  
HEADREST



MEMORY FOAM  
UPHOLSTERY

# A5

MORE INFO

WATCH A5 VIDEO

## PROVEN **ELECTRIC** PERFORMANCE

- Electric Unit — Quality, Reliability and Performance.
- Electric Low Speed LED Brushless, Motor-iMMS.
- Anthos UPZ Ultrasonic Scaler.
- Anthos Upgraded A2 Series Patient Chair.
- VENUS LED Operating Light.
- Hygienic—S.H.S Water Maintenance System
- With ENDODONTIC FUNCTION Standard (Integrated Apex Locator Optional)

~~RRP: \$44,500 + GST = \$48,950~~

**\$31,800 + GST = \$34,980**

*"NOW WITH  
ENDO FUNCTION"*



ULTRASONIC SCALER



ELECTRIC MOTOR  
& ENDO MODE

# A3

MORE INFO

WATCH A3 VIDEO

## PROVEN **AIR** PERFORMANCE

- Quality & Reliability—Made in Italy
- Hygienic—SHS Water Maintenance System.
- Automated light & hands free suction on-off.
- Multi-Function Footswitch.
- Venus operating light.
- Upgradeable to large suite of Anthos options.

~~RRP: \$34,500 + GST = \$37,950~~

**\$24,500 + GST = \$26,950**



\* Multimedia/Screen/Camera is OPTIONAL Extra  
Image may include other optional items.



# R7

MORE INFO

WATCH R7 VIDEO



## INFINITE PREMIUM SOLUTIONS.

**R FOR REVERSE**  
**– TRUE LEFT & RIGHT (AMBIDEXTROUS) CONVERSION**

- LED Brushless MicroMotor iMMs (5.3 ncm) with endodontic settings
- Anthos UPZ Ultrasonic Scaler.
- Anthos R1 Patient Chair with 30 degree rotation.
- Hygienic—S.H.S Water Maintenance System.
- Smart Interactive Touch Screen.
- Full LCD Colour Interactive Dentist Display inc.
- LED Brushless MicroMotor IMMS. 5.3 nCM
- Anthos UPZ Ultrasonic Scaler.
- Suitable for Endodontics (integrated library)
- Suitable for Implantology via optional peristaltic pump.
- Triple articulating headrest.
- Viscoelastic Memory Foam Upholstery.
- NEW VENUS MCT Premium LED Operating Light

~~RRP: \$59,990 + GST = \$65,689~~

**\$42,900+ GST = \$47,190**



RIGHT HANDED SET-UP



LEFT HANDED SET-UP



R7 CHAIR ONLY  
 FROM \$10,990+GST= \$11,990



R7 CART ONLY  
 FROM \$10,990+GST= \$11,990



VENUS LED CEILING MOUNT LIGHTS  
 FROM \$4,500+GST= \$4,950

# MULTIMEDIA

WATCH VIDEO

MYRAY CU-2D HD CAMERA



## BETTER TOGETHER.

Myray Intra Oral Multimedia and X-Ray integration into Anthos Dental Units – Smart & Effective Patient Communication.

**IO CAMERA / SCREEN INTEGRATED  
ON ANTHOS UNITS  
FROM \$6,250 + GST = \$6,875**

**DIGITAL SENSOR INTEGRATED ON ANTHOS UNITS  
FROM \$6,250 + GST = \$6,875**

### MYRAY CU-2 HD CAMERA

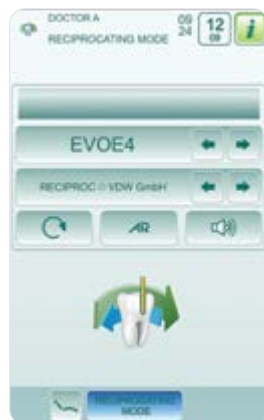
A total digital imaging device featuring Progressive Scan technology, ensuring premium image definition and perfect freeze-frame quality. A digital video system is fully integrated into the handpiece with a high-speed USB2 connection.

**\$3,090 + GST = \$3,399**

# UPGRADES



ENDO / APEX LOCATOR



RECIPROCATING MODE



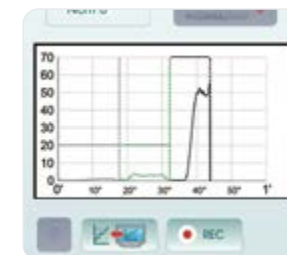
STOOLS



ANTHOS INTEGRATED  
PERISTALTIC PUMP



IMPLANT MODE



IMPLANT TORQUE CURVES



W.H.E ANTHOS



BIOSTER & FLUSHING



A.C.V.S. ANTHOS

# A5 PROFESSIONAL PACKAGE

ENQUIRE NOW

BUY THE COMPLETE PACKAGE FOR

## \$86,800

+ GST = \$95,480

**ANTHOS MYRAY MID LEVEL SURGERY PACKAGE SUGGESTION:**

A cohesive comprehensive surgery package from Anthos & MyRay (Cefla). Quality, Reliability, Flexibility, Security. Excellent buying.

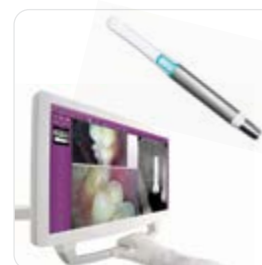


**A5** WITH STOOLS

ADD  
X5 2D OPG  
FOR ONLY  
**\$19,990\***  
+ GST 21,890



\* PRICING AVAILABLE IN CONJUNCTION WITH FULL A5 PACKAGE BELOW



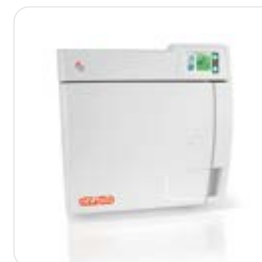
INTEGRATED MULTIMEDIA



EXTEND IO X-RAY



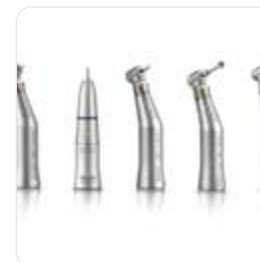
ZEN-X DIGITAL SENSOR



A17 PLUS STERILIZER



AC200/TURBO A (2-3)



HIGH & SLOW SPEED HANDPIECES



# A7 PREMIER PACKAGE FUTURE PROOF

ENQUIRE NOW

BUY THE COMPLETE PACKAGE  
FOR

## \$102,500

+ GST = \$112,570

### ANTHOS MYRAY PREMIUM LEVEL SURGERY PACKAGE SUGGESTION:

A cohesive comprehensive surgery package  
from Anthos & MyRay (Cefla) Setting you up for  
long term success.

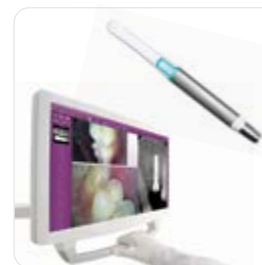
**A7** WITH STOOLS



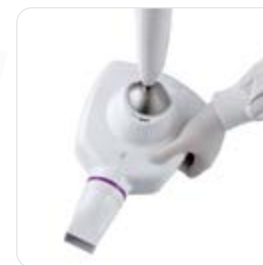
ADD  
X9 2D OPG  
(3D UPGRADEABLE)  
FOR ONLY  
**\$29,990\***  
+ GST 32,989



\* PRICING AVAILABLE IN CONJUNCTION  
WITH FULL A7 PACKAGE BELOW



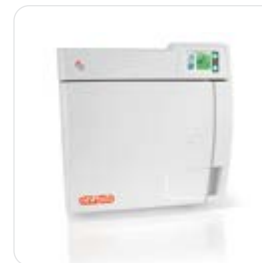
INTEGRATED MULTIMEDIA



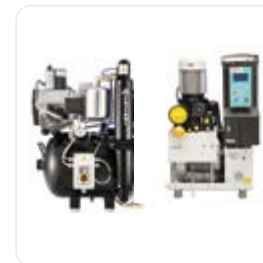
HYPERSPHERE X-RAY



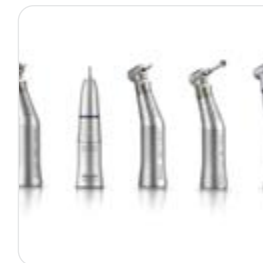
HY SCAN PSP



A22 PLUS STERILIZER



AC300/TURBO B (3-4)



HIGH & SLOW SPEED  
HANDPIECES

# X5 2D AIR

MORE INFO

WATCH X5 2D VIDEO

WORLD'S ONLY WALL  
MOUNT OPG & CEPH



## EASY 2D DIAGNOSTICS

NOW ALSO AVAILABLE  
IN LATERAL CEPH

The first & still the best suspended wall mounted 2D imaging system. The world's smallest, now available for your surgery. Innovative design, flexibility and user friendliness. Out of our experience comes the best solution for every dentist.

- Up to 22 Diagnostic 2D programs.
- Focus Free (MRT) Technology.
- Multilayer (5) Images from One Single Scan.
- Quick Pan Low Dose Functions – 6.6s
- 2D OPG is upgradeable to lateral ceph in future.
- Compatible with other software systems.

### 2D PANORAMIC (OPG)

~~RRP \$38,450 + GST = \$42,295~~

**\$27,250 + GST = \$29,975**

### 2D PAN/CEPH

~~RRP \$55,900 + GST = \$61,490~~

**\$42,250 + GST = \$46,475**

2D OPG



PANORAMIC



LATERAL CEPH



CCEPH AP/PA

# X9 PRO 2D

## PREMIUM UPGRADEABLE 2D IMAGING PLATFORM

MORE INFO

WATCH X9 2D VIDEO

***“NOW ALSO AVAILABLE  
OPTIONALLY IN THE LATEST  
DCIII - 2D DIRECT CONVERSION  
SENSOR TECHNOLOGY”***

WATCH DC TECHNOLOGY VIDEO



ADVANCED PATIENT POSITIONING



INTEGRATED USER SCREEN  
(OPTION)



SELECTABLE LEFT OR RIGHT CEPH  
INSTALLATION FLEXIBILITY



## UPGRADEABLE PLATFORM 3 IN 1

### PANORAMIC (OPG), LATERAL CEPH & 3D CBCT UPGRADEABLE

Fully configurable with a modular and scalable design makes it possible to transition from a basic to a more advanced version in an easy and cost-effective manner.

- ADVANCED KINEMATICS  
The most advanced imaging technology.
- HD MULTI PAN  
Clear and detailed panoramic images at all times.
- HIGH ORTHOGONALITY  
Reduces overlapping
- WIDE RANGE OF FOCAL LAYERS
- Focus Free (MRT) Technology
- LATERAL CEPH PROJECTION  
with selectable scan length

### 2D OPG “3D UPGRADEABLE”

~~RRP \$51,450 + GST = \$56,595~~

**\$39,990 + GST = \$43,989**

### 2D OPG/CEPH “3D UPGRADEABLE”

~~RRP \$65,900 + GST = \$72,490~~

**\$49,990 + GST = \$54,989**

# X5 3D

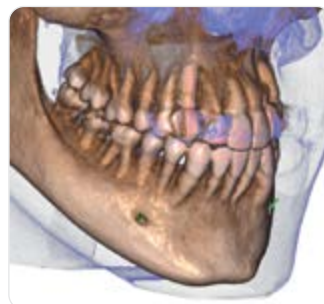
## 3D CBCT SMART ENTRY

MORE INFO

WATCH X5 3D VIDEO



2D/3DCBCT



3D (UP TO 10 x 10 CM FOV)



MYRAY IRYS – FULL DIMENSION SOFTWARE

## EASY 2D/3D DIAGNOSTICS

### 3D CBCT, PANORAMIC (OPG) & LATERAL CEPH

- 3D Multi FOV – 10 x 10 cm, single scan of the entire dentition, together with smaller FOV for reduced areas of interest.
- Very High Resolution (80µm)
- 3D Workstation & 5 user 3D license included.
- Quick Scan Low Dose Functions – 6.4s
- 3D CBCT is upgradeable to lateral ceph in future
- SCOUT VIEW: improved smaller field of view use
- IMPLANT SIMULATION

### 3D CBCT 10x10 FOV (& OPG)

RRP ~~\$99,990 + GST = \$109,989~~

**SPECIAL**

**\$72,500 + GST = \$79,750**

\*INCLUDES 3D WORK STATION

### 3D CBCT 10x10 FOV (& OPG) WITH LATERAL CEPH

RRP ~~\$122,090 + GST = \$134,299~~

**\$85,450 + GST = \$93,995\***

\*INCLUDES 3D WORK STATION



# X9 PRO 3D

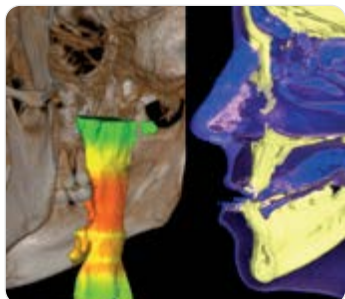
3D CBCT PREMIUM PLATFORM  
UP TO 13x16cm FOV

MORE INFO

WATCH X9 3D VIDEO

***“NOW ALSO AVAILABLE  
OPTIONALLY IN THE LATEST  
DCIII - 2D DIRECT CONVERSION  
SENSOR TECHNOLOGY”***

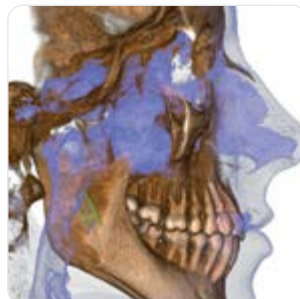
WATCH DC TECHNOLOGY VIDEO



AIRWAY ANALYSIS



MYRAY IRYs – FULL DIMENSION SOFTWARE



UP TO LARGE 13x16 CM FOV

## OPTIMAL 3D CBCT EXPERIENCE

### 3D CBCT, PANORAMIC (OPG) & LATERAL CEPH

- Full Arch Volumetric Scanning
- Multiple FOV options – Up to 13 x 16 CM
- 3D Workstation & 5 User 3D licenses included
- Fast CB3D low dose quick scan application (up to 3.4s)
- Advanced implant planning tools
- Endodontic examination with extremely high resolution (up to 68µm)
- Airway volume analysis
- Assessment of zygomatic implants
- Orthodontic applications

### X9 PRO 3D CBCT 10 x 8 CM FOV

~~RRP: \$121,500 + GST = \$133,650~~

**SPECIAL**

**\$84,990 + GST = \$93,489**

### X9 PRO 3D CBCT 13 x 16 CM LARGE FOV WITH ON BOARD TABLET

~~RRP: \$135,900 + GST = \$149,490~~  
**SPECIAL**

**\$94,990 + GST = \$104,989**

### LATERAL CEPH

PLEASE ADD

**\$9900 + GST = \$10,900**

(Assumes New Configuration)

# IO X-RAYS



**MYRAY RX DC WIRED CART  
(MOBILE MOUNTED)**

[MORE INFO](#)

~~RRP: \$7,090 + GST = \$7,799~~

**\$5,450 + GST = \$5,995**



**MYRAY RX DC WIRELESS EXTEND**

[MORE INFO](#)

RXDC eTend combines practical wireless simplicity with intelligent design to provide the dentist with precision equipment enabling accurate imaging at low X-ray doses.

~~RRP: \$7,590 + GST = \$8,349~~

**\$5,790 + GST = \$6,369 (WIRELESS REMOTE)**



**MYRAY RX DC WIRELESS HYPERSPHERE  
– CHAIR (ANTHOS) MOUNTED**



**MYRAY RX DC WIRED CART  
MOBILE MOUNTED**



**MYRAY RX DC WIRELESS  
HYPERSPHERE (CHAIR MOUNTED)**

[MORE INFO](#)

~~RRP: \$8,090 + GST = \$8,899~~

**\$6,090 + GST = \$6,699 (WIRELESS REMOTE)**

# DIGITAL IO X-RAYS

[MORE INFO](#)

[WATCH DIGITAL IO VIDEO](#)



[WATCH ZEN-X VIDEO](#)

## ZEN-X SENSORS

New USB direct HD Sensor connection, available in either Size 1 or Size 2. Also available in Integrated Anthos Chair version

**Size 1 (Smaller)**

~~RRP: \$7,090 + GST = \$7,799~~

**\$5,450 + GST = \$5,995**

**Size 2 (Larger)**

~~RRP: \$7,880 + GST = \$8,668~~

**\$5,990 + GST = \$6,589**

**Anthos Dental Unit SENSOR  
Integration Module:**

**\$1,200 + GST = \$1,320**

## MYRAY HY SCAN PHOSPHOR PLATE

Always reliable diagnosis, comfort, and fast capture times. HY-Scan gives access to unrivalled digital technology and film like ergonomics, all in one compact, affordable device. Supplied with one each of Size 0, Size 1, Size 2 & Size 3 Platez

~~RRP: \$12,120 + GST = \$13,332~~

**\$9,090 + GST = \$9,999**



# INTRA ORAL SCANNING

[MORE INFO](#)

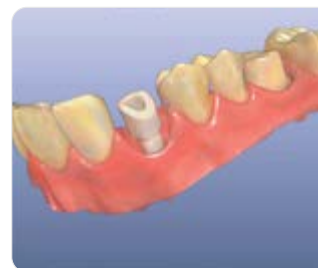
[WATCH VIDEO](#)



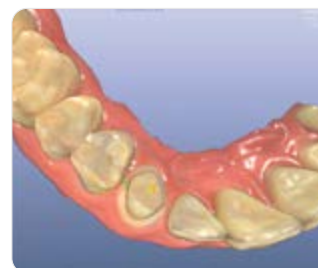
## MYRAY 3Di IOS INTRA ORAL SCANNER

### ONE OF THE LIGHTEST SCANNERS ON THE MARKET

Full digital impressions with 3Di IOS workflow with the speed and accuracy that only digital technology can provide.



IMPLANT SCANNING



- OPEN SYSTEM 3Di IOS scan files can be exported in three different formats. the most commonly used and universal STL, PLY and OBJ which also contains information on colour texture
- Powder Free
- Colour Scanning
- 2D Video Camera

# STERILIZATION

## ANTHOS CLASS B STERILIZATION SOLUTIONS

A SOLUTION FOR EVERY PRACTICE

[MORE INFO](#)

[WATCH STERILIZATION VIDEO](#)



### A SERIES

RELIABLE. UNCOMPROMISING QUALITY

- Three Sizes – 17L, 22L & 28L
- With Traceability Software for Data Tracking.
- Three Years Warranty or 3000 Cycles

**FROM \$8,990 + GST = \$9,889**



### A PLUS SERIES

INNOVATION WITH TAP WATER USE.

- Three Sizes – 17L, 22L & 28L
- With Traceability Software for Data Tracking.
- LCD Touch Screen
- Tap Water Filling.
- Three Years Warranty or 3000 Cycles

**FROM \$10,450 + GST = \$11,495**



### A PLATINUM SERIES

REWRITE THE RULES

- Three Sizes – 17L, 22L & 28L
- With Traceability Software for Data Tracking
- Large 7" Display on Door with Video Tutorial & LED Status
- PLUS RECYCLES TAP WATER  
50 Cycles with 5 Litres of Tap Water.
- Three Years Warranty or 3000 Cycles

**FROM \$12,450 + GST = \$13,695**