



# monitor

the world's  
best equipment  
supported  
locally

Sales | Service | Parts | Hire | Finance

## Monitor RR14 EVO3/400 Rail Boom Lift

1800 025 024  
[monitor.net.au](http://monitor.net.au)

@MonitorAUS



V1.0 - 241014

# MONITOR RR14 EVO3/400

The RR14 EVO has been specifically designed from the ground up for use on rail, and has a host of unique features to provide fast and safe access above both rail and normal terrain.

In the creation of the machine, a lot of attention has been given to meet the stringent industry requirements, resulting in unmatched performances.

The self-levelling turret and very strong chassis allows an amazing horizontal outreach of 9.3 m when set-up on rail. Not only this, but the RR14 EVO will also drive whilst elevated, greatly improving work efficiencies.

Available in a tri-gauge version, the RR14 EVO can be used on all three rail gauges in Australasia. It is available with the option of direct hydraulic drive, 4 Wheel Steer for superior performance and handling.

Every rail industry requirement has been thought of and catered for, with an emergency back-up diesel engine, electric emergency lowering system and directional LED lights through to the options of an on-board generator, work area lighting, anti-crush device, rail equipment position indication and EDD's.

An optional pantograph is available for measuring the height and distance of overhead wires. A data recorder and GPS device stores inspection data for referencing.



## OPTIONAL ADD-ONS:



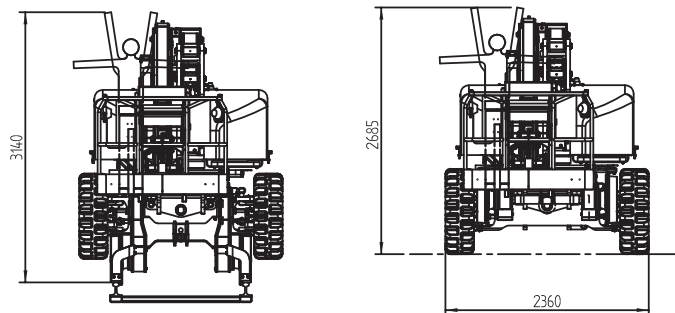
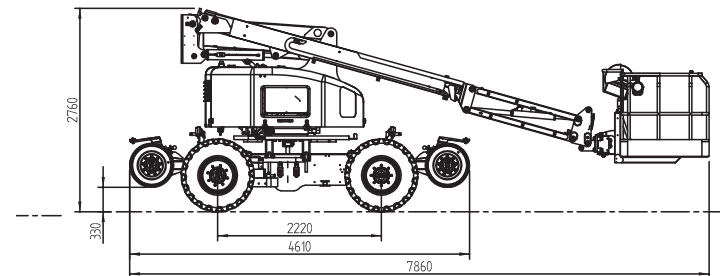
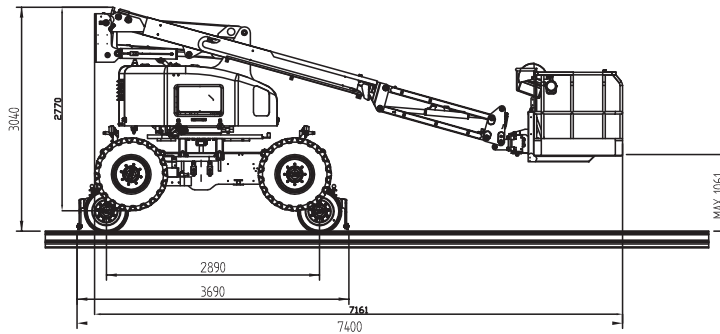
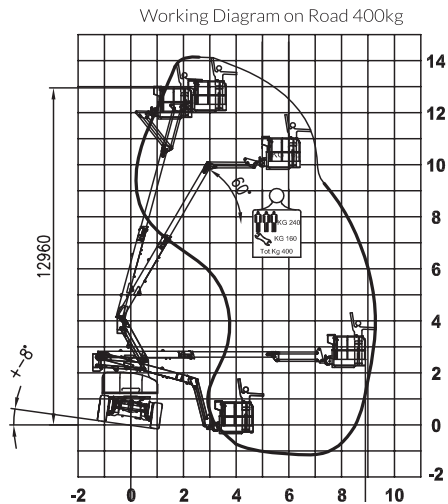
Lithium  
Battery



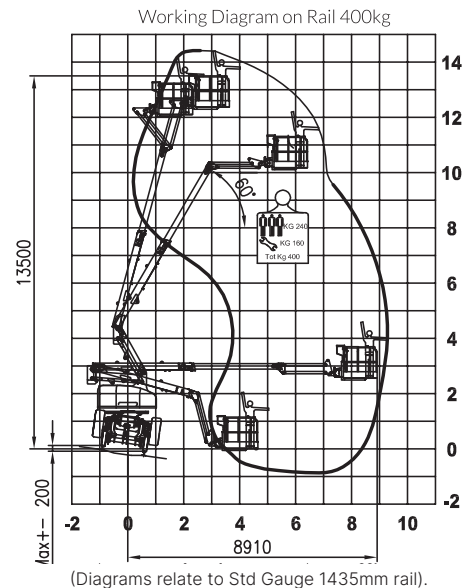
Measurement  
Pantograph



# Technical Specifications



(2540 with new hub design)  
(2450 to hubs with wheels reversed - 2420 to tyres)  
(2495 with wheels reversed on one side only)



Max working height	Rail 14.4 m (tyres 14.1 m)
Max horizontal outreach	Rail 9.3 m (tyres 10.2 m)
Max rated capacity	3 persons / 400 kg
Weight (approx.)	13,400 kg
Turret rotation	359°
Basket rotation	180°
Ground pressure driving (approx)	kN/m <sup>2</sup>
Traffic load (live load) travelling	kN/m <sup>2</sup>
Auto levelling turret	Std
Gradeability lengthwise	16°
Gradeability sideways	8° rail (14° tyres)
Standard engine	Hatz 48 hp Diesel
Optional power source	Emergency Hatz 9 hp Diesel
Dual power options	Hybrid with Lithium Batteries
Tri-guage	Optional
Drive Speed	Rail 18 km/hr (Road 8 km/hr)
Electric emergency lowering	Std

(All specs E&OE and subject to change)

NOTE: Specifications vary between models as well as with rail gauge changes.  
For more detailed information on the RR14 EVO, please contact Monitor.

# Standard Features of the Monitor RR14

## 4 Wheel Steer & 4 Wheel Direct Hydrostatic Drive

with option of 18 km/h drive speed on rail

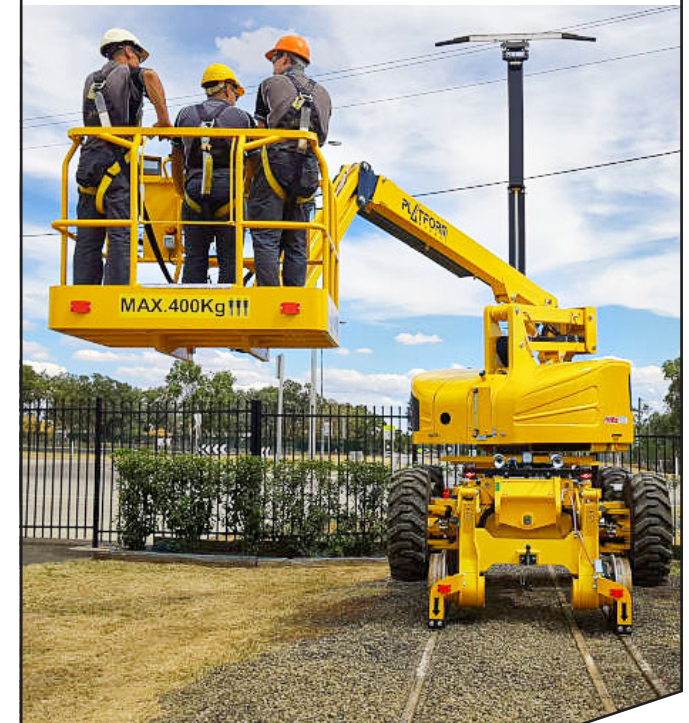


## 8° Self-leveling turret



## 400 kg MRC

3 person large basket





# Optional Accessories

## Lithium Battery

With a more efficient technology that is environment friendly with the reduction of noise and emissions and increased safety.

It boasts a fully electric solution that enables it to be used in any situation with low noise, and no emissions.



## Measurement Pantograph

Designed to fit to the RR14 EVO3, it is very compact in size to maximize the machine's manoeuvrability, retracting to a stowed height position of only 3m.

This enables the machine to be transported on trucks without having to remove the pantograph.







zero  
downtime  
guarantee\*



# Our Locations

## Branches & Service Centres



### Tamworth

143 Gunnedah Rd  
Tamworth NSW 2340



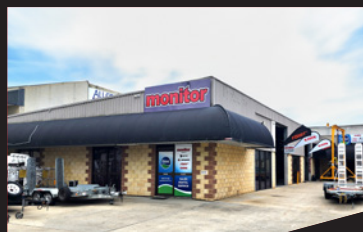
### Sydney

49-50 Cassola Pl  
Penrith NSW 2740



### Melbourne

24-28 William Rd  
Dandenong South VIC 3175



### Brisbane

191 Magnesium Dr  
Crestmead QLD 4132



### Brisbane - Caboolture

2 Alta Drive  
Caboolture QLD 4510



### Perth

11 Reihill Rd  
Maddington WA 6109



[agent@monitor.net.au](mailto:agent@monitor.net.au)

1800 025 024  
[monitor.net.au](http://monitor.net.au)

@MonitorAUS



**monitor**

the world's best equipment supported locally

Monitor RR14 EVO3/400 Rail Boom Lift

10