

# 32HL710S 4K Surgical Monitor

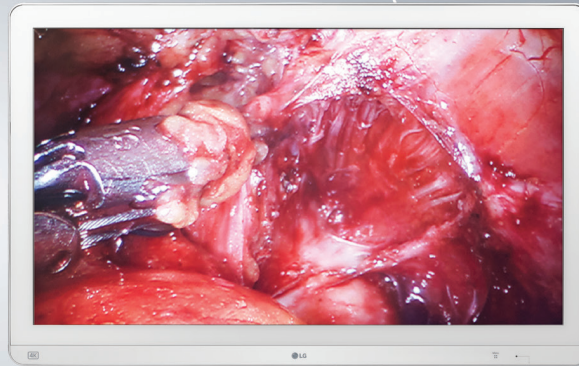


## ▶ 32HL710S

FDA Class 1  
32" Class (31.5" Diagonal)

### A DISPLAY OPTIMIZED FOR THE OPERATING ROOM

32HL710S, 4K monitor provides fast responsive accurate image viewing from virtually any angle. LG engineered to provide low latency from video source to display and backlight brightness monitoring & control to produce consistent flicker-free video. Use with a wide variety of Endoscopy cameras to provide remarkably smooth and accurate upscaling of Full-HD video. Monitor features easy cleanable protective glass and lightweight sleek design with magnetic cover for precision cable management.



Images on screen are simulated



## FEATURES

### 115% OF SRGB ENHANCING DEEP REDS

- This 4K monitor not only enables detailed observation of previously hard-to-see regions but also 115% of sRGB to ensure accurate color reproduction in the surgery room. Moreover, by adding a deep red color spectrum, the LG surgical monitor assures color expression of the red spectrum.

### BRIGHTNESS STABILIZATION

- Equipped with a backlight sensor that continuously monitors and maintains calibrated brightness to ensure image consistency from day one through the lifetime of the monitor.

### HDR10 SUPPORT

- This LG surgical monitor is designed to work with HDR-supported medical devices such as endoscopy cameras. It can deliver images vividly and supply better visibility in dark areas.

### MIRROR AND ROTATION

- The 32HL710S has Mirror and Rotate functions that help to optimize the operating view. Mirror allows a flipped image, and Rotate allows a 180-degree rotation of the image.

### DUST & WATER RESISTANT

- The LG's multi-coated IP35-rated glass is highly durable and protects the panel during surgical procedures.

## SPECIFICATIONS

UL Medical Grade Listed

FDA Class 1

TAA Compliant

Native Display Resolution 3840 x 2160 (4K UHD)

Brightness 800 cd/m<sup>2</sup>

Contrast Ratio 1000:1

14ms (GtG) Response Time

DisplayPort / HDMI / 3G-SDI / DVI (video inputs)

VESA™ Compliant Mounting

3-Year Limited Warranty (SWAP)

# 32HL710S

## 4K Surgical Monitor



PANEL	MODEL	32HL710S
	Size (Inch)	31.5"
	Resolution	3840 X 2160
	Panel Type	IPS
	Aspect Ratio	16:9
	Pixel Pitch	0.18159mm x 0.18159mm
	Brightness (Typ.)	800 cd/m <sup>2</sup>
	Color Gamut (Typ.)	sRGB 115% + Deep Red
	Contrast Ratio (Typ.)	1000:1
	Response Time	14ms (off), 5ms (faster setting)
	Viewing Angle (CR ≥ 10)	178° (R/L), 178° (U/D)
	Surface Treatment	With Air-Gap Glass (1.6t, AR, AF)
SPECIAL FEATURES	BLS (ALS)	YES
	Black Stabilizer	YES
	Color Calibrated	YES
	Flicker safe	YES
	HDR10	YES
	HDR Effect	YES
	HW Calibration	YES
	PBP	2PBP/3PBP/4PBP
	PIP	YES
	Picture Mode	HDR Effect, BT.2020, DICOM, Mono, Vivid, Custom, Calibration 1, Calibration 2
	Screen Flip	YES
	Smart Energy Saving	YES
	Super Resolution +	YES
	Uniformity	YES
User Preset	YES	
True Color Pro	YES	
INPUT/OUTPUT	3G-SDI	YES (1 In / 1 Out)
	DVI	YES (1 In / 1 Out)
	Display Port	YES - Version 1.2 (1 In / 1 Out)
	HDMI	YES - Version 2.0 (1)
	RS-232 (Command Protocol)	YES
	USB Downstream Port	YES - Version 2.0 (1)
	USB Upstream Port	YES - Version 2.0 (1)
POWER	Type	External Power(Adapter)
	AC Input	100-240v
	DC Output	19 - 24V , 6.32A - 5.0A (24V Ready)
	Power Consumption (Max)	120W
	Display Position Adjustments	None

MECHANICAL	MODEL	32HL710S	
	VESA Mounting	(200mm x 100mm) and (100 x 100 mm)	
	Dimension with Stand (W x H x D)	N/A	
	Dimension without Stand (W x H x D)	30.1" x 18.9" x 3.7" / 764.6 x 480.8 x 94.4 mm	
	Dimension in Shipping (W x H x D)	34.8" x 23.6" x 7.9" / 883 x 599 x 200 mm	
	Weight with Stand	N/A	
	Weight without Stand	26.9 lbs / 12.2 Kg	
	Weight in Shipping	38.0 lbs / 17.2 kg	
STANDARD	IEC (IEC 60601-1 / IEC 60601-1-2)	YES	
	EN (EN 60601-1 / EN 60601-1-2)	YES	
	CSA( CAN/CSA C22.2 No. 60601-1, CSA 22.2 No. 601.1-M90)	YES	
	FCC (FCC part 15 Class A)	YES	
	UL60601-1	YES	
	FDA	Registration (Class I)	
	CE(MDD 93/42/EEC, 2007/47/EC)	YES	
	ISO13485	YES	
	GMP	YES	
	KGMP	YES	
	KC	YES	
	CE(EU)	YES	
	RoHS	YES	
	REACH	YES	
	WEEE	YES	
	MFDS(KR)	YES	
	ACCESSORY	Adapter	YES
		Calibration Report	YES
		Power Cord	YES
HDMI		YES	
Display Port		YES	
OTHER	Limited Warranty	3 Year (SWAP)	
	UPC	7 19192 63453 4	



- <https://www.lg.com/us/business/commercial-display>
- <https://www.twitter.com/LGCommDisplays>
- <https://www.facebook.com/LGcommercialdisplays>
- <https://www.linkedin.com/company/lg-commercial-displays-usa>
- <https://www.youtube.com/lgcommercialdisplayusa>
- 800-897-8726 | IT Sales

LG Electronics U.S.A., Inc.  
HE B2B Division  
2000 Millbrook Drive  
Lincolnshire, IL 60069

Customer Service: 888.865.3026  
[www.LG.com/us/commercial/display-support](http://www.LG.com/us/commercial/display-support)

Contact your LG Regional Sales Representative:  
Sales Contact: 800.897.8726  
E-mail: [info@LGSolutions.com](mailto:info@LGSolutions.com)

© Copyright 2019 ©LG Electronics USA, Inc., 2000 Millbrook Dr. Lincolnshire, IL 60069, USA. All rights reserved. LG and the LG logo are registered trademarks of LG Corp. All other trademarks are the property of their respective owners. Prices and products may vary by dealer. Prices, designs, features and specifications are subject to change without notice. All screen images are simulated.

SPEC\_32HL710S\_101959\_LR

