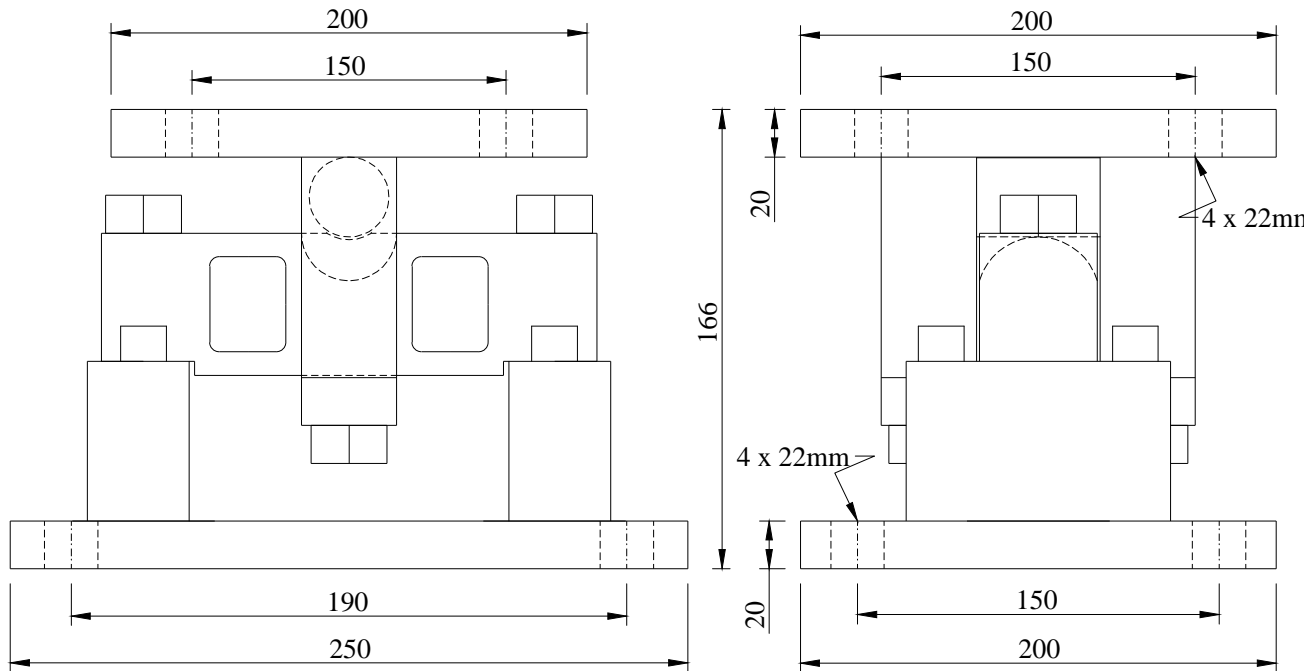


# Kelba 'KDSB' 5T, 11T & 15T



\* Self checking easy to use design allows module to be bolted directly to the tank leg with out requiring additional mounting plates or load buttons

\* Uplift restraint 3,000Kg.

\* Environmentally protected load cells.

\* Double - ended shear beam design , center loaded

## STANDARD CAPACITIES

5,000kg, 11,000 kg & 15,000 kg

## SPECIFICATIONS

Rated Output	3.00 mV/V ± 0.25%
Accuracy class	0.03
Non-linearity	0.03 % F.S
Hysteresis	0.03 % F.S
Non-repeatability	0.02 % F.S
Creep in 30 minutes	0.03 % F.S
Temperature effect span	15 PPM / °C of applied Load
Temperature effect zero	26 PPM / °C of applied Load
Compensated temperature range	- 10°C ~ 40 °C
Operating temperature range	- 40°C ~ 65 °C
Zero balance	± 1 % F.S
Input resistance	770 ± 40 Ω
Output resistance	700 ± 5 Ω
Safe overload	150 % F.S
Ultimate overload	300 % F.S
Excitation voltage	10 VAC/DC
Maximum excitation voltage	30 VAC/DC
Insulation resistance	> 5000M Ω (50 V DC )
Environmental protection	IP67
Material	Alloy tool steel
Cable length	9 Mtr

## Wiring Color Code

Excitation + Red	Signal + Green
Excitation - Black	Signal - White

## Kelba (Australia) Pty Ltd

Reference		KELBA "KDSB"			
Date	31/03/16	5T, 11T & 15T			
Drawn	Jerome Dagang				
Approved		Drg. No.	KDSB 11T- 15T	Rev.	3
Scale	NTS			Date	24/03/17