

MU10 Veterinary Ultrasound Scanner

Portable Veterinary Imaging for Fast, Accurate Field Diagnostics



Product Overview

The MU10 Veterinary Ultrasound Scanner is a lightweight and portable diagnostic imaging system designed for veterinarians who require reliable ultrasound performance in clinics, farms, and mobile veterinary environments. Featuring a 12.1-inch HD display, rechargeable battery operation, veterinary-specific software, and support for multiple animal species, the system delivers accurate imaging wherever it is needed.

With long battery life, multiple probe options, and advanced imaging functions such as THI and Histogram technology, the MU10 helps veterinary professionals perform efficient reproductive, abdominal, and general diagnostic examinations.

Multi-Scenario Applications

- Companion Animal Clinics
- Equine Veterinary Practice
- Livestock & Farm Management
- Reproductive Examinations
- Pregnancy Diagnosis
- Mobile Veterinary Services

Key Features

Veterinary-Specific Software

- Dedicated veterinary measurement packages
- Species-specific presets
- Supports dog, cat, horse, pig, sheep, cow, goat, and camel examinations
- OB reporting functionality

Portable Field Performance

- Lightweight and compact design
- Rechargeable battery operation
- Multiple charging options
- Ideal for mobile veterinary applications

Advanced Imaging

- THI (Tissue Harmonic Imaging)
- Histogram Function
- 512-frame Cine Loop
- Adjustable image optimization controls
- High-definition image display

Flexible Operation

- Multiple language support
- USB image export
- Customizable body markers
- Probe compatibility for multiple applications



APS TECHNOLOGY

APS Technology Australia Pty Ltd, Sydney NSW, Australia

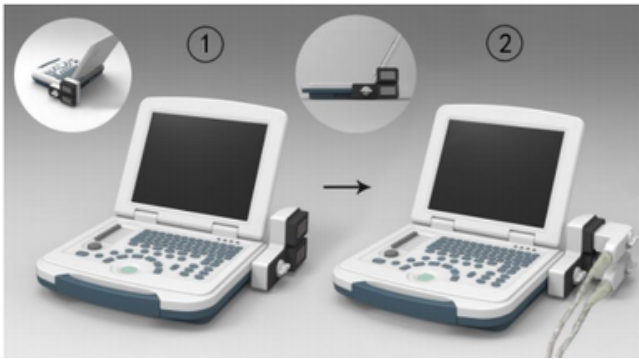
www.aps-technology.com.au | +61-048191-2826 | info@aps-technology.com.au



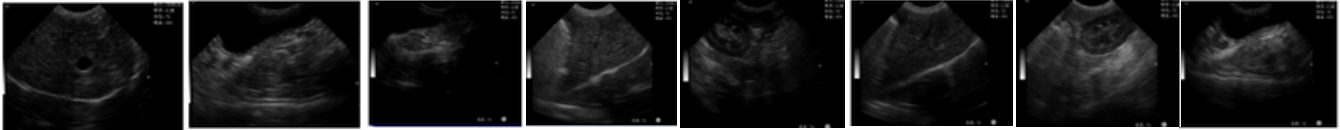
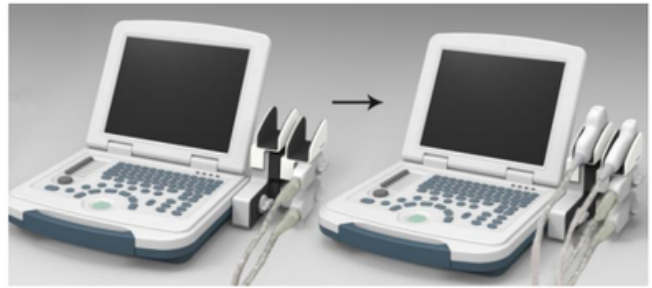
1



Model Snapshot



Probe holder (Option)



Key Parameters

Specification	MU10 Veterinary Ultrasound
Display	12.1-inch HD LCD
Battery Standby	>8 Hours
Continuous Working Time	Up to 4 Hours
Image Storage	4,920 Images
Cine Loop	512 Frames
Probe Depth Levels	16
Probe Frequency Levels	5
Focus Points	4
Dynamic Range	0-135
USB Support	FAT32 Compatible
Languages	English, Chinese, Spanish, French, Portuguese, Russian

General Specifications

Feature	Details
Animal Types	Dog, Cat, Horse, Pig, Cow, Sheep, Goat, Camel
Measurement Packages	8 Animal-Specific Packages
Image Storage	4,920 Images
Scanning Depth	Up to 189 mm
Body Marks	17+ Veterinary Presets
Image Orientation	Up/Down, Left/Right, Black/White
Export Method	USB Storage

Probe Options

Probe Type	Frequency Range
Convex Probe	2.0 – 5.0 MHz
Micro-Convex Probe	5.0 – 7.5 MHz
Linear / Rectal Probe	5.5 – 9.0 MHz

Standard Features

- Veterinary Software Package
- THI Imaging Technology
- Histogram Function
- Image Storage System
- Cine Loop Playback
- Adjustable TGC Controls
- Dynamic Range Optimization
- Measurement Packages
- Image Reversal Functions
- USB Data Export

Optional Accessories

- Docking Station
- Probe Holder
- Additional Probe Configurations
- Carrying Accessories

