



**CUBE ICEMAKER MODELS**

**SXU 40 SXU 50 SXU 80**

**INSTALLATION AND SERVICE MANUAL**

Revision 2

**STUART ICEMAKERS**

1 Jayelem Crescent

Padstow NSW 2211 Australia

Telephone (02) 9773 3711

Email [sales@icemachines.com.au](mailto:sales@icemachines.com.au)

Website [www.icemachines.com.au](http://www.icemachines.com.au)

## TABLE OF CONTENTS

	<b>PAGE</b>
Specifications	1
Installation instructions	2
Adjustments	2
Cleaning	3-4
Warranty	5
Warranty Return Guidelines	6

## SPECIFICATIONS

<b>MODEL</b>	<b>SXU 40</b>	<b>SXU 50</b>	<b>SXU 80</b>
ELECTRICAL	240V	240V	240V
	50hz	50hz	50hz
AMPS	1.8	2.3	2.5
REFRIGERANT	R134a	R404a	R404a
CHARGE	260g	280g	300g
WATER PRESSURE	All models	Minimum: 200kpa Maximum: 350kpa	
OPERATING TEMPERATURES	All models	Minimum: 10°C Maximum: 43°C	
WATER CONNECTION REQUIREMENTS	All models	3/4" BSP male stop cock	
DRAINAGE	All models	Floor waste or tundish below drain outlet on machine	



# INSTALLATION INSTRUCTIONS

## LOCATION

1. All models, allow a minimum of 100mm above and behind for correct ventilation. Best performance will be achieved between 10° and 32° Celsius
2. Machine must be **LEVEL**
3. Incoming water temperature affects ice production. Therefore, avoid above ground plumbing and pipes exposed to direct sunlight.

## START UP PROCEEDURE


1. Fit legs and ensure machine is level
2. Connect the drain hose to the machine and ensure there are no kinks and it has a fall to the external drain
3. Connect the non-return check valve to the male stop cock (tap)  
Connect the supply hose from the check valve to the inlet solenoid on the back of the icemaker and turn on stop cock (tap) **MAX. 350kpa**
4. Connect power cord to supply and switch on power

5. Press ON/OFF  on the front of the machine and then press 

The display will change to  and the machine will fill with water.

This will take several minutes depending on water supply.


The display will then change to  and the machine will commence

making ice. The machine will now run continuously until the bin is full. 


## ADJUSTMENTS

The only adjustment that may be necessary is ice thickness. The size of the ice cannot be varied but the cubes can be made more or less hollow.

This is done using the up or down arrows.

First press the set key. 

Then press to  make the cubes less hollow.

Or  to make the cubes more hollow.

# CLEANING

## CONDENSER CLEANING

A dirty condenser causes loss of production and could damage the compressor, therefore it should be cleaned at least every three months (more frequently in dusty environments)

Disconnect the power and remove the front plastic air grille to access the condenser.

The air grille is held in place by two screws and a pin and spring clip on each side. Take care not to break the air grille.



Using a stiff brush, clean the face of the condenser and then use a vacuum cleaner to draw dust out of the condenser.

Replace front air grille by pushing pins back into the spring clips and secure the screws.

**CAUTION:** Condenser fins have sharp edges and can cause lacerations.

## INTERNAL CLEANING



Before starting, dissolve one sachet/tablet of Kay-5 sanitizer in 500ml of warm water.

With the machine in the **OFF** mode press  to start the cleaning cycle.

The machine will fill for 7 minutes and then the pump will start. Pour the Kay-5 sanitizer into water trough.

The pump will run for 5 minutes and then stop.

The water inlet valve will then open and the water in the trough will be flushed down the overflow to the drain for another 5 minutes.

To restart the machine press  and then press  to return to icemaking.

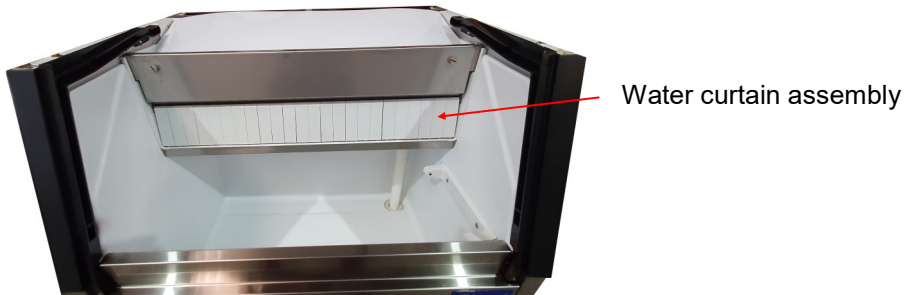
We recommend discarding the first 1-2 batches of ice after cleaning.

It is recommended that during the 15 minute cleaning cycle you should remove any existing ice from the storage bin and pour in at least 1-2 litres of warm water to flush out any dust from the bin and drain hose.

In some areas where there is a high calcium content in the water supply it may also be necessary to clean the water spray nozzles.

This will usually be evidenced by irregular ice cubes. (some not fully formed)

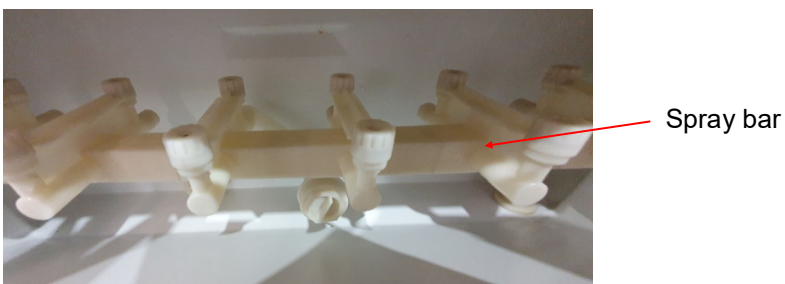
1. Remove water curtain assembly



2. Remove the wire ice slide



3. Unscrew the plastic spray nozzle retaining nut and remove from the spray bar



4. Clean the nozzles and nuts. A dilute solution of white vinegar and water will help break down the calcium in extreme cases.
5. Wipe out the bottom of the water trough with a clean cloth
6. When completed reverse the above process to re-assemble

**MANUFACTURER'S LIMITED LABOUR AND PARTS WARRANTY**

**STUART COMMERCIAL ICEMAKERS**

**Model SXU40, SXU50, SXU80**

CERISUN PTY. LTD. trading as STUART MANUFACTURING at 1 JAYELEM CRESCENT PADSTOW warrants to the original owner/user that any STUART SCU RANGE ICEMAKER shall be free of defects in material or workmanship under normal and proper use and maintenance service as specified by STUART MANUFACTURING and upon proper installation and start-up in accordance with the instruction manual supplied with the Product.

The obligation under this warranty is limited to:

- (1) associated and approved labour costs for a period of two years after original installation date;
- (2) the repair and/or replacement of parts or assemblies that in the opinion of STUART MANUFACTURING are defective, for a period of two years after the date of original installation;

The labour warranty shall include straight time labour charges at the product location only and shall exclude charges for travel time, mileage or other premium charges.

Any labour required to fulfill the warranty obligation must be performed by a refrigeration service company qualified and accepted by

STUART MANUFACTURING.

This warranty does not include parts or labour coverage for components failure or other damage resulting from:

- \* external electrical power failure or miswiring to the Product for any reason
- \* external water supply failure or plumbing problems to the Product for any reason
- \* external drain line malfunction
- \* adverse operating conditions as set forth in the owner/user manual for the Product.

All claims for labour or parts must be made through the original reseller. The defective part for which reimbursement is claimed, together with the service invoice, must be returned to STUART MANUFACTURING, freight pre-paid, within fifteen days from date of service to be eligible for labour and parts warranty coverage. All replacement parts must be approved STUART parts.

Incidents of failure that do not require the replacement of a part shall be explained in sufficient detail on the service invoice to identify the failure. All claims shall include the product model number, serial number, original date of installation and customer identification.

The foregoing warranty shall not apply to:

- (1) Faults caused by dirty water distribution systems or icemaking plate
- (2) Adjustments to ice thickness caused by incorrect installation.
- (3) any part or assembly
  - (a) that has been altered, modified or changed
  - (b) that has been subjected to misuse, abuse, neglect or accidents or
  - (c) any Product or part on which the serial or model number has been removed or altered
- (4) any Product that has been installed and/or maintained inconsistent with STUART technical publications
- (5) any product that has been installed or is located outside Australia.

The two years compressor parts warranty shall not apply when the Product's refrigeration system is modified with a condenser, heat reclaim device, or parts and assemblies other than those supplied by STUART MANUFACTURING unless STUART MANUFACTURING has accepted modification for specific installation in writing.

STUART MANUFACTURING assumes no liability for misuse or inadequate maintenance of the Product.

In no event shall the owner/user be entitled to recover incidental or consequential damages, including but not limited to damages for inconvenience, ice purchase, rental or replacement equipment, loss of profits or other commercial loss.

Warranties stated above are the only warranties made in connection with the sale and distribution of the Products.

ANY AND ALL OTHER EXPRESSED, STATUTORY AND IMPLIED WARRANTIES APPLICABLE TO THE PRODUCT, INCLUDING, WITHOUT LIMITATIONS, ALL IMPLIED WARRANTIES OF MERCHANTABILITY AND FITNESS FOR USE ARE EXPRESSLY DISCLAIMED.

The warranty information set forth above shall be governed by and construed in accordance with the laws of the state of NSW and, if applicable the laws of Australia. The labour warranty, as stated is extended only to the original owner/user and is not assignable to any other owner or user.

## WARRANTY CLAIM GUIDELINES

### Model SXU40, SXU50, SXU80

All STUART SXU range icemakers carry a standard two years warranty. This covers two years labour, two years on parts and two years on compressor failure, provided warranty conditions are met and installation is in accordance with published standards.

All dates are from the date of installation. This date is assumed to be a maximum of eight (8) weeks from the date of invoice to the dealer.

Warranty claims are conditional on the following:

- (1) All claims for labour or parts must be made through the original reseller.
- (2) The defective part must be returned with the service invoice to STUART MANUFACTURING, freight pre-paid, within 15 days of date of service. Details of End User, Model, Serial Number and Date of Installation of the product must be provided with the claim.
- (3) All replacement parts must be detailed and be approved STUART parts.
- (4) All labour only claims must be explained in sufficient detail on the service invoice to properly identify the nature of the failure.
- (5) The labour warranty includes standard straight time charges at the installation location only and does not include charges for travelling time, mileage or other premium charges.
- (6) When consumables such as driers, refrigerant etc. are supplied by the service agent, the cost allowed will be the Refrigeration Wholesalers list price only.
- (7) If a compressor is faulty and requires replacement, the service agent MUST contact Stuart Manufacturing before obtaining a replacement.

The warranty will not apply in the following circumstances:

- (1) When any part, assembly or ice machine:
  - (a) has been altered, modified or changed
  - (b) has been subject to misuse, neglect or accident
  - (c) where the serial number or other identification has been removed or altered.
- (2) When the product has been installed and or maintained in a manner inconsistent with the approved procedure or STUART technical publications.
- (3) The two years compressor warranty will not apply where the refrigeration system has been modified with a condenser, heat reclaim device or part or assembly not approved by STUART MANUFACTURING.

### **GENERAL**

The following warranty will apply to all spare parts:

- (a) Replacement parts exchanged while the original equipment is still under manufacturers warranty will be covered on pro-rata basis up to the warranty expiration of equipment in which they are installed.
- (b) Warranty on spare parts other than the above is three (3) months from the date of installation as evidenced by suitable documentation or eight (8) weeks from the invoice date of sale to the dealer.