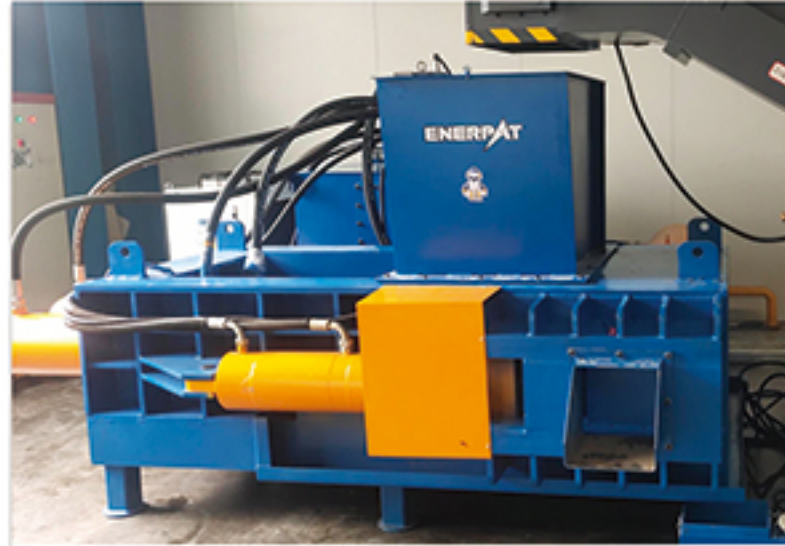


Success Case



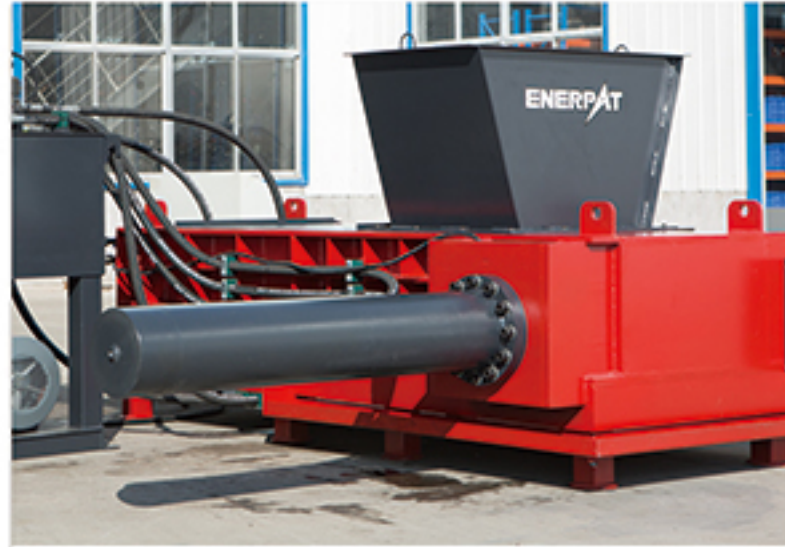
USA: AMB-H1075-250



TAIWAN: AMB-H2014-250



NEW ZEALAND: AMB-H1075-100



MEXICO: AMB-H2014-250



SOUTH AFRICA: AMB-H1075-100



AUSTRALIA: AMB-H1075-100

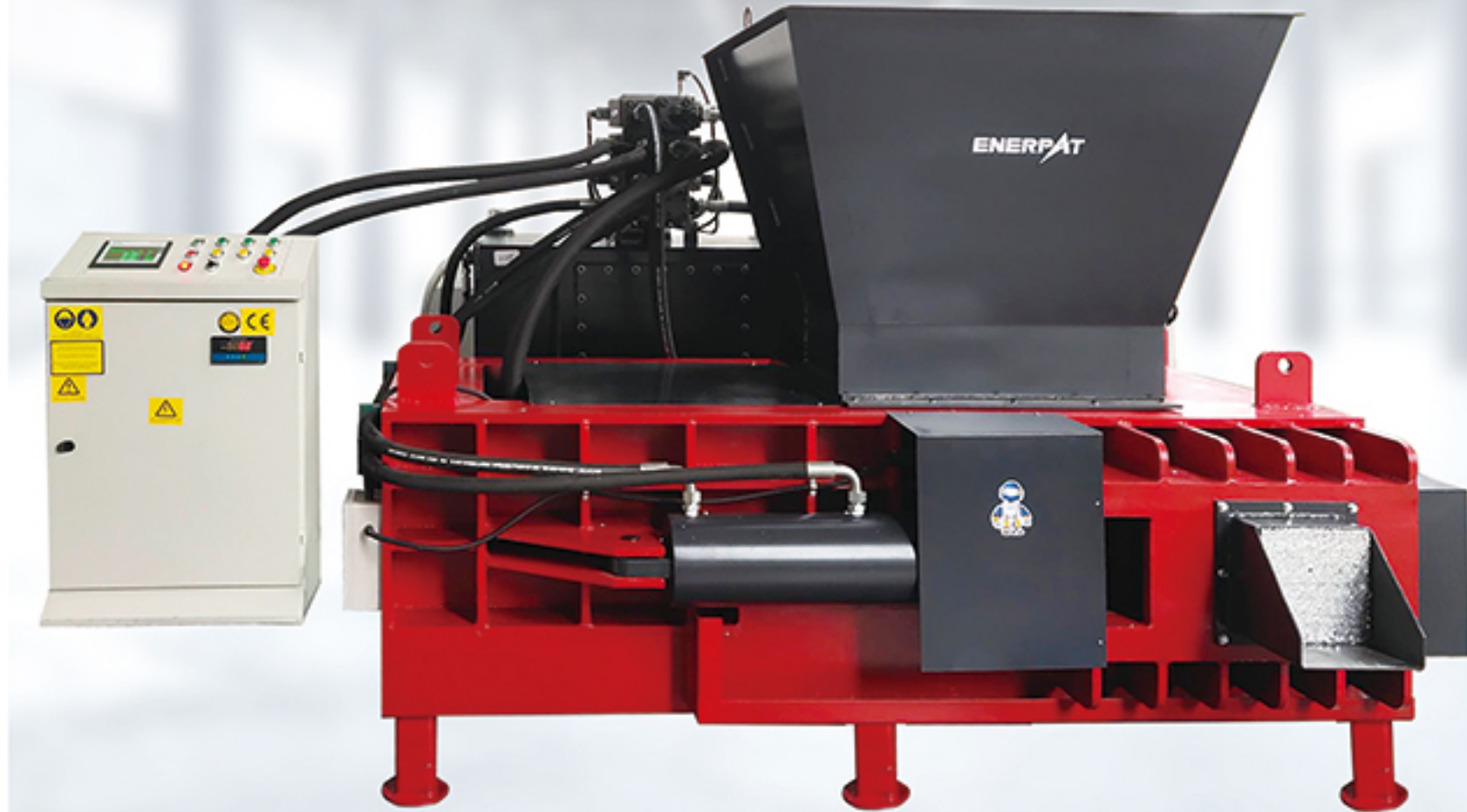
Model	AMB-H1075-100
Press Force (Tons)	100
Motor Power (KW)	30
Press Chamber (mm)	1000x750
Bale Size (mm)	300x300
Capacity (Bales/h)	60
Operation Type	Automatic

Model	AMB-H1510-160
Press Force (Tons)	160
Motor Power (KW)	37
Press Chamber (mm)	1500x1000
Bale Size (mm)	350x350
Capacity (Bales/h)	60
Operation Type	Automatic

Model	AMB-H1612-200	AMB-H2014-250
Press Force (Tons)	200	250
Motor Power (KW)	37	2x22
Press Chamber (mm)	1600x1200	2000x1400
Bale Size (mm)	350x350	400x400
Capacity (Bales/h)	60	60
Operation Type	Automatic	Automatic

ENERPAT

Global Waste Disposal System Supplier



AUTOMATIC METAL BALER



Email: info@enerpatgroup.com
 Email: enerpatcompany@gmail.com

Add: No 2, Xintai Road, Changqing Industry Zone, Rugao, Nantong, Jiangsu, China



ENERPAT GROUP UK
 ENERPAT UK. CHINA PRODUCTION BASE

Product Application



Before After

Metal Shavings



Before After

Steel Wires



Before After

Aluminum Extrusion



Before After

Oil Filters



Before After

Aluminum Chips



Before After

UBC Cans

- 1 Machine Structure
- 2 Hydraulic Valve Block
- 3 Customized Hopper Design
- A Hydraulic Power Pack
- B Air Conditioner Cooling System
- C Electrical Control System



- ENERPAT Hopper Type Auto Metal Baler designed for pressing light scrap metals like aluminum cans, metal turnings, metal chips, non ferrous, etc into compact bales. Big open type hopper accept continous feeding, no need to stop. Capacity from 1 ton/h to 10 tons/h. Adopting UK technology, 100% high quality with CE, ISO certification.

Baler Structure

- Choose the brand company and international standard steel plate.
- Using plasma CNC machines to make steel plate for Welding process.
- All steel parts are CO2 welded.
- Using the method of flaw detection to detect the quality of welding.



Pressing Cylinder

- Choose the brand company and international standard seamless steel pipe.
- All piston rods are chrome plated.
- Choose the British Hallite brand as the cylinder seal.



Open Feeding Hopper

- Big feeding hopper, accept customized design.
- Continous feeding, no need stop.



Electrical Control System

- Factory assembled, wired tested.
- Control wiring: minimum 2.5.
- SQ, nm, 600/1000V pvc insulated copper.
- Conductor colour coded as per IEC standards.
- Support touch screen control, PLC Schneider or Siemens brand.

