

MLT-X RANGE
Telehandlers



Handling your world

The Manitou Group was founded by the Braud family more than 60 years ago. Today, it has a global presence. The Manitou Group is the world leader in all-terrain material handling. It designs, manufactures, distributes and services equipment for construction, agriculture and many other industries.

The Group's product ranges include all-terrain fixed, rotating and heavy-load telehandlers; all-terrain, semi-industrial and industrial masted forklift trucks; wheel or track skid-steer loaders; access platforms; truck-mounted forklifts; warehousing equipment; and attachments.

Through its iconic brands - Manitou, Gehl and Mustang - distributed by a network of 1,400 dealers, the Group offers the best solutions to create optimum value for its customers.

Headquartered in France, the group registered in 2014 a revenue of 1,246 billion Euros in 140 countries and employs 3,300 people all committed to satisfying customers.



1958

Marcel Braud conceives the idea of the Manitou truck.

1972

Group enters foreign markets.

Sales partnership agreement signed with Toyota for exclusive distribution of Toyota industrial forklift trucks in France.

1981

Launch of first Manitou telehandler.

1984

Manitou floated on stock exchange.

1993

First MRT rotating telehandlers are sold.

1995

Launch of first range of access platforms.

1996

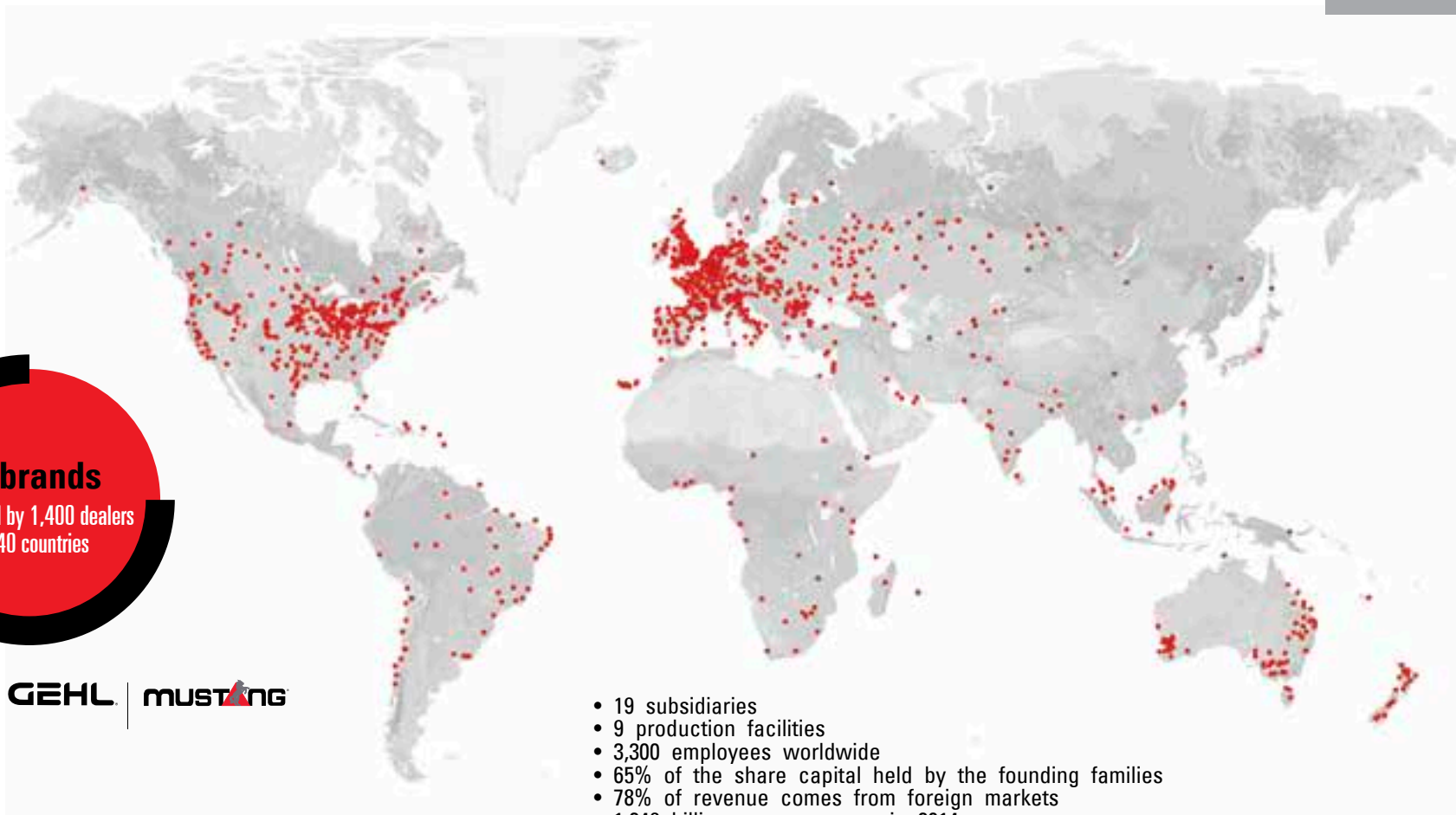
ISO 9001 certification obtained.

1998

Marcel Braud becomes Chairman of the Supervisory Board.

2006

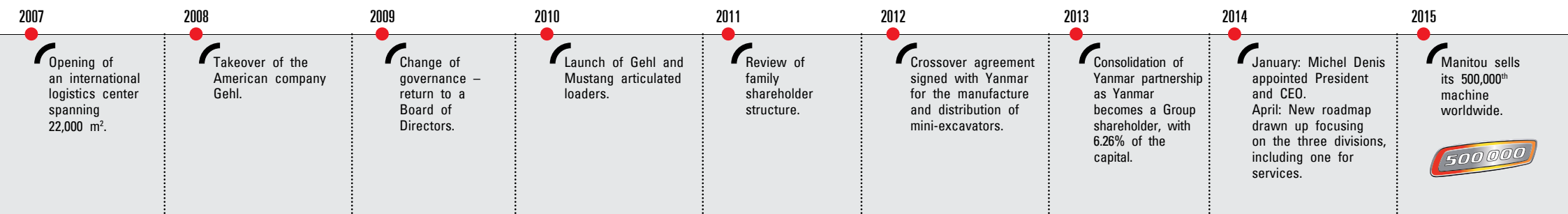
Manitou hits the 1 billion sales milestone.



3 brands
distributed by 1,400 dealers
in 140 countries

MANITOU | **GEHL** | **MUSTANG**

- 19 subsidiaries
- 9 production facilities
- 3,300 employees worldwide
- 65% of the share capital held by the founding families
- 78% of revenue comes from foreign markets
- 1.246 billion euros revenue in 2014





MANITOU

MANUSCOPIC

MANITOU

MLT-X



Manitou Telescopic Handlers

Thanks to a robust telescopic boom that maximize outreach and a multitude of attachments available, Manitou all-terrain telescopic handlers give you the best reliability, manoeuvrability and versatility on the market.



Working
offset up to
6.5 m

6 to 10_m
lifting height

Capacity from
2.5 to 6_t



High-performance machines

Being able to handle any load
in a wide work area and easily
maneuver around obstacles
means you're sure to increase
productivity.



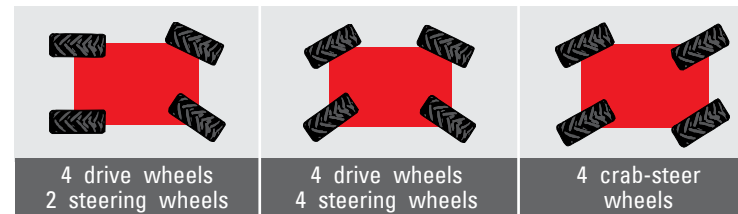
All-terrain machines

Manitou forklifts are designed to adapt to your needs and your environment, both inside and outside:

- agricultural profile tires
- high ground clearance
- optimal turning radius
- excellent pulling force
- optimized design (height and width) to suit your farm.



Three steering modes available for a **MAXIMUM MANOEUVRABILITY**



Comfortable machines

MLT-X's cabins offer greater comfort and ergonomics to maximise operators' productivity and efficiency.

Easy access; a spacious, well-designed cab; mechanical or pneumatic fabric seats; 360° visibility; adjustable steering column (height and depth); plenty of storage space; a JSM® (Joystick Switch and Move) single lever, and much more.





Manitou makes your daily operations easier. Manitou's JSM® allows you to benefit from all of the hydraulic functions of the machine with only one hand while your other hand controls the steering wheel for maximum safety.

- ❶ FNR (Front Neutral Reverse) switch
- ❷ Hydraulic attachment line
- ❸ Telescope: retraction and extension



Forward: boom lowers
 Backward: boom lifts
 Left: crowd
 Right: dump

Machines that are easy to use and maintain

- Easy maintenance thanks to the accessible engine and the positioning of parts that need regular upkeep.
- Reversible fan: maintenance of the radiator is easier to do.
- Maintenance reminders in the cab.



It's multi-functional!

The MLT-X range is perfectly suited to farming. The tires, engine powers and robustness of the machines are designed for intensive uses. Pulling a trailer, dropping feed, feeding livestock, cleaning a shed and more. There are so many tasks MLT-X machines can make easier.





MANITOU





Versatile machines

Manitou telehandlers are truly adaptable, as specially designed attachments can easily be added depending on your needs. We have a range of Manitou-approved attachments that are perfectly compatible with the MLT-X range so that our machines do everything you need.





**A
selection
of Manitou
attachments**

100 references

Choose the attachments that are right for you from more than 100 references.



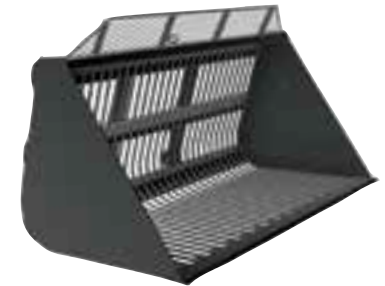
CBG Grapple Bucket

Versatile grapple bucket allowing for gripping and holding of farming materials (manure, silage, grains, etc.)



CRS Silage Facer Bucket

Allows silage to be unloaded onto the pile. Leaves a clean pit face and reduces fermentation.



BSB Sugar Beet Bucket

Designed for handling sugar beet and other roots/tubers, filtering out soil and other impurities.

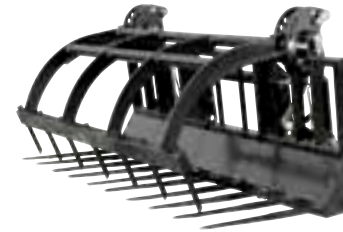


**PBE Wrapped Bale Clamp**

Its articulated structure means the clamp can adapt to bales of up to 1,000 kg without damaging them.

**FB Square Bale Fork**

A simple, high-performance tool for handling round and square bales.

**FFGR Manure Fork with Grapple**

Versatile fork for manure, bales, etc. Open the adjustable grapple for improved versatility.

**HBB Big Bag Handler**

Handles up to four big bags safely for increased efficiency when loading and unloading.







The model that's right for you!

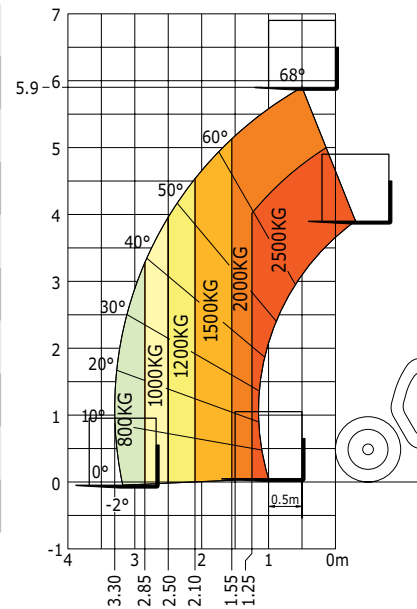
Choose from a wide range of forklifts with lifting capacities from 2.5 to 6 tons and lifting heights up to 10 meters. Options and finishes are also available to best suit your needs.

Super Compact



MLT-X 625

Transmission*	H/C/CVT	H
Engine power	HP (kW)	75 (55.4)
Engine brand	-	Kubota
Max. capacity	kg	2,500
Max. lifting height	m	5.9
Max. outreach	m	3.3
Dimensions without attachments (LxWxH)	m	3.3x1.82x2
Hydraulics	l/min	90
Unladen weight (with forks)	kg	4,922
Speed	kph	25

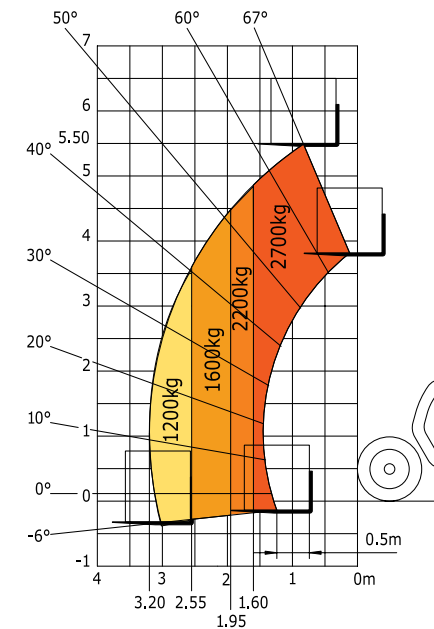


Compact



MLT-X 627

Transmission*	H/C/CVT	C
Engine power	HP (kW)	101 (74.5)
Engine brand	-	Perkins
Max. capacity	kg	2,700
Max. lifting height	m	5.50
Max. outreach	m	3.2
Dimensions without attachments (LxWxH)	m	4.69x2x2.06
Hydraulics	l/min	100
Unladen weight (with forks)	kg	5,935
Speed	kph	28



* H: Hydrostatic
 C: Torque converter
 CVT: Continuous Variable Transmission

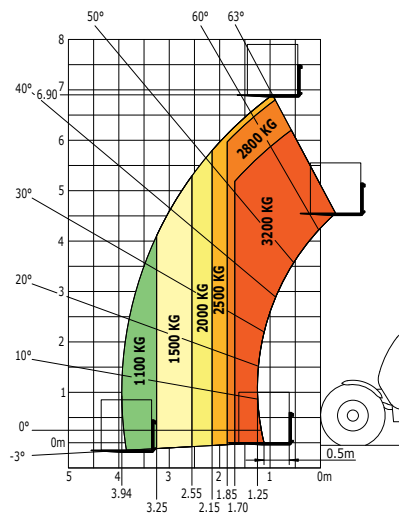


Versatile



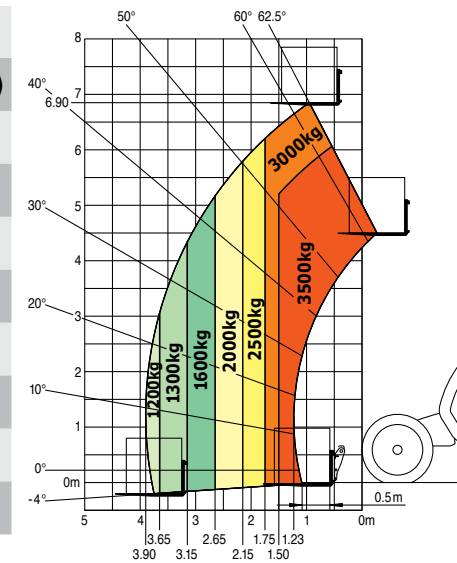
MLT-X 732

Transmission*	H/C/CVT	C
Engine power	HP (kW)	95 (70)
Engine brand	-	Perkins
Max. capacity	kg	3,200
Max. lifting height	m	6.9
Max. outreach	m	3.9
Dimensions without attachments (LxWxH)	m	4.87x2.24x2.3
Hydraulics	l/min	104
Unladen weight (with forks)	kg	6,845
Speed	kph	32



MLT-X 735

Transmission*	H/C/CVT	C
Engine power	HP (kW)	101(74.5)-124(91)
Engine brand	-	Perkins
Max. capacity	kg	3,500
Max. lifting height	m	6.9
Max. outreach	m	3.9
Dimensions without attachments (LxWxH)	m	4.87x2.24x2.3
Hydraulics	l/min	110 / 150
Unladen weight (with forks)	kg	7,075 / 7,100
Speed	kph	35 / 40



* H: Hydrostatic
 C: Torque converter
 CVT: Continuous Variable Transmission

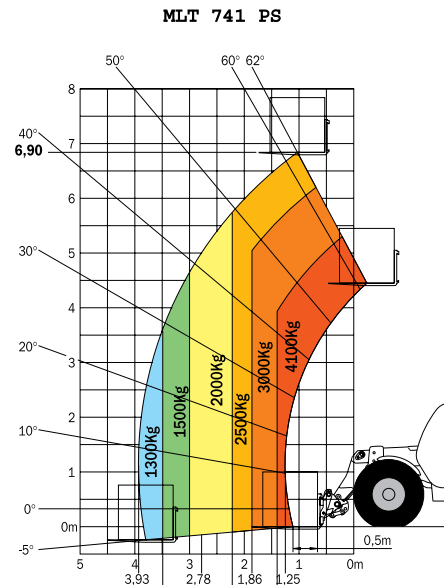


Versatile



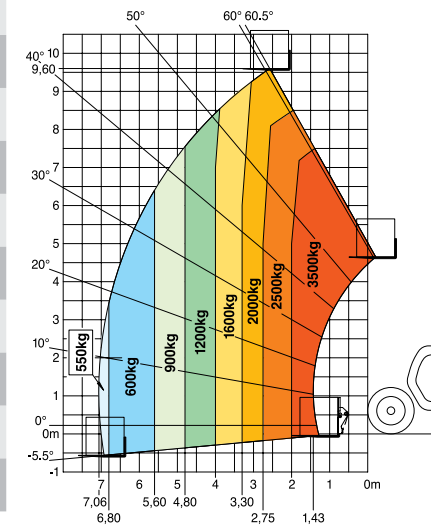
MLT-X 741

Transmission*	H/C/CVT	C
Engine power	HP (kW)	124 (91)
Engine brand	-	Perkins
Max. capacity	kg	4,100
Max. lifting height	m	6.9
Max. outreach	m	3.9
Dimensions without attachments (LxWxH)	m	4.92x2.4x2.3
Hydraulics	l/min	150
Unladen weight (with forks)	kg	7,495
Speed	kph	35



MLT-X 1035

Transmission*	H/C/CVT	C
Engine power	HP (kW)	101 (74.5)
Engine brand	-	Perkins
Max. capacity	kg	3,500
Max. lifting height	m	9.6
Max. outreach	m	7.06
Dimensions without attachments (LxWxH)	m	5.09x2.4x2.3
Hydraulics	l/min	110
Unladen weight (with forks)	kg	8,375
Speed	kph	35

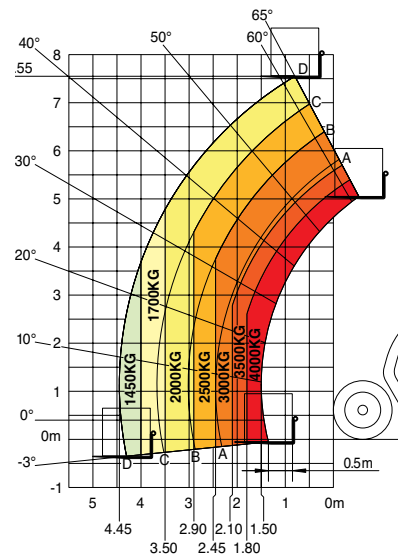


* H: Hydrostatic
 C: Torque converter
 CVT: Continuous Variable Transmission



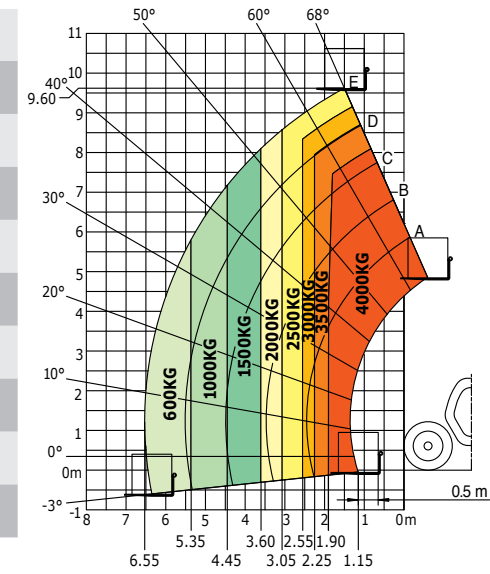
MLT-X 840

Transmission*	H/C/CVT	C
Engine power	HP (kW)	137 (102)
Engine brand	-	John Deere
Max. capacity	kg	4,000
Max. lifting height	m	7.55
Max. outreach	m	4.45
Dimensions without attachments (LxWxH)	m	5.37x2.39x2.4
Hydraulics	l/min	180
Unladen weight (with forks)	kg	8,740
Speed	kph	40



MLT-X 1040

Transmission*	H/C/CVT	C
Engine power	HP (kW)	137 (102)
Engine brand	-	John Deere
Max. capacity	kg	4,000
Max. lifting height	m	9.6
Max. outreach	m	4.45
Dimensions without attachments (LxWxH)	m	5.17x2.39x2.4
Hydraulics	l/min	180
Unladen weight (with forks)	kg	9,175
Speed	kph	40



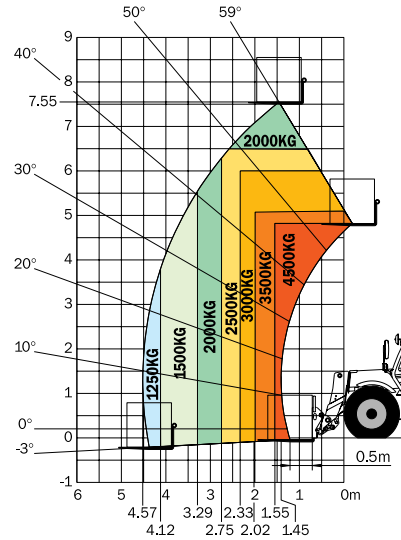
* H: Hydrostatic
 C: Torque converter
 CVT: Continuous Variable Transmission

Heavy Duty



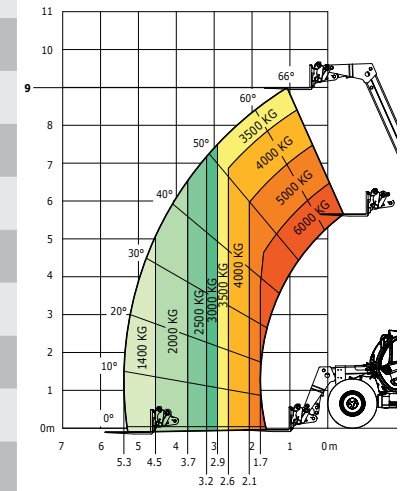
MLT-X 845

Transmission*	H/C/CVT	H / C
Engine power	HP (kW)	121 (90)
Engine brand	-	Mercedes
Max. capacity	kg	4,500
Max. lifting height	m	7.55
Max. outreach	m	4.57
Dimensions without attachments (LxWxH)	m	5.22x2.42x2.58
Hydraulics	l/min	150
Unladen weight (with forks)	kg	8,870 / 8,816
Speed	kph	28 / 33



MLT-X 960

Transmission*	H/C/CVT	CVT
Engine power	HP (kW)	137 (102)
Engine brand	-	John Deere
Max. capacity	kg	6,000
Max. lifting height	m	9
Max. outreach	m	5.3
Dimensions without attachments (LxWxH)	m	6.10x2.48x2.53
Hydraulics	l/min	180
Unladen weight (with forks)	kg	11,700
Speed	kph	40



* H: Hydrostatic
 C: Torque converter
 CVT: Continuous Variable Transmission



The MLT-X machines have a variety of transmissions and gearboxes to suit all needs:

- The torque converter can be fitted with:

Mechanical gearbox	Powershift	Automatic M-Shift
4 gears	6 gears	5 gears

- Hydrostatic transmission with low or high gears
- Continuous Variable Transmission (CVT)

You're sure to find the machine that's right for you in the MLT-X range.



Options



The ECS (Easy Connect System)

The ECS (Easy Connect System) lets you disconnect attachments without turning off the engine, making it quick and easy to change your hydraulic accessories. This saves you time, and makes changing attachments less arduous.



Suspension and comfort

The boom suspension softens movements : it protects the telescope parts and increases the driver's comfort.

Air-conditioning offers driving comfort in all weather conditions.

The pneumatic seat provides improved operator comfort thanks to a better absorption of vibrations.



Tires

Manitou offers several kinds of tires depending on the purpose of your machine, your terrain and any specific needs you may have.



Hydraulic locking of the attachment

The hydraulic locking of the carriage allows you to change and lock on/off the attachment without leaving the machine.

Choose your finishing level

Our standard machine already has plenty of features to meet your needs but, here at Manitou, we like to treat each customer individually. That's why you can choose from three types of finish: Classic, Premium and Elite.



CLASSIC

- Mechanical cloth seat
 - Rear-view mirror
 - Radio player
 - Automatic radiator dust removal system...
-

PREMIUM

- Pneumatic cloth seat
 - CD/MP3 radio
 - Air-conditioning
 - Easy Connect System (ECS)
 - Automatic radiator dust removal system...
-

ELITE

- Low frequency pneumatic cloth seat
 - Bluetooth radio
 - Air-conditioning
 - Boom suspension
 - Easy Connect System (ECS)
 - Automatic radiator dust removal system...
-

Finishing level may vary according to model and option availability.





Manitou is here to help!

So that you can benefit from an operational forklift all year long, Manitou offers a wide range of products and services that are suited to all your needs.



Everyday expertise and service

Your Manitou dealer guarantees a complete range of services at all stages of your machine's life. The dealer will support you and adapt to your needs in order to provide the best solution.



1,400 dealers at your service

The Manitou network is present in more than 120 countries. In total, there are more than 2,000 expert technicians who are specially trained in Manitou technology and who are at your service to assist with purchasing or after-sales.

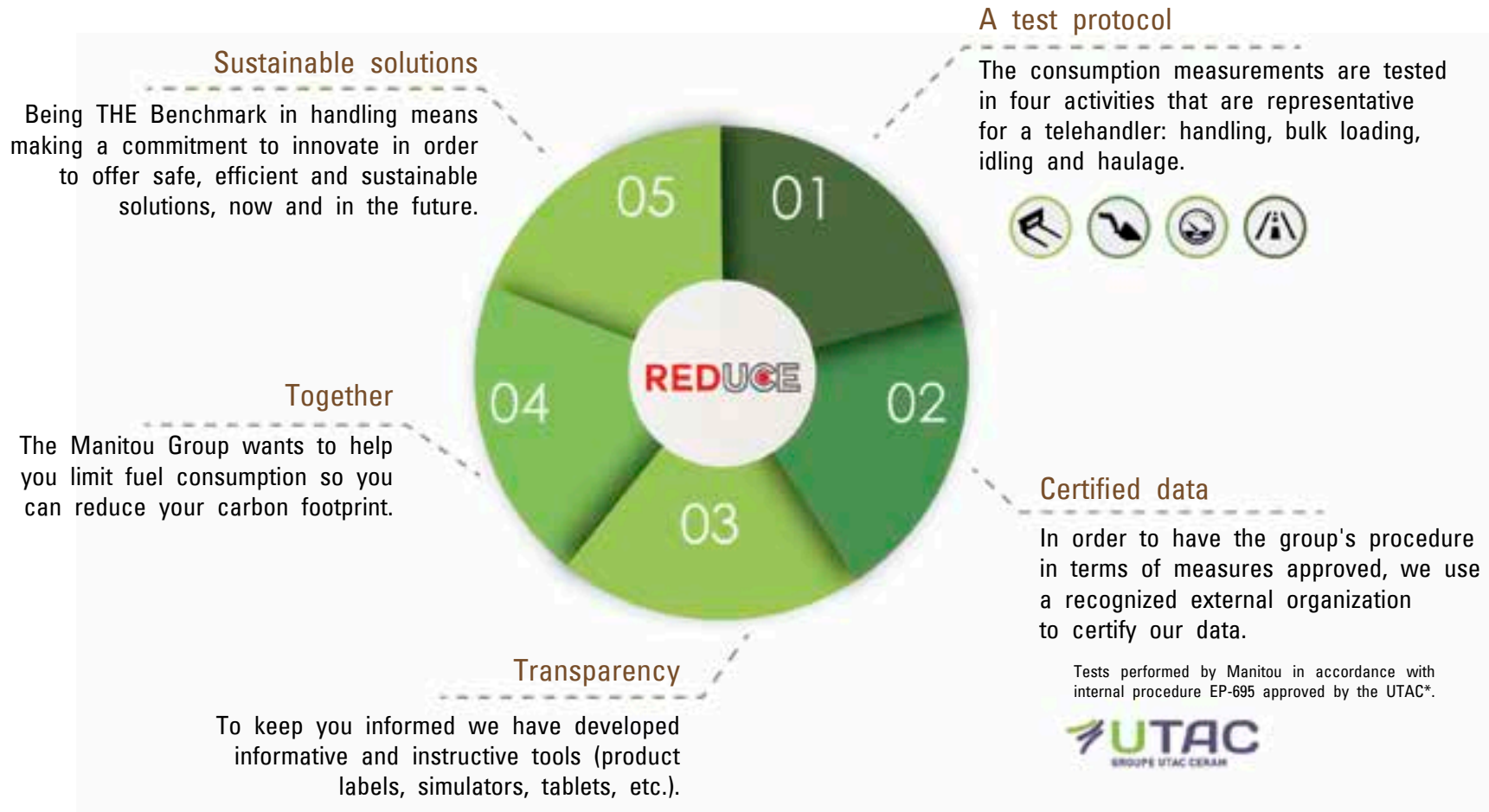


- Network of dealers**
A network of experts at your service, whatever your activity (agriculture, construction, industry).
- Maintenance contracts**
Three levels of contract that are tailored to your needs: Initial, Advanced and Excellence. Entrust the maintenance of your equipment to your dealer.
- Financing**
Lease or buy? Manitou Finance helps you choose the most suitable financing solution for your activity. Why look elsewhere?
- Warranty extension**
With Maniplus, you can extend the cover of your Manitou for up to 5 years.
Use your equipment with peace of mind.
- Fleet management**
Easy Manager is a simple and flexible tool for managing, optimizing and securing the operational monitoring of your machines.
- Second-hand**
In the market for second-hand equipment? The Manitou network offers a wide range of resources so you get the machine you need at the right price. Just visit used.manitou.com, our dedicated reference site for second-hand machines.
- Original spare parts**
With more than 70,000 references available, your Manitou agent provides expertise and service on a daily basis!

The REDUCE Program

The handling sector does not yet have a standardized cycle for measuring the fuel consumption of machines. However, the Manitou Group has established an internal protocol which is accessible to everyone and shows Manitou's own consumption measurements (l/h) and CO2 emissions (kg/h).

In order to make procedures more reliable, this data is controlled and approved by an independent organization, the UTAC*, which specializes in approving of vehicles and equipment.



Here to help

The Manitou Group wants to help you save fuel and reduce the carbon footprint of your machines with these 23 easy-to-follow tips. See more advice at reduce.manitou.com.



Choose the right level of power for your needs.



Switch off your engine after three minutes sat idling.



Best engine performance occurs with maximum torque.



Choose controllable and reversible fan systems.



Use 'smart' automated transmissions.



Close doors and windows when using air-conditioning.



Choose LED headlights.



Use the right tires for your environment.



Ensure you have the right tire pressure.



Check that the parking brake is set.



Adjust your maximum trailing load.



Adapt your attachments to your machine.



Respect maintenance schedules.



Ensure regular lubrication.



Make sure you know your machine's fuel consumption and emissions.

Your dealer:



Registered office

B.P. 249 - 430 rue de l'Aubinière - 44158 Ancenis Cedex - France

Tel.: 0033 (0)2 40 09 10 11 - Fax: 00 33 (0)2 40 09 10 97

