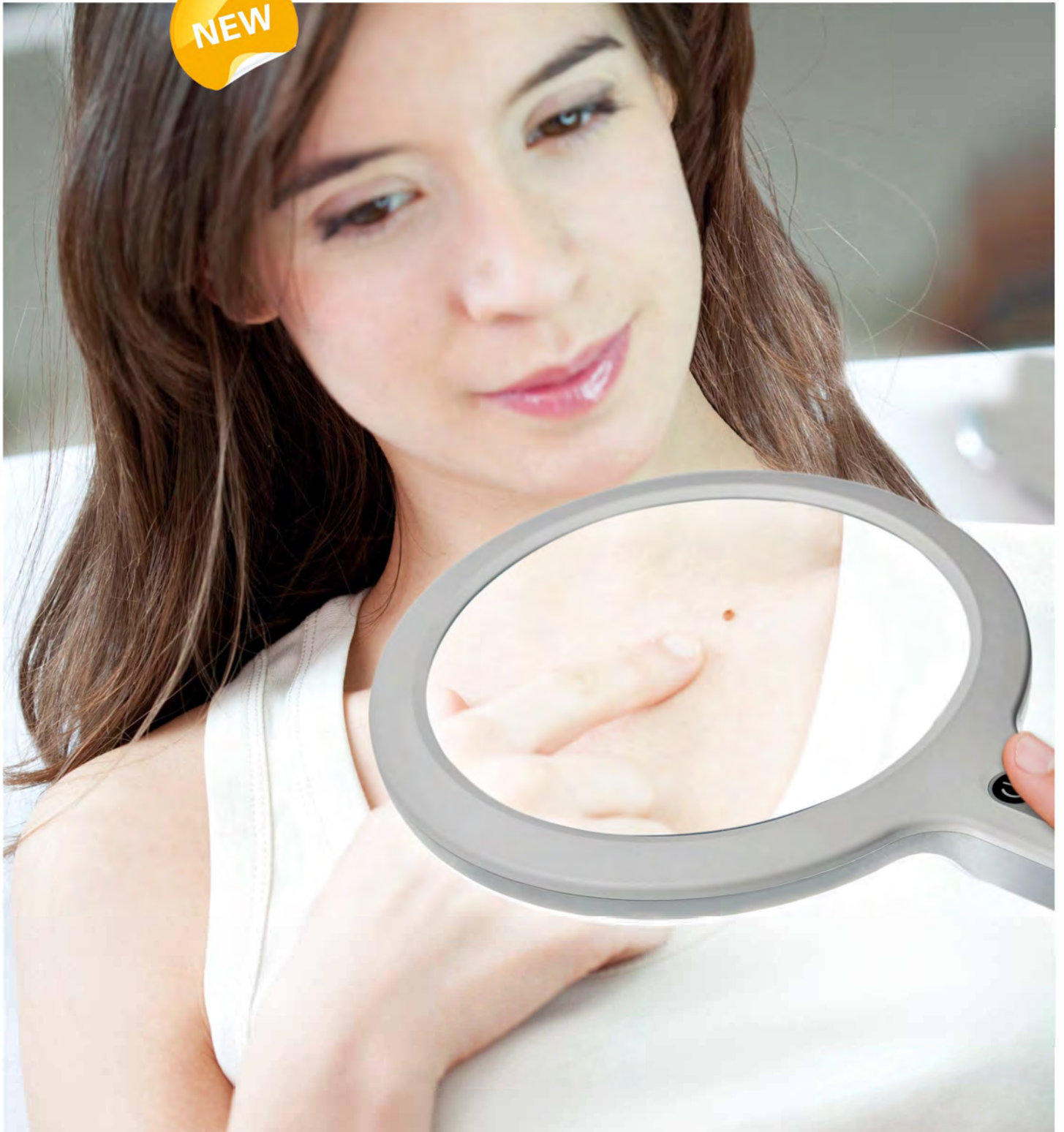


---

**OPTICLUX**  
LED MAGNIFIER LUMINAIRE



reddot award 2018  
winner



### Organic design. Outstanding quality of light.

The new OPTICLUX Hand magnifier luminaire is soon to be one of the medical practitioner's most valuable devices. Designed with first-rate performance and ergonomic comfort in mind, OPTICLUX Hand offers excellent color rendering properties, a large daylight quality light field, as well as stepless dimming at your fingertips. In addition, the powerful Wood's light feature is ideal for veterinary or any dermatological task. Controls are easily accessible and a long battery life makes this a maintenance-free, dependable tool of the trade.



## OPTICLUX Hand HAND-HELD VERSION WITH ERGONOMIC HANDLE



#### Ergonomic

Optimal handling for right- and left-handers



#### Easy to handle

Keypad on the handle with stepless dimming controls



#### Outstanding light

Unique light output with 8 000 lx at 0.15 m for a true-to-life color rendering



suitable for  
Laboratories, medical  
practices, clinics, etc.

---

**APPROVED  
MEDICAL DEVICE**

---

compliant with  
EN 60601-1

WARRANTY

**5 YEARS**

FOR ALL ELECTRICAL  
COMPONENTS

★★★★★



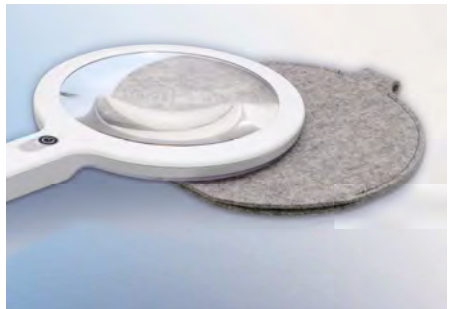
**Battery powered**

Up to 3 hours runtime, convenient charging through USB-C port



**Especially for dermatology \***

Two lighting modes in one device:  
optional Wood's light for examining skin variations,  
lesions and pigment changes



**Optimally protected**

High quality felt cover protects the lens from scratches and sun exposure

\*Depending on version

**Your working comfort is our mission.**

OPTICLUX has everything a modern magnifier luminaire is meant to have: a robust magnifier with 1.9x magnification, the latest LED modules, ergonomically tested arm joints and intuitive operation. OPTICLUX's biggest plus is its daylight-quality light field, its outstanding color rendering properties and its maintenance-free life cycle. As an approved medical device, it can be versatilely used in dermatology, human medicine, dentistry and veterinary medicine, in laboratories and for monitoring sterilized products.

## OPTICLUX WITH SUPPORT ARM SYSTEM



**Ergonomic handling**

Spring balanced arm and friction joints allow smooth handling without the luminaire head sinking



**Long service life**

Premium scratch-resistant plastic lens and precision components ensure strong durability



**Flexible positioning**

Long luminaire arm allows a broad reach up to 142 cm radius





suitable for  
Laboratories, medical  
practices, clinics, etc.

**APPROVED  
MEDICAL DEVICE**

compliant with  
EN 60601-1

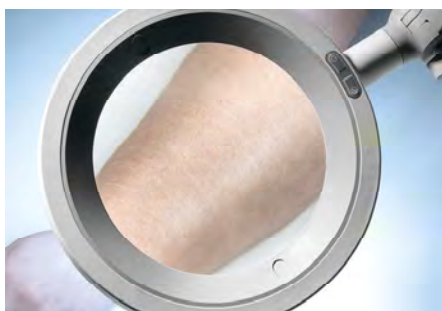


**reddot award 2018  
winner**



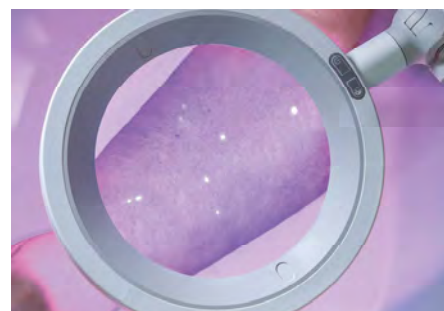
#### **Excellent light field**

Due to large magnifier diameter ( $\varnothing$  160 mm, 3.5 dpt) and strong, dimmable illumination (6 000 lx at 0.15 m)



#### **Reliable color rendering**

Very good 6 500 K LEDs ensure less shadow formation and optimal color rendering



#### **Special for dermatology \***

Two lighting modes in one device: optional Wood's light for examining fluorescent lesions and pigment changes

\*Depending on version





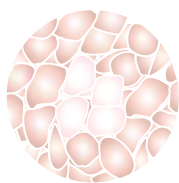
### OPTICLUX with Wood's light.

The special model variant for dermatologists, veterinarians and forensic medicine combines two lighting modes in one device: daylight white illumination and Wood's light. This means that different examinations can be performed with just one light. Other Wood's luminaires require the room to be completely darkened. Thanks to powerful BLB LEDs, the Opticlux doesn't need this. That means more time for the patient.

For radiation of certain dermatomycoses to obtain diagnostic indications based on the fluorescence that occurs:

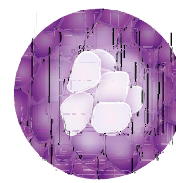
- ERYTHRASMA (red fluorescence)
- MICROSPORIA (weak green fluorescence)
- FAVUS (bilious green fluorescence)
- TRICHOBACTERIOSIS AXILLARIS (yellow ochre colored fluorescence)
- PITYRIASIS VERSICOLOR (yellow ochre colored fluorescence)
- TUBEROUS SCHLEROSIS (blue-white fluorescence versus normal skin)
- VITILIGO (blue-white fluorescence of depigmented areas)
- SCABIES (gray-white mite tracks)

Also for fluorescence diagnostics (FD) for in-vivo diagnostics of dysplastic tissues and surface tumors in connection with local or systemically applied pigment, such as PPIX or 5-ALA.



**LED light  
& dimming**

Skin under daylight-simulating  
LED light



**Wood's light  
(365 nm)**

Accurate diagnosis: Skin changes appear differently under Wood's light,  
such as favus, types of intertrigo or erythrasma

# ONE MAGNIFIER LUMINAIRE. MANY APPLICATIONS.



## Dermatologists

Optimal examination conditions:

- Large magnifier diameter
- Ergonomic handling
- Very good color rendering

The Wood's light version is recommended for optimal diagnosis of skin diseases.



## Hospitals, outpatient clinics and practices

Other uses:

- Ideal magnification for inspecting sterilized goods
- Approved medical device for examinations
- Minor treatments
- Outstanding light quality and color rendering properties

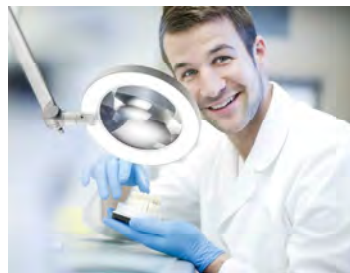


## Veterinarians

Free hand:

- Flexible mounting on ceiling, wall or roller stand
- Large light field
- Optimal magnification for examination and treatment of various animals

The Wood's light version is recommended for optimal diagnosis of skin diseases.



## Dental technicians

Outstanding lighting properties:

- Step-free dimming
- 3.5-dpt magnification
- Excellent color authenticity



## Laboratories

Details at a glance:

- Daylight-white LED light with 1.9x magnification
- Very homogeneous light field
- Precise, stable positioning with no risk of the luminaire sinking



## Quality control

Detect subtleties:

- Very bright, dimmable light with optimal color rendering
- Large magnifier diameter
- Distortion-free magnification supports systematic quality control





**What do the CRI values mean?**



Ra = 100



Ra = 95

**OPTICLUX**

CRI 100 =  
Full representation of the color spectrum



**What do the color rendering properties mean?**

In medicine, the red test color R9 plays a crucial role, because differentiation of various red tones in tissues and blood is especially important.

R13 is the "skin tone" test color and is generally very important in skin treatments (for better recognition of veins and blood vessels), especially in medical practice and cosmetics.

**Test color R9**



negative



positive

**Test color R13**



negative



positive

# TECHNICAL DATA



[www.derungslicht.com/opticlux](http://www.derungslicht.com/opticlux)

## OPTICLUX with arm system

- Color temperature daylight white 6,500 K \*
- Scratch-resistant plastic lens with 3.5 diopters
- Color rendering properties CRI = 95
- Homogeneous and bright light field \* (6,000 lx at 0.15 m)
- Continuously dimmable
- Universal fastening
- High quality, durable components
- Optionally with Wood's light: Maximum value at 365 nm
- Maintenance-free



ceiling version



version with pin for versatile mounting



[www.derungslicht.com/opticlux-hand](http://www.derungslicht.com/opticlux-hand)

## OPTICLUX Hand

### Hand-held magnifier luminaire

- Color temperature daylight white 6,500 K \*
- Scratch-resistant plastic lens with 3.5 diopters
- Color rendering properties CRI = 95
- Homogeneous and very bright light field \* (8,000 lx at 0.15 m)
- Continuously dimmable
- Optionally with Wood's light: Maximum value at 365 nm
- USB-C interface
- 3 hours of battery life
- Maintenance-free
- Including high quality felt case



Hand-held  
magnifier luminaire

Illumination intensity  
\* -10% / +20% tolerance

# ACCESSORIES

## Custom-fit lens cover

included with every delivery

Application:

easy fixation on arm system,  
thanks to click function



### ROLLER STAND RL

Material	Steel
Composition	<ul style="list-style-type: none"> <li>- Tube: white</li> <li>- Base: plastic</li> <li>- Casters: plastic double casters, with 5 brakes</li> </ul>
Dimensions	1.0 m; Ø 700 mm
Weight (net)	7.5 kg
for pin Ø	16 mm with removal guard and cable suspension device
<b>Order number</b>	<b>D15.595.000-00656247</b>



### EXTENSION ARM

Material	Powder-coated steel / steel pipe
Dimensions	400 m, Ø 16 cm
Weight (net)	approx. 0.65 kg
for pin Ø	16 mm with removal protection
Capacity	2.5 kg
<b>Order number</b>	<b>D13.363.000-00647314</b> pure white



### RAIL MOUNTING

Material	Aluminum
Wall rail system	25-35 x 8-10 mm
<b>Order number</b>	<b>D13.269.000-007069</b>

### TABLE CLAMP

Material	Polyamide steel
<b>Order number</b>	<b>D14.228.000-00625467</b> black

### WALL BRACKET

Material	Polyamide GF
<b>Order number</b>	<b>D13.231.000-00522182</b> pure white

**HEADQUARTERS GERMANY**

Herbert Waldmann GmbH & Co. KG  
 Peter-Henlein-Straße 5  
 78056 VILLINGEN-SCHWENNINGEN  
 GERMANY  
 Telephone +49 7720 601-0  
 Telephone +49 7720 601-100 (Sales)  
 Fax +49 7720 601-290  
 www.waldmann.com  
 sales.germany@waldmann.com

**FRANCE**

Waldmann Eclairage S.A.S.  
 Zone Industrielle  
 Rue de l'Embranchement  
 67116 REICHHSTETT  
 FRANCE  
 Telephone +33 3 88 20 95 88  
 Fax +33 3 88 20 95 68  
 www.waldmann.com  
 info-fr@waldmann.com

**ITALY**

Waldmann Illuminotecnica S.r.l.  
 Via della Pace, 18 A  
 20098 SAN GIULIANO MILANESE (MI)  
 ITALY  
 Telephone +39 02 98 24 90 24  
 Fax +39 02 98 24 63 78  
 www.waldmann.com  
 info-it@waldmann.com

**THE NETHERLANDS**

Waldmann B.V.  
 Lingewei 19  
 4004 LK TIEL  
 THE NETHERLANDS  
 Telephone +31 344 631019  
 Fax +31 344 627856  
 www.waldmann.com  
 info-nl@waldmann.com

**AUSTRIA**

Waldmann Lichttechnik Ges.m.b.H.  
 Gewerbepark Wagram 7  
 4061 PASCHING/LINZ  
 AUSTRIA  
 Telephone +43 7229 67400  
 Fax +43 7229 67444  
 www.waldmann.com  
 info-at@waldmann.com

**SCANDINAVIA**

Waldmann Ljusteknik AB  
 Skebokvarnsvägen 370  
 124 50 BANDHAGEN  
 SWEDEN  
 Telephone +46 8 990 350  
 Fax +46 8 991 609  
 www.waldmann.com  
 info-se@waldmann.com

**SWITZERLAND**

Waldmann Lichttechnik GmbH  
 Benkenstrasse 57  
 5024 KÜTTIGEN  
 SWITZERLAND  
 Telephone +41 62 839 1212  
 Fax +41 62 839 1299  
 www.waldmann.com  
 info-ch@waldmann.com

**USA**

Waldmann Lighting Company  
 9 W. Century Drive  
 WHEELING, ILLINOIS 60090  
 USA  
 Telephone +1 847 520 1060  
 Fax +1 847 520 1730  
 www.waldmannlighting.com  
 waldmann@waldmannlighting.com

**CHINA**

Waldmann Lighting (Shanghai) Co., Ltd.  
 Part A11a, No. Five Normative Workshop  
 199 Changjian Road, Baoshan  
 SHANGHAI, P.R.C. 200949  
 CHINA  
 Telephone +86 21 5169 1799  
 Fax +86 21 3385 0032  
 www.waldmann.com.cn  
 info-cn@waldmann.com

**SINGAPORE**

Waldmann Lighting Singapore Pte. Ltd. 77A  
 Neil Road  
 SINGAPORE 088903  
 SINGAPORE  
 Telephone +65 6275 8300  
 Fax +65 6275 8377  
 www.waldmann.com  
 sales-sg@waldmann.com

**List of references**

The images in this brochure originate from the following providers:  
 Title: shutterstock  
 Page 4-5: shutterstock  
 Page 8: alamy stockphotos, masterfile, istockphoto, unsplash, deposit  
 Page 9: 123rf.com  
 Product and reference photos from Jerry Gross Fotostudio AG, Switzerland. All other photos and graphics originate from Derungs Licht AG and the Waldmann Group.



**HOSPITAL PRODUCTS AUSTRALIA**  
 Unit 4, 6-8 Byfield Street  
 MACQUARIE PARK NSW 2113  
 1300 HPAUST | E: info@hpaust.com | www.hpaust.com

Center of Expertise for Care & Health:

**DERUNGS LICHT AG**

Hofmattstrasse 12  
 9200 Gossau  
 Switzerland  
 Phone +41 71 388 11 66  
 Fax +41 71 388 11 77  
 www.derungslicht.com  
 mailbox@derungslicht.com

Derungs Licht AG is a member of the  
 Waldmann Group.



DB009V120  
 © Derungs Licht AG • D60: 7700 0008075 81 -03/2020 - subject to change without prior notice - Printed in Germany  
 ENG