

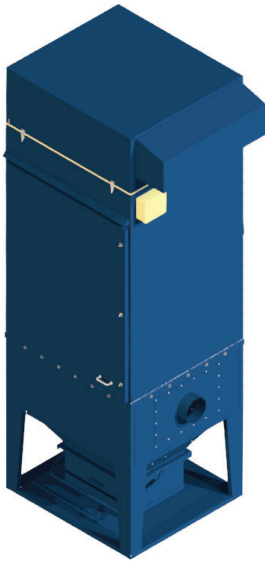


Scan for full product information

Auto M-Z Bag dust collector

The Auto M-Z series is a robust, free-standing filter range with an automatic shaker cleaning system. It is the latest model based upon over thirty years of continuous production experience. It is designed for intermittent use, where the filter can stop occasionally for cleaning off line.

Auto M-Z standard version



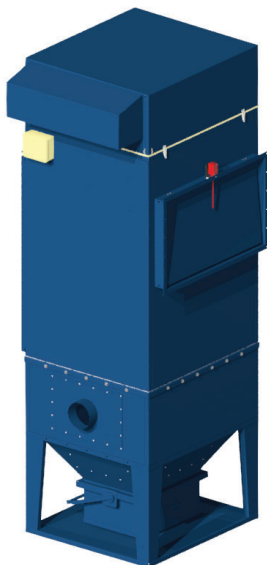
Advantages

- Access for maintenance from the front of the unit.
- Dust bin with quick release mechanism.
- ATEX certified for explosion dusts in categories St1, St2 and St3. Flameless explosion panel on request.
- Efficient, automatic, electric motor driven shaker mechanism. Compressed air not required.
- Neat appearance suitable for commercial and educational applications.
- Weather proof.

Technical Parameters

- Maximum working temperature 80°C (+60 for ATEX version).
- Maximum negative pressure 4000 Pa.
- Maximum positive pressure 1500 Pa.
- Filter area from 7.5 to 90 m².
- Wide range of filter materials.
- Integral, high efficiency fan range from 0.75 kW to 15 kW.
- Versatile inlet connections including QF-type ducting.
- All electrical connections pre-wired to terminal box on unit.

Auto M-Z ATEX version



Options

- Bin balance kit available to enable plastic bin-liners to be used.
- Pre-separation section for bulky or fibrous dusts.
- Spark trap on inlet.
- Open base venting unit with or without fan assistance non ATEX version.
- Built in safety filters type H13 non ATEX version.
- Control cabinets with frequency converter.

Accessories

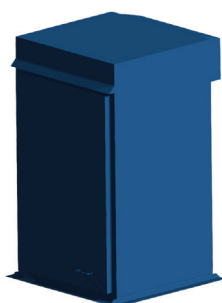
- Air silencers with top or side discharge.
- Weather cowl for silencer.
- Fan-shaker controllers.
- Explosion panel alarm switch.
- Differential pressure switch or indicator.



Pre-separation section

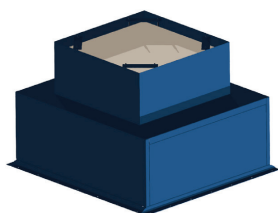
This section fits between the hopper and is delivered as an integral part of the hopper. The inlet may incorporate a spark trap if specified.

A pre-separation section is beneficial for lightweight dusts and higher dust loadings, as it provides a greater volume below the filter bag. The pre-separation section increases the total unit height by 500 mm for all units.



Venting unit

This unit has no hopper, but is mounted directly onto the vessel or silo to be ventilated. It is fitted with a mounting flange. It may be fan-assisted, or without fan. In this case the clean air outlet is at the back, with a weather cowl. The fan-assisted version should be fitted with a standard silencer and weather cowl for outdoor location. The shaker motor is normally located inside the filter body.



Safety filter

The safety filter is designed as an absolute filter for indoor installations. The safety filter is equipped with H13 class filter cartridges according to EN 1822, which is mounted in the frame.

Bin-balance

The bin-balance device balances the pressure between the bin and the hopper. It enables plastic bin liners to be used to aid the clean disposal of waste. The flexible connecting tube is long enough to enable complete withdrawal of the bin.

