

## MySommelier's App. How to use it.

The screenshot shows the MySommelier app interface. At the top, there is a search icon and a magnifying glass icon. Below the search bar, there are two tabs: 'Store' and 'Serve'. A grid of 8 bottle slots is visible, with the first slot containing a bottle of Brunello Di Montalcino. The app displays a 'STORE' temperature of 15° and a 'SERVE' temperature of 6°. A list of wine bottles is shown below, including Brunello Di Montalcino (2018 - Col d'Orcia), Chianti (2017 - Castelvechi), and Barbaresco. The app also features a slider to change the refrigeration mode and a lightbulb icon to illuminate the bottle.

Use the magnifying glass to search your desired wine and to illuminate it

Open the automatic crystals of your selected MySommelier

Switch from one level to another Remember: first start from the bottom

Use the slider on the Home screen to change the refrigeration mode of your wines. The Store mode sets a single temperature throughout the MySommelier useful for storing wine. Conversely, in Serve, MySommelier will set a different temperature on each level to serve the wine at the right temperature.

This is the level section

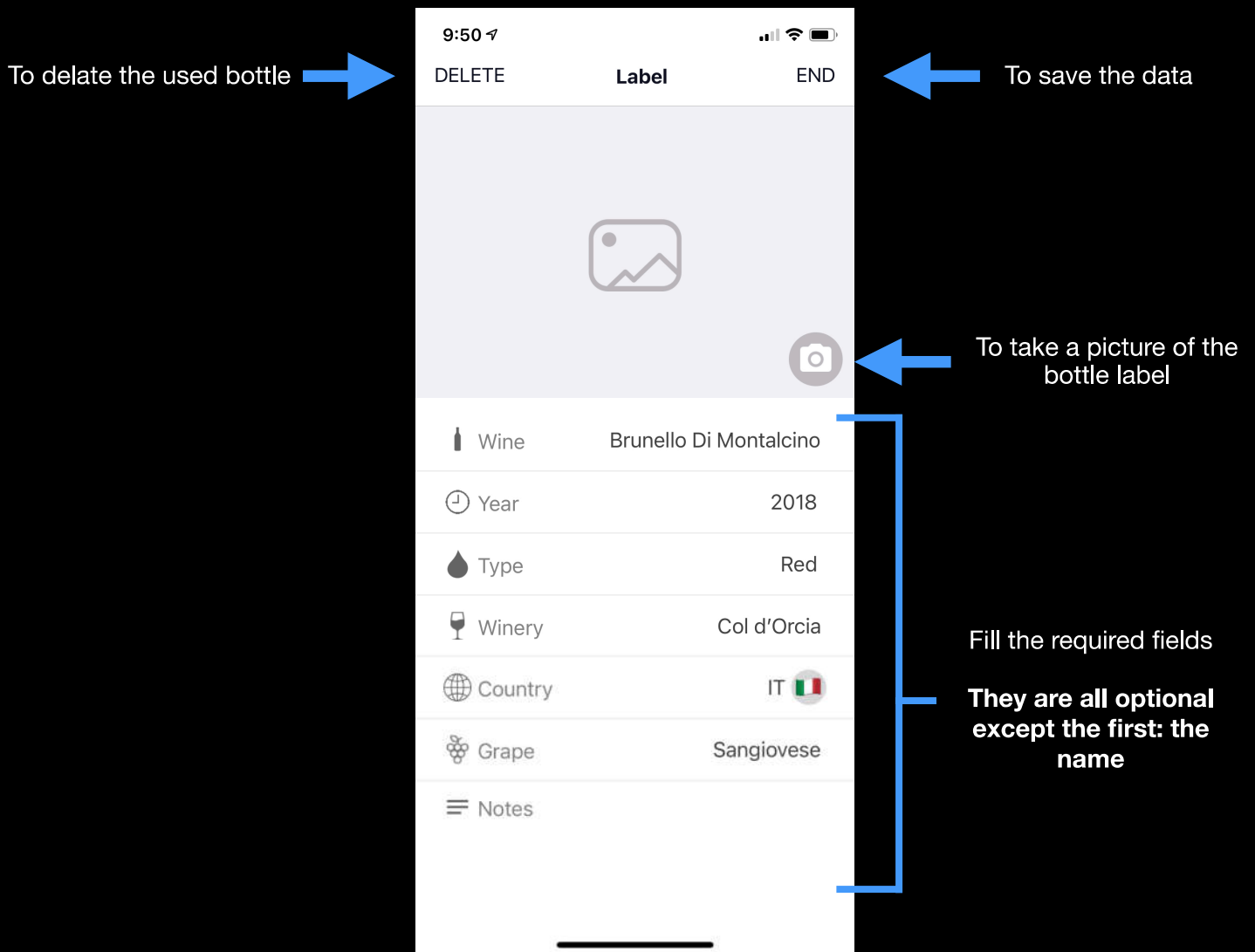
The **store** temperature, when selected, set a single temperature you choose in MySommelier.

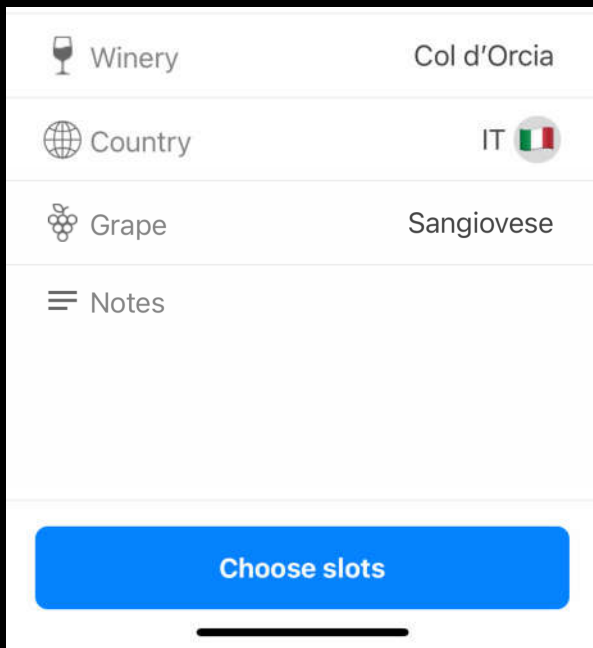
The **serve** temperature, when selected, set a dedicated temperature for each level. The temperature must be set from cold (1) to warm (8).

To add a new bottle tap on one empty slot

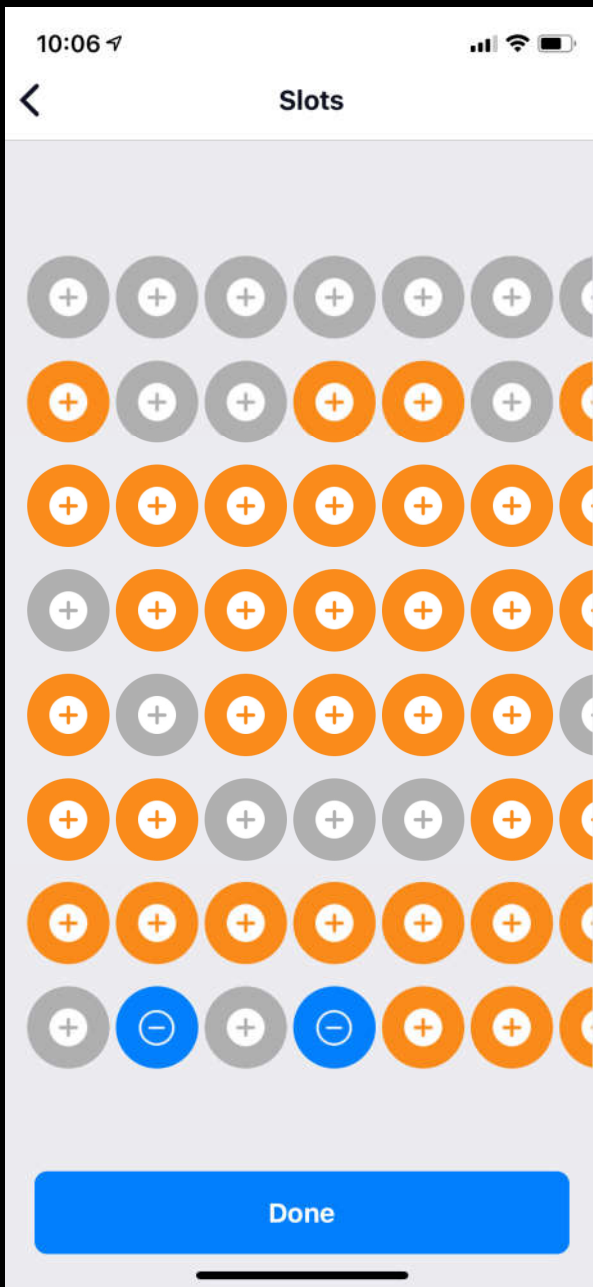
When the wine is present the ring will be illuminated with the color of the type of the temperature

# Wine Slot



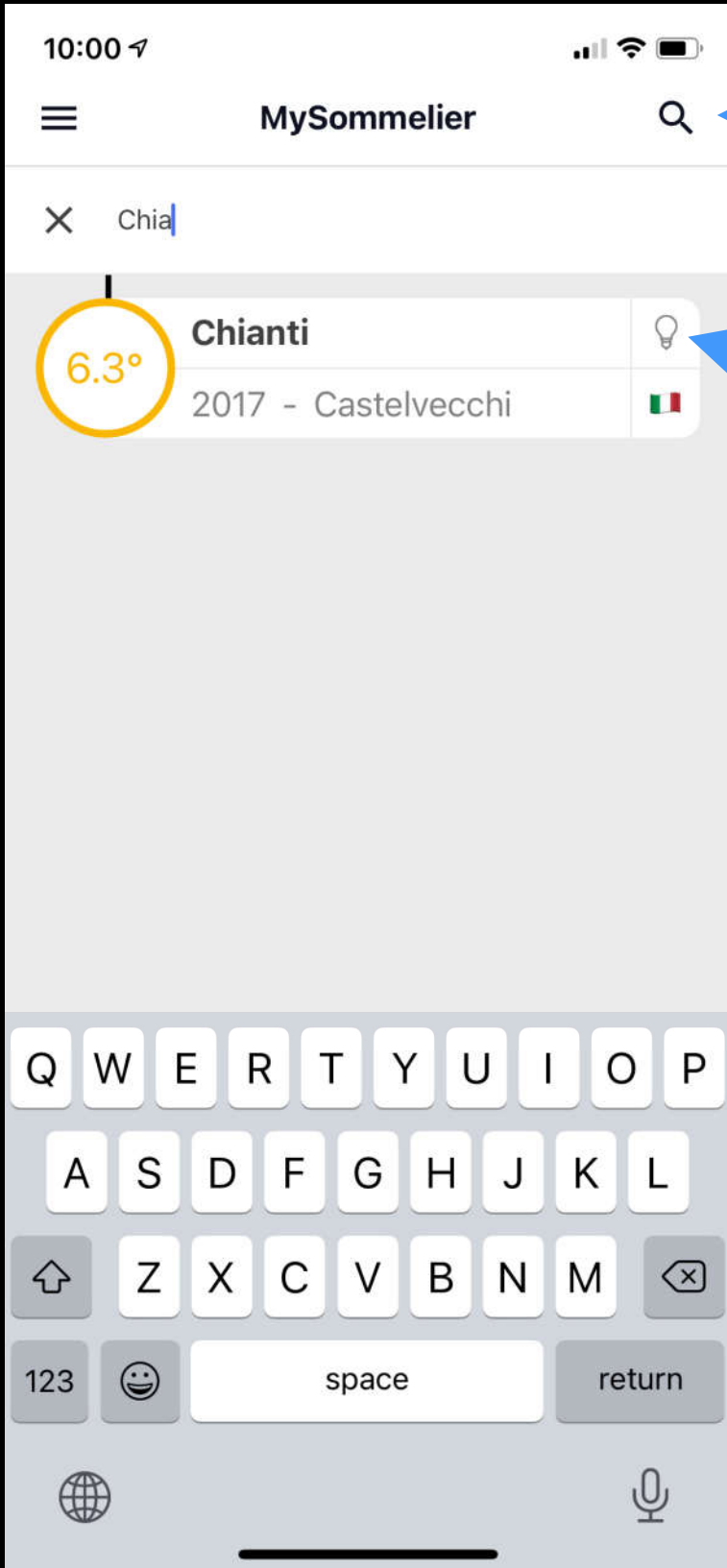


To add the same bottle in more slots press on "Choose slots"



Then press on the grey plus button to fill the slots, the orange plus button to overwrite the data on an existing bottle or the blue minus button to remove from the slot the bottle. After that press "Done" to save.

# Search bottles

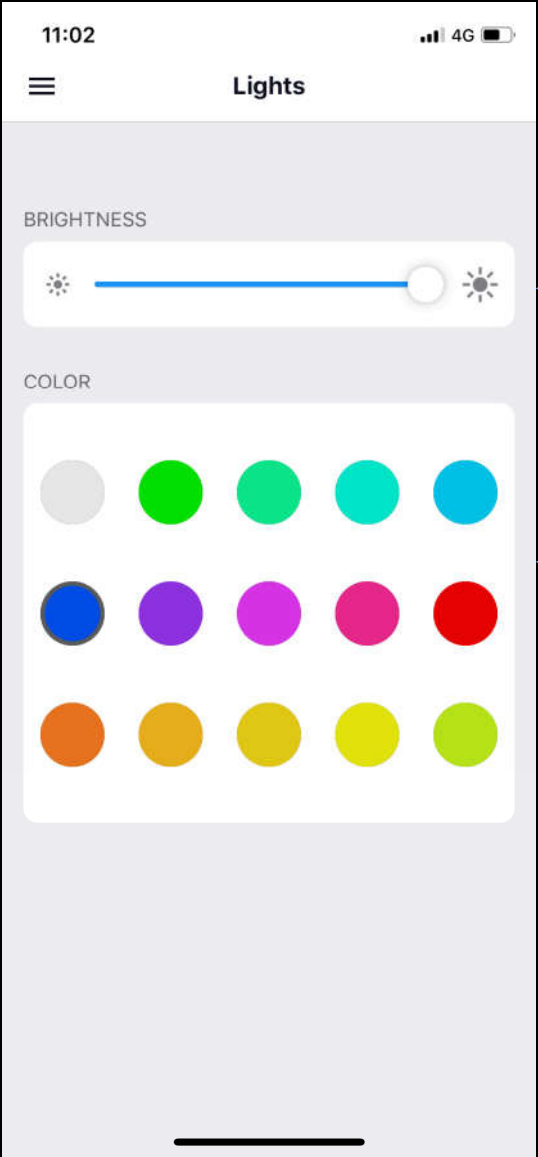
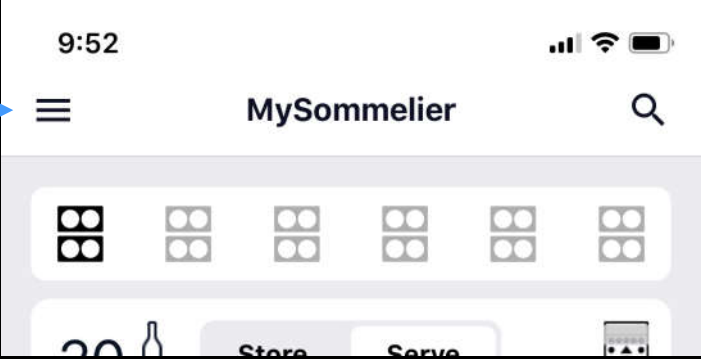


To search one wine tap on magnifying glass and type the name you want on the search bar

Choose your wine from the list below and tap on the light bulb to open the automatic crystal and enlighten the slot

# Lights section

Through this button you can reach the lights section



To manage the brightness of the slot's LED



To choose your favorite color.

**Wait until all MySommelier have changed the color before trying another one**

