



HOISTS FOR EVERY SPACE

TL2.7HP

2.7 Ton Full Platform
Compact Parking Lift

46 Saintly Drive, Truganina VIC 3029
www.tufflift.com.au
Tel: 03 8375 3600



INTRODUCTION

The TL2.7HP is a Tufflift two post parking lift. The platform only moves vertically, so users have to clear the ground level to get the higher level car down. TL2.7HP is suitable for both commercial and residential parking purposes. The lift is also suitable for short time usage situations including for office, hotel, commercial buildings and valet parking.

FEATURES

- » Accomodate most types of vehicles
- » Galvanized and corrugated platform guaranteeing safety and long lifespan
- » Anti slip corrugated deck protect both the vehicle and driver from possible slip and damage
- » Single hydraulic lifting cylinders with chains as driven system
- » The pole with piston is chroming to anti corrode to ensure its long using life
- » Individual hydraulic power pack and control panel for each unit. As an option, one commercial power pump shared by multiple units can shorten the lifting time
- » Self-standing and self-support structure
- » Symmetrical designed column
- » Synchronisation chain assures the lifting platform balance
- » Middle post sharing feature to save cost and space
- » Electrical key switch for security and safety
- » Automatic shut-off if the operator releases the key switch
- » Dynamic mechanical locks and anti-falling device to hold the platform in place
- » Manual lock release available in case of electrical failure
- » Platform can be stopped at different heights to fit various vehicles and ceiling heights





GENERAL PARTS LIST

- 1 Carriage
- 2 Transparent oil tank
(steel oil tank is optional)
- 3 Galvanized waving plate
- 4 Electric box
- 5 Key switch & emergency
stop button
- 6 Dynamic anti-falling lock
- 7 Front footage
- 8 Limit switch
- 9 Power pack
- 10 Photocell sensor

Galvanized pallet

Far more durable. Product lifetime more than doubled

Dynamic locking device

A range of locking tabs at every 100mm on the posts to prevent cars from falling



Gentle metallic touch, excellent surface finishing

After applying AkzoNobel powder, color saturation, weather resistance and its adhesion are significantly enhanced

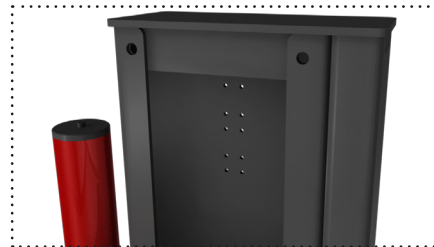


Low usage cost

When the platform moves down, it is driven by gravity, so there is no electricity consumption for the hydraulic power pack

Further strengthened main

When the platform moves down, it is driven by gravity, so there is no electricity consumption for the hydraulic power pack



More stable electric motors

Newly upgraded power pack unit system

TUV Compliant

TUV certification standard - 2006/42/EC and EN14010

All-new designed control system

Easier operation and safer use. Failure rate is reduced by 50%

Further strengthened main structure of the equipment

The thickness of the steel plates and the weld joints have increased by 10% compared to the predecessor

New hydraulic system

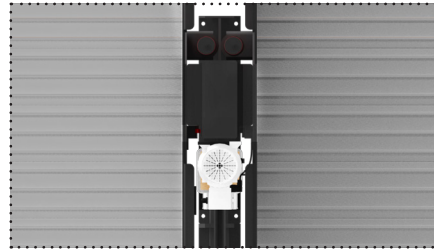
New hydraulic system which owns Ashkenazi structure.

The hydraulic system adopts German top-level product structure design, which is stable and reliable

Avoid the maintenance issues with a product lifespan that is twice as long as the old

Rich colour

Great care is taken with the treatment of lacquer face in order to improve the look and quality of the lift

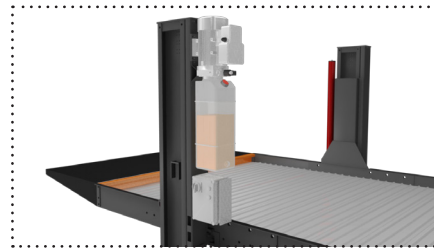


Modular connection, innovative sharing post design

The TL2.7HP two post car parking lift has a sharing post design. Multiple units can be combined together

Strong Adhesion

The weather resistance of the spray powder has greater longevity and can withstand wear and tear



Unique hydraulic centralised control (optional)

Perfect shared power pack unit solution

High quality chains

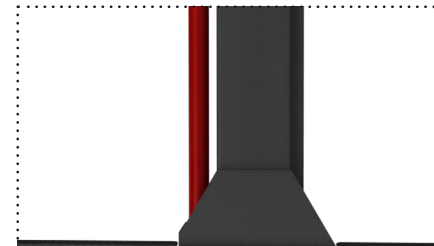
Superior chains provided by Korean chain manufacturer. The life span is 20% longer than that of domestic chains

Galvanized screw bolts based on the European standard

Longer life span with much higher corrosion resistance.

Unique optional single standing suite

Exclusive development of the standing suite for all kinds of terrain. The installation of the equipment is no longer constrained by the ground environment



Laser cutting + robotic welding

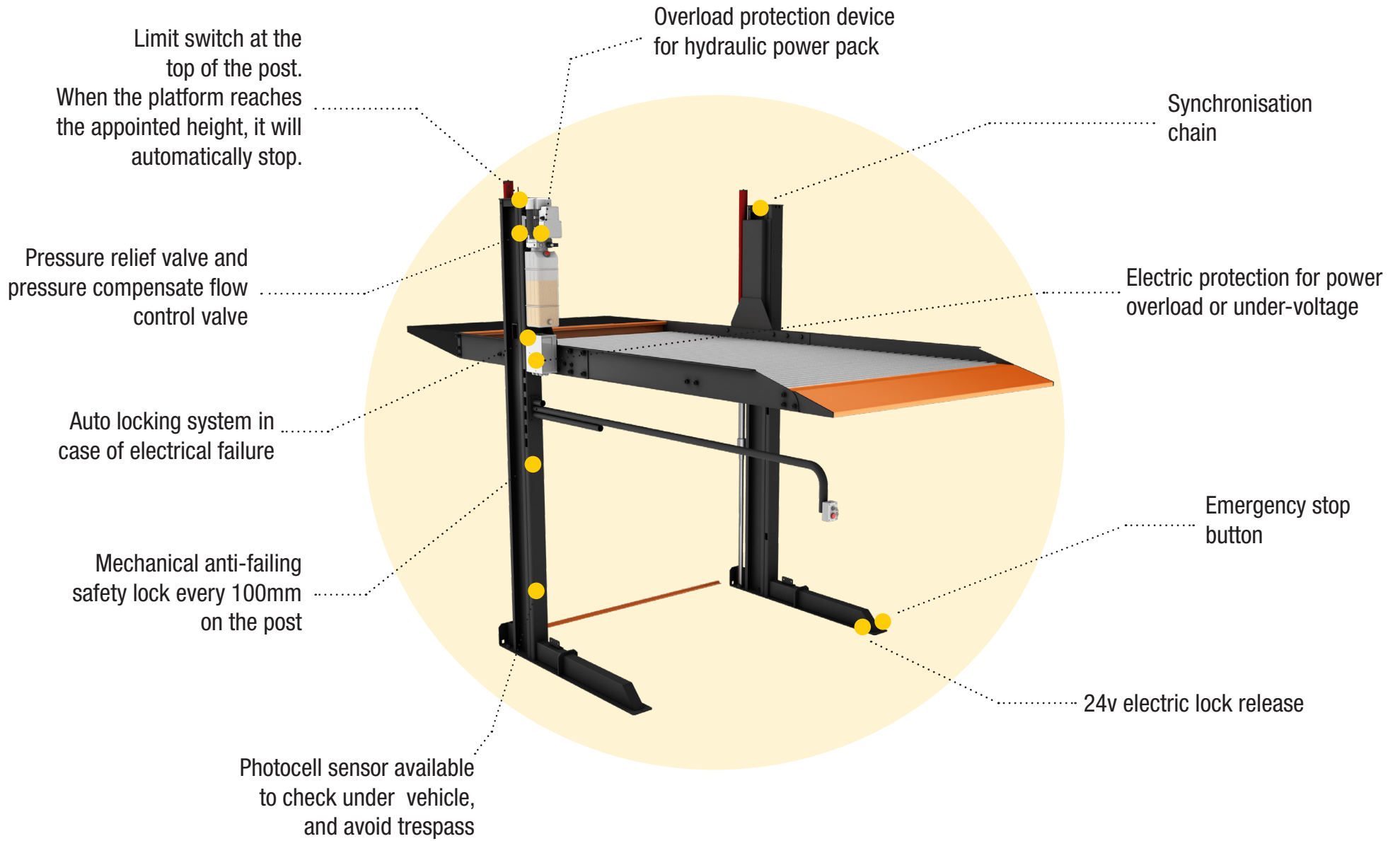
Accurate laser cutting improves the accuracy of the parts, and automated robotic welding makes the weld joints more firm, and gives an overall better finish

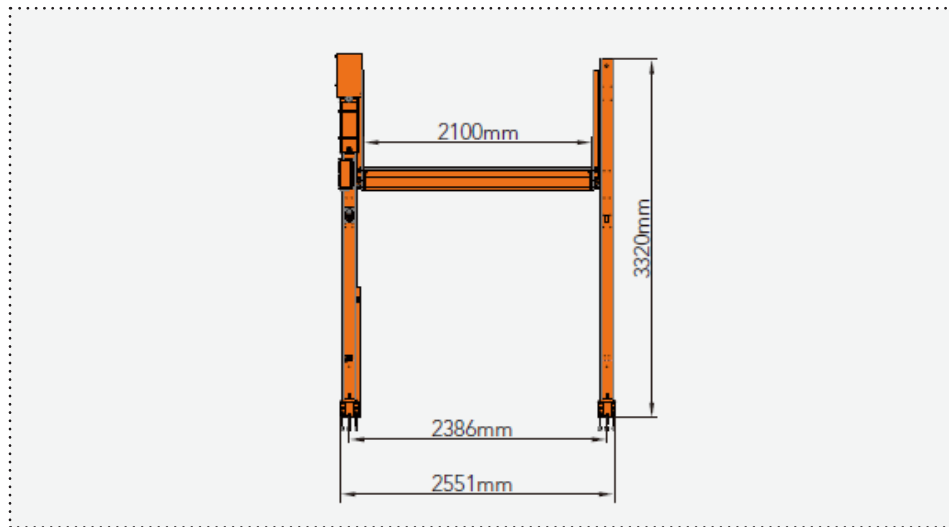
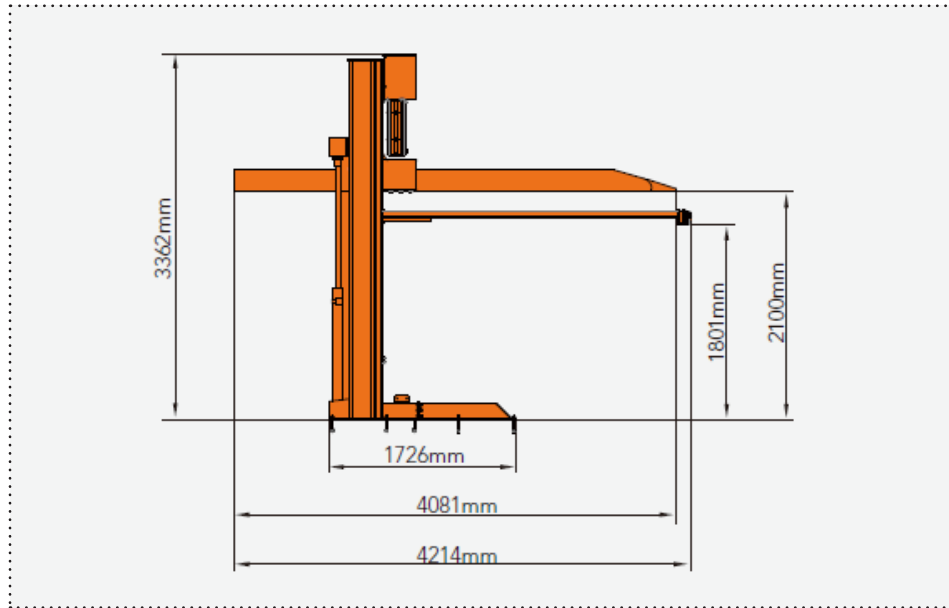
General

Description	Specifications
Vehicles per unit	2
Rated capacity	2700kg
Available car length	5000mm
Available car width	150mm
Available car height	2050mm
Drive mode	Hydraulic cylinder + chains
Operation	Key switch
Lifting speed	<50s
Descending speed	<35s
Power supply	100-480V, 1/3P, 50/60Hz
Finishing	Powder coating with Akzo Nobel powder

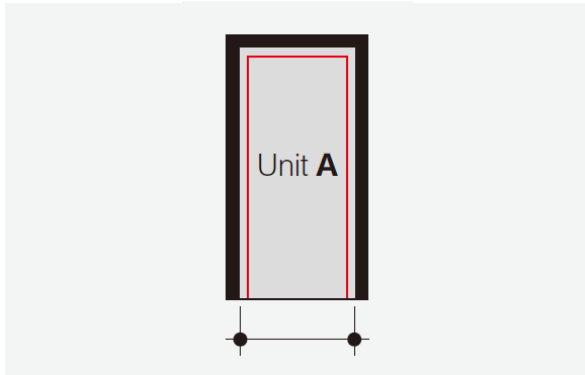
Hydraulic

Description	Specifications
Pump motor power	2.2Kw
Pump flow	2.6ML/r
Pump working pressure	16-17MPa
Hydraulic cylinder	Italian Aston seals
Hydraulic oil	L-HV 46#
Lifting chain	LH1266
Balance chain	LH1066

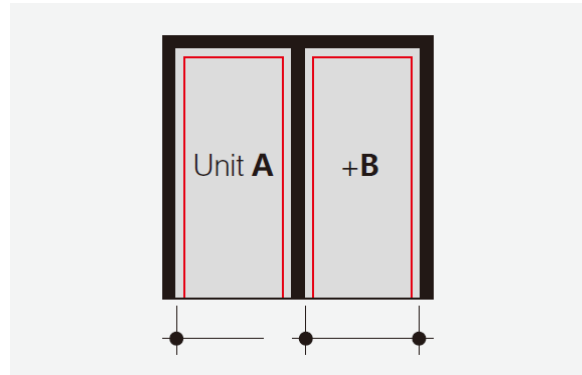




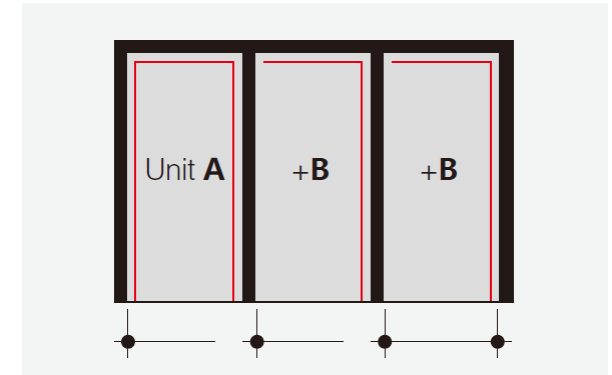
Width Dimensions - Single Unit (2 Cars)



Total Width Required	Clear Platform Width
2551	2100
2651	2200
2751	2300
2851	2400



Total Width Required	Clear Platform Width
4937	2100
5137	2200
5337	2300
5537	2400



Total Width Required	Clear Platform Width
7323	2100
7523	2200
7723	2300
7923	2400

Notes

Clear platform width of 2100 mm for car widths of 1850 mm. For large touring sedans we recommend a clear platform width of at least 2300-2500 mm. According to ISO 3864 the floor has to be marked with 100 mm wide yellow-black at a distance of 500 mm from the platform edge by the purchaser (to be performed according to local regulations.)

The lowering speed of an empty platform is considerably lower than a loaded one. It is not possible to have channels or undercuts and/or concrete haunches along the floor-to-wall joints. In the event that channels or undercuts are necessary, the system width needs to be reduced or the installation width needs to be wider.

The manufacturer reserve the right to construction or model modifications and/or alterations. Furthermore, the right to any subsequent part modification and/or variations and amendments in procedures and standards due to technical and engineering progresses in the art or due to environmental regulation changes, are also hereby reserved.



Surface Finishing

Powder coating is applied as a free-flowing, dry powder.

It is typically applied electrostatically and is then cured under heat to allow it to flow and form a “skin”.

It is usually used to create a hard finish that is tougher than conventional paint.

NOISE PROTECTION

Insulation figure of the construction of min. $R_w = 57$ dB.

Walls which are bordering the parking systems must be done as single wall and deflection resistant with min. $m = 300$ kg/ m²

Solid ceiling above the parking systems with min. $m = 400$ kg/ m²

At differing constructional conditions additional sound absorbing measures are to be provided by the customer. The best results are reached by separated sole plates from the construction.

ELECTRICAL INSTALLATION PREPARATION

Cabling preparation to be performed by the customer:

- Up to the main switch to be in place prior to starting the installation operations
- Connection to the main switch during installation
- System functional check testing can be performed by the electrician provided by the customer

Grounding and potential equalization:

- To be performed by the customer compliant to local regulations
- Connections required every 10 meters

RAILINGS

If walkways are arranged directly to the side or behind the systems, railings have to be provided acc. EN ISO 13857 by client according to local requirements.

Height min. 200cm.

SCOPE OF APPLICATION

Suitable for residential buildings, office buildings, business premises and hotels.

Only for long-term users that have been instructed on how to use the system.

For frequently changing users (e.g. for office, hotel and business premises or similar):

- only parking on ground level
- performance of technical system adjustments as necessary
- consultation with Tufflit is mandatory

TEMPERATURE

The installation is designed to operate between +5° and +40°C.

Atmospheric Humidity: 50% at +40°C. If the local circumstances differ from the above please contact Tufflift.

PROTECTION AGAINST CORROSION

Independent of a maintenance workings has to be carried out according to Tufflift Cleaning and Maintenance Instruction regularly. Clean up galvanized parts and platforms of dirt and road salt as well as other pollution.

FIRE SAFETY

Each and every fire safety requirement and all possible mandatory item(s) and equipment(s) (fire extinguishing systems and fire alarm systems, etc.) are to be provided by the customer.



» Lubricate guide rail and guide pulley once per month



» The seal in hydraulic cylinder should be replaced every two years



» Lubricate balance chain once per month



» The roller and sliding block should be replaced every two years



» Change the hydraulic oil three months after first operation; and change oil every nine months after first changing



» The valve element in solenoid valve and filter in power unit should be cleaned every half year



» Frequently check the screw nuts of bolts, fixing the electromagnet and locking plate. If any screw nut is loosening, ensure that it is fastened



» Before operation, please check the connector of electromagnet. If it is loosening, it needs to be fastened; then do testing on top limit switch and photocell sensor. If it does not work, the issue will need to be fixed, or the part will need to be replaced



» If any noise comes out of from electromagnet, it should be replaced as soon as possible

