

# Limited Size, Unlimited Features



**Dynamic Multi-Beam Imaging**  
Provides excellent images without sacrificing temporal resolution



**Spatial Compound Imaging**  
Optimizes images of different angles



**Widescan for both linear and convex probes**  
Presents a wider view of the image with one click



**Real-Time Panoramic Image**  
Locates lesions or interested areas more easily



**Vis-Needle Technology**  
Shows needle tips for biopsy efficiency improvement



**Continuous Wave Doppler**  
Offers more information for heart function evaluation



**SonoScape**

SonoScape Medical Corp.  
2F, 12<sup>th</sup> Building, Shenzhen Software Park Phase II, Keji Middle  
2<sup>nd</sup> Road, Shenzhen, China  
Tel: +86-755-26722890 Fax: +86-755-26722850  
Email: market@sonoscape.net www.sonoscape.com

**SonoScape**

## E2V

Color Doppler Veterinary  
Diagnostic Ultrasound System



U-E2V20200312

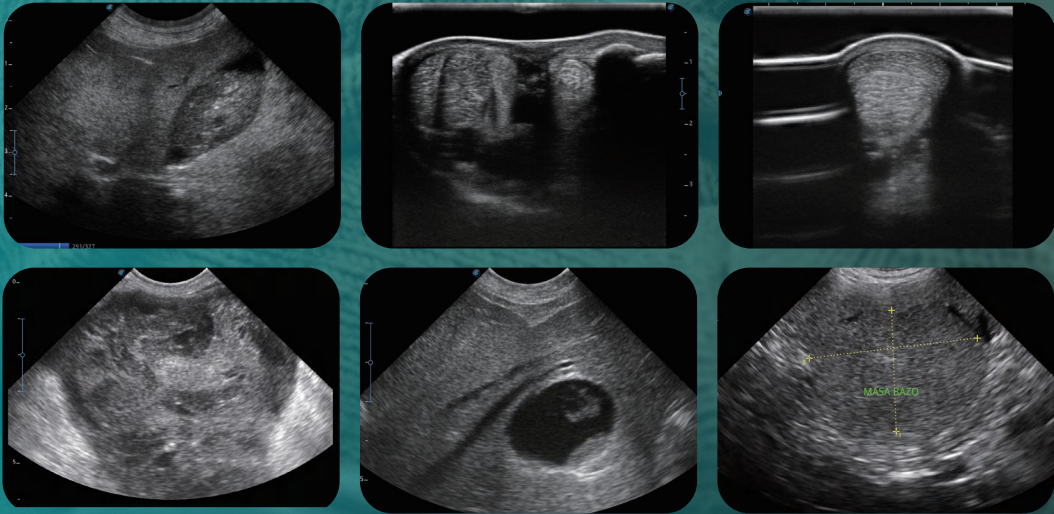




A combination of exceptional image quality and convenient workflow, E2V makes scanning easy for every veterinarian. Thanks to its comprehensive features and technologies, this compact model caters to every type of exam. Specialty presets and exam modes help to provide care for all types of animals, to let you work with confidence under any condition.

More than just extraordinary imaging, E2V with automated functions and comprehensive presets bring satisfying working experience to your daily routine.

- Automated parameter adjustment with one click
- Automatic calculation improves working efficiency significantly
- Considerate patient database management for both owners and pets
- General imaging presets and versatile exam modes cover a full range of veterinary applications
- Post-process and post-management of patient images and information bring confidence for examinations
- Prospective and retrospective storage optimize scanning results for active animals



# Comfort Lies in Design



15.6-inch HD monitor



Inclinable monitor and intuitive panel



Water-proof protective film



Quick boot-up time



Quiet system