



**KMTERRAIN**

# ***KMT-2016***

**Electric Pallet Truck 2t**

---

Designed for heavier loads than the KMT15, the KMT20 offers a 2000kg capacity and a versatile 1.6m lift height. With no forklift ticket required, your team can tackle any job in the yard with confidence.

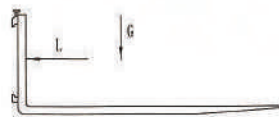
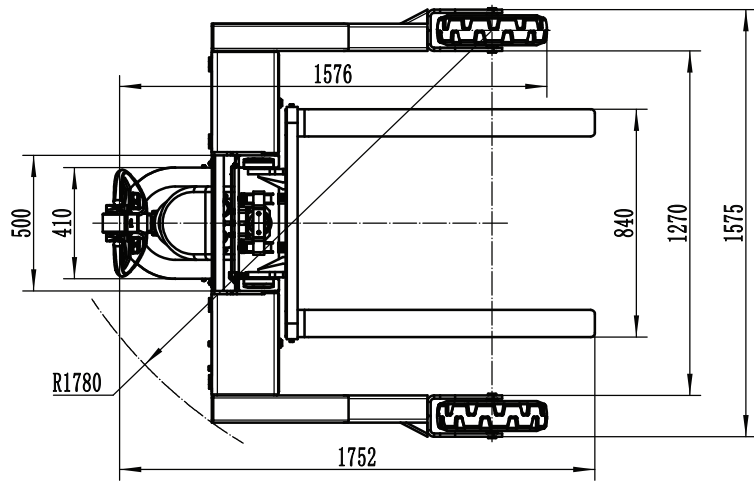
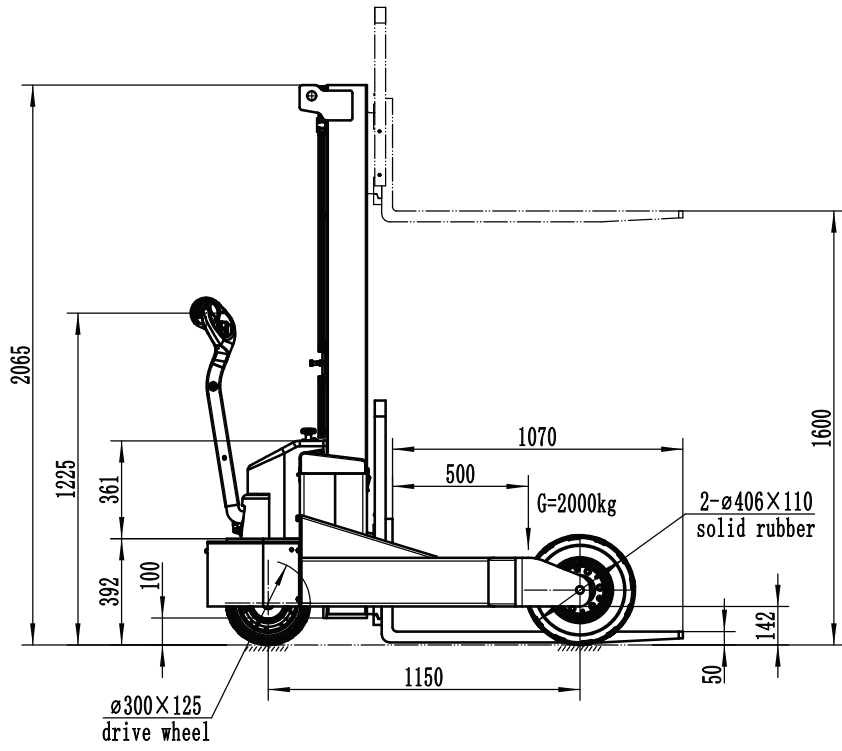
# ■ Specifications

Distinguishing mark			
1.1	Manufacturer		KM Terrain
1.2	Model designation		KMT-2016
1.3	Rated Capacity	Q (kg)	2000
1.4	Load center	c (mm)	500
1.5	Wheel Base	mm	1150
Weights			
2.1	Service weight (including battery):	kg	750
Types,Chassis			
3.1	Tyre Type Drive wheel/ Load Wheels		Rubber/Rubber
3.2	Tyre Size, Drive Wheel (diameter × width)	mm	300x125
3.3	Tyre Size, Load Wheel: (diameter × width)	mm	406x110
Dimensions			
4.1	Lift Height	$h_3$ (mm)	1600
4.2	Height drawbar in driving position Min/Max	$h_{14}$ (mm)	880/1250
4.3	Lowered Height	$h_{13}$ (mm)	50
4.4	Overall Length	$l_3$ (mm)	1752
4.5	Overall width	$b_1 / b_2$ (mm)	1575
4.6	Fork dimensions	s/ e/ l (mm)	40/100/1070
4.7	Fork Carriage Width	(mm)	840
4.8	Outside Width of Forks	(mm)	840
4.9	Distance Between legs	(mm)	1270
4.10	Ground Clearance below mast	m (mm)	100
4.11	Turning Radius	R (mm)	1780
Performance data			
5.1	Travel Speed, Laden/Unladen	km/ h	3.5/7
5.2	Max Gradeability, Laden/Unladen	%	5/10
5.3	Service brake type		Electromagnetic
5.4	Lift Speed with Load	mm	13
Electric-engine			
6.1	Drive Motor Rating	AC	1.5KW
6.2	Lift Motor Rating	DC	24V/2000W
6.3	Maximum Allowed Battery Size	mm	330x210x230
6.4	Battery Voltage/nominal capacity K5	V/Ah	2x12/100
6.5	Battery Weight	kg	70
6.6	Controller	Curtis	1232E-2121
Addition data			
7.1	Type of Drive Unit		AC
7.2	Steering type		Mechanical
7.3	Sound Pressure level at at the drivers ear		74

1. Please note, that colours may vary from pictures.

2. The parameters in the table are of the standard model. For more information, please contact us.

3. The parameters are subject to change without notice.



L: Load Center  
 G: Load Capacity  
 H: Lift H.

