



## PLS F1515

### Key Product Highlights

- Perfect for industries like metal fabrication, signage, automotive, and manufacturing
- Available with 1kW - 6kW power options, allowing you to choose the right configuration based on your cutting requirements.
- Nesting capability.
- Drawer type working table
- Fully enclosed pneumatic door & safety interlock
- Integrated PC with software
- Spacious 1500mm x 1500mm table, can handle large size materials, making it perfect for industrial applications

### Customisation Options

- Full Parametric vision system
- Laser source : up to 6kW



More info



### Maximum Cutting Compatibility\*

Fiber Laser Power (kW)	1kW	2kW	3kW	4kW	6kW
Carbon Steel	12mm	16mm	20mm	22mm	25mm
Stainless Steel	6mm	8mm	10mm	12mm	20mm
Aluminum	4mm	6mm	8mm	10mm	15mm
Brass	3mm	5mm	6mm	8mm	12mm

\*The exact thicknesses may vary based on the specific type of material, laser lens, air configuration, and cutting speed

**Contact us to learn more about our Products and how we can help your business grow**



**EMAIL US**  
sales@prytec.com.au



**CONTACT US**  
03 8372 6444



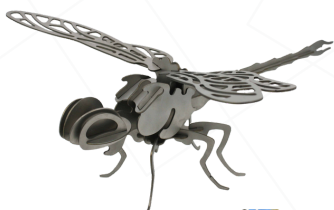
**VISIT OUR WEBSITE**  
www.prytec.com.au



**PLS F1515**

## Technical Specification

Overall Size	L: 2950mm W: 2750mm H: 2040mm
Work Area	1500mm x 1500mm
Laser Source	1kW - 6kW
Table Travels	X Axis - 1500mm Y Axis - 1500mm Z Axis - 120mm
X, Y Max Acceleration	1.5G
Location Precision	+/- 0.05mm
Repeatability	+/- 0.03mm
Rapid Speed	140000mm/min
Weight	4000kg



**Contact us to learn more about our Products and how we can help your business grow**



**EMAIL US**  
sales@prytec.com.au



**CONTACT US**  
03 8372 6444



**VISIT OUR WEBSITE**  
www.prytec.com.au