

Datalogic USA, Inc.
 959 Terry Street
 Eugene, OR 97402
 USA
 Telephone: (541) 683-5700
 Fax: (541) 345-7140

©2015-2020 Datalogic S.p.A. and/or its affiliates

All rights reserved. Without limiting the rights under copyright, no part of this documentation may be reproduced, stored in or introduced into a retrieval system, or transmitted in any form or by any means, or for any purpose, without the express written permission of Datalogic S.p.A. and/or its affiliates.

Owners of Datalogic products are hereby granted a non-exclusive, revocable license to reproduce and transmit this documentation for the purchaser's own internal business purposes. Purchaser shall not remove or alter any proprietary notices, including copyright notices, contained in this documentation and shall ensure that all notices appear on any reproductions of the documentation.

Electronic versions of this document may be downloaded from the Datalogic website (www.datalogic.com). If you visit our website and would like to make comments or suggestions about this or other Datalogic publications, please let us know via the "Contact" page.

Disclaimer

Datalogic has taken reasonable measures to provide information in this manual that is complete and accurate, however, Datalogic shall not be liable for technical or editorial errors or omissions contained herein, nor for incidental or consequential damages resulting from the use of this material. Datalogic reserves the right to change any specification at any time without prior notice.

Trademarks

Datalogic and the Datalogic logo are registered trademarks of Datalogic S.p.A. in many countries, including the U.S.A. and the E.U.

Magellan is a trademark of Datalogic S.p.A. or of Datalogic and/or its affiliates, registered in many countries, including the U.S. and the E.U.

All other trademarks and brands are property of their respective owners.

Patents

See www.patents.datalogic.com for patent list.

Magellan 9300i- and Magellan 9400i-

This product is covered by one or more of the following patents:

Utility patents: CA2492693C, CA2508118C, EP1307854B1, EP1479054B1, EP1481378B1, EP1828957B1, EP1890272B1, EP2287817B1, EP2517148B1, EP2596454B1, US6698658, US6705527, US6783072, US6857567, US6877663, US6917723, US6932273, US7132947, US7170414, US7172123, US7234641, US7374092, US7407096, US7495564, US7527198, US7562817, US7619527, US8006904, US8011579, US8245926, US8358211, US8488210, US8724188, US8915443, US8919651, US9064395, ZL200780018182.3, ZL200980163411.X, ZL201180036226.1

Magellan 9300i+ and Magellan 9400i+

This product is covered by one or more of the following patents:

Utility patents: CA2492693C, CA2508118C, EP1307854B1, EP1479054B1, EP1481378B1, EP1828957B1, EP1890272B1, EP2287817B1, EP2510476B1, EP2517148B1, EP2596454B1, EP2715608B1, US6698658, US6705527, US6783072, US6857567, US6877663, US6917723, US6932273, US7132947, US7170414, US7172123, US7234641, US7374092, US7407096, US7495564, US7527198, US7562817, US7619527, US8006904, US8011579, US8245926, US8358211, US8488210, US8556175, US8561902, US8724188, US8833659, US8915443, US8919651, US9064395, ZL200780018182.3, ZL200980163411.X, ZL201080055422.9, ZL201180036226.1, ZL201280026964.2

WEEE Statement



Waste Electrical and Electronic Equipment (WEEE) Statement

English

For information about the disposal of Waste Electrical and Electronic Equipment (WEEE), please refer to the website at www.datalogic.com.

Italian

Per informazioni sullo smaltimento delle apparecchiature elettriche ed elettroniche consultare il sito Web www.datalogic.com.

French

Pour toute information relative à l'élimination des déchets électroniques (WEEE), veuillez consulter le site internet www.datalogic.com.

German

Informationen zur Entsorgung von Elektro- und Elektronik- Altgeräten (WEEE) erhalten Sie auf der Webseite www.datalogic.com.

Spanish

Si desea información acerca de los procedimientos para el desecho de los residuos del equipo eléctrico y electrónico (WEEE), visite la página Web www.datalogic.com.

Portuguese

Para informações sobre a disposição de Sucatagem de Equipamentos Elétricos e Eletrônicos (WEEE - Waste Electrical and Electronic Equipment), consultar o site web www.datalogic.com.

Chinese

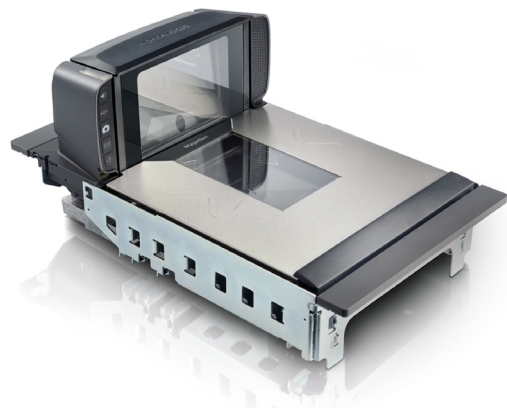
有关处理废弃电气电子设备 (WEEE) 的信息, 请参考 Datalogic 公司的网站 www.datalogic.com。

Japanese

廃電気電子機器 (WEEE) の処理についての関連事項は Datalogic のサイト www.datalogic.com をご参照下さい。

MAGELLAN™ 93-9400i

REGULATORY ADDENDUM

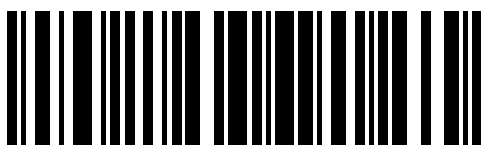


Omni-Directional Imaging Scanner

This document is an addendum to the Quick Reference Guide (QRG) for this product. See the QRG for additional product information.

©2015-2020 Datalogic S.p.A. and/or its affiliates. All rights reserved. Without limiting the rights under copyright, no part of this documentation may be reproduced, stored in or introduced into a retrieval system, or transmitted in any form or by any means, or for any purpose, without the express written permission of Datalogic S.p.A. and/or its affiliates Datalogic and the Datalogic logo are registered trademarks of Datalogic S.p.A. in many countries, including the U.S. and the E.U.

www.datalogic.com



850042901 (Rev G) August 2020

REGULATORY INFORMATION

FCC

This Equipment has been tested and found to comply with the limits for a Class B digital device, pursuant to part 15 of the FCC Rules. These limits are designed to provide reasonable protection against harmful interference in a residential installation. This equipment generates uses and can radiate radio frequency energy and, if not installed and used in accordance with these instructions, may cause harmful interference to radio communications. However, there is no guarantee that interference will not occur in a particular installation. If this equipment does cause harmful interference to radio or television reception, which can be determined by turning the equipment off and on, the user is encouraged to try to correct the interference by one or more of the following measures:

- Reorient or relocate the receiving antenna
- Increase the separation between the equipment and receiver
- Connect the equipment into an outlet on a circuit different from that to which receiver is connected
- Consult the dealer or an experienced radio / TV technician for help.

Canada

Innovation, Science and Economic Development Canada ICES-003 Class B Compliance statement:
 CAN ICES-3(B)/NMB-3(B)

Customs Union

The CU conformity certification has been achieved; this allows the Product to bear the Eurasian mark of conformity.



Power Supply

The scanner requires the use of an external power adapter. Use only Datalogic-approved power supplies. See the Product Reference Guide (PRG) for more information. Alternately, scanners connected via USB can receive Power Off the Terminal (P.O.T.) if it is determined the terminal can supply adequate power to the scanner in this manner.

Características de la fuente de alimentación eléctrica.

Atención Entrada: 100 - 240 Vca @ 600mA 50/60 Hz
 Salida: +12 VDC @ 1500mA. Conector de salida: 39-01-5039 Molex Vivienda o equivalente

1	2	3
Earth(-)	GND	(+)

Utilice en su red solo fuentes certificadas en Argentina.
 El uso de fuentes de alimentación no compatibles puede resultar en riesgo de incendio o de choque eléctrico para el usuario.

BSMI Taiwan RoHS

For the complete table of the Taiwan RoHS Information please visit http://www.datalogic.com/BSMI_TW_RoHS.

有關台灣 RoHS 信息

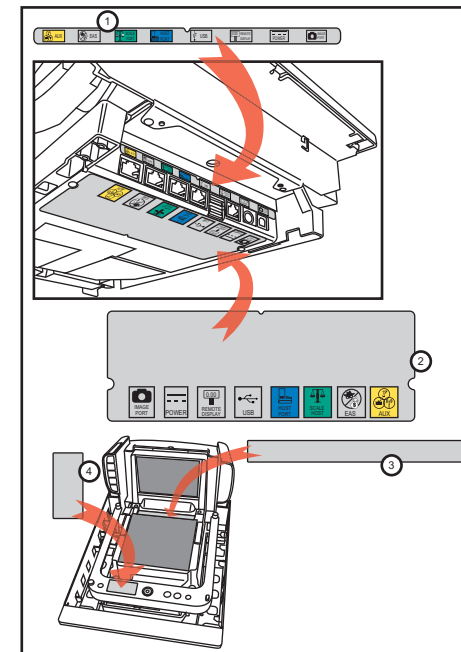
請登入網址 http://www.datalogic.com/BSMI_TW_RoHS 點擊下載。

PRODUCT LABELING

The figure below shows the general shape and position of the labels located on the scanner beneath the platter and on the bottom side of the scanner.



NOTE: Labels are shown to illustrate their location only. Please view the labels on your product for actual details.



Beneath the Platter		Underside of Scanner	
1	Scale Regulatory Label (units with scales only)	3	Regulatory - I/F Label
2	Serial Number Label	4	Connector Bulkhead Label



CAUTION: This product is not user-serviceable. Opening the case of the unit can cause internal damage and will void the warranty.

SAFETY



Please note that the LED lamps used for illumination and scanning have been tested and do not pose any photobiological hazards through normal use. Magellan™ 9300i and 9400i scanners DO NOT contain lasers.

