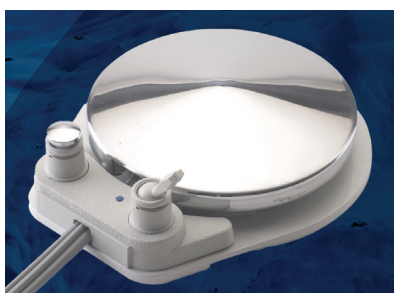




Traditional or Continental

The doctor table is equipped with Luzzani (or DCI) triplex syringe, electric micro motor, 2 high speed fibre optic lines and space for EMS or Satelec scaler.



Foot pedal for Air system



Foot pedal for Electric system



Doctor and Assistant stools



All Swident dental units are available in either Left or Right handed delivery systems.

### Faro Maya LED Light

Faro Maya light provides brilliant illumination and clarity. The arm is balanced to deliver precise light beam orientation. Spotlight 3000 to 35000 Lux. Uniform spotlight area 170 x 85 mm. Shadow dimension 9 x 6mm.

MADE IN ITALY



<b>Patient Chair</b>	<b>Electric</b>	<b>Air System</b>
Continental (swing arm) OR Traditional (hanging hoses) delivery system	•	•
Patient lifting capacity	200 Kg	200 Kg
Double articulated headrest	•	•
Soft seamless ergonomic upholstery available in 23 contemporary colours. Standard colours navy and black.	•	•
Faro LED dental light	Maya	Maya
Left armrest. Optional foldable right armrest	•	•
Removable and autoclavable ceramic cuspidor, rotates 180 ° for easy patient access	•	•
Automatic cup fill and bowl rinse	•	•
Multi-functional foot control provides easy access to chair positions and adjustments, exit position, rinse position and handpiece control.	•	–
Disc type pneumatic foot pedal, controls the speed and torque of handpieces; provides "spray and chip" blower function and on/off water toggle for instruments.	–	•
Emergency safety switch	•	•
Semi dry suction compatability	•	•
Durr place selector valve	•	•
Easily accessible suction filter	•	•
Spittoon drain valve	optional	optional
Clean water bottle system	•	•
Synchronised Trendelenburg position of backrest	•	•
<b>Nurses console</b>		
Assistant console is complete with DCI or Luzzani triplex syringe, Cattani high and low volume suction hoses	•	•
Operation of the cup fill and bowl flush (automatic or manual)	•	•
Operation of the patient chair and handpiece control functions	•	•
<b>Doctors Instrument Console</b>		
Control panel allows 4 individual chair programs	•	•
1 x DCI or Luzzani triplex syringe; 2 x fibre optic high speed lines; 1 x slow speed line; space for scaler	electric micro motor	•
<b>Doctor stool and Assistant stool with foot rest</b>	optional	optional
<b>Warranty</b>		
4 Years on parts (excluding globes, handpiece tubing, hoses and suction valves); 1 Year on labour (labour at customers' premises only. Excludes travel expenses)	•	•

**Optional** - Add the following to the above price: **EMS Scaler** \$1600+gst

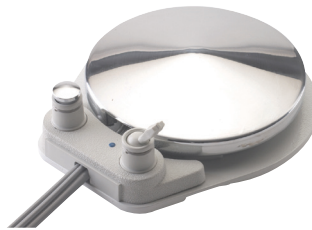
**Doctor & Assistant stools** rrp \$1980+gst. Package price only. \$950+gst Assistant stool. Doctor stool Free.

**Spittoon drain valve** \$1250+gst; **Upholstery colour** \$500+gst (Navy or Black - no extra cost)



### Traditional or Continental

The doctor table is equipped with Luzzani (or DCI) triplex syringe, high speed fibre optic line, low speed line and choice of EMS or Satelec scaler.



### Pneumatic Foot Control

The pneumatic foot control is programmed to control the handpiece functions, including progressive regulation of the air motor, spray and chip blower.



### Faro Maya LED Light

Faro Maya light provides brilliant illumination and clarity. The arm is balanced to deliver precise light beam orientation. Spotlight 3000 to 35000 Lux. Spotlight area 170 x 85 mm. Shadow dimension 9 x 6mm.



All Swident dental units are available in either Left or Right handed delivery systems.

Doctor and Assistant stools

MADE IN ITALY





**ampac**dental

DENTAL EQUIPMENT SPECIALISTS



<b>Patient Chair</b>	
Continental (Swing arm) OR Hanging Hoses Delivery system	•
Patient Lifting Capacity	200 Kg
Double articulated headrest	•
Soft seamless ergonomic upholstery, available in 23 contemporary colours. Standard colours Navy and Black	•
Faro LED Dental Light	Maya
Left armrest	•
Removable and autoclavable ceramic cuspidor for easy cleaning. Cuspidor rotates 180 ° for easy patient access	•
Automatic cup fill and bowl rinse	•
Disc type pneumatic foot pedal, controls the speed and torque of handpieces; provides "spray and chip" blower function and on/off water toggle for instruments	•
Emergency safety switch	•
Semi dry suction compatability	•
Durr place selector valve	•
Easily accessible suction filter	•
Spittoon drain valve	optional
Clean water bottle system	optional
<b>Nurses console</b>	
Assistant console is complete with DCI or Luzzani Triplex syringe, Cattani High and Low volume suction hoses	•
<b>Doctors Instrument Console</b>	
Control panel allows 4 individual chair programs	•
1 x DCI or Luzzani Triplex Syringe; 1 x Fibre Optic High Speed Tubing; 1 x low speed air motor line; 1 x space for scaler	•
<b>Doctor stool and Assistant stool with foot rest</b>	optional
<b>Warranty</b>	
4 Years on parts (excluding globes, handpiece tubing, hoses and suction valves); 1 Year on labour (labour at customers' premises only. Excludes travel expenses)	•

**Optional** - Add the following to the above price: **EMS Scaler** \$1600+gst

**Doctor & Assistant stools** rrp \$1980+gst. Package price only. \$950+gst Assistant stool. Doctor stool Free.

**Spittoon drain valve** \$1250+gst; **Upholstery colour** \$500+gst (Navy or Black - no extra cost)



**ampac dental**

DENTAL EQUIPMENT SPECIALISTS



**FRIEND EASY PARTNER PARTNER**

<b>Patient Chair</b>	Air System	Electric	Air System
Continental (Swing arm) OR Hanging Hoses Delivery system	•	•	•
Patient Lifting Capacity	200 Kg	200 Kg	200 Kg
Double articulated headrest	•	•	•
Soft seamless ergonomic upholstery, available in 23 colours. Standard colours are Navy and Black	•	Memory Foam	Memory Foam
Faro LED Dental Light	Maya	Maya	Maya
Left armrest and Optional foldable right armrest	Left armrest only	Left armrest only	Left armrest only
Removable and autoclavable ceramic cuspidor for easy cleaning. Cuspidor rotates 180° for easy patient access	•	•	•
Automatic cup fill and bowl rinse	•	•	•
Multi-functional foot control for easy access to chair positions, chair adjustments, exit position, rinse position and handpiece control	–	•	–
Disc type pneumatic foot pedal, controls the speed and torque of handpieces; provides "spray and chip" blower function and on/off water toggle for instruments.	•	–	•
Emergency safety switch	•	•	•
Semi dry suction compatibility	•	•	•
Durr place selector valve	•	•	•
Easily accessible suction filter	•	•	•
Spittoon drain valve	optional	optional	optional
Clean water bottle system	optional	•	•
Synchronised Trendelenburg position of backrest	–	•	•
<b>Nurses console</b>			
Assistant console complete with DCI or Luzzani Triplex syringe, Cattani High and Low volume suction hoses	•	•	•
Operation of the cup fill and bowl flush (automatic or manual)	–	•	•
Operation of the patient chair and instrument functions	–	•	•
<b>Doctors Instrument Console</b>			
Control panel allows 4 individual chair programs	•	•	•
Instrument positions	1 DCI or Luzzani triplex 1 FO high speed line 1 slow speed line space for scaler	1 DCI or Luzzani triplex 2 FO high speed lines 1 electric micro motor space for scaler	1 DCI or Luzzani triplex 2 FO high speed lines 1 slow speed line space for scaler
<b>Doctor and assistant stool (with foot rest)</b>	optional	optional	optional
<b>Warranty</b>			
4 Years on parts (excluding globes, handpiece tubing, hoses and suction valves); 1 Year on labour (labour at customers' premises only. Excludes travel expenses)	•	•	•

**Optional - Doctor & Assistant stools** rrp \$1980+gst. Package price only. \$950+gst Assistant stool. Doctor stool Free.

**EMS Scaler** \$1600+gst; **Spittoon drain valve** \$1250+gst; **Upholstery colour** \$500+gst (Navy or Black - no extra cost)

Free Call 1800 061 343 • info@ampac-dental.com.au • ampacdental.com.au;