

monitor

the world's
best equipment
supported
locally

Sales | Service | Parts | Hire | Finance

Monitor RR19/500 Rail Boom Lift

1800 025 024
monitor.net.au

@MonitorAUS



V1.0 - 240805



MONITOR RR19/500

The Monitor RR19/500 is designed to take you above and beyond construction on issues for rail—with a greater reach and load capacity. It also comes equipped with better features to ensure safety, and work efficiency.

This telescopic rail boom lift, developed by Platform Basket, is the bigger version of the famous RR14.

The Monitor RR19/500 is extremely rigid, and safe to accommodate 3 persons with a maximum weight capacity of 500kg.

Weighing just 19.5 t, the Monitor RR19/500 has a vertical outreach of up to 19m, and horizontal outreach of 14m.

With its self-levelling turret feature, working on tracks with a cant up to 200mm is now possible whilst ensuring the work platform is level at all times.


Powered by a 55 kW engine, or fully electric operation with lithium-ion batteries in order to make the equipment suitable for use in tunnels, subways and indoors.

19M
WORKING HEIGHT



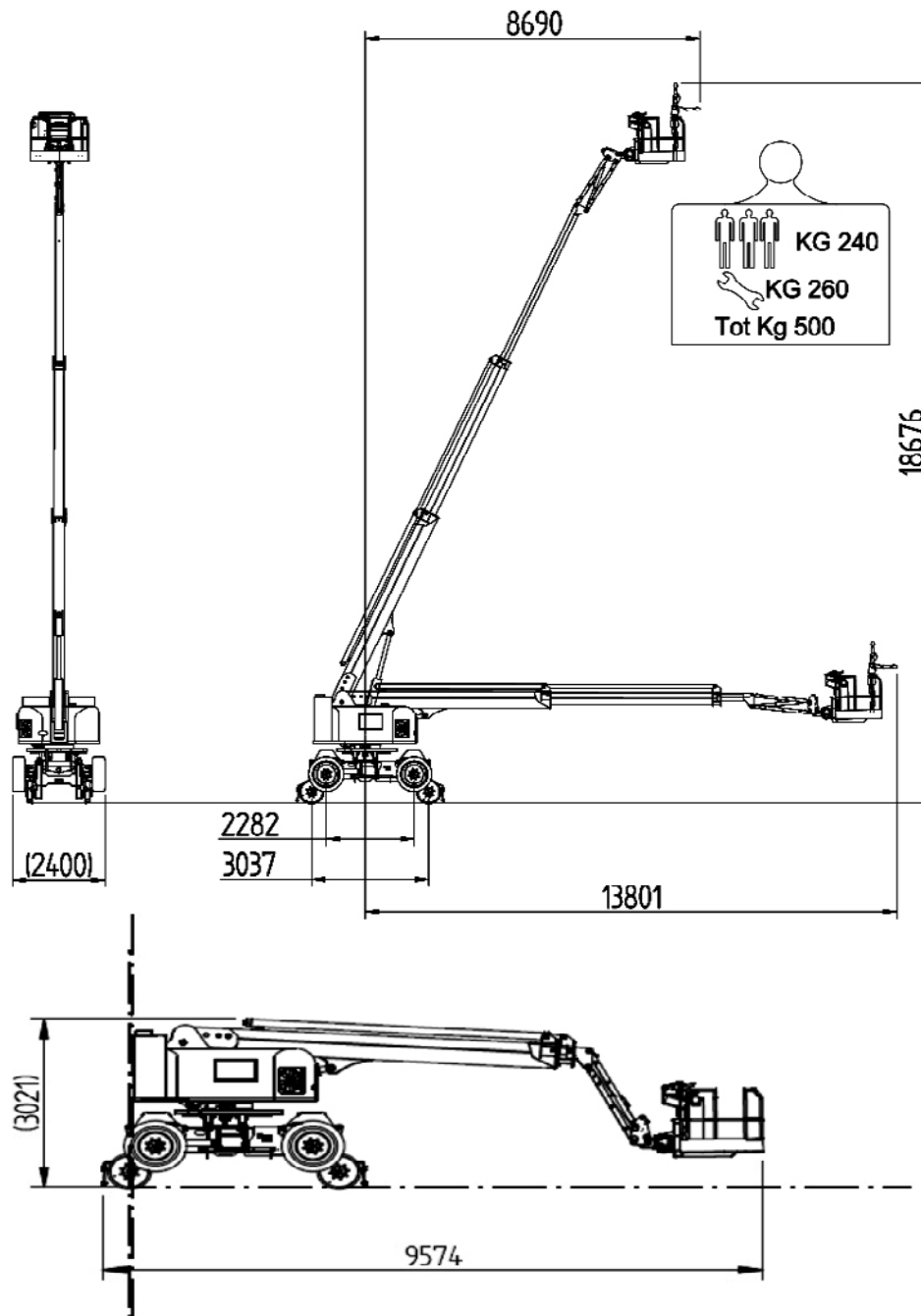
OPTIONAL ADD-ONS:

 Lithium Battery

 Measurement Pantograph



Technical Specifications



Max working height	19 m
Max working height in narrow set	17 m
Max horizontal outreach	14 m
Max rated capacity	3 persons / 500 kg
Weight (approx.)	19,500 kg
Turret rotation	360°
Basket rotation	deg 90° + 90°
Ground pressure driving (approx)	kN/m ²
Traffic load (live load) travelling	kN/m ²
Auto levelling turret	Std
Gradeability lengthwise	
Gradeability sideways	
Standard engine	Hatz 48 hp Diesel
Optional power source	Emergency Hatz 9 hp Diesel
Dual power options	Hybrid with Lithium Batteries
Tri-guage	Optional
Drive Speed	Rail 14 km/hr (Road 5 km/hr)
Electric emergency lowering	Std

(All specs E&OE and subject to change)

Note: Specifications vary between models as well as with rail gauge changes. For more detailed information on the RR19, please contact Monitor.



Optional Accessories

Lithium Battery

With a more efficient technology that is environment friendly with the reduction of noise and emissions and increased safety.

It boasts a fully electric solution that enables it to be used in any situation with low noise, and no emissions.



Measurement Pantograph

Designed to fit to the RR14 EVO3, it is very compact in size to maximize the machine's manoeuvrability, retracting to a stowed height position of only 3m.

This enables the machine to be transported on trucks without having to remove the pantograph.







zero
downtime
guarantee*



Our Locations

Branches & Service Centres



Tamworth

143 Gunnedah Rd
Tamworth NSW 2340



Sydney

49-50 Cassola Pl
Penrith NSW 2740



Melbourne

24-28 William Rd
Dandenong South VIC 3175



Brisbane

191 Magnesium Dr
Crestmead QLD 4132



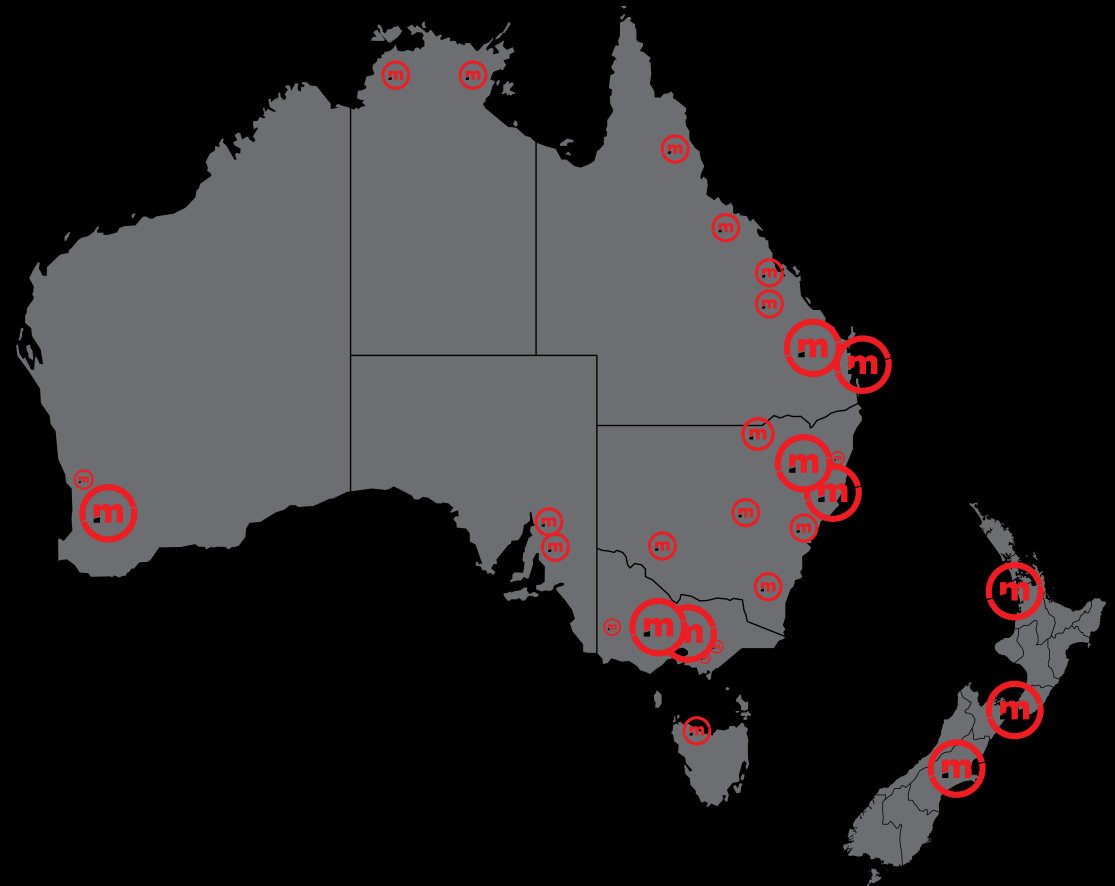
Brisbane - Caboolture

2 Alta Drive
Caboolture QLD 4510



Perth

11 Reihill Rd
Maddington WA 6109



agent@monitor.net.au

1800 025 024
monitor.net.au

@MonitorAUS



monitor

the world's best equipment supported locally

Monitor RR19/500 Rail Boom Lift