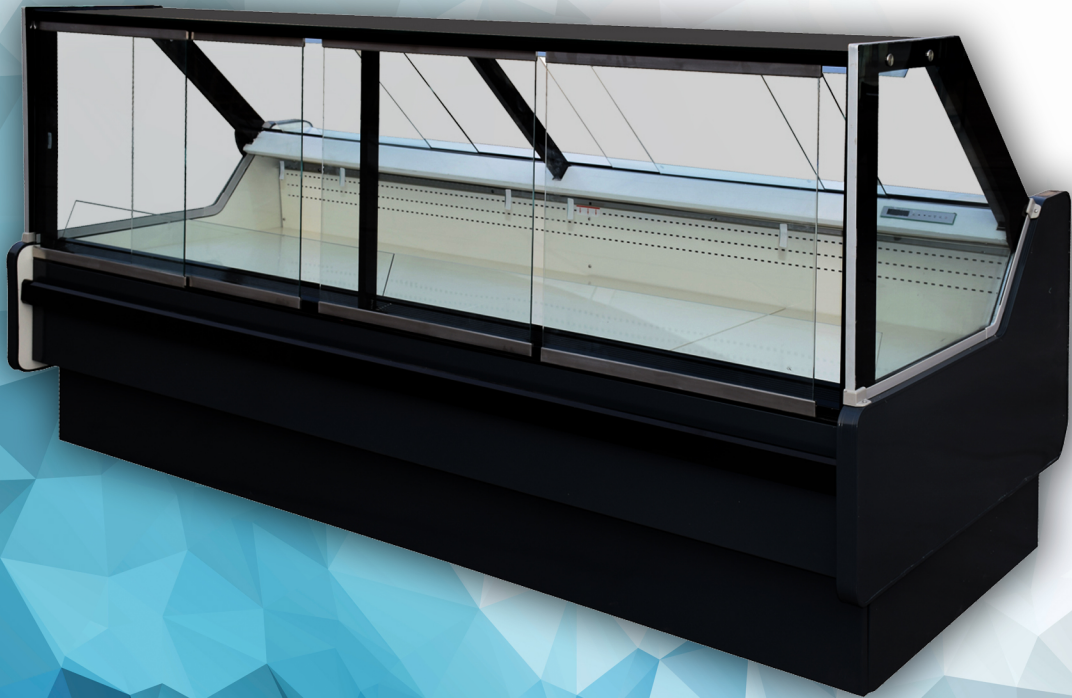


17 PHEA Counters

A CHALLENGER IN GLOBAL COMPETITION



TECHNICAL DATA SHEET



Type Code

PHEA 187 R P

Name of product

Cabinet length: 1 875 mm

Top glass: R-top straight glass door T-top open

Cooling system: P = PLUG-IN

Standard features

- Remote and plug-in models both available
- Inner top LED light
- Lift-up front straight glass door
- Dixell digital thermostat
- Danfoss expansion valve (R404a, R448A, R449A)
- Rounded inside / outside corner
- Glass endpanel
- Custom color

Accessories

- DC inverter compressor
- Stainless steel 304 interior
- EC fan motor
- Electronic expansion valve
- Mirror / Solid endpanel
- R290 gas (plug-in models only)

PHEA		Models	125	187	250	375	COR
R (P)	Length incl. endpanels (40 mm each)	[mm]	1 330	1 955	2 580	3 830	1 450
	Temperature range	[°C]			-3 / +3		
	Display volume / Height 1 200 mm	[L]	220	330	440	670	330
T (P)	Length incl. endpanels (40 mm each)	[mm]	1 330	1 955	2 580	3 830	1 450
	Temperature range	[°C]			-3 / +3		
	Display volume / Height 880 mm	[L]	220	330	440	670	330

SECTIONAL VIEWS

