

ELECTRIC STAIR CLIMBER

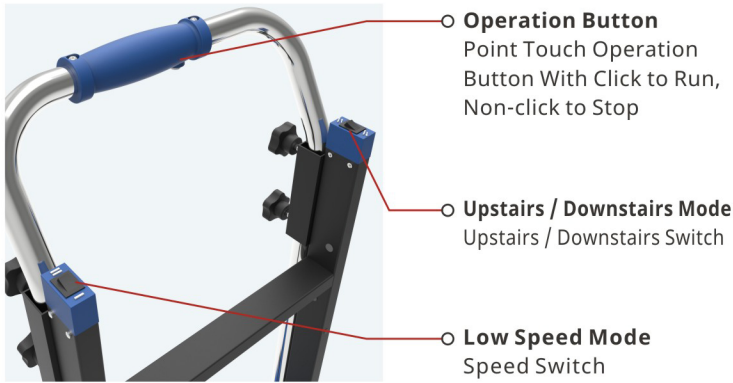
ZW4170D/ZW4200D



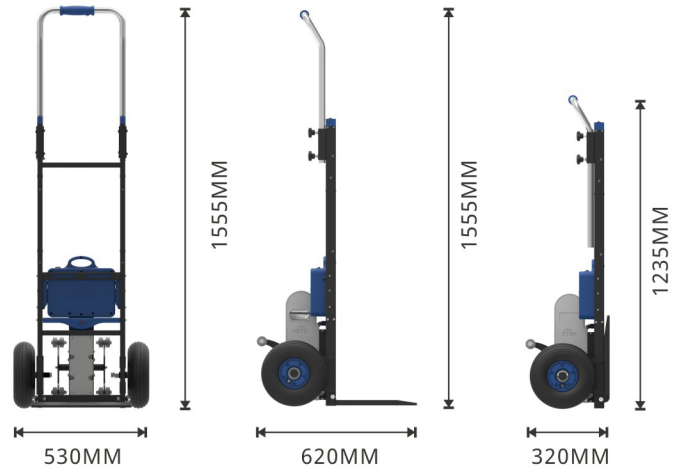
ELECTRIC STAIR CLIMBER



ZW4170D/ZW4200D



TECHNICAL DATA		
Model	ZW4170D	ZW4200D
Item Weight	24.5KG	28.5KG
Maximum Capacity	170KG	200KG
Battery Capacity	950-1950 Steps	950-1850 Steps
Low Speed	24 Steps/Min	24 Steps/Min
High Speed	34 Steps/Min	34 Steps/Min
Material	Carbon Steel	Carbon Steel
Noise	<70dB	<70dB
Protection Grade	Ip54	Ip54
Step Requirement	Height<21CM Width>25CM	Height<21CM Width>25CM



ELECTRIC STAIR CLIMBER

ACCESSORIES



Lithium Battery

Battery Capacity: 48V 10AH

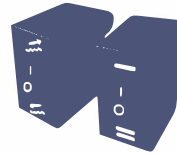
Battery Weight: 3.1KG



Charger

Input: 100V-240V

Output: 54.6V 4A



Spare Button

Upstairs / Downstairs Switch Button

High / Low Speed Switch Button



Strap

Size: 55x3700MM

Adjustable Strap Buckle

OPTIONAL FIXTURE



Retractable 4th Wheel Attachment

Moving On the Flat Surface Easily



Gas Cylinder Fixture

Upstairs / Downstairs Easily And Safely



Water Delivery Fixture

Carry 6 Barrels Water In a Time



Extended Body Fixture

With More Loading Space



Extended Guardrail Fixture

Carry 8 Cartons of Beer In a Time

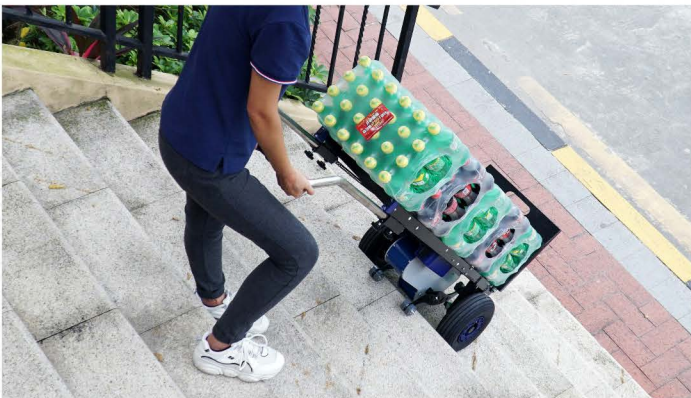


4 Wheel Dolly

Maneuvering In Stairs Corner And Turn Around In 360°

ELECTRIC STAIR CLIMBER

APPLICATIONS



Faster, Safer and Easier Deliveries On Stairs For Heavy Cargo

WIDELY USED TO CARRY:

- Home Appliance
- Furniture
- Beverage
- Gas Cylinder
- Ceramic Tile
- Boxes

Ease Your Way To Every Stair!

