



LIFTMASTER

Rugged Manual Bin Lifter

Operating Manual

Rugged—Powered Bin Lifter Operating Manual—OM0010E/2

This manual contains important safety, installation and operating instructions for this unit. Read this manual thoroughly and completely, and retain for future reference. This unit can cause serious injury to personnel or damage to property if used incorrectly, therefore do not use this machine for any other purpose apart from its intended use. Using this unit incorrectly may void warranty.

Any damage audible or visible to this unit should be addressed at the time of discovery. Electrodrive Pty Ltd can provide parts and service support on request through its service partner company:

Serviced Equipment Pty Ltd

p: 1300 934 471

e: service@fallshaw.com.au

Made in Australia by:

Electrodrive Pty Ltd

2A Ayton Street, Sunshine North VIC Australia 3020

p: 1300 934 471 (within Australia)

p: +61 (03) 9300 8521 (International)

e: sales@electrodrive.com.au

w: www.electrodrive.com.au

© Electrodrive

Contents

Introduction.....	4
Operating instructions	5
Safety check	5
Moving the Bin Lifter to the operating position	5
Placing a wheelie bin into the unit	5
Lifting and lowering the bin cradle.....	6
Maintenance	7
Warranty	8
Unauthorised maintenance.....	8
Misuse	8
General wear items not covered under warranty.....	8
Spare parts list.....	9
Service log	10

Introduction

The Liftmaster Rugged Powered Bin Lifter is an hydraulic hand-pump powered bin lifter rated to lift 120 and 240 litre wheelie bins weighing up to 100 kg.



Model	Working Load Limit	Max Load
BLHP1500/1500LL/1800	96 kg	100 kg

Operating instructions

Safety check

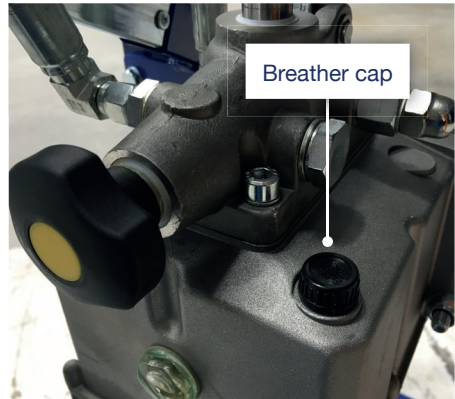
Before using this Bin Lifter, the operator should complete the following check:

- Ensure the unit has not been damaged in transit.
- Look for damage to the pallet and cuts or tears in the plastic wrapping.



This bin lifter is shipped with a travel cap on the oil reservoir located on the pump. This needs to be swapped with the included breather cap before operating the unit.

To swap the caps, unscrew the travel cap from the oil reservoir and replace with the breather cap. Always replace the travel cap if you are shipping the unit.



Moving the Bin Lifter to the operating position



1. Wheel the Bin Lifter to the skip bin.
2. Position the Bin Lifter against the skip bin and press down on the two red castor pedals to activate the total brakes.
3. Lift the two skip bin hooks up and over the lip of the bulk bin and fasten securely.

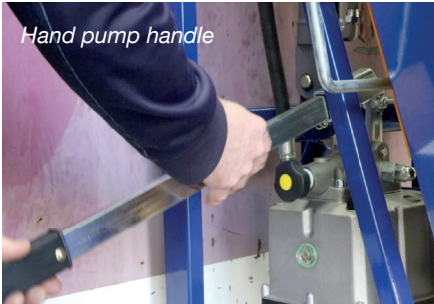
Placing a wheelie bin into the unit

1. Adjust the sliding wheelie bin retainer to suit a 240 litre wheelie bin (higher lip) or a 120 litre wheelie bin (lower lip).
2. Move a wheelie bin to the cradle and locate it over the base cradle hook.
3. Push the wheelie bin forward to lock into the wheelie bin hooks.

The Bin Lifter is now ready to lift the wheelie bin and empty its contents.



Lifting and lowering the bin cradle



1. Check area is clear and no obstructions exist around the unit.
2. Insert the handle into the pump and jack the bin cradle up until it reaches its tipping point.
3. Once the wheelie bin is empty, turn the release valve counter-clockwise to slowly lower the bin cradle.
4. When the bin cradle reaches its rest position, place one hand on the locking arm lever and one hand on the wheelie bin.
5. Rotate the locking arm lever down and the wheelie bin will release.



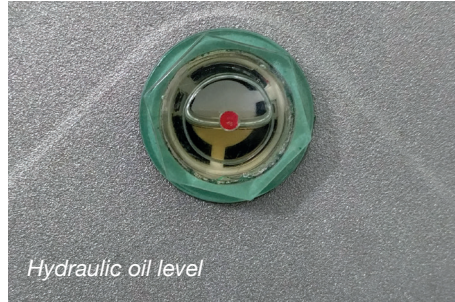
Operating this unit safely.

The swing arm is painted bright yellow to be visible. Keep a 2 metre exclusion zone while operating this unit.

In the unlikely event of a hydraulic failure, a burst hose protection valve will keep the swing arm in the same place until a technician releases it and repairs the hose.

Maintenance

- Do not leave this bin lifter out in the weather unnecessarily. Always store this unit under cover.
- Check the hydraulic oil level weekly, ensuring that the level in the indicator window is at the red dot. Replace oil with *Renolin B Plus 32*.
- Do not leave the bin cradle in the 'UP' position when not in use.
- Grease moving parts annually.
- Only clean this unit with soap and water.



Warranty

Electrodrive Pty Ltd warrants that this product is free from defects in materials and workmanship for a period of twelve months from the date of dispatch from the Electrodrive plant.

If a defect is reported, Electrodrive will repair or replace the defective part, at its own discretion. This warranty does not apply if this unit has been misused, damaged, or modified in any way.

Please be aware that modifications and misuse will void your warranty. The following activities (including, but not limited to) are examples of these:

Unauthorised maintenance

- There are modifications to the body or frame of the machine
- Use of non-specified parts
- The machine is serviced by an unauthorized service agent

Misuse

- Overloading the unit during lifting
- Carrying people or other foreign objects
- Exposed to rain or other precipitation, unless weatherproof option is installed
- Exposed to a corrosive environment

General wear items not covered under warranty

- Tyres, tubes and castors

Spare parts list

Part	Description
MSQ125/MZHTB	Total brake castor
HYDRAULIC HOSE	Hydraulic hose—special order
SPBL1500SHUTE	Bin cradle chute—1500 mm
SPBL1800SHUTE	Bin cradle chute—1800 mm
SPLMBINCTCHASS	Locking arm lever assembly
LM12STARLW	
SPLMBLSPRING	
SPLMBLBLKBINRODASS	Rod assembly
SPLM16STARLW	
SPLMBLBINCATCH	Skip bin hook
SPLM16STARLW	
SPLMBLCYLINDER	Hydraulic cylinder
SPBINRETAINARM	Sliding wheelie bin retainer
SPLMM8HNDKNB	Sliding wheelie bin retainer knob
SPLMBLHNDPUMP	Hand-pump
SPLMBLHPHAND	Hand-pump handle

Service log

Service recommendations

To ensure this equipment is kept in a safe and reliable condition, it is important to follow a preventative maintenance program. Maintain a log of the service work on the cards below, and always use an approved Electrodrive service agent to conduct the works. Approved service personnel will be provided with all necessary documents and components in service repair, including but not limited to, circuit diagrams, component part lists, descriptions, service checklists and spare parts.

6 month service

Date of service		Service agent	
Machine serial number			
Summary of works			
Next service due			

12 month service

Date of service		Service agent	
Machine serial number			
Summary of works			
Next service due			

18 month service

Date of service		Service agent	
Machine serial number			
Summary of works			
Next service due			

24 month service

Date of service		Service agent	
Machine serial number			
Summary of works			
Next service due			

30 month service

Date of service		Service agent	
Machine serial number			
Summary of works			
Next service due			

36 month service

Date of service		Service agent	
Machine serial number			
Summary of works			
Next service due			

42 month service

Date of service		Service agent	
Machine serial number			
Summary of works			
Next service due			

48 month service

Date of service		Service agent	
Machine serial number			
Summary of works			
Next service due			

54 month service

Date of service		Service agent	
Machine serial number			
Summary of works			
Next service due			

60 month service

Date of service		Service agent	
Machine serial number			
Summary of works			
Next service due			

Mobility solutions to help you push, pull and lift with ease.

www.electrodrive.com.au