



**ENERPAT**

Global Waste Disposal System Supplier

# About ENERPAT



**100+**

Authorized  
Distributors



**278**

Strategic Partners of Fortune  
Global 500 Enterprises



Since **1936**

Over 80 Years of Technical and  
Operational Experience



**25.8** Billion

Sales Revenue  
in 2022



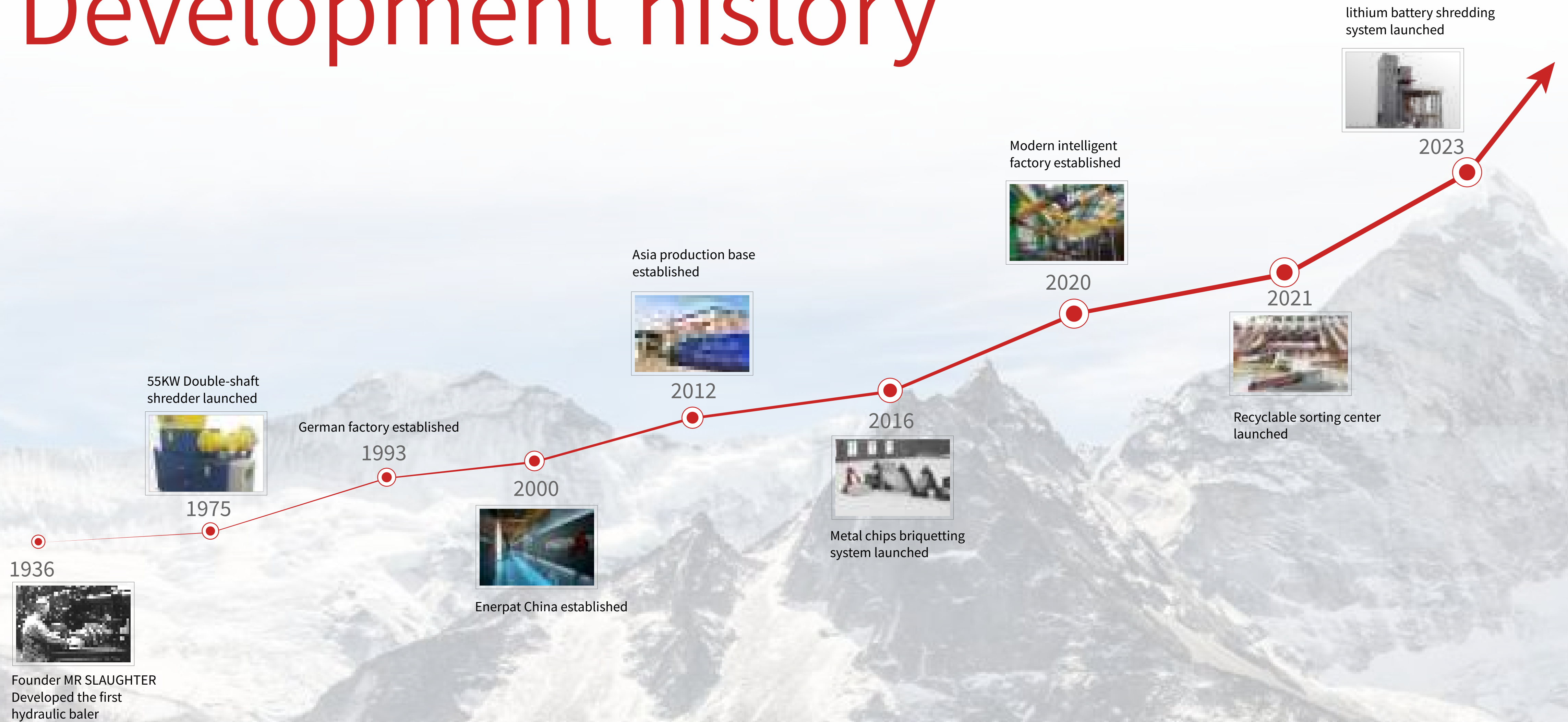
ENERPAT, established in Manchester, UK in 1936, is a global provider for Environment, Energy and Equipment. Up to now, the group has been: operated in 165 countries and served 278 Fortune Global 500 enterprises.

For over 80 years, with its innovative and advanced research and development system and perfect quality concept, ENERPAT has provided continuous and reliable solid waste solution guarantees to millions of enterprise users worldwide who pursue professional and efficient services. Meanwhile, it has become a trusted solid waste solution partner for hundreds of millions of environmentalists who love the environment and pursue quality around the world.



**ENERPAT - UK Brand UK Technology**

# Development history



# Global layout



Headquarter UK

Branch  
Australia, United States, China



**165**

Providing products  
and services to 165  
countries and regions



**650+**

650 Technical experts  
in hydraulic, electrical,  
mechanical and other  
industries



**500+**

500 Marketing and  
service persons



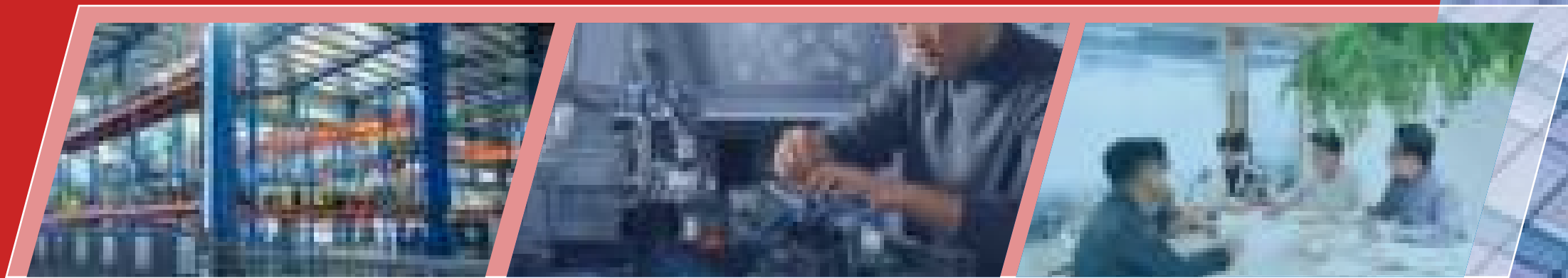
Global production base

UK, China, Germany  
Three major modern bases





# ENERPAT China



Asia Production Base  
Nantong

R&D Center  
Changzhou and Suzhou

Sales Center Changzhou  
and Suzhou

ENERPAT China is a technology and environmental friendly enterprise specializing in solid waste treatment, with a production base located in Nantong, China. Relying on the core technology and mature experience of ENERPAT's UK headquarters for nearly a hundred years, it has gathered global scientific research achievements, collected Chinese manufacturing forces, and created a new full chain technology model of research-production-sales service, and thus dedicated to achieving the mission of "using technology to create a better environment".

Since its establishment, with its precise market positioning and unique strategic concept, ENERPAT has devoted itself to the global field of solid waste treatment equipment, deeply laying out innovative models for global research and development, and providing a complete set of "solid waste resource utilization" solutions for various industries such as domestic and foreign metal processing and manufacturing, automotive body and components, wind and solar new energy, and new materials. Meanwhile, in order to empower the industry to operate digitally and efficiently, ENERPAT has launched core single machine products that are globally popular, covering crushing and tearing equipment, AI sorting equipment, briquetting equipment, and baler equipment. At present, ENERPAT's products and services have been exported to both domestic and international markets and operate stably and efficiently, receiving unanimous praise and recognition.

ENERPAT

# Product center

## Briquetting Machine

Briquetting machine

Shredder

Baler

Sorting machine

Auxiliary equipment



### Metal chip briquetting machine

This product is a high-performance integrated briquetting machine suitable for handling various metal chips. It uses hydraulic principle to directly cold press loose metal chips into cylindrical blocks of 70-200cm, specifically designed for scrap metal chips such as aluminum chips, iron chips, copper chips, alloy chips, etc. generated in the manufacturing production process.

# Shredder

Briquetting machine

Shredder

Baler

Sorting machine

Auxiliary equipment



## Single shaft shredder

This product is a medium and low speed, high torque single shaft shredding equipment designed specifically for tough or medium hardness materials. It is suitable for shredding materials such as films, plastic bottles, thick walled pipes, textile fabrics, cans, and cardboard boxes, etc., with uniform discharge and high output.



## Double shaft shredder

This product is an equipment that uses the principle of mutual shearing and tearing between two sets of knife rollers to shred materials. It has high shredding strength and efficiency, and is suitable for solid crushing of large pieces of waste, household waste, industrial waste, electronic waste, waste plastic, scrap metal, etc.



## Four shaft shredder

This product shreds materials through the principle of mutual shearing and tearing between four sets of knife rollers. Compared to a double shaft shredder it has greater shear force and is suitable for shredding various types of tough and ductile solid waste, such as household waste, industrial waste, electronic waste, etc.



## Hammer mill shredder

This product is the equipment that uses impact to break scrap metal materials. While breaking the metal, it can separate other impurities attached to the metal. It is suitable for breaking materials such as car shells, scrap aluminum, light and thin scrap steel, and waste household appliances, since the broken materials have high density and purity, and can be remelted into new products.



## Granulator

This product is designed specifically for materials such as fiberglass and sand containing films that are prone to equipment wear and tear. It is suitable for the crushing treatment of waste materials such as plastics, films, rubber, paper, cables, chemical fibers, etc., and is generally used as secondary crushing.

# Baler

Briquetting  
machine

Shredder

**Baler**

Sorting  
machine

Auxiliary  
equipment



## Hopper type metal baler

This product is a multi-purpose scrap metal baler designed with a hopper, which is suitable for compressing materials such as scrap iron, scrap aluminum, scrap steel, scrap copper, metal shavings, cans, home appliance shells, and non-ferrous metal products. The compression pressure of the main oil cylinder ranges from 100t to 500t, with good compression effect and sturdy packaging.



## Lid type metal baler

This product is a multi-purpose scrap metal baler with a lid cover design, which is suitable for compressing large pieces of high hardness scrap metal, such as steel, building steel bars, household appliance shells, aluminum profiles, and other materials. The compression pressure of the main oil cylinder ranges from 100t to 1,500t, achieving efficient compression and reducing land occupation.



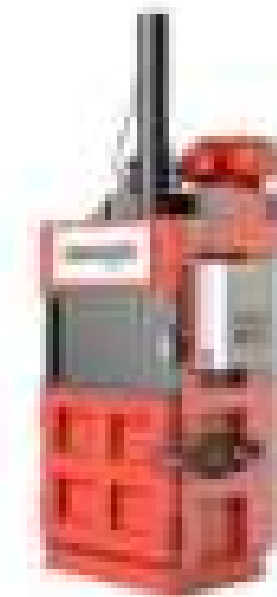
## Fully automatic horizontal baler

This product is a fully automatic baler using German automatic packaging technology. The bundled iron wire is high-strength quenched iron wire, suitable for packaging industrial waste, household waste, cardboard boxes, waste paper, straw, halm, crushed documents, palm, plastic film, woven bags and other materials.



## Bagging baler

This product utilizes two hydraulic cylinders to compress loose materials into pre-prepared plastic bags or PP bags. It is mainly used for materials such as wood shavings, sawdust, rice husks, coconut bran, waste clothing, oranges, peat soil, and green storage.



## Vertical solid waste baler

This product is a baler that uses iron wire or PP tape to compress and bundle loose materials. It is suitable for packaging and processing household waste, solid waste, cardboard, paper boxes, waste paper, plastic products, and other materials.



# Sorting machine

Briquetting machine

Shredder

Baler

Sorting machine

Auxiliary equipment



## AI intelligent sorting machine

This product is a terminal precision sorting machine that uses pure visual sorting technology for recyclable household waste. It is suitable for mixed plastic waste, mixed paper waste, urban household waste, construction waste, medical waste, etc.



## X-ray sorting machine

This product uses AI technology to detect material density for sorting. It is suitable for sorting light metals and heavy metals in various non-ferrous metals, and can also sort various non-ferrous metals, ferrous metals, non-metallic materials, etc.



## Eddy current sorting machine

This product adopts a sorting technology that utilizes different material conductivity. Non-ferrous metals will generate induced current in a high-frequency alternating magnetic field, while the magnetic field generated by this current is opposite to the direction of the original magnetic field, directly ejecting non-ferrous metals from the material in an instant. Therefore, it is suitable for sorting non-metals such as copper and aluminum from mixed materials.

# Auxiliary equipment

Briquetting machine

Shredder

Baler

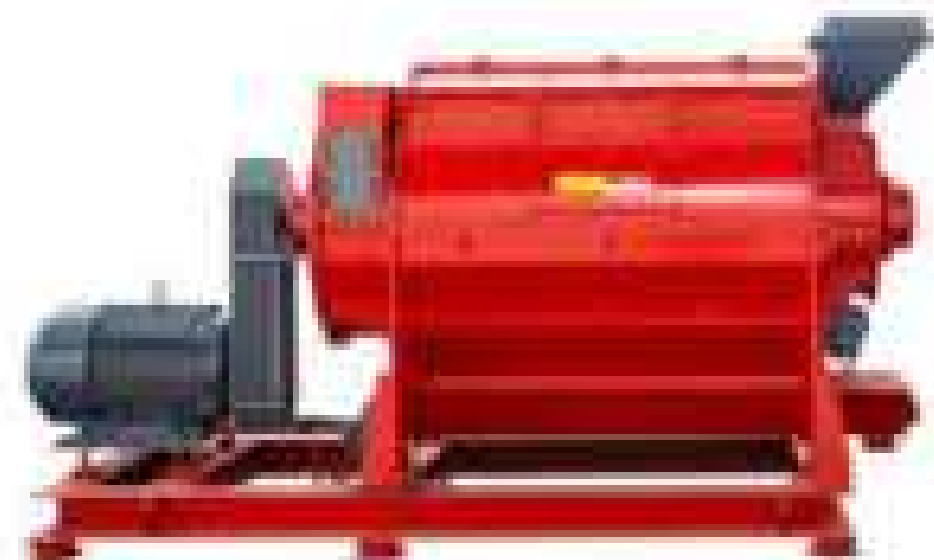
Sorting machine

Auxiliary equipment



## Deoiling machine

This product is a high capacity automated deoiling machine suitable for processing various metal chips. The dryness of the oil in the material after drying can reach over 97%, making it suitable for various metal cutting chips such as iron chips, aluminum chips, copper chips, etc.



## Horizontal dehydrator

This product adopts a centrifugal dehydration mode, which can quickly dehydrate materials and is suitable for rapid dehydration of thin film materials and sheet plastics.



## Friction cleaning machine

This product is used for cleaning sheet or strip shaped plastics with low hardness and small volume, such as plastic films and tape fragments. It has the advantages of high speed, low noise, high efficiency and energy conservation.



## Separation and sedimentation tank

This product is used for cleaning plastics with a density less than water, such as PE, PP films, bottle sheets, etc. It has the characteristics of uniform discharge speed and high cleanliness.

# Lithium battery crushing and recycling solution

The ENERPAT waste lithium battery shredding system integrates a feeding system, shredding system, fire protection system, maintenance and repair system, and intelligent monitoring system. It can handle various types of lithium batteries with a shredding efficiency of up to 4 tons/hour, and a coverage rate of less than 1% after shredding. In addition, the shredding discharge size can be adjusted to meet the requirements of coarse, medium, and fine shredding discharge.

## Battery type



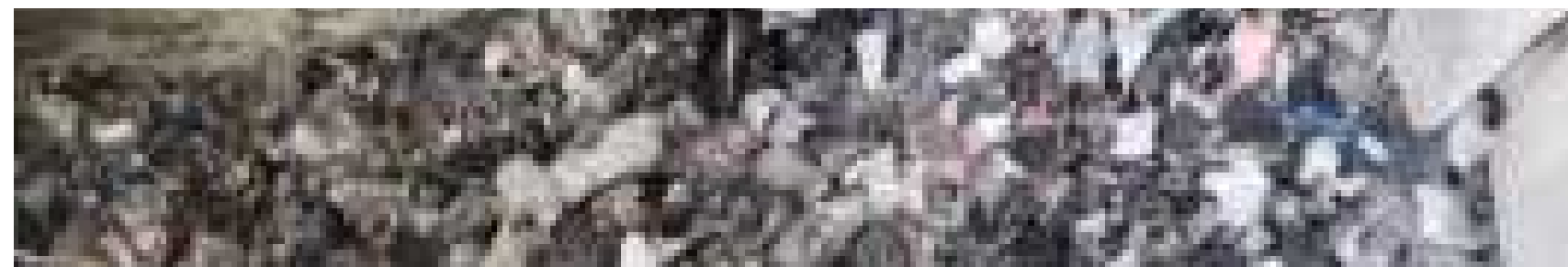
Blade battery

Square shell battery

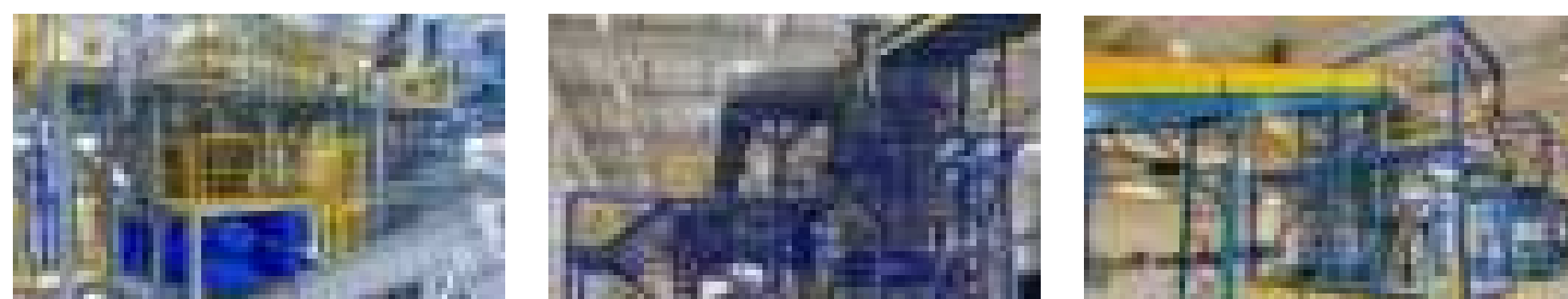
Soft pack battery

Cylindrical battery

## Shredding effect



## Customer site



A power battery regeneration technology company in Wuhan

Handling materials: Soft pack battery, blade battery  
Processing yield: 4,000kg/hour

An environmental protection technology company in Suzhou

Handling materials: Battery electrode  
Processing yield: 3,500kg/hour

An energy-saving equipment company in Anhui

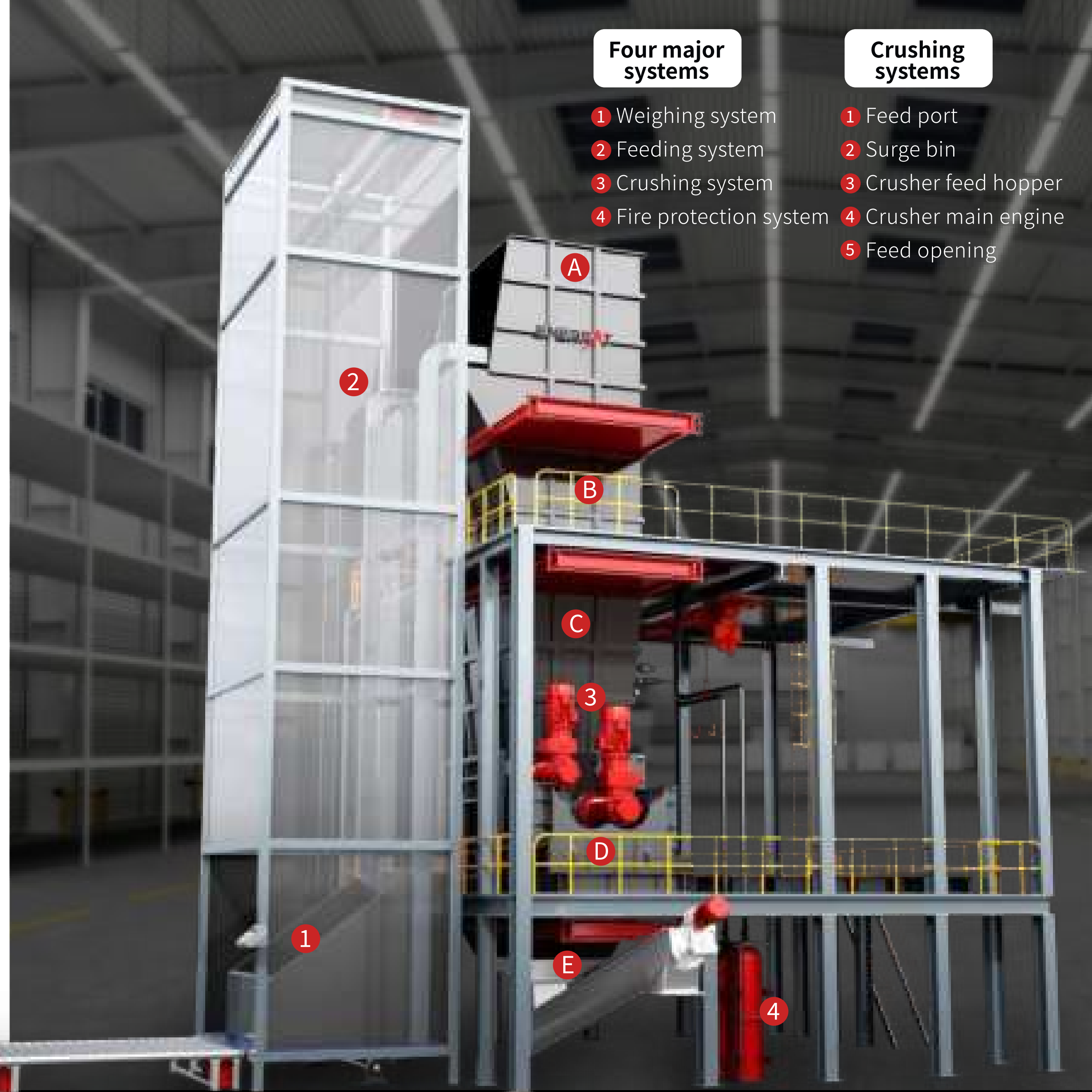
Handling materials: Automotive power battery  
Processing yield: 3,000kg/hour

### Four major systems

- 1 Weighing system
- 2 Feeding system
- 3 Crushing system
- 4 Fire protection system

### Crushing systems

- 1 Feed port
- 2 Surge bin
- 3 Crusher feed hopper
- 4 Crusher main engine
- 5 Feed opening

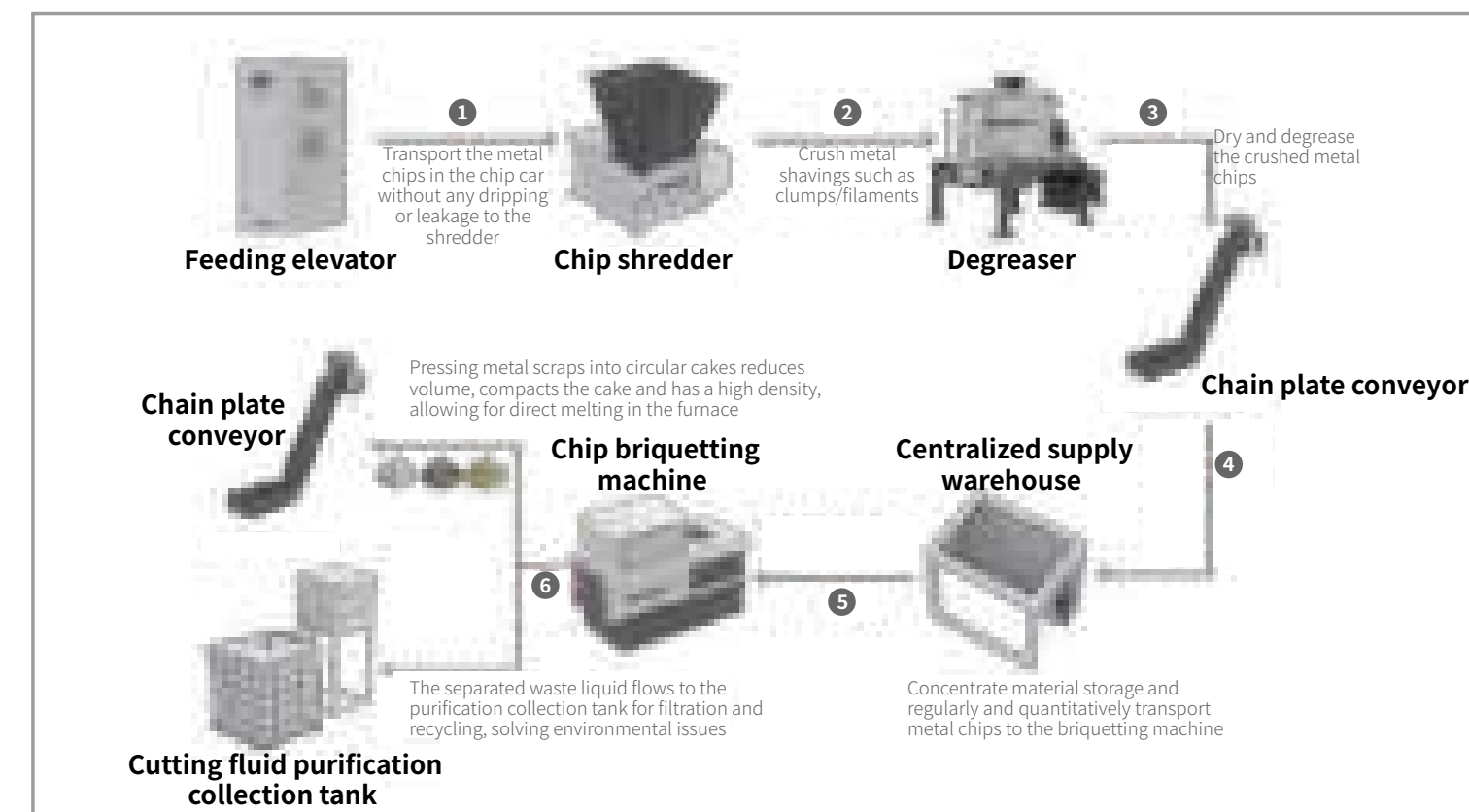




# Metal chips briquetting press line

This solution is used for the briquetting and recycling of metal chips such as iron chips, aluminum chips, copper chips, and alloy chips generated in the manufacturing production process. The entire production process adopts a fully automated disposal process, which can directly press the metal chips into shape. Meanwhile, the oil can be separated from the blocks. It has advantages such as reducing the footprint of waste chips, cleaning the factory, passing environmental audits, improving the return rate and recycling price, and helping enterprises reduce costs and increase efficiency.

## Metal chip briquetting processing process



## Processing effect



## Customer site



Region: Guangzhou  
Solid waste: Iron chips (particles)

Region: Indonesia  
Solid waste: Iron chips (shavings)

Region: Wuxi  
Solid waste: Aluminum chips (filiform)

Region: Huizhou  
Solid waste: Copper chips (filiform)

Scrap metal shredding and sorting processing process



# Scrap metal crushing and sorting solutions

This solution is suitable for various scrap metal products and adopts a modular design with a compact and reasonable layout. Non-ferrous metals and non-metals are separated through shredding and sorting, and the purity of the treated iron metal reaches over 98%.

Applicable materials



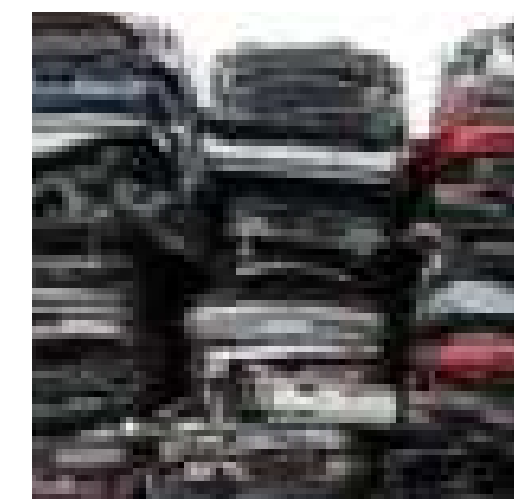
Light and thin scrap steel



Waste household appliances



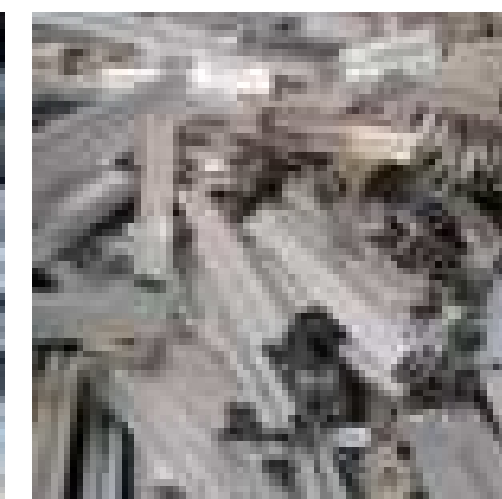
Scrap aluminum products



Car shell



Cast aluminum wheel hub

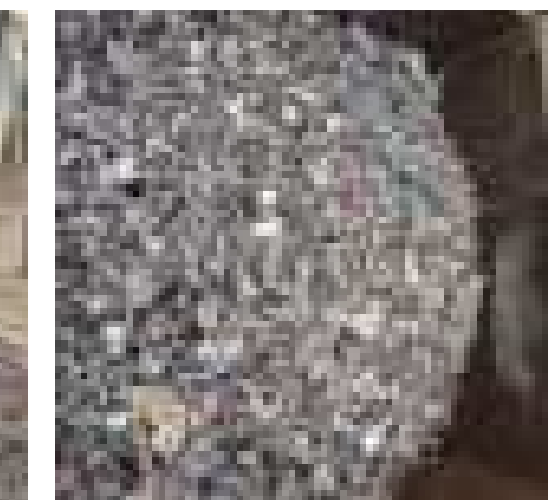


Aluminum alloy doors and windows

Crushing and sorting effect



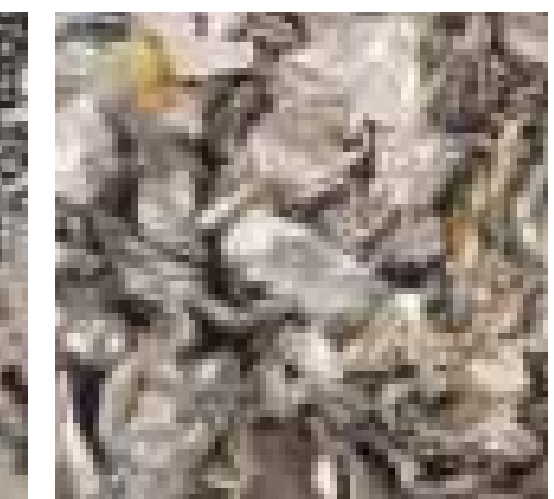
Non-metallic



Crushed materials



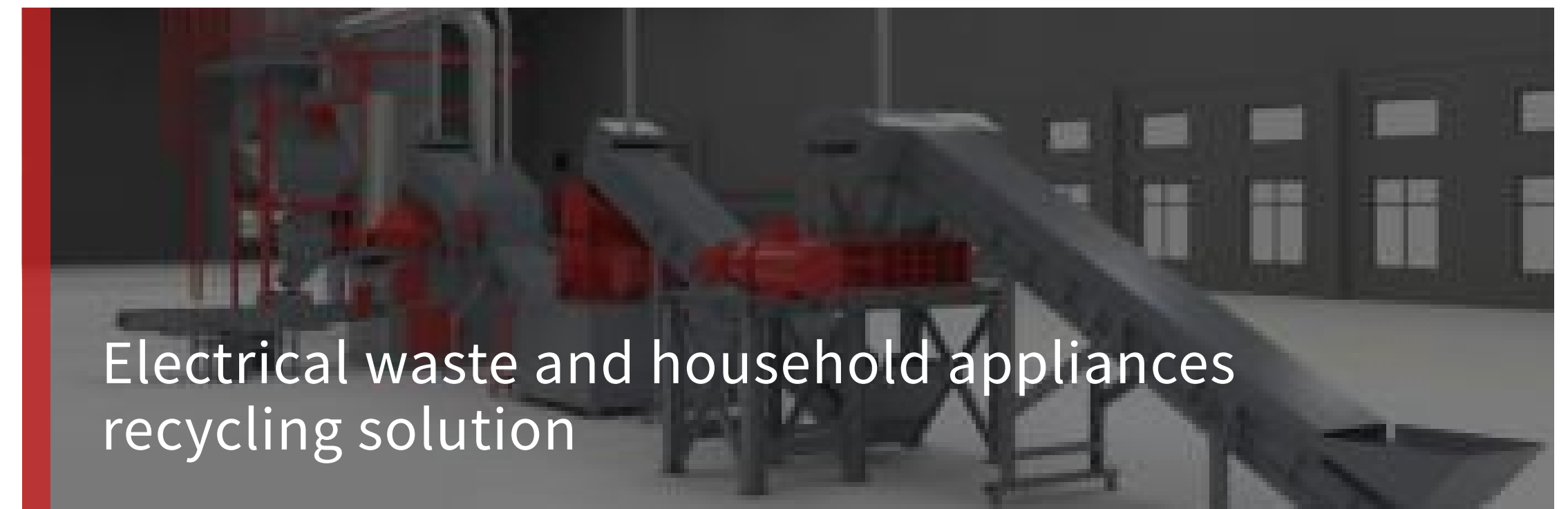
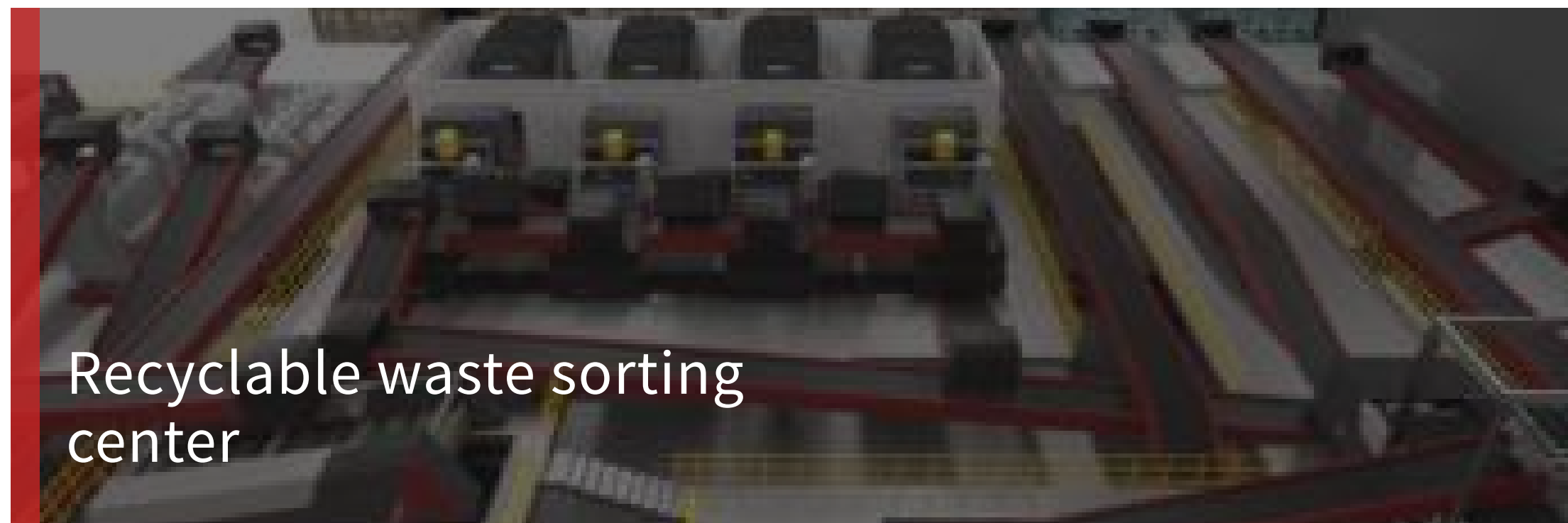
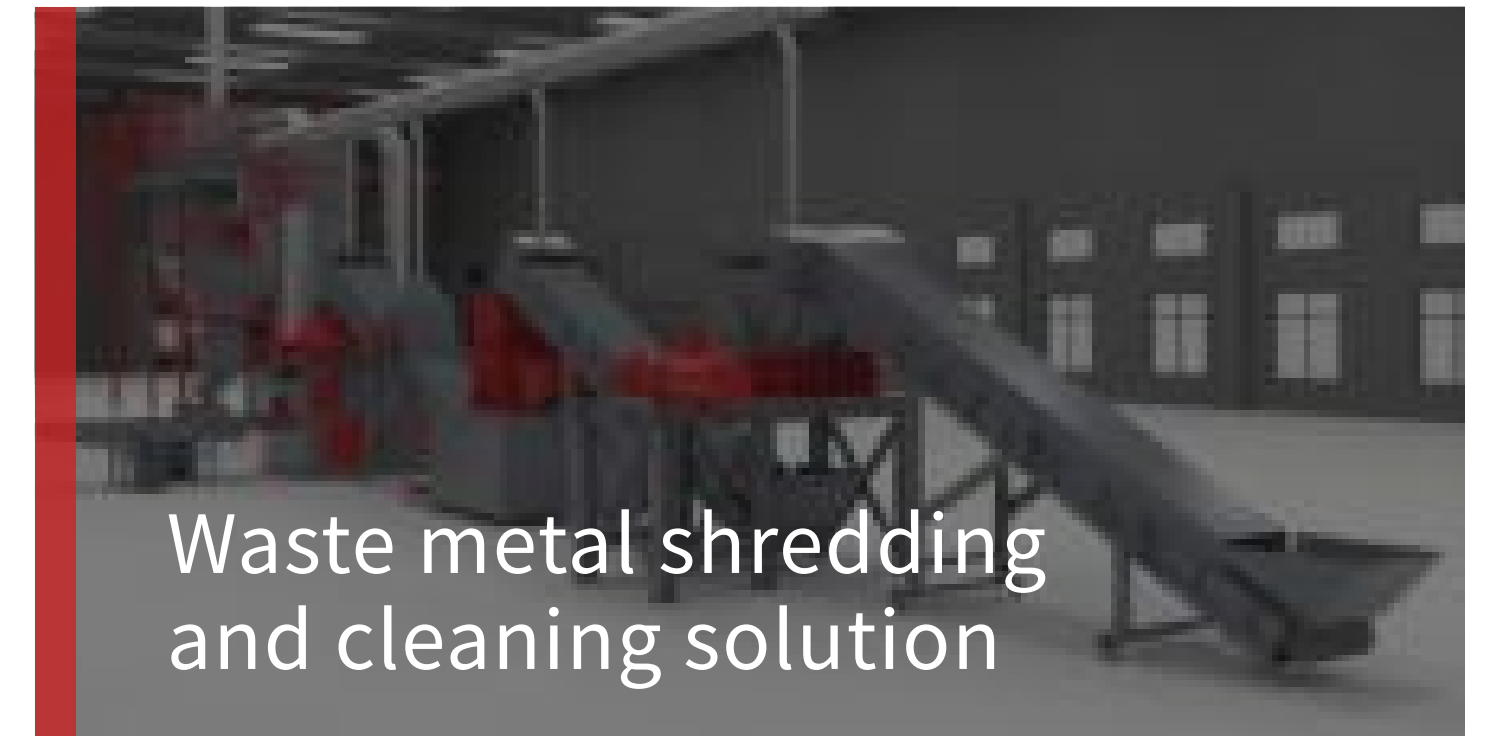
Ferrous metal



Non-ferrous metals



# Solid waste solutions



# Industry application



# Production strength



## Strong Breakthrough

Focusing on the field of solid waste treatment and recycling, concentrating all advantageous resources to serve customers

## Strong R&D

2 international invention patents and 33 national patents. Among them, 3 invention patents provide 3 standard information for the industry

## Strong Technology

Multiple research institutes gather technical engineers in mechanical, hydraulic, electrical, artificial intelligence, and automation fields

## Strong Strength

Group operated company with subsidiaries in China, Australia, and the United States, with three major production and assembly bases in the UK, China, and Germany



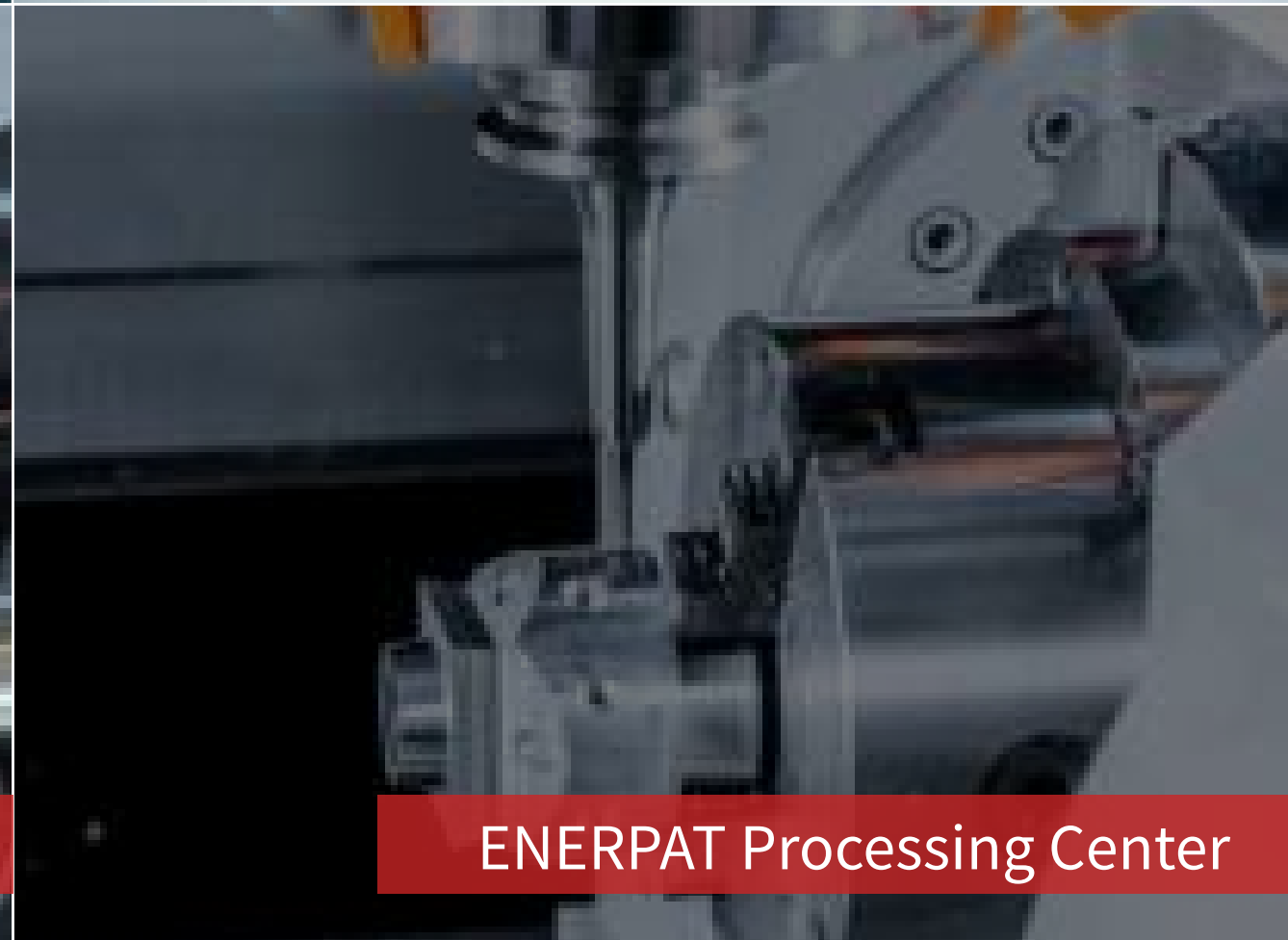
ENERPAT Intelligent Warehousing



ENERPAT Exhibition Hall



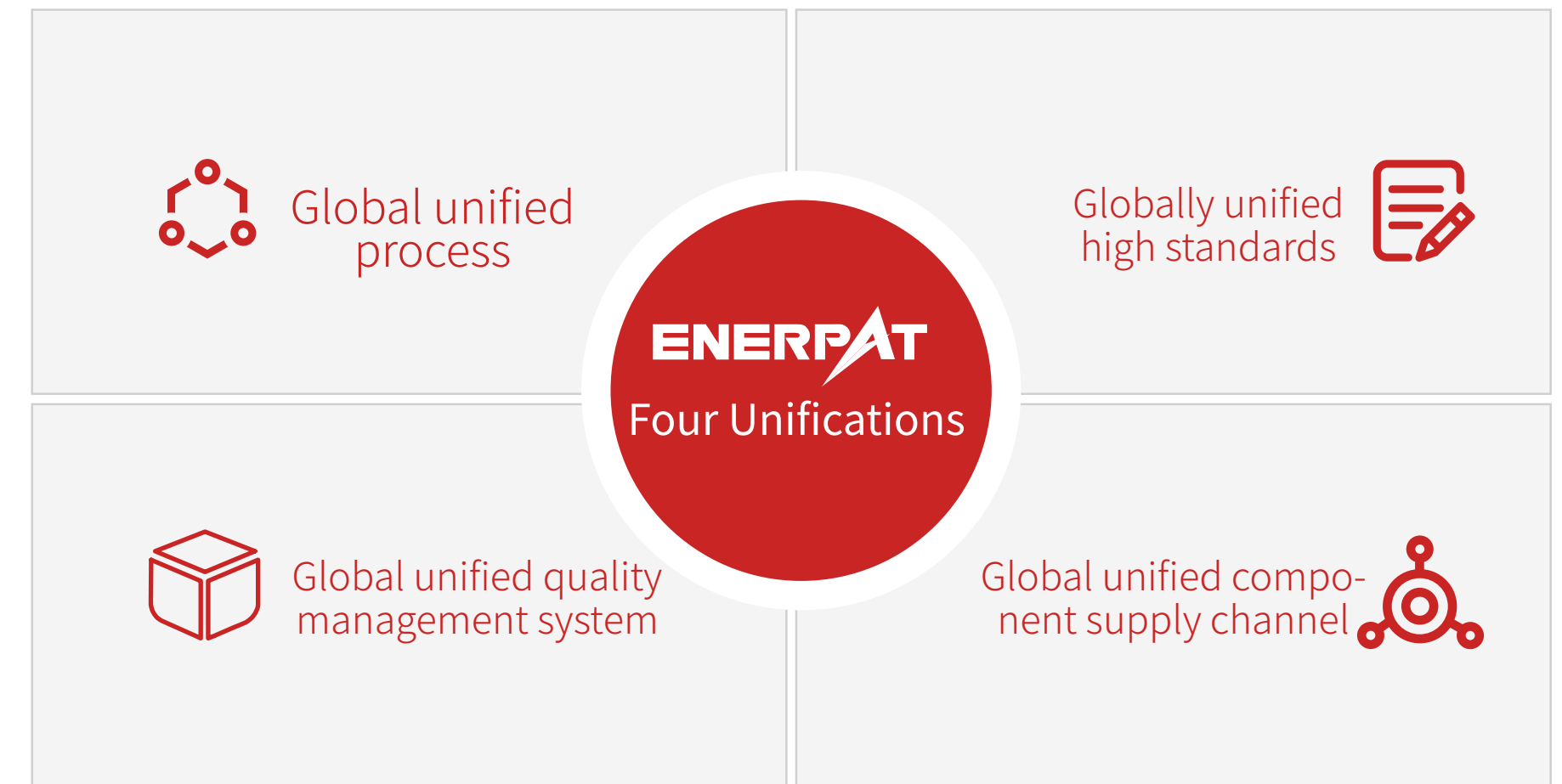
ENERPAT Laser Cutting



ENERPAT Processing Center



ENERPAT Welding Process



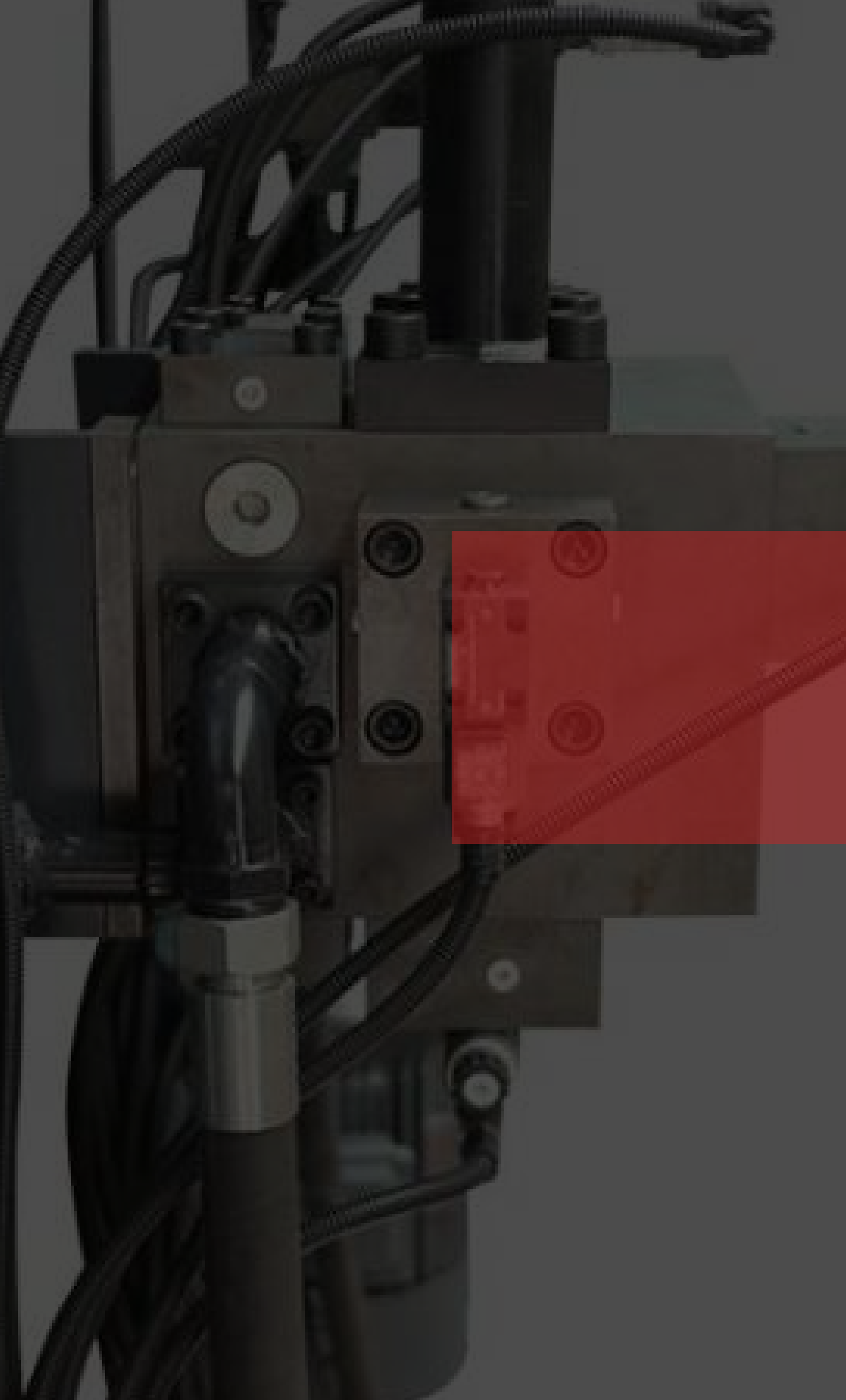
Quality Management System Certificate (SGS)



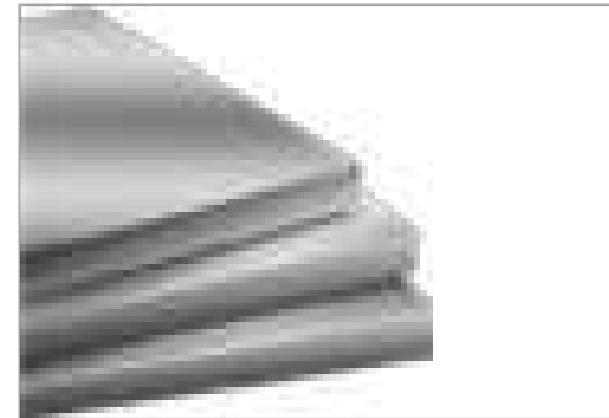
Invention Patent



CE EU Certificate



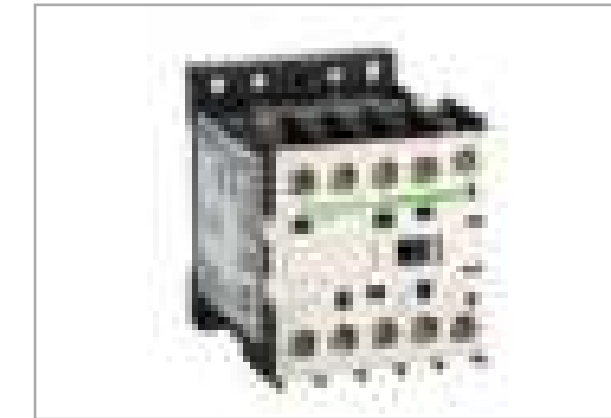
Baosteel Steel,  
Shanghai



Siemens Motor,  
Germany



Schneider Electric  
Appliances, France



Bonfiglioli Reducer, Italy

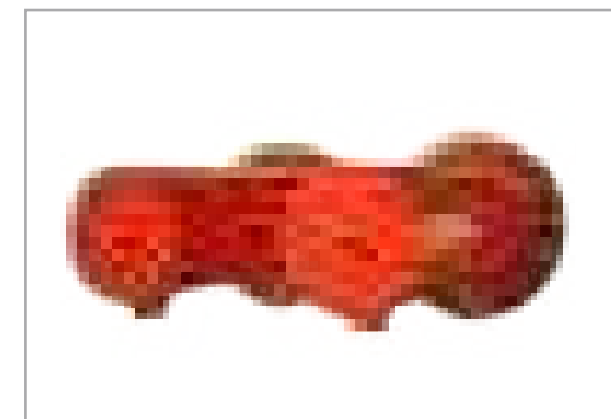


## Brand components

International first tier brand supplie



Rexroth Hydraulic Com-  
ponents, Germany



ENERPAT Oil Cylinder,  
UK



Dillinger Blade, Germany



Hallite Seal, UK

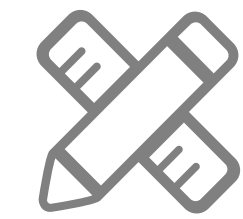


# Our services



## Professional consultation

Telephone/WeChat/Salesperson visiting/Visiting factory for inspection



## 3 free services

Free incoming material testing  
Free on-site survey  
Free solution design



## Installation and debugging training

Professional engineers conduct on-site installation and debugging, and provide on-site training



## 7 \* 24-hour after-sales service

365 days of remote technical support, with after-sales issues delivered on the same day in Jiangsu, Zhejiang, and Shanghai, and on the second day across provinces



## Our commitment

1 year warranty for the entire machine  
5 years warranty for the oil cylinder

# Customer cooperation

ENERPAT is a win-win situation with the world, and its products and services involve hundreds of industries such as new energy, automobile manufacturing, steel structures, shipbuilding, and engineering machinery. It has collaborated with multiple globally renowned manufacturing and resource recycling enterprises such as Veolia, GEM, CHALIECO, Hydro, Mercedes Benz, BMW, and others.





# ENERPAT

ENERPAT Products Global Customer Sites



# Corporate culture



## Our Mission

Technology creates a beautiful environment



## Our Vision

Where there is solid waste, there are ENERPAT's products and services.



## Our Value

Customer first, hardworking, loyal, professional, teamwork, simple and efficient.

ENERPAT SHOWROOM  
恩派特展示厅



**ENERPAT**

Global Waste Disposal System Supplier

**Official website:**

[www.enerpatrecycling.com](http://www.enerpatrecycling.com)

**Email:**

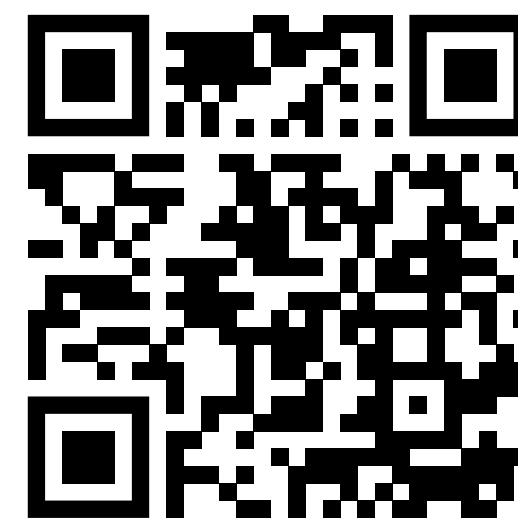
[info@enerpatgroup.com](mailto:info@enerpatgroup.com)

**Headquarters address:**

5th and 6th floors of Zhongxin Building in Suzhou Industrial Park, China

**Factory address:**

No. 2 Xintai Road, Changqing Town, Rugao City, Jiangsu Province



 **YouTube**  
Official QR code



 Official  
QR code