

InnoLIFT

A U S T R A L I A

The Revolutionary Selfloader for Vans and Light Trucks



In Actions



Proudly manufactured in Finland

Our Unique Finnish Selfloader



After loading the cargo, InnoLIFT climbs into the van itself. The space needed is the same as with a hand pallet truck. The unloading process is as easy as the loading.



The new InnoLift lifts up to 1000 kilograms. The new easily rotating wheels enable agile maneuvering.

Efficient

With a van and an InnoLift, you can load, unload and deliver your cargo safely and efficiently to your client. Thanks to the fast operation you are able to make even more deliveries.

Safe

Ergonomic design and simple operation let's you avoid health and safety risks. It also reduces sick days due to strain. The InnoLift is very easy and safe to operate.

High-quality

Careful planning, superior standard parts and high class manufacturing ensure reliable and durable products. The InnoLift is CE marked and it meets all international quality standards.



The InnoLift Selfloader Lifter for closed pallets (Chep) is also available

InnoLIFT in use



1. Load the cargo into the van.



2. Pull the support legs out and lift the chassis up.



3. Push the support legs back in.



4. Push the InnoLift and the cargo into the van.

2021 Self Propelled Version of the InnoLIFT



New self-propelled InnoLIFT model for cars with a towbar.
 This is because the rear plate for this model is only attachable to a towbar.

The new self-propelled models help with handling of the more heavier cargos.
 Max capacity 1 000 kg.

Currently there two self-propelled models, 900mm or 1150mm Loading Height.



Cover:

Robust Steel Cover as fitted to model 5 InnoLIFTs.



Handle:

Control the direction with the handle. With the buttons on the handle, you can lift and lower the forks and control the speed of the machine.



Assistance buttons:

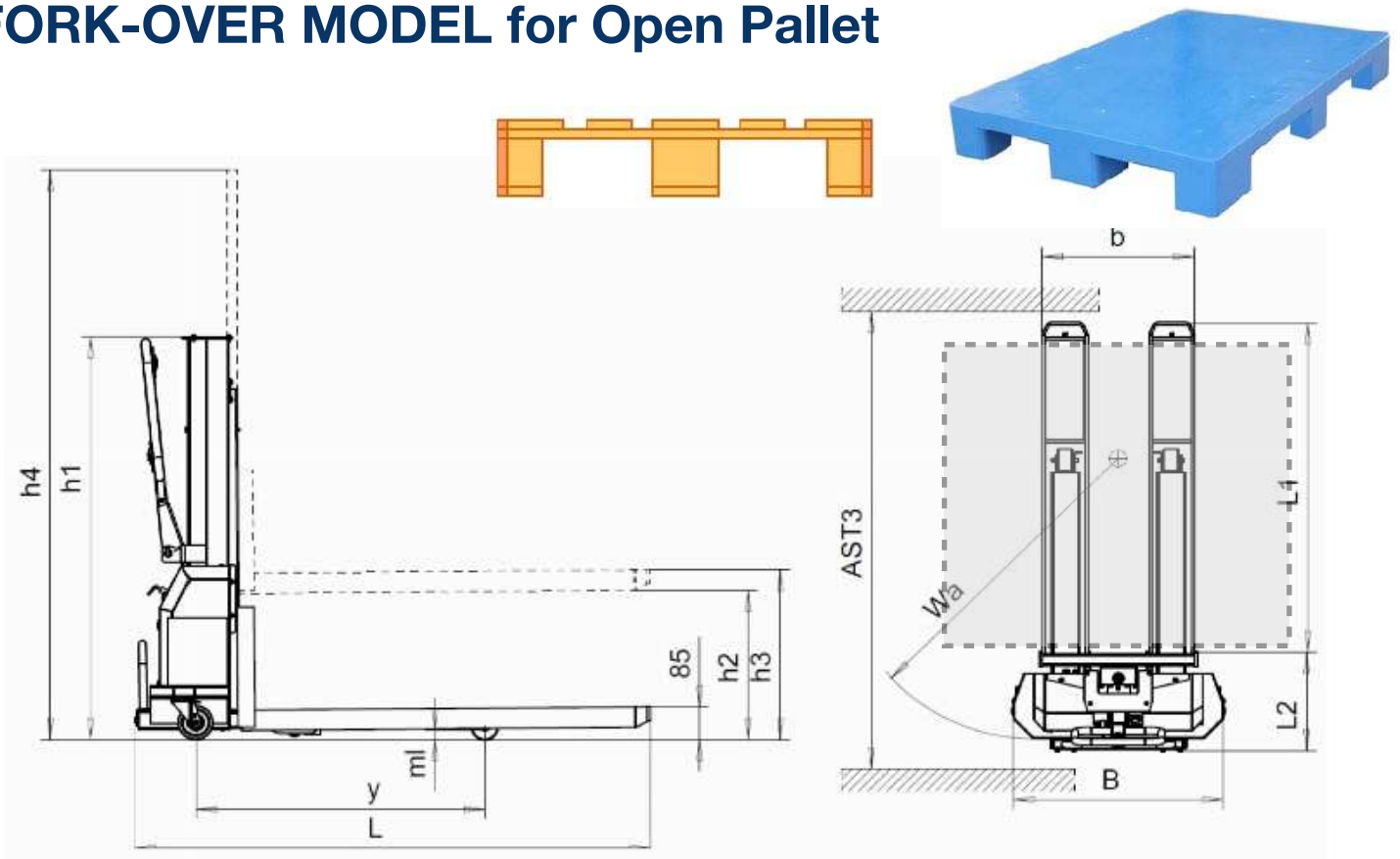
With buttons on the left side you can control the speed of the machine.
 With buttons on the right side you can control the lifting and lowering of the forks.



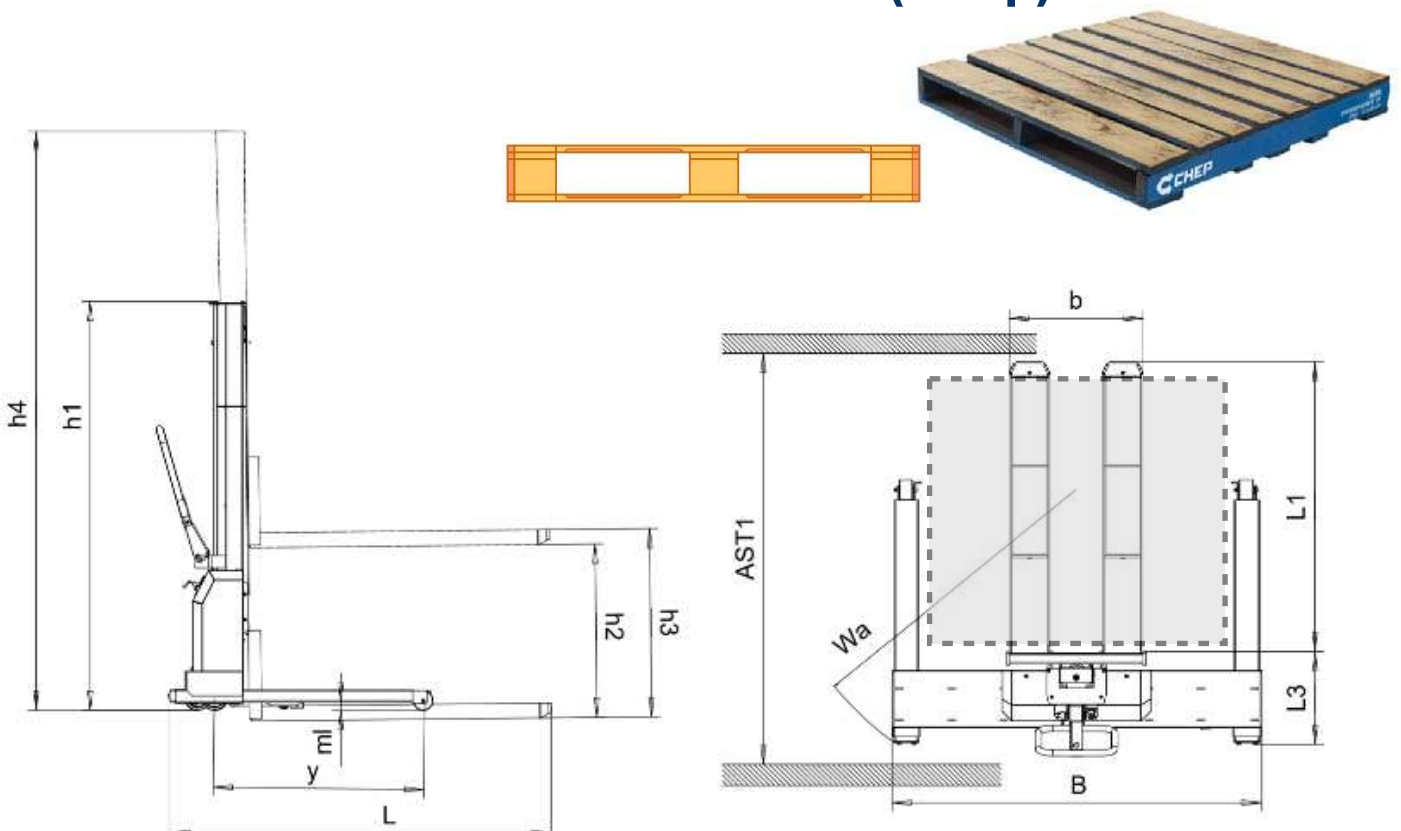
Power:

- 1) Emergency stop switch
- 2) Battery indicator & hour-meter
- 3) Main key switch
- 4) Charging plug

FORK-OVER MODEL for Open Pallet



STRADDLE MODEL for Closed Pallet (Chep)



FORK-OVER MODEL for Open Pallet or Skids



IM600.800

IL600.1000

IXL500.1250

STANDARD MODELS “Fork-Over”

	Power	Capacity kg	Overall Lowered Height * mm (h1)	Loading Height mm (h2)	Lifting Height mm (h3)	Chassis Width mm (B)
# IM600.800	Battery	600	1200	700	800	760
# IL600.1000	Battery	600	1400	900	1000	760
# IXL500.1250	Battery	500	1650	1150	1250	760



IV300.800



IS600.700

IL1000.1000

IXL800.1250

IXXL400.1400

SPECIAL MODELS “Fork-Over”

	Power	Capacity kg	Overall Lowered Height * mm (h1)	Loading Height mm (h2)	Lifting Height mm (h3)	Chassis Width mm (B)
# IV300.800	Manual	300	1080	700	800	710
# IS600.700	Battery	600	1100	600	700	760
# IXXL400.1400	Battery	400	1800	1300	1400	760
# IXXL700.1550	Battery	650	2010	1450	1550	1000
# IXL800.1250	Battery	800	1710	1150	1250	1000
# IL1000.800	Battery	1000	N/A	700	800	N/A
# IL1000.1000	Battery	1000	1460	900	1000	1000

* Key Factor for Vans

All prices/specifications subject to change without notice

STRADDLE MODEL for Closed Pallet (Chep)



STRADDLE MODELS (for closed pallets / Chep Pallet)

	Power	Capacity kg	Overall Lowered Height * mm (h1)	Loading Height mm (h2)	Lifting Height mm (h3)	Chassis Width mm (B)
# IL600.1000.US	Battery	600	1400	900	1000	1290
# IXL550.1250.US	Battery	550	1650	1150	1250	1490
# IXXL500.1400.US	Battery	500	1800	1300	1400	1490

SELF PROPELLED MODEL



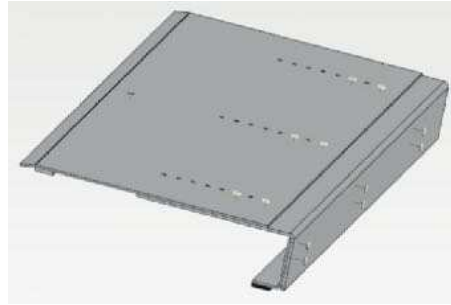
SELF-PROPELLED MODELS With a Drive Motor

	Power	Capacity kg	Overall Lowered Height * mm (h1)	Loading Height mm (h2)	Lifting Height mm (h3)	Chassis Width mm (B)
# EL.1000.1000	Battery	1000	1470	900	1000	1000
# ELX.1000.1250	Battery	1000	1720	1150	1250	1000

* Key Factor for Vans

All prices/specifications subject to change without notice.

ACCESSORIES OR OPTIONS



Innolift OPTIONS

Description

Innolift OPTIONS	Description
# 21226	Cable system for charging while driving
# 61598C	Rear Plate 800mm, adjustable (covers 90% of the vehicles)
# 61597	Rear Plate 1000mm, adjustable (covers 90% of the vehicles)
# 20251	Closed AGM Power Battery 12V 34Ah with machine - Upgrade
# 21383	Microprocessor Smart Charger 12V/10A, 240V - Spare part
# 20018	Microprocessor Smart Charger 12V/10A, 110V US - Spare part

IMPORTANT MODEL SELECTION INFO: Palletized and non-palletized freight loading height, lifting height, door opening height and minimum width of cargo area (usually the wheel housings) must all be taken into consideration when choosing a unit. PLEASE FILL OUT the "Send us your dimensions" form at the bottom of this page first. Our customer service team will review your form and contact you to help ensure you find the right loader for your needs.

*Cargo van loading requires the use of our Adjustable, Aluminum Rear Plate accessory for safe loading over bumpers with a step

*InnoLIFT Loaders come with a standard 1-year parts warranty. Spacepac offers a 2-year extended parts warranty.

*InnoLIFT Loaders include a 12V/44A rechargeable Sealed battery, 12V/10A AC wall-charger, and an optional DC in-vehicle charger.

*InnoLIFT Loaders are designed to operate mainly indoors and on solid, flat and parallel ground; avoid rough terrain and slopes greater than 5 degrees for safe use. Operating outside is permitted if InnoLIFT is used on solid ground and in dry weather.

All prices/specifications subject to change without notice.

**Not sure which model to suit your application or vehicle?
Please send us your details and dimensions:**

Name

Email

Phone

Company

1. What is your freight-lifting requirement?
The maximum weigh you need to lift into and out of your vehicle.

2. What is your loading height?
Measurement from ground to the cargo floor.

3. If loading into an enclosed vehicle, what is your door opening height (for lowered height)?
Measurement from cargo floor to lowest point of door opening (accounting for door hinges).

4. If loading into an enclosed vehicle or pickup truck, what is the distance between your rear wheel housings?
Re: forkover or straddle type

5. Are you using Pallets, Skids or both? (Open or Closed (Chep) Pallets)

6. Enter any additional vehicle or loading information here.

Please fill this form and email us at sales@emoveit.com.au