

# TMK 200 INTRODUCTION

**NEW!**

## BRACKETS ARE ON BOLT-ON EXTRA PLATES

*Makes it possible to use the shear with multiple machines*

## EFFICIENT ATTACHMENTS

*Easy to also retrofit*

## CAPSULAR STRUCTURE

*Light & durable desing*

## 10MM BLADE

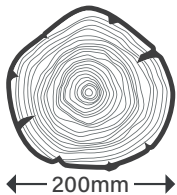
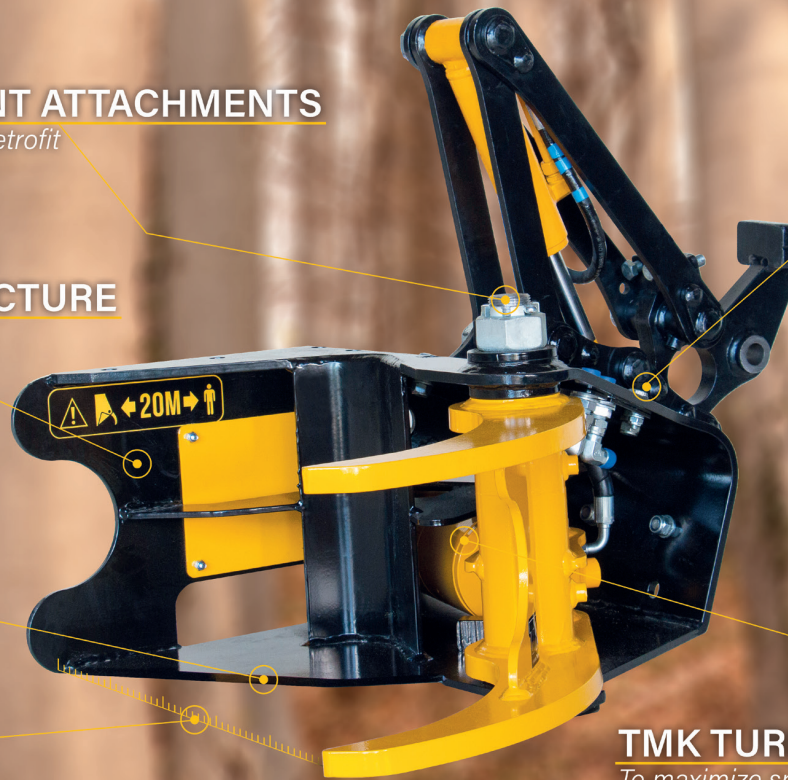
*Hardox 500*

## MAX. OPENING

*700mm*

## TMK TURBO

*To maximize speed & strength*



← 200mm →



165kg



2-8 ton

## TMK 200

### New kind of agility.

TMK 200 "Beaver" is the newest addition to the TMK product family. Beavers small size and precisely designed structure makes the shear good fit to for example tractor cranes, miniloader and small excavators. This powerhouse, weighing only 165 kg, cuts 200 mm tree comfortably. Thanks to its light weight and strong capsular structure TMK 200 fits to wide range of works from ditch clearances to forest thinnings. Custom shaped blade keeps the big trees close to the grapple, maximising the cutting force, and scissor-like cutting motion cuts neatly also the smaller bushes and leaves a really clean cut. TMK Beavers recommended hydraulic pressure is 160-250 Bars depending on the chosen cylinder.



### COLLECTOR

#### Together in a bunch.

TMK 200 can be equipped with a collector, which increases the productivity of the shear significantly. Collector works automatically with the shears open-close motion all the way to the point where the bunch is dropped. When the shear is closed, the collector opens up to the other side of the trees, and when the shear is opened again, the collector first grabs the trees firmly in its grip. This way the trees stay all the time firmly in hand. Only when the bunch is dropped one electric line is needed to let the bunch go from the grip. Collectors simple operation enables fast and comfortable working. Thanks to its high productivity, the collector is TMKs most popular attachment worldwide.

NEW! Collector is now available also without electricity! Ask more from your local dealer, or directly from TMK.



### LINKAGE

#### Trees stacked with style.

TMKs Linkage brings more speed and versatility to TMK Tree Shears use. Linkage was originally designed to speed up the working with hydraulic extension beam, but now it enables the shear to be used in machines that doesn't have a feature to tilt the shear up and down. Now we can offer a solution to use the shear with tractor cranes and harvesters. Linkage tilts 165 degrees, which ensures wide movements and small enough cylinder keep the motion fast. Linkage is attached to the shear with bolts, so it can be taken off quickly and used again on a different machine when needed. NEW! In cooperation with Palfinger we made a linkage that is fits directly to all EPSOLUTION series cranes! Ask more from your local dealer, or directly from TMK.



## TMK 200 ATTACHMENTS



### CYLINDER OPTIONS

TMK 200 can be equipped with different cylinder options.

1. Normal main cylinder, recommended pressure 180-250 Bars.
2. Bigger main cylinder, recommended pressure 160-180 Bars.
3. TMK Turbo is patented telescopic cylinder, where the smaller cylinder works always first, keeping the motion fast. When the smaller cylinder runs out of power, the bigger cylinder starts working automatically. This way we get really fast motion without sacrificing the strength at all. TMK Turbos' recommended pressure is 160-180 Bars. TMK Turbo and bigger main cylinder are excellent choices when working with tilt rotators, when the reduced pressure doesn't affect the maximum cutting capability. TMK Turbo grows your work efficiency up to 15%!



TMK 200

	Normal main cylinder	Bigger main cylinder	TMK Turbo cylinder
Cylinder features			
Max. pressure	250 Bar	180 Bar	180 Bar
Recommended pressure	180-250 Bar	160-180 Bar	160-180 Bar
Liters/min	80-150 l/min	100-150 l/min	50-150 l/min

