

## Sonosite ST

Procedural partner | Designed for efficiency



# The art of care.

Sonosite ST — envision your course of action with the clarity of a point-of-care ultrasound system designed to move with you from diagnosis to procedure.



# Make every procedure a masterpiece.

The assurance you're looking for in medical imaging is here. With its 21" all-touchscreen display, Sonosite ST is engineered to enhance the way you approach point-of-care ultrasound procedures.

Featuring an intuitive user interface for optimal workflows, Sonosite ST connects clinicians to the needs of patients with nimble performance and precision, helping you move forward with confidence.



From decades of industry insight and innovation, Sonosite ST is meticulously designed for the demands of the job. Engineered to advance from diagnosis to procedure enabling clinicians to act with confidence at every turn.



## Sonosite image clarity.

With its sleek 21" all-touchscreen interface, Sonosite ST incorporates the image clarity you have come to know and rely on from a Sonosite system.

## Workflow simplified.

Information at your fingertips — with its intuitive interface, Sonosite ST exists to guide and be guided all while improving workflows, giving you time to do more of what you do best, providing patient care.



## Streamlined design.

Sonosite ST is designed to accommodate how you move and where you go — engineered to adjust to the needs of the clinician and procedure, putting all the tools in all the right places.

# Insight in hand.

## 21" portrait display

Sleek 21" all touchscreen display with large image area.

## Optimised exam types

Most-needed annotations and calculations for workflow efficiency.

## Auto Steep Needle Profiling (SNP)

In-plane needle visualisation from multiple angles designed to provide enhanced visualisation with a single touch.

## On-board education

More than 150 scan-along tutorials are on board including Anaesthesiology, Pain Management, and Musculoskeletal imaging.



## Power cord management

Prevent tangles with power cords confined within the stand column.

## Versatile storage solutions

Choose different sized storage bins and left or right-sided gel/wipes holder configurations to best suit your workflow needs.

## Optional large storage bins

Designed to keep your procedural tools organized.

## One-step adjustable height

System height can be raised or lowered for a wide range of users.

## Low-profile wheelbase

Enables you to position the system close to the bedside for better access to care.



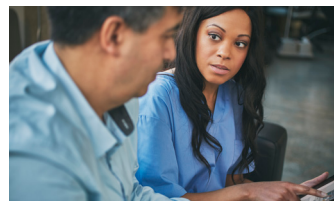
## Data management and connectivity

Wi-Fi, ethernet port, 1080p digital video output compatible with 1080p displays, (2) USB 2.0 ports, (2) USB 3.0 ports, (1) dedicated USB port for optional printer.



## Guide needles precisely

Auto Steep Needle Profiling helps in-plane needle visualisation from multiple angles with one system interaction. The clinician simply advances the needle at the angle optimal to reach the target.



## Education at your fingertips

Sonosite is dedicated to clinician education. More than 150 scan-along education tutorials are onboard for COVID-19, diagnosis, procedures, pathology, system and transducer use.



## Rest assured with data security

Sonosite ST includes robust security features to keep patient information safe and networks secure. The system meets FIPS199, FIPS200, and NIST 800-53.

# Equipped for your procedures.



## P5-1

**MHz**  
5-1 MHz Phased

**Scan depth**  
5-35 cm

### Exam types

Abdomen  
Cardiac  
Focused Cardiac  
Lung

Obstetrics  
Orbital  
Transcranial Doppler (TCD)



## L19-5 ●●

**MHz**  
19-5 MHz Linear

**Scan depth**  
1-6 cm

### Exam types

Arterial  
Lung  
Musculoskeletal  
Nerve

Ophthalmic  
PIV  
Superficial  
Venous



## L15-4 ●

**MHz**  
15-4 MHz Linear

**Scan depth**  
1.5-6 cm

### Exam types

Arterial  
Breast  
Carotid  
Musculoskeletal

Nerve  
Superficial  
Venous



## L12-3 ●

**MHz**  
12-3 MHz Linear

**Scan depth**  
1.5-9 cm

### Exam types

Arterial  
Breast  
Carotid  
Lung  
Musculoskeletal

Nerve  
Ophthalmic  
PIV  
Superficial  
Venous



## C5-1 ●

**MHz**  
5-1 MHz Curved

**Scan depth**  
4.7-30 cm

### Exam types

Abdomen  
Gynaecology  
Lung  
Nerve

Musculoskeletal  
Early Obstetrics  
Obstetrics  
Spine



## C10-3 ●

**MHz**  
10-3 MHz Curved

**Scan depth**  
3-18 cm

### Exam types

Abdomen  
Gynaecology  
Lung  
Nerve

Musculoskeletal  
Spine



## IC10-3 ●

**MHz**  
10-3 MHz Curved

**Scan depth**  
3-15 cm

### Exam types

Gynaecology  
Early Obstetrics  
Obstetrics  
Prostate

## Optional Needle Guide Starter Kit

- CIVCO Infiniti Plus™ In-Plane Ultrasound Needle Guide
- CIVCO AccuSITE™ Out-of-Plane Ultrasound Needle Guide
- CIVCO Disposable Endocavity Needle Guide

# Enhanced point-of-care ultrasound for your medical specialty

## Anaesthesia

### Equipping care providers with procedural insight.

Sonosite ST provides a large portrait touchscreen display, giving clinicians an immersive experience to help guide procedures and assessments such as regional nerve blocks and gastric volume.

#### **Expanded visibility.**

Sonosite image clarity helps you distinguish anatomical details, supporting needle precision and accuracy, housed in a seamless form factor, sleek panel 21" touchscreen display that's visible across the bedside.

#### **Auto Steep Needle Profiling (SNP).**

With the touch of a button, the Auto Steep Needle Profiling helps guide needle placement for more precise blocks and injections.

## Musculoskeletal

### Designed to bring clinicians closer.

Supporting Sports Medicine, Orthopaedics, Physiatry, Rheumatology and other related specialties to help you accurately diagnose and treat a variety of functional conditions involving tendons, ligaments, muscles, bursae, joints, cartilage, or peripheral nerves.

#### **Consolidated footprint.**

The sleek design and small footprint allows for easier access to patients and procedures, with effortless manoeuvring around the clinic, and features one-step height adjustment for a range of users.

#### **Immersive viewing experience.**

Sonosite image clarity on a large portrait touchscreen display allows clinicians to perform soft-tissue assessments and communicate with the patient to demystify complications and treatment needs.

## Vascular Access

### Raising the bar for procedures.

When accuracy is essential, Sonosite ST aids clinicians in placing difficult peripheral IVs and central lines, helping them guide needle placement during procedures.

#### **Workflow Simplified.**

With an intuitive user interface including integrated optimised exam types allowing clinicians to guide needle placement, easy system height adjustments, versatile storage, and a large easy-to-clean display — Sonosite ST is a proficient procedural partner.

#### **Easy to use. Easier to learn.**

A library of FUJIFILM Sonosite onboarding tools and scan-along tutorials await clinicians who utilise Sonosite ST for your ultrasound-training needs.

# Sonosite ST Ultrasound system specifications

General system and stand specifications	
Dimensions width x height unless otherwise stated	
<b>Stand footprint</b>	23 in x 25.4 in 58.4 cm x 64.5 cm
<b>Maximum height (system and stand)</b>	68 in/ 172.6 cm clinical monitor up
<b>Minimum height (system and stand)</b>	53.75 in/ 136.5 cm clinical monitor down in transport position
<b>Height adjustment range</b>	9.8 in/ 25 cm
<b>Clinical Monitor Tilt</b>	0 to 60 degrees (0 degrees tilting forward from vertical, 60 degrees tilting back from vertical)
<b>Weight</b>	109.3 lbs/ 49.6 kg
<b>System controls</b>	Touch Screen
<b>Clinical monitor</b>	
Monitor size	21.3 in/ 54.1 cm
Display size	17.01 in x 12.76 in
Image size	43.2 cm x 32.4 cm 10.03 in x 7.53 in 25.49 cm x 19.12 cm
<b>Clinical monitor resolution (minimum)</b>	
Display size	1600 x 1200 pixels
Image size	944 x 708 pixels
<b>Transducer connections</b>	(2) Transducer ports
<b>Immersion rating (transducers)</b>	IPX7
<b>Operating system</b>	Windows 10 IoT Enterprise 2019 LTSC
<b>Architecture</b>	Digital broadband
<b>Dynamic range</b>	Up to 183 dB
<b>Grey scale</b>	256 shades
<b>HIPAA compliance</b>	FIPS199, FIPS200, and NIST 800-53

## User interface

**Touch Screen on Clinical Monitor:** Projected Capacitive (PCAP) touchscreen  
**Touch Screen Main Controls:** TGC (Time Gain Compensation), Gain Slider, Depth, Cine Slider, Save Clip, Save Image, Freeze, Colour, M-Mode, and 2D.  
**Display formats for duplex imaging:** 1/3 and 2/3, 1/2 and 1/2, 2/3, and 1/3, and side by side duplex

## Image modes

2D Broadband Imaging, Tissue Harmonic Imaging, Pulse Inversion Harmonic Imaging, M-Mode, Colour Velocity Doppler (CVD), Colour Power Doppler (CPD), Colour Variance Mode (cardiac only)

## Licensed option

Pulsed Wave Doppler (PW), Tissue Doppler Imaging (TDI) (Cardiac Only), Continuous Wave Doppler (CW) (Cardiac Only)

## B-Mode Imaging Features

### Sonosite proprietary speckle reduction algorithm

### SonoADAPT Imaging Technology:

Adjusts imaging parameters based on depth eliminating complicated manipulation of multiple controls.

**SonoMB:** Multi-beam technology to effectively reduce speckle artifact, enhance tissue contrast, and improve border detection.

## Auto steep needle profiling

(Available for these transducers and exams)

**C5-1:** Musculoskeletal, Nerve, Spine

**L19-5:** Arterial, Musculoskeletal, Nerve, PIV, Superficial, Venous

**L12-3:** Arterial, Breast, Carotid, Musculoskeletal, Nerve, PIV, Superficial, Venous

**L15-4:** Arterial, Breast, Carotid, MSK, Nerve, Superficial, Venous

**Needle guide starter kits:** C5-1, IC10-3, L19-5, L12-3, L15-4

## Basic measurements

### 2D Measurements:

Distance (10 Measurements), Curved Distance, Area, Circumference, Ellipse, Manual Trace, Volume, Target Depth, Angle

### Doppler Measurements:

Velocity, 2-Point Velocity, Slope, Time, Manual Trace, Auto Trace, Heart Rate, Resistive Index, Pulsatility index, Systolic/Diastolic Ratio, Volume Flow, Velocity Time Integral, TAM, TAP, PSV, EDV, MDV  
 Doppler waveforms can be traced manually or automatically

### Automatic Trace Results (determined by exam type):

Velocity Time Integral, Peak Velocity, Mean Pressure Gradient, Mean Velocity on Peak Trace, Pressure Gradient, Cardiac Output, Peak Systolic Velocity, Time Average Mean, Systolic/Diastolic Ratio, Pulsatility Index, End Diastolic Velocity, Minimum Diastolic Velocity, Acceleration Time, Resistive Index, Time Average Peak, Gate Depth, Heart Rate

### M-Mode Measurements:

Distance, Time, Slope, Heart Rate

## Warranty

Sonosite offers an industry-leading, 5-year standard warranty on most ultrasound systems and Sonosite-manufactured transducers to ensure your equipment is protected. Learn more on [sonosite.com](http://sonosite.com)

## Supported languages

**System user interface languages:** English, French, German, Italian, Spanish, Japanese, Simplified Chinese

## Connectivity and external data management

2 USB 2.0 ports (stand), 2 USB 3.0 Ports (system engine), 1 USB Port for optional printer  
 Ethernet port, 1080p digital video output (compatible with 1080p displays) - stand only  
 Storage capacity alert if free internal storage is less than 10%, study data Auto delete function  
 IPv4 and IPv6 networking (DHCP, SLAAC, and static addressing), automatic time setting by synchronisation with network time server

## Wireless solutions

**2.4 GHz and/or 5 GHz wireless:** 802.11 (A, B, G, N, and AC networking)

**Key management protocols:** WPA/WPA2 personal, WPA/WPA2 enterprise (EAP-TLS, EAP-PEAP) Radius (EAP-TLS, EAP-PEAP)

## DICOM image management

Store, Modality Worklist, Modality Perform Procedure Steps (MPPS), Storage Commitment  
 Basic Text and Comprehensive Structured Reports (SR), Supported SOP Classes: Verification, Ultrasound Image Storage, Ultrasound Multi-frame Image Storage, Secondary Capture Image Storage, Modality Worklist Information Model - FIND, Modality Performed Procedure Step, Storage Commitment Push Model, Basic Text SR, Comprehensive SR, DICOM USB export, Allow saving connectivity configuration via USB for easy replication or restoration, DICOM compliant, DICOM TLS Secure Transport Connection Profile support

## Data security

System meets Federal Information Processing Standards (FIPS) for moderate security control selections per FIPS199, FIPS200, and NIST 800-53 Secure boot  
 User and role based authentication  
 LDAP support

### Security policies:

Open, WEP, Radius, WPA, WPA2  
 Complex password rules support  
 Federal System Use Notification support  
 Guest mode support  
 DICOM TLS Secure Transport Connection Profile support

### Data encryption for data at rest and in transit:

FIPS 140-2 validated encryption algorithms  
 System wide white-listing  
 Hardened operating system and services  
 System firewall  
 MDS2 located on Sonosite.com

## Stand includes

Input/output connections, dual gel holder, wipes holder, storage bin, lockable drawer, stand battery, cord wrap, power cord, small basket sets including dual gel holder and wipe holder, front gel holder, storage bin, power cord management, (or large basket sets including front gel holder, 4 large storage bins), stand battery, power cord

**Casters:** (4) inch swivel, 4 locking wheels



**FUJIFILM Sonosite, Inc.**  
 Worldwide Headquarters  
 21919 30th Drive SE, Bothell, WA 98021-3904  
 Tel: +1 (425) 951 1200 or +1 (877) 657 8050  
 Fax: +1 (425) 951 6800 [sonosite.com](http://sonosite.com)

**FUJIFILM Sonosite BV**  
 European Headquarters  
 Joop Geesinkweg 140, 1114 AB  
 Amsterdam, Netherlands  
 Tel: +31 20 462 0000

## Sonosite Worldwide Offices

FUJIFILM Sonosite Australasia Pty Ltd: Australia . . . . . 1300 663 516  
 FUJIFILM Sonosite Australasia Pty Ltd: New Zealand . . . . . 0800 888 204  
 FUJIFILM Sonosite Canada Inc. . . . . +1 888 554 5502  
 FUJIFILM Sonosite GmbH-Germany. . . . . +49 69 80 88 40 30  
 FUJIFILM Sonosite Iberica SL-Spain. . . . . +34 91 123 84 51  
 FUJIFILM Sonosite India Pvt Ltd. . . . . +91 124 288 1100

FUJIFILM Sonosite Ltd-United Kingdom . . . . . +44 1462 341 151  
 FUJIFILM Sonosite SARL-France . . . . . +33 182 880 702  
 FUJIFILM Asia Pacific Pte. Ltd. . . . . +65 6383 9933  
 FUJIFILM (China) Investment Co., Ltd . . . . . +86 21 5010 6000  
 FUJIFILM Medical Co., Ltd.-Japan . . . . . +81 3 0418 7190  
 FUJIFILM Middle East (FZE) . . . . . +971 4 887 8722

SONOSITE and the SONOSITE logo are registered and unregistered trademarks of FUJIFILM Sonosite, Inc. in various jurisdictions. FUJIFILM is a registered trademark of FUJIFILM Corporation in various jurisdictions. All other trademarks are the property of their respective owners.

Copyright © 2023 FUJIFILM Sonosite, Inc. All rights reserved. Subject to change.

MKT03683\_ANZ Rev C 06/2023