

SIUI

HEADQUARTERS:

Shantou Institute of Ultrasonic Instruments Co., Ltd.
Add: No.77, Jinsha Road, Shantou 515041 Guangdong, China
Tel: 86-754-8825 0150 Fax: 86-754-8825 1499
<http://www.siui.com> E-mail: siui@siui.com

HONG KONG OFFICE:

Shantou Institute of Ultrasonic Instruments (HK) Co., Ltd.
Add: Room 2101, Tung Chiu Commercial Center 193 Lockhart Road, HK
Tel: 852-2891 6722 Fax: 852-2891 6723



All rights reserved to SIUI 2020
EN11201022

Apogee 1000V^{Lite}

Economical Veterinary Color Doppler
for Entry Level



SIUI

Apogee 1000V Lite features a compact design and impressive performance. This affordable color Doppler ultrasound combines great portability, outstanding capabilities and comprehensive applications, applicable for routine exam and intraoperative exam including cardiac, reproductive organ, abdomen, small parts, stomach, intestine, etc.

Extremely portable design maximizes practical value

Lightweight laptop design

delivers portability for always ready to go



Detachable Li-ion battery plus **car charger** guarantee continuous work

15" monitor provides high-resolution view from most vantage points



Splash-proof flat control panel fits diverse environments

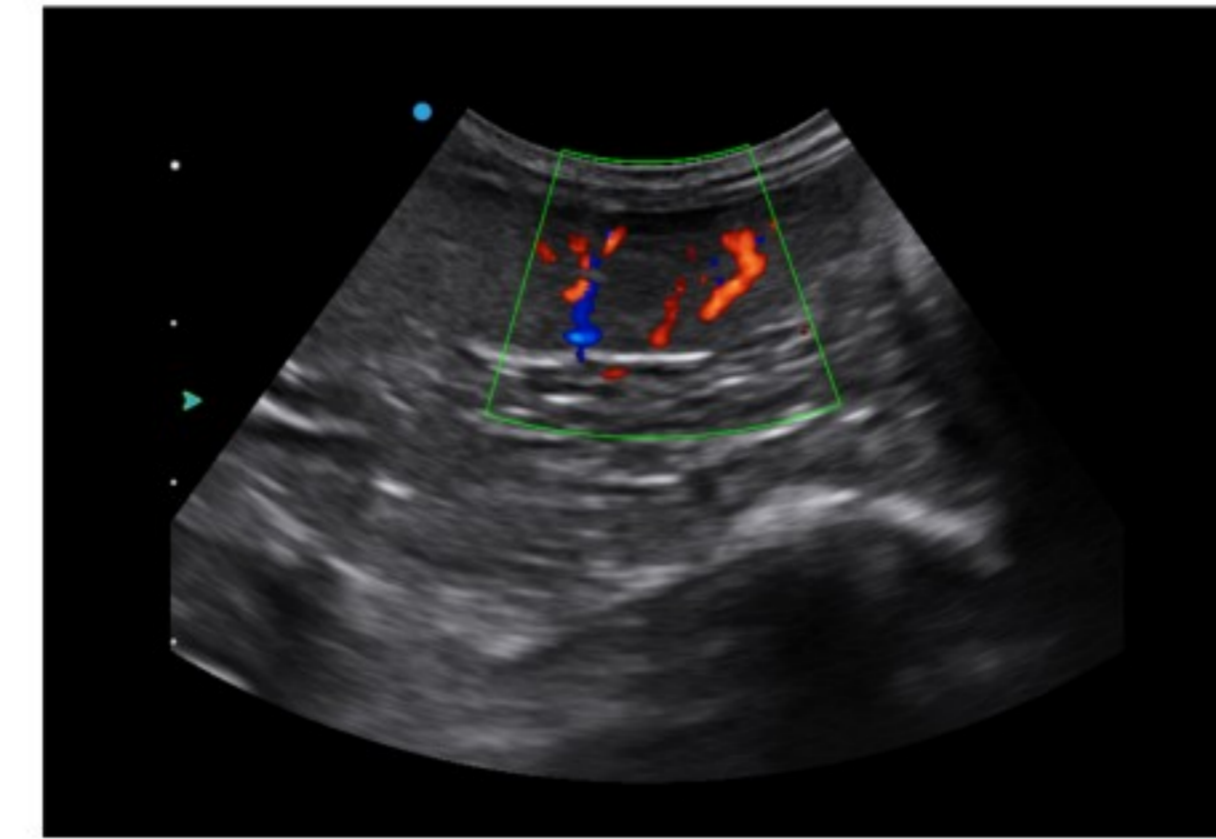
A complete set of function keys increases efficiency

Travelling backpack eases onsite healthcare services

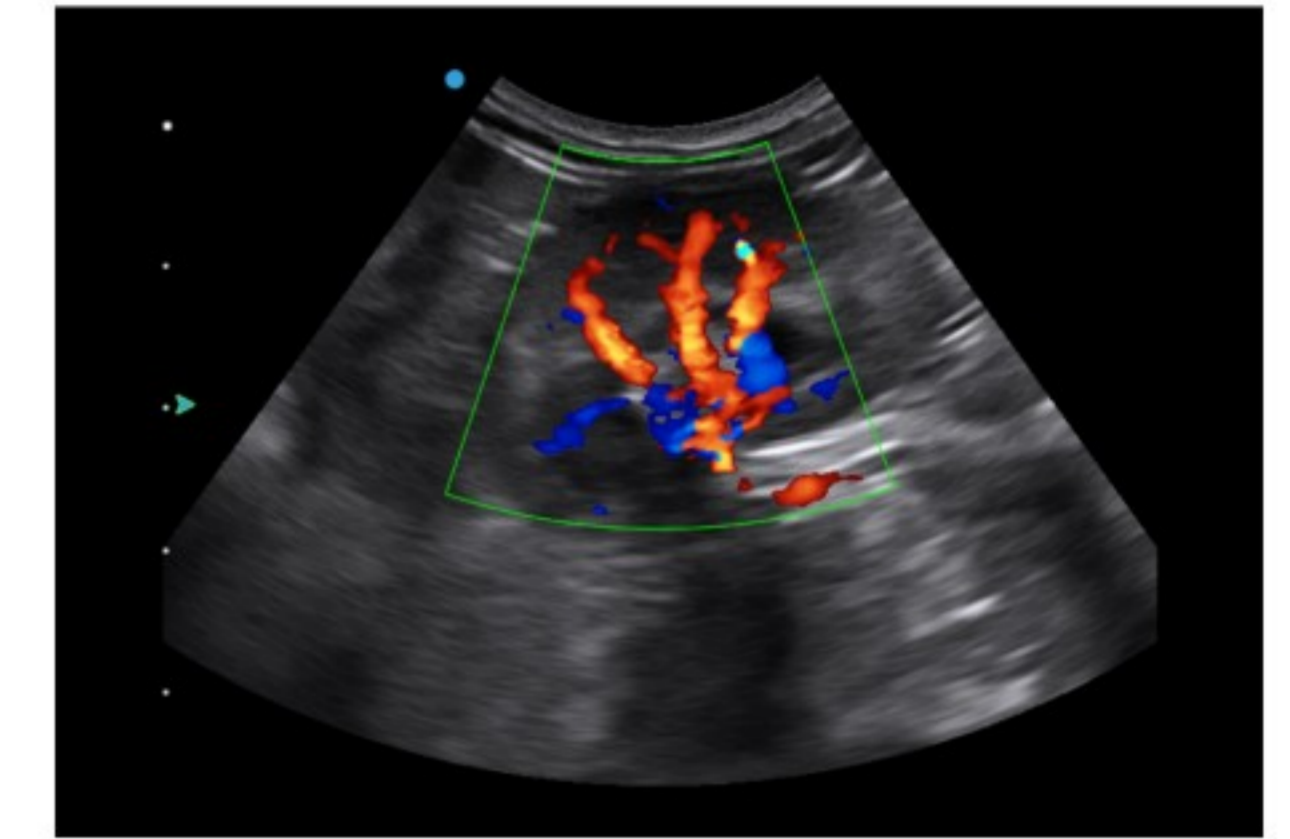


Comprehensive applications come with outstanding capabilities

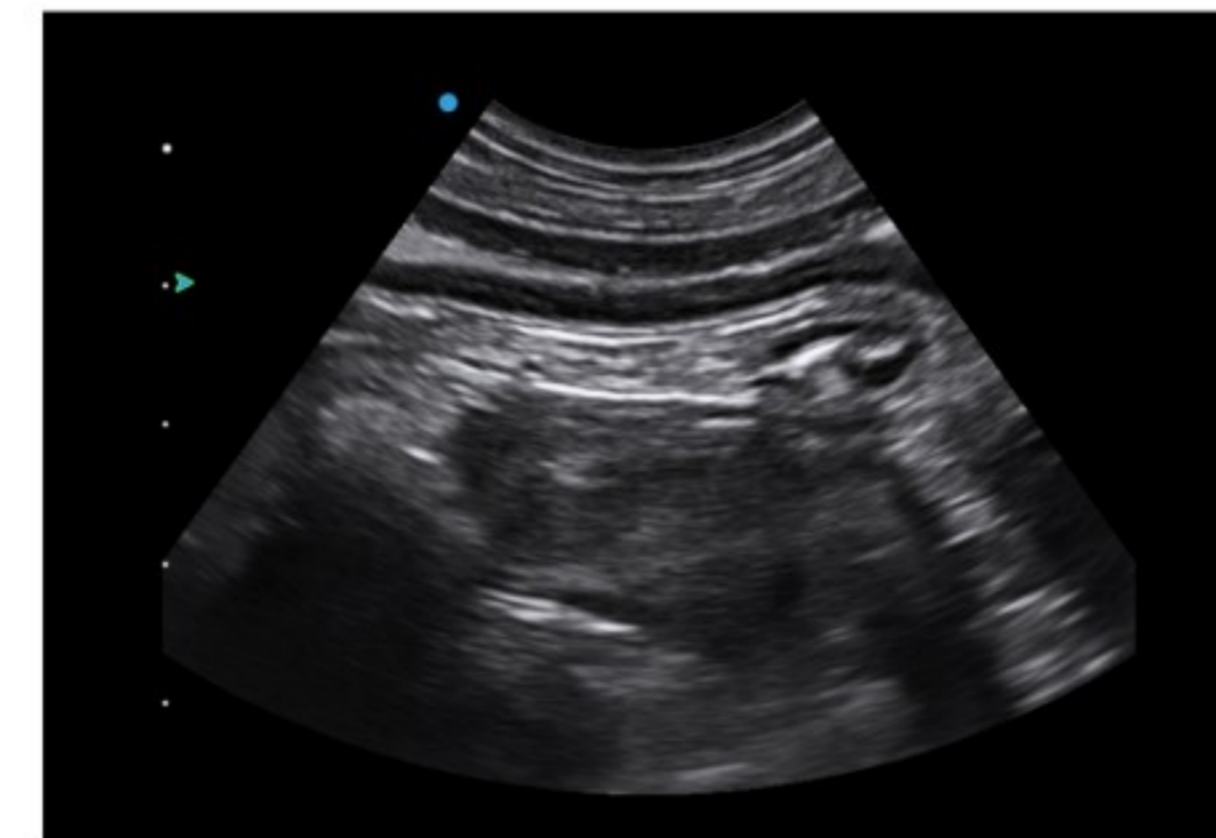
Abdomen



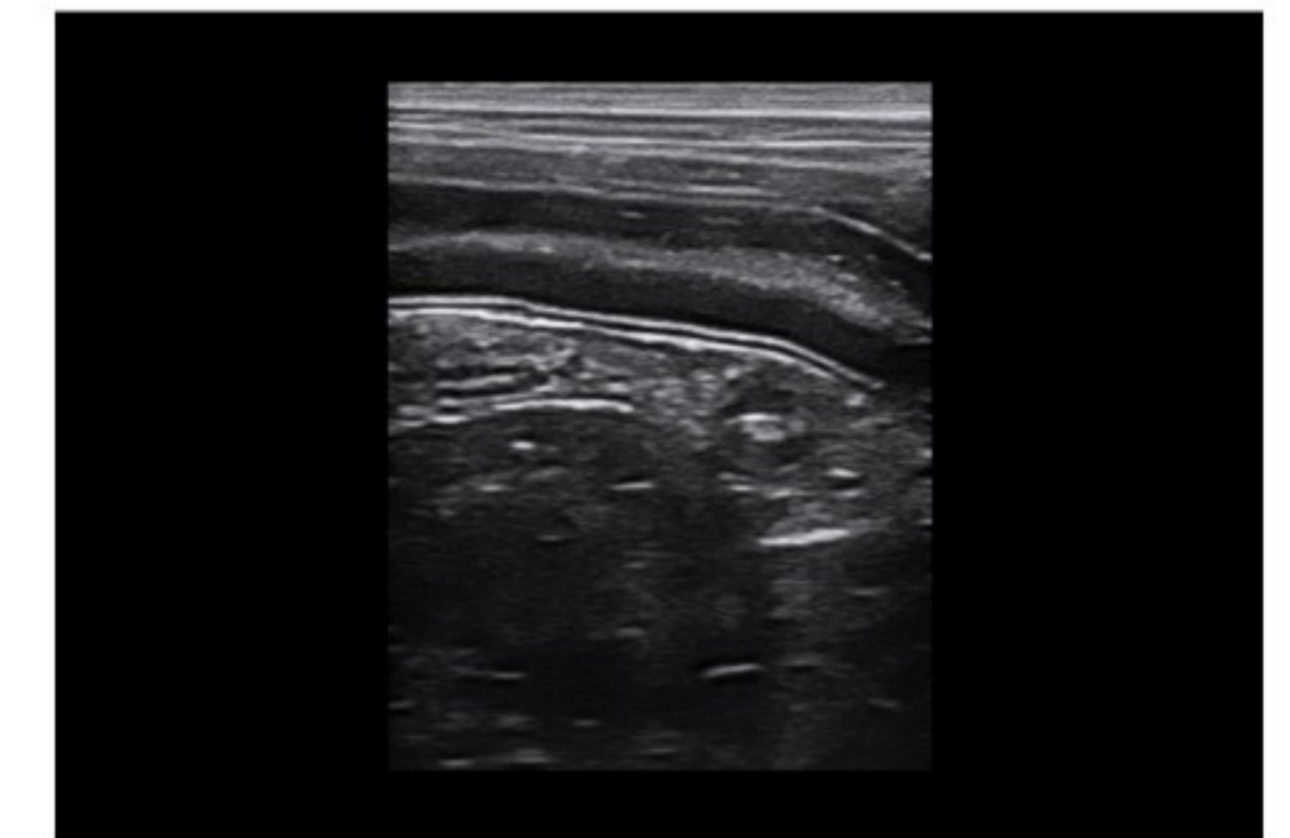
Liver



Kidney

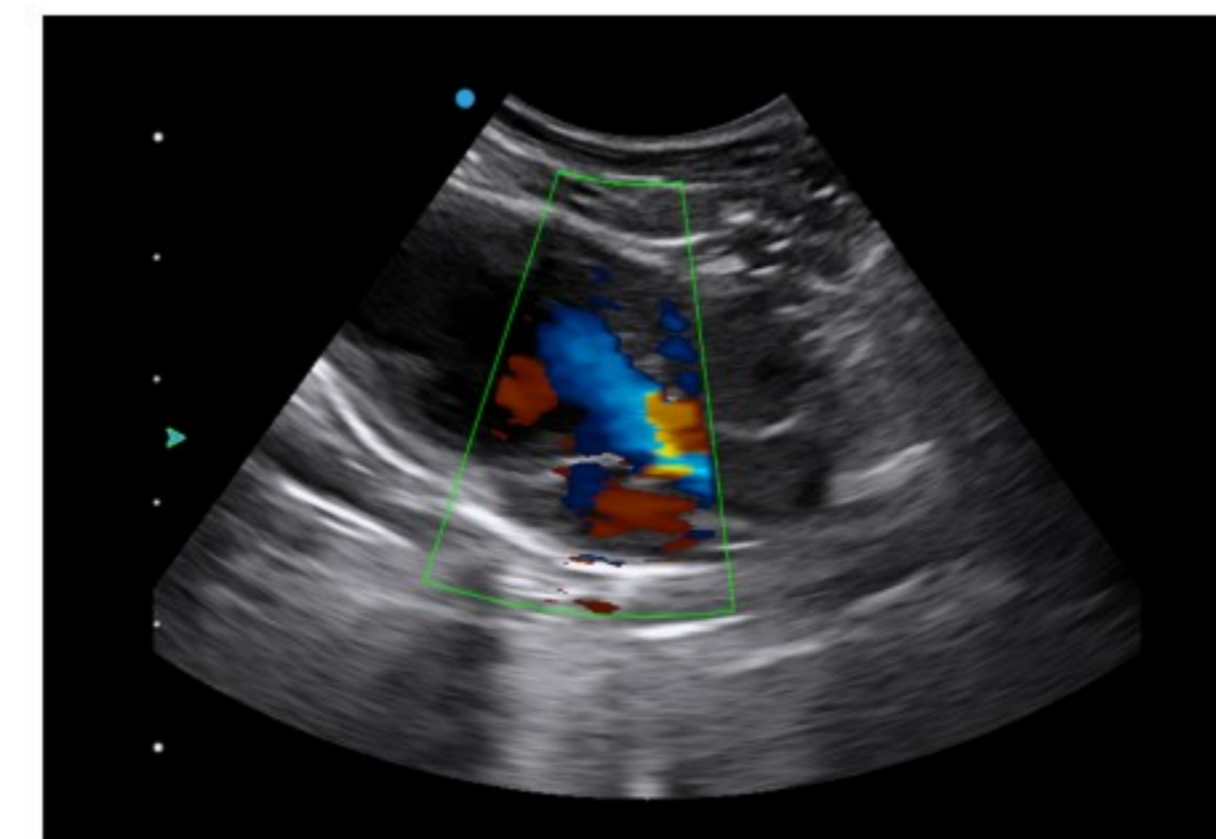


Intestine

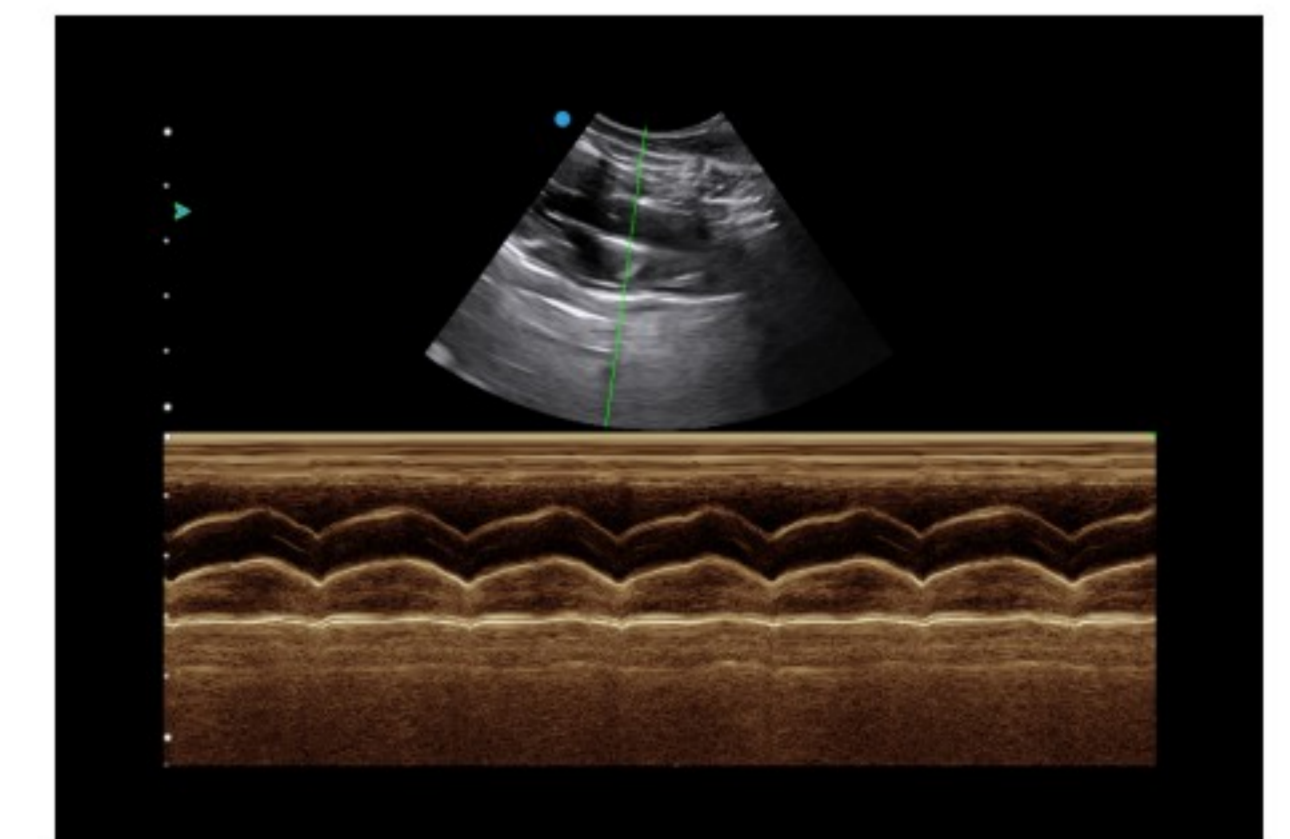


Intestine

Cardiology



C mode



M Mode