

**Kistler Maschinen-
und Anlagenbau GmbH**

Mackstrasse 84

D-88348 Bad Saulgau, Germany

Tel +49 (0) 75 81 4 88 82-0

Fax +49 (0) 75 81 4 88 82-22

info@kistler-machine.de

www.kistler-machine.de



GENERAL DESCRIPTION

On all models, the rotation speed is infinitely variable (see data sheet).

The drivers for turning of the faceplate and tilting as well as the electrical control are located in protective housings.

On all models, the tilting angle is 135° infinitely variabel from the horizontal faceplate to the 45° negative tilted faceplate.

ELECTRICAL CONTROL

On the models R 50, R 100 and R 300, the setting of the forward-stop-reverse rotation as well as the speed of the rotation are set at the front of the machine which is switched on and off by a remote foot switch. As an option, these models come with a remote control (hand pendant, foot control until or control within the welder's shield). With the models R 500 - R 10000, a remote control for forward-stop-reverse, up-stop-down tilt as well as a potentiometer for the rotation speed is included as a standard. The user can choose between a hand-pendant, foot control until or control within the welder's shield.



Modell R 100



Modell R 500

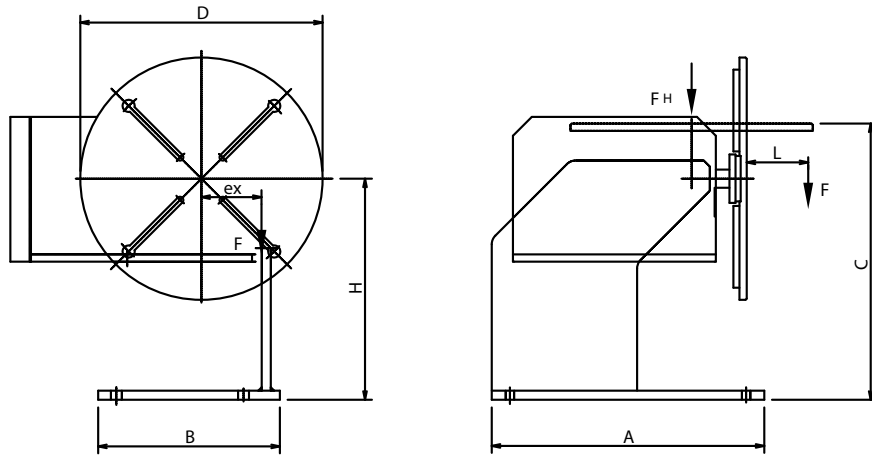


Modell R 300

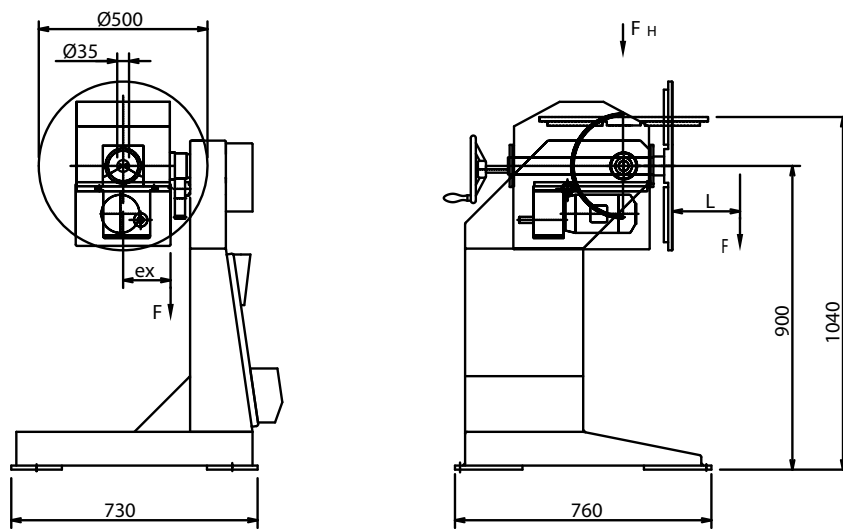
R RANGE

Welding Positioners

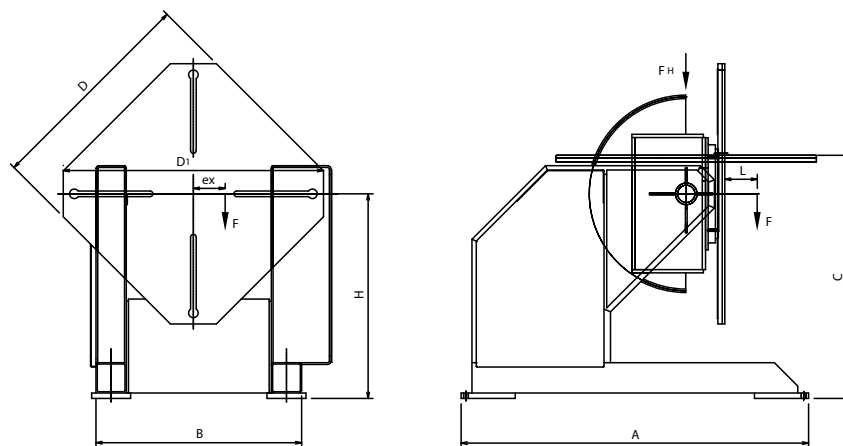
Model R50, R100



Model R300



Model R500 - R10.000



LOAD DIAGRAMM

| | L (mm) | 80 | 200 | 400 | 600 | 800 | 1000 | 1500 | FH(kg) |
|---------|-------------------|------------|--------------|-------------|-------------|-------------|-------------|-------------|--------|
| R 50 | F (kg) ex (mm) | 50 60 | 20 150 | 10 300 | 6,6 450 | 5 600 | 4 750 | | 65 |
| R 100 | F (kg) ex (mm) | 100 60 | 40 150 | 20 300 | 13 450 | 10 600 | 8 750 | | 130 |
| R 300 | F (kg) ex (mm) | 30040 | 300 40 | 150 80 | 100 120 | 75 160 | 60 200 | 40 300 | 400 |
| R 500 | F (kg) ex (mm) | 500 67 | 500 67 | 250 133 | 167 200 | 125 267 | 100 333 | 67 500 | 600 |
| R 750 | F (kg) ex (mm) | 750 67 | 750 67 | 375 133 | 250 200 | 187 267 | 150 333 | 100 500 | 950 |
| R 1500 | F (kg) ex (mm) | 1500 67 | 1500 67 | 750 133 | 500 200 | 375 267 | 300 333 | 200 500 | 1900 |
| R 3000 | F (kg) ex (mm) | 3000 67 | 3000 67 | 1500 133 | 1000 200 | 750 267 | 600 333 | 400 500 | 3800 |
| R 5000 | F (kg) ex (mm) | | 5000 120 | 3750 160 | 2500 240 | 1875 320 | 1500 400 | 1000 600 | 6000 |
| R 7500 | F (kg) ex (mm) | | 7500 120 | 5600 160 | 3750 240 | 2800 320 | 2250 400 | 1500 600 | 9000 |
| R 10000 | F (kg) ex (mm) | | 10000 120 | 7500 160 | 5000 240 | 3750 320 | 3000 400 | 2000 600 | 12000 |

We reserve the right to alter specifications without prior notice

| | A | B | C | D | D1 | H | Rotation speed AMP | Pilot hole (mm) | Max. Welding current (A) | Remarks | Power requirement (Changes possible) |
|---------|------|------|--------------|------|------|------|--------------------|-----------------|--------------------------|-------------------------------------|--------------------------------------|
| R 50 | 350 | 250 | 415 | 300 | - | 335 | 0 bis 6 | - | 400 | Tilted manually: Locked by clamping | 230 V, 1 Ph., 50 Hz |
| R 100 | 450 | 300 | 465 | 400 | - | 365 | 0 bis 6 | - | 400 | Tilted manually: Locked by clamping | 230 V, 1 Ph., 50 Hz |
| R 300 | | | (see sketch) | | | | 0 bis 3 | (see sketch) | 400 | Tilted by worm gear and handwheel | 230 V, 1 Ph., 50 Hz |
| R 500 | 860 | 700 | 930 | 650 | - | 800 | 0 bis 2,5 | 50 | 400 | Motorized tilt | 400 V, 3 Ph. + N, 50 Hz |
| R 750 | 1140 | 770 | 1000 | 700 | 830 | 800 | 0 bis 2 | 60 | 400 | Motorized tilt | 400 V, 3 Ph. + N, 50 Hz |
| R 1500 | 1500 | 1105 | 1145 | 1000 | 1200 | 945 | 0 bis 1,5 | on request | 600 | Motorized tilt | 400 V, 3 Ph. + N, 50 Hz |
| R 3000 | 1700 | 1180 | 1180 | 1100 | 1300 | 1040 | 0 bis 1 | on request | 600 | Motorized tilt | 400 V, 3 Ph. + N, 50 Hz |
| R 5000 | 1900 | 1300 | 1220 | 1200 | 1420 | 1150 | 0 bis 1 | on request | 600 | Motorized tilt | 400 V, 3 Ph. + N, 50 Hz |
| R 7500 | 2400 | 1600 | 1600 | 1250 | 1800 | 1450 | 0 bis 1 | on request | 600 | Motorized tilt | 400 V, 3 Ph. + N, 50 Hz |
| R 10000 | 2650 | 1700 | 1680 | 1300 | 1840 | 1500 | 0 bis 1 | on request | 600 | Motorized tilt | 400 V, 3 Ph. + N, 50 Hz |

We reserve the right to alter specifications without prior notice



**Kistler Maschinen-
und Anlagenbau GmbH**

Mackstrasse 84

D-88348 Bad Saulgau, Germany

Tel +49 (0) 75 81 4 88 82-0

Fax +49 (0) 75 81 4 88 82-22

info@kistler-machine.de

www.kistler-machine.de