

Three-pole switch disconnectors



GA016 A...
GA040 A
GA063 SA



GA063 A...
GA125 A

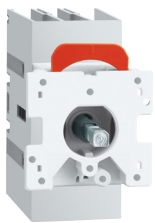
Order code	IEC conventional free air thermal current Ith AC21A (≤690V)	IEC rated operational current Ie AC22A (≤690V) AC23A (≤415V)	Qty per pack	Wt [kg]
	[A]	[A]	n°	[kg]

Direct operating version, complete with black handle.
For door-coupling version, separately purchase the handle and shaft extension; refer to pages 3-5 and 3-7.

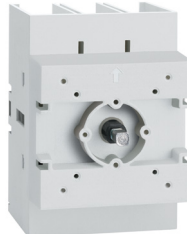
GA016 A	16	16	1	0.146
GA025 A	25	25	1	0.146
GA032 A	32	32	1	0.146
GA040 A	40	40	1	0.146
GA063 SA	63	45	1	0.148
GA063 A	63	63	1	0.388
GA080 A	80	80	1	0.388
GA100 A	100	100	1	0.388
GA125 A	125	125	1	0.388
GA160 A	160	125	1	0.388

Door-mount version, complete with shaft extension (purchase handle separately, see page 3-5).

GA016 C	16	16	1	0.170
GA025 C	25	25	1	0.170
GA032 C	32	32	1	0.170
GA040 C	40	40	1	0.170
GA063 C	63	63	1	0.404
GA080 C	80	80	1	0.404
GA100 C	100	100	1	0.404
GA125 C	125	125	1	0.404



GA016 C...
GA040 C



GA063 C...
GA125 C

Fourth pole add on



GAX42...A
GAX41...A
GAX42 063SA
GAX41 063SA

Order code	IEC conventional free air thermal current Ith AC21A (≤690V)	IEC rated operational current Ie AC22A (≤690V) AC23A (≤415V)	Qty per pack	Wt [kg]
	[A]	[A]	n°	[kg]

Simultaneous closing operation as switch disconnector poles. For GA...A version.

GAX42 040A ^①	40	40	1	0.045
GAX42 063SA ^②	63	45	1	0.045
GAX42 063A	63	63	1	0.126
GAX42 080A	80	80	1	0.126
GAX42 100A	100	100	1	0.126
GAX42 125A	125	125	1	0.126
GAX42 160A	160	125	1	0.126

For GA...C version.

GAX42 040C ^③	40	40	1	0.045
GAX42 063C	63	63	1	0.128
GAX42 080C	80	80	1	0.128
GAX42 100C	100	100	1	0.128
GAX42 125C	125	125	1	0.128

Early-make closing operation with respect to switch disconnector poles. For GA...A version.

GAX41 040A ^④	40	40	1	0.046
GAX41 063SA ^⑤	63	45	1	0.046
GAX41 125A ^⑥	125	125	1	0.116

For GA...C version.

GAX41 040C ^③	40	40	1	0.046
GAX41 125C ^③	125	125	1	0.128

- ① For GA016 A...GA040 A only.
- ② For GA063 SA only.
- ③ For GA016 C...GA040 C only.
- ④ For GA063 A...GA125 A only.
- ⑤ For GA063 C...GA125 C only.



GAX42 040C
GAX41 040C

General characteristics

- 16A to 160A
- Available versions:
 - Direct operating
 - Door mount
 - Door coupling. Use switch disconnector with direct operating handle and separately purchase the handle and shaft extension for this version. See pages 3-5 to 3-7.
- Compact and modular size
- Screw or 35mm DIN rail fixing
- IPadlockable in 0 position with no extra accessory.

Operational characteristics

- Rated insulation voltage Ui: 1000V
- Rated impulse withstand Uimp: 8kV
- Electrical life in AC21A:
 - 100,000 cycles GA016...GA040, GAX...40A/C
 - 15,000 cycles GA063 SA, GAX...063SA
 - 30,000 cycles GA063...GA125, GAX...063...125A/C
 - 1,500 cycles GA160A, GAX42 160A.
- Mechanical life:
 - 100,000 cycles GA016...GA040 A/C, GA063 SA, GAX...40A/C, GAX...063SA
 - 30,000 cycles GA063...GA160A, GAX...063...125A/C, GAX42 160A.

Certifications and compliance

Certifications obtained:

Type	cULus according to UL508 / CSA C22.2 no. 14	cULus according to UL98 / CSA C22.2 no. 4	EAC	KEMA
GA016 A...GA040 A	●	—	●	●
GA063 SA	●	—	●	—
GA016 C...GA040 C	●	—	●	●
GA063 A...GA125 A	—	●	●	—
GA160 A-GAX42 160A	—	—	●	—
GA063 C...GA125 C	—	●	●	—
GAX41 040A-GAX42 040A	●	—	●	—
GAX41 063SA-GAX42 063SA	●	—	●	—
GAX41 040C-GAX42 040C	●	—	●	—
GAX41 125A-GAX42 125C	—	●	●	—
GAX42 063A...GAX42 125A	—	●	●	—
GAX42 063C...GAX42 125C	—	●	●	—

● Certification obtained.

Compliant with standards: IEC/EN 60947-3, IEC/EN 60947-1, UL508, UL98, CSA C22.2.

Strokes of GA poles (main poles and add-on pole)

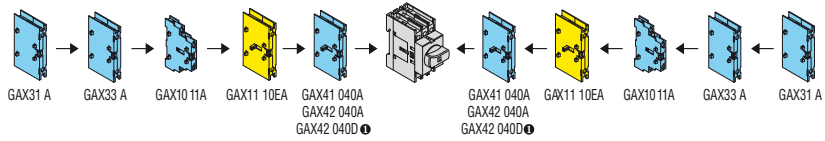
Type	Travel 0→1		
	0°	30°	60°
GA016A/C...GA040A/C - GA063SA			60°
GAX42040A/C - GAX42063SA			60°
Simultaneous closing fourth-pole add on			
GAX41040A/C - GAX41063SA		55°	
Early-make fourth-pole add on			
GA063A/C...GA125A/C, GA160A			55°
Main poles			
GAX42063A/C...GAX42125A/C, GAX42160A			55°
Simultaneous closing fourth-pole add on			
GAX41125A/C		48°	
Early-make fourth-pole add on			

OFF ON

Maximum combination

GA016 A...GA040 A GA040 D

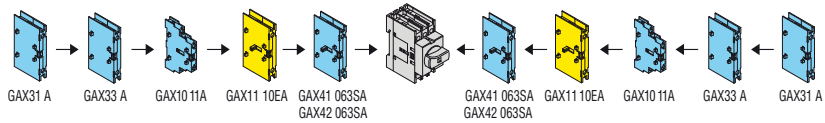
Sequence and maximum combination of add-on blocks on direct operating switch disconnectors



1	1	1	—	1	GA016 A GA025 A GA032 A GA040 A	—	—	2	1	1
1	1	2	—	—		1	—	1	1	1
1	1	1	—	1		—	1	1	1	1
1	1	1	1	—		1	—	1	1	1
1	1	1	1	—		—	—	2	1	1
1	1	2	—	—		—	—	1	1	1
1	1	2	—	—		GA040 D	—	2	1	1
1	1	—	—	—		1	1	—	1	1
1	1	—	—	1		—	—	—	1	1
1	1	—	—	—		—	—	—	1	1

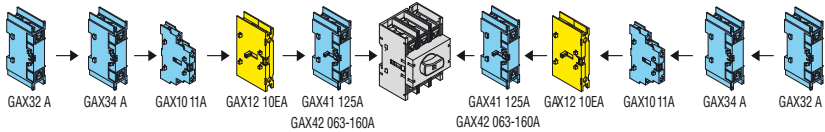
① GAX42 040D can be used with GA040 D switch only.

GA063 SA



1	1	1	—	1	GA063 SA	—	—	2	1	1
1	1	2	—	—		1	—	1	1	1
1	1	1	—	1		—	1	1	1	1
1	1	1	1	—		—	—	1	1	1
1	1	1	1	—		—	—	2	1	1
1	1	2	—	—		—	—	1	1	1
1	1	2	—	—		—	—	2	1	1
1	1	—	—	—		—	—	1	—	1
1	1	—	—	1		—	—	—	1	1
1	1	—	—	—		—	—	—	1	1

GA063 A...GA160A

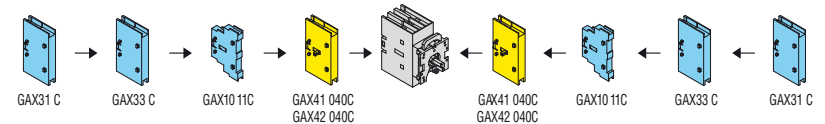


—	—	1	—	1	GA063 A GA080 A GA100 A GA125 A GA160 A*	—	—	2	—	—
—	—	2	—	—		1	—	1	—	—
—	—	1	—	1		—	1	1	—	—
—	—	1	1	—		—	1	—	—	—
—	—	1	1	—		—	—	2	—	—
—	—	2	—	—		—	—	1	1	—
—	—	2	—	—		—	—	2	—	—
1	1	—	—	—		—	1	—	—	—
1	1	—	—	1		—	—	—	1	1
1	1	—	—	—		—	—	—	1	1

* GA160 A can be fitted with 1 single 4th pole (GAX42160 A) on one side and an auxiliary contact on the other.

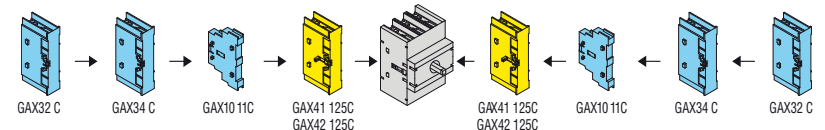
GA016 C...GA040 C

Sequence and maximum combination of add-on blocks on door mount switch disconnectors



1	1	1	—	1	GA016 C GA025 C GA032 C GA040 C	—	1	1	1	1
1	1	1	1	—		1	1	1	1	1
1	1	—	—	1		—	1	1	1	1
1	1	1	1	—		—	1	—	1	1
1	1	1	1	—		—	—	1	1	1
1	1	—	—	—		—	—	—	1	1

GA063 C...GA125 C



—	—	1	—	1	GA063 C GA080 C GA100 C GA125 C	—	1	—	—	—
—	—	1	—	—		1	1	—	—	—
1	1	—	—	1		—	—	1	—	—
—	—	1	—	—		—	1	—	1	1
—	—	1	—	—		—	—	1	—	—
1	1	—	—	—		—	—	—	1	1

SWITCH DISCONNECTORS & CAM SWITCHES

GA series 16A to 160A switch disconnectors

Add-on blocks and accessories



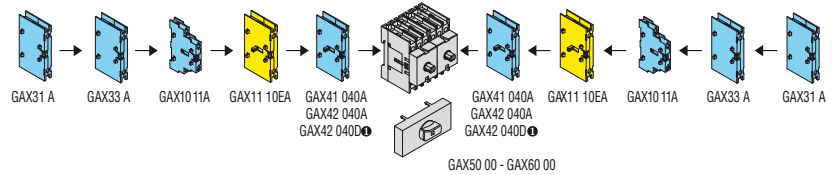
GA016 A...GA040 A

GA040 D

+ GAX50 00 -

GAX60 00

Sequence and maximum combination for mechanical coupling and mechanical interlock for line changeover



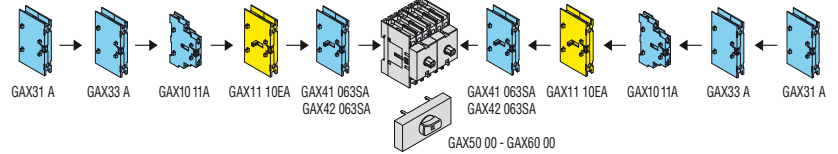
1	1	1	—	1	GA016 A + GA016 A GA025 A + GA025 A GA032 A + GA032 A GA040 A + GA040 A GA040 D + GA040 D ①	1	—	1	1	1
1	1	1	—	1		—	—	2	1	1
1	1	2	—	—		1	—	1	1	1
1	1	1	—	1		—	1	1	1	1
1	1	1	1	—		1	—	1	1	1
1	1	1	1	—		—	—	2	1	1
1	1	2	—	—		—	—	1	1	1
1	1	2	—	—		—	—	2	1	1
1	1	—	—	1		—	1	—	1	1
1	1	—	—	—		—	—	—	1	1

① GAX42 040D can be used with GA040 D switch only.

GA063 SA

+ GAX50 00 -

GAX60 00

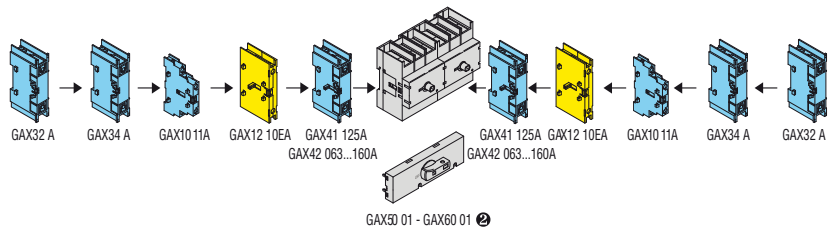


1	1	1	—	1	GA063SA + GA063SA	1	—	1	1	1
1	1	1	—	1		—	—	2	1	1
1	1	2	—	—		1	—	1	1	1
1	1	1	—	1		—	1	1	1	1
1	1	1	1	—		—	—	2	1	1
1	1	2	—	—		—	1	1	1	1
1	1	2	—	—		—	—	2	1	1
1	1	—	—	1		—	1	—	1	1
1	1	—	—	—		—	—	—	1	1

GA063 A...GA160A

+ GAX50 01 -

GAX60 01



—	—	1	—	1	GA063 A + GA063 A GA080 A + GA080 A GA100 A + GA100 A GA125 A + GA125 A GA160 A + GA160 A ①	1	—	1	—	—	
—	—	1	—	1		—	—	2	—	—	—
—	—	2	—	—		1	—	1	—	—	—
—	—	1	—	1		—	—	1	—	—	—
—	—	1	1	—		—	—	—	2	—	—
—	—	2	—	—		—	—	1	1	—	—
—	—	2	—	—		—	—	—	2	—	—
1	1	—	—	1		—	1	—	—	1	1
1	1	—	—	—		—	—	—	—	1	1

① GA160A can be fitted with a single auxiliary contact (GAX1011A) per side.

② Cannot be used with GA160A

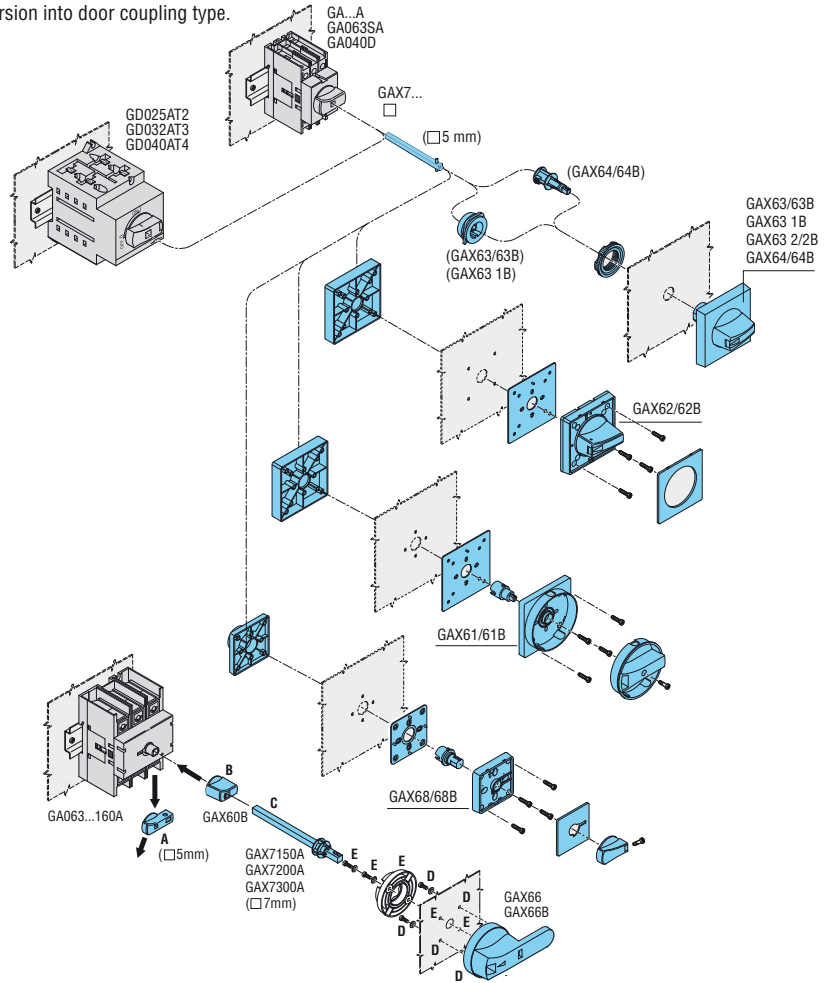
SWITCH DISCONNECTORS & CAM SWITCHES

GA series 16A to 125A switch disconnectors

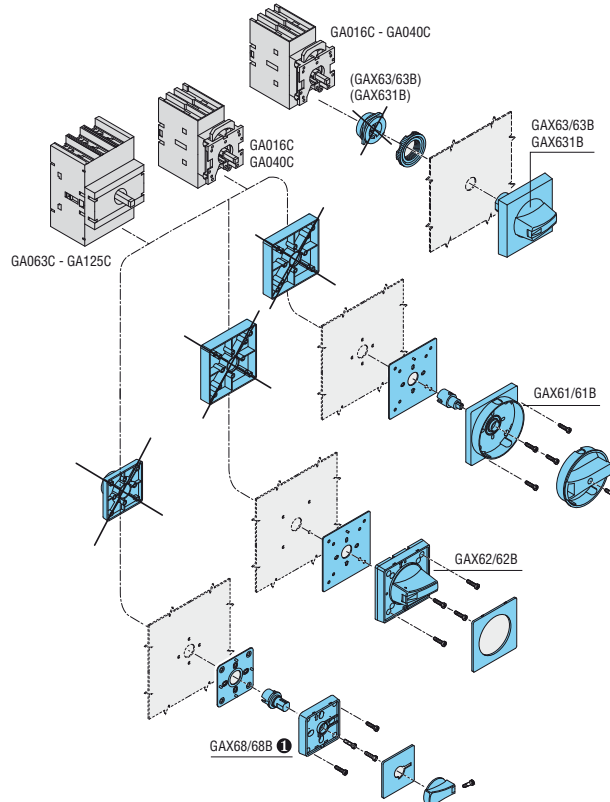
Accessories



Transformation of direct operating version into door coupling type.



Door-mount version



1 Only for GA016C...GA040C