

FR 18E2-U

LOVOL

ALFA SERIES



The LOVOL 1.8 tonne ALFA series excavator features a Yanmar Engine with mechanical fuel pump, so no ECU, eliminating problematic electrical items. Nabtesco hydraulic system with pilot oil operated joysticks for precision and control.

With the toughest heavy duty construction; the LOVOL FR18E2-U ALFA series is designed and developed for the harsh Australian conditions in GREEN AND GOLD.

Features

- Yanmar engine
- Mechanical fuel pump
- No engine ECU
- Half, Quick, and Tilting hitch
- Bulldozer blade
- Pilot oil operated joysticks

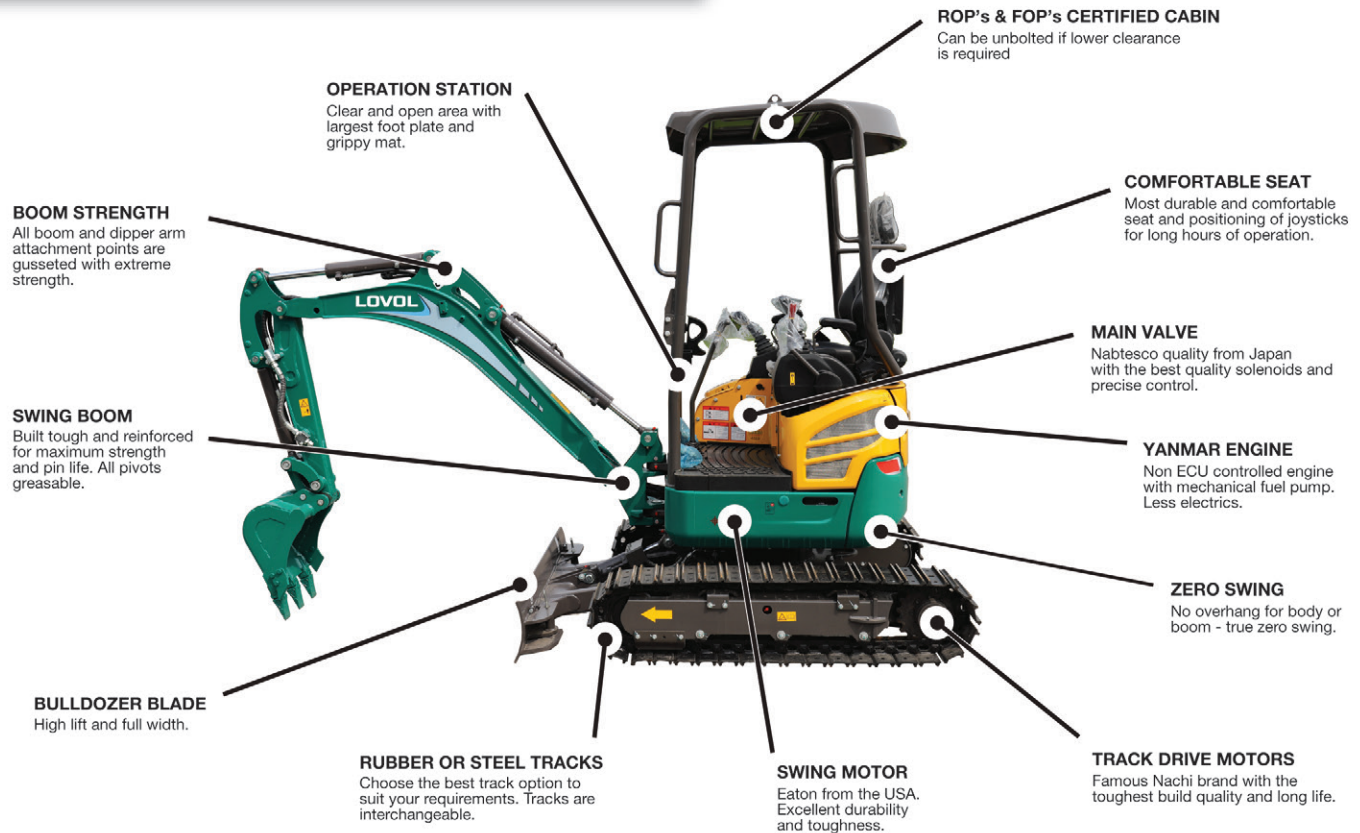
- No machine computer
- Expandable tracks
- Nabtesco hydraulic system

Options

- Steel tracks
- 2 way hammer piping



FR 18E2-U



FR18E2-U Specifications			Dimensions	
Item	Units	Value		
Operational Weight	kg	1810		
Engine Brand	3 Cylinder	Yanmar		
Engine Power/speed	kw/rpm	11.5/2400		
Standard bucket cap	m ²	0.04		
Bucket digging force	kN	15.2		
Dipper arm force	kN	8.5		
Max. digging radius	mm	3905		
Max digging depth	mm	2310		
Max unloading Height	mm	2440		
Max. digging height	mm	3540		
Machine width in/out	mm	990/1280		
Machine height	mm	2347		
Travel speed (f/s)	km/h	3.7/1.9		
Swing speed	rpm	9.0		

Genuine Manufacturers Warranty Included. Specifications may change without notice. Photos are an indication only.



1300 Equip U (378 478)
www.equipmentspecialists.com.au